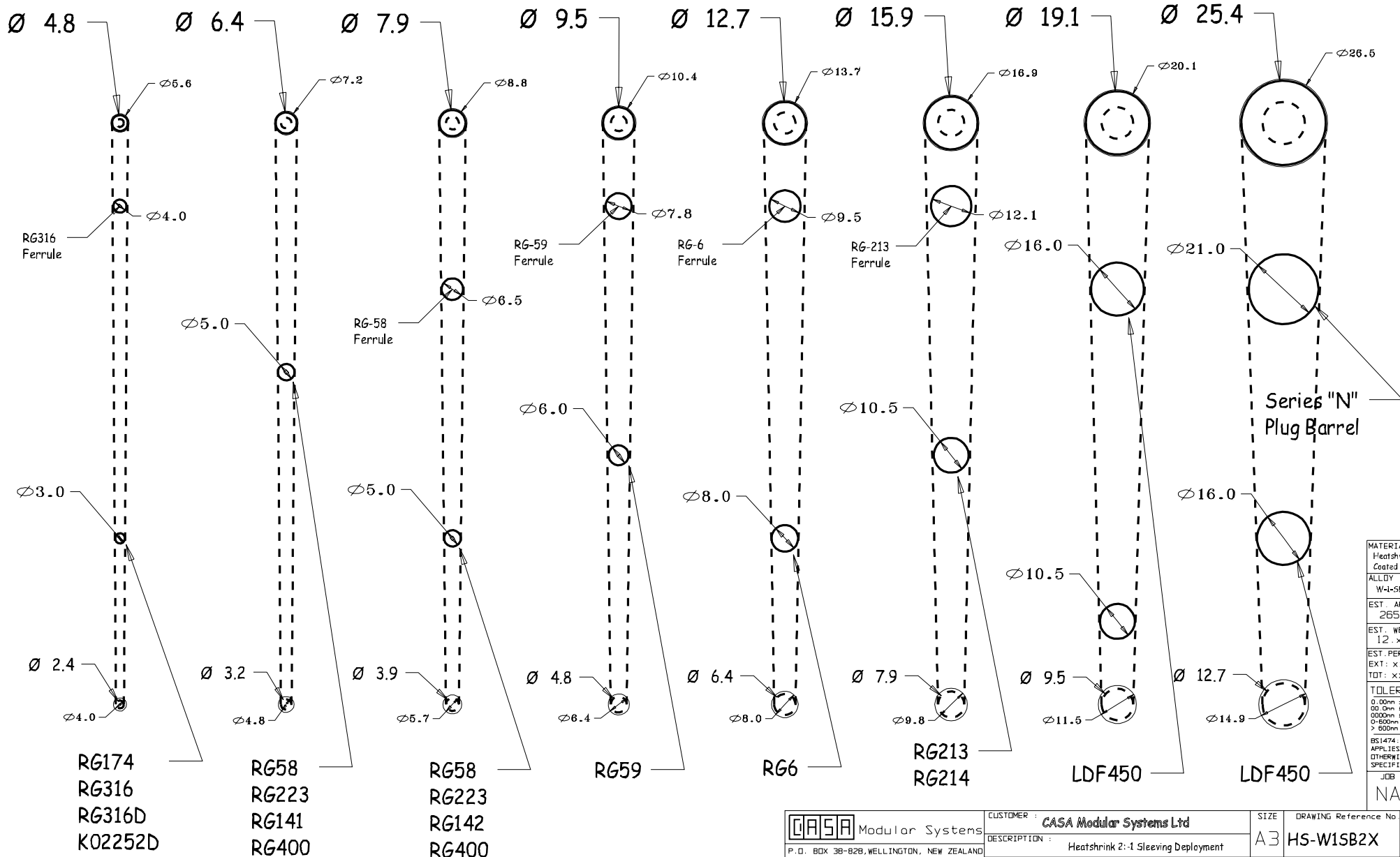


Deployment Guide-Chart for 2:1 Thin-Dual-Wall (adhesive-coated)
Heatshrink Sleeveings in preferred sizes 3/16" (4.8mm) to 1" (25.4mm) ID



MATERIAL	Heatshrink Coated MW
ALLOY	W4-SB2X
EST. AREA	265 mm
EST. WEIGHT	12 x kg
EST. PERIPHERY	EXT: xx mm
TOT:	xx mm
TOLERANCE	0.00mm ±0.1mm
	0.01mm ±0.25mm
	0.02mm ±0.5mm
	0.500mm ±0.1mm
	> 600mm ±0.5mm
BS:1474:1987	APPLIES UNLESS OTHERWISE SPECIFIED
JOB No.	NA

	CUSTOMER :	CASA Modular Systems Ltd	SIZE	DRAWING Reference No.	ISSUE
	DESCRIPTION :	Heatshrink 2:1 Sleeveing Deployment	A3	HS-W1SB2X	A
P.O. BOX 38-928, WELLINGTON, NEW ZEALAND TELEPHONE : (64-4) 5687 277 FACSIMILE : (64-4) 5685 161		DRAWN : A.W.D. DATE : 18/10/09	APPROVED : DWG. SCALE : 1:1	© COPYRIGHT : CASA Modular Systems 1996 ALL RIGHTS RESERVED	