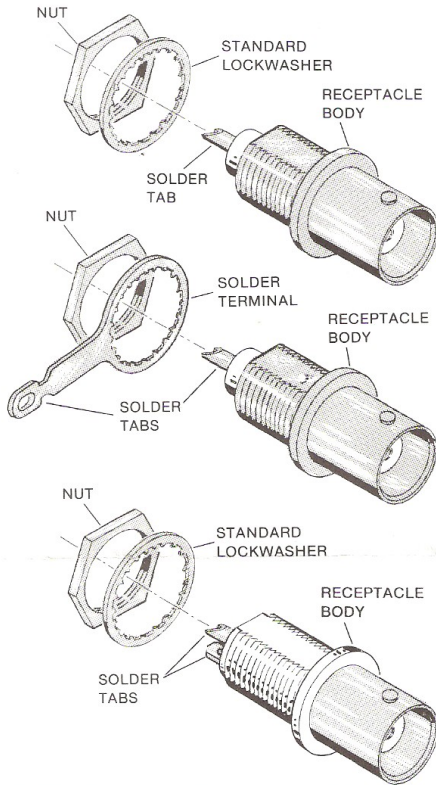


**AMP**AMP INCORPORATED  
Harrisburg, Pa. 17105SERIES BNC SOLDER  
RECEPTACLE JACKS

IS 2858

RELEASED 5-21-79

REVISED 6-5-80



ASSEMBLIES	PART NO.	CENTER CONTACT PL.	DIELECTRIC
STANDARD RECEPTACLE WITH STANDARD LOCKWASHER AND NUT	227169-1	TIN	POLYESTER
	227169-2	TIN	TEFLON†
	227169-3	GOLD	POLYESTER
	227169-4	GOLD	TEFLON
	227169-9	SILVER	POLYESTER
	1-227169-0	SILVER	TEFLON
STANDARD RECEPTACLE WITH LOCKWASHER TERMINAL AND NUT	227169-5	TIN	POLYESTER
	227169-6	TIN	TEFLON
	227169-7	GOLD	POLYESTER
	227169-8	GOLD	TEFLON
	1-227169-1	SILVER	TEFLON
	1-227169-2	SILVER	POLYESTER
INSULATED RECEPTACLE WITH STANDARD LOCKWASHER AND NUT	227726-1	TIN	POLYESTER
	227726-2	SILVER	
	227726-3	GOLD	
SEALED RECEPTACLE	227426-1	GOLD	POLYPROPYLENE EPOXY

Figure 1

AMP<sup>★</sup> Standard and Insulated Series BNC solder receptacle jacks are used in panel mount applications. They are available with the combinations of dielectric material and center contact platings shown in Figure 1.

The assemblies containing a solder tab on the lockwasher are used with coaxial cables. For installations requiring ground isolation, the use of the Insulated Receptacle is recommended. Ground isolation can also be obtained with the Standard Receptacles by use of the insulating bushings, shown in Figure 3.

Sealed BNC solder receptacle jacks are installed as described in paragraph 2 and Figure 4.

## 1. SOLDER RECEPTACLE JACKS LISTED IN FIGURE 1.

### 1.1 INSTALLATION PROCEDURE

(a) First determine mounting requirements; panel cut out dimensions are shown in Figure 2.

- (b) Insert threaded portion of jack through cut-out.  
 (c) Slip on lockwasher; thread on and tighten nut.  
 (d) Solder wire to tab as required.  
 (e) Terminate tab:

1. On solder terminal (lockwasher) where this style assembly is used.
2. On insulated receptacle when this style assembly is used.

### 1.2 INSTALLATION PROCEDURE USING PANEL INSULATING BUSHINGS

- (a) For installation requiring insulating bushings, use panel cut-out shown in Figure 3.  
 (b) Assemble one bushing on each side of panel.  
 (c) Insert threaded portion of jack through bushings.  
 (d) Slip on solder terminal (lockwasher); thread on and tighten nut.  
 (e) Solder wire to tab.  
 (f) Terminate tab on solder terminal as required.

Copyright 1979-1980 by AMP Incorporated, Harrisburg, Pa. All International Rights Reserved. AMP Incorporated products covered by U.S. and Foreign Patents and/or Patents Pending.

† TRADEMARK OF E. I. DUPONT

★ Trademark of AMP Incorporated

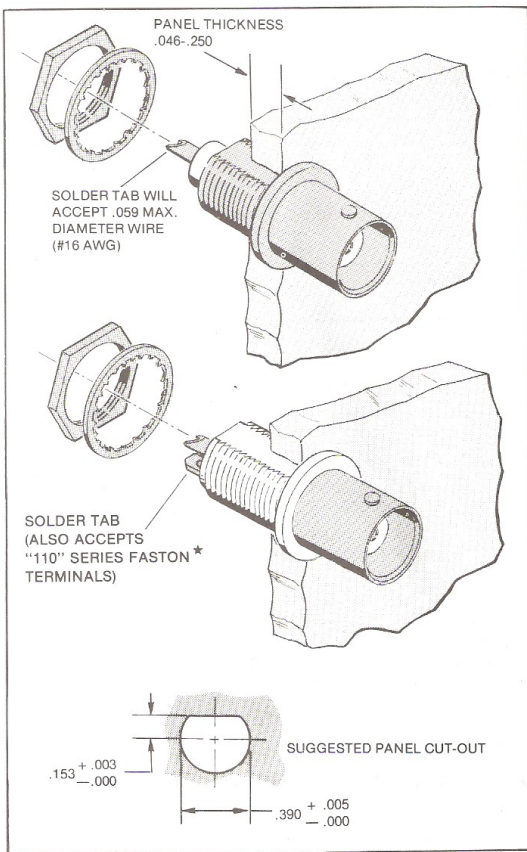


Figure 2

## 2. INSTALLATION PROCEDURE — SEALED BNC SOLDER RECEPTACLE JACKS

(a) First determine mounting requirements; panel cutout dimensions are shown in Figure 4.

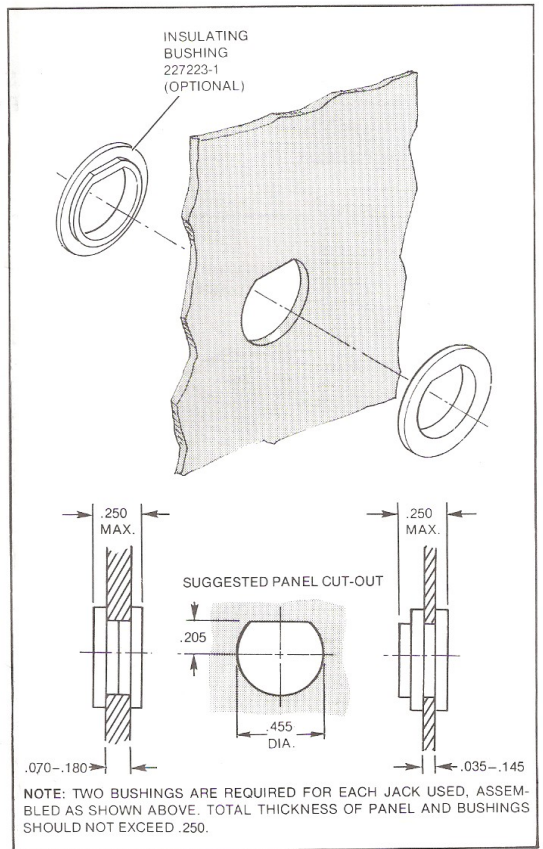


Figure 3

- (b) Assemble gasket to receptacle flange.
- (c) Insert threaded portion of jack through cut-out.
- (d) Slip on lockwasher; thread on and tighten nut.
- (e) Solder wire to center contact solder cup as required.
- (f) Terminate solder tab as required.

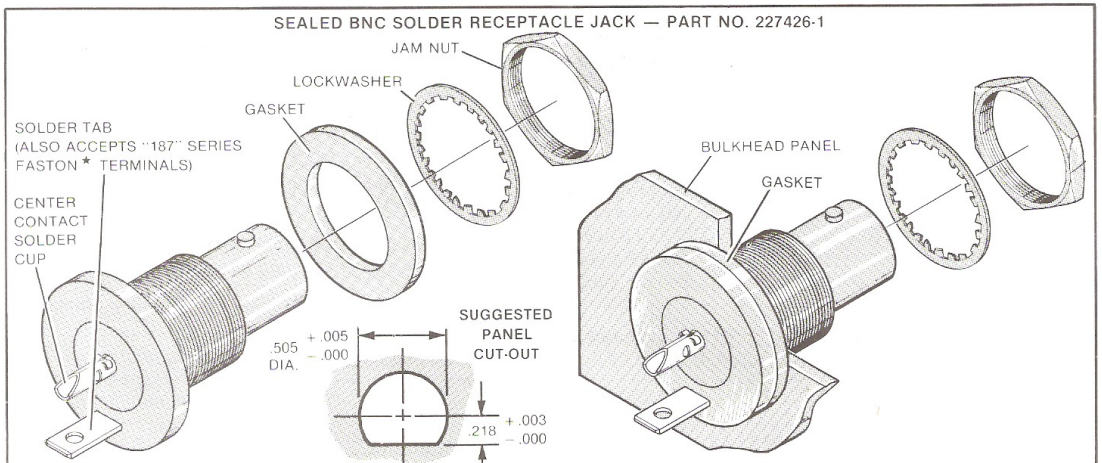


Figure 4