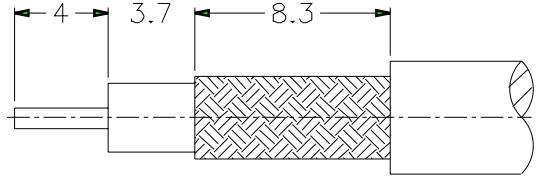
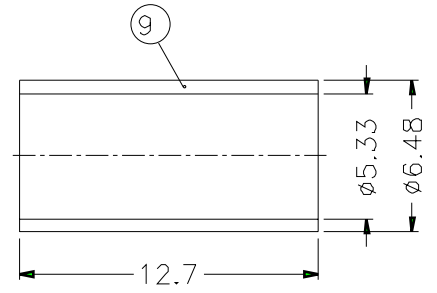
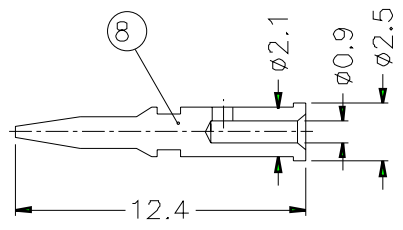
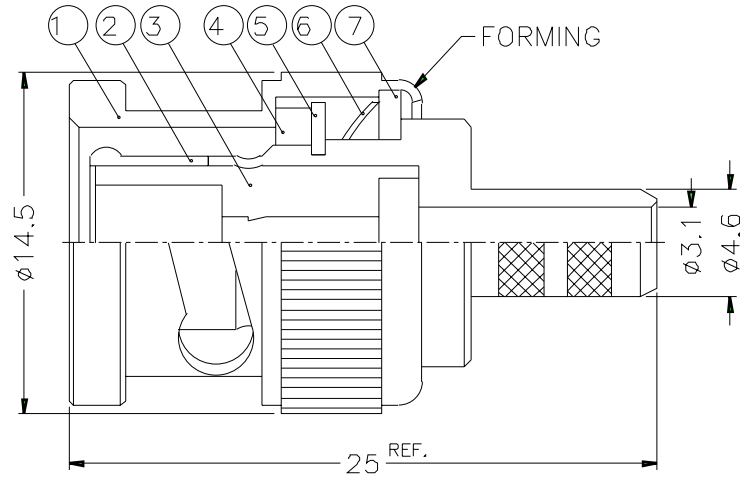


1 2 3 4 5 6 7 8

REVISIONS		
ISS	ZONE	DESCRIPTION\APPROVED\DATE



RECOMMENDED
CABLE STRIPPING DIM'S



NOTES; FINISH (PLATING THICKNESS IN MICRO-INCHES)
 1. BRASS PER QQ-B-626
 2. BRASS PER QQ-B-613
 3. NICKEL PL. 100 MIN. THICK OVER COPPER STRIKE
 4. NICKEL PL. 200 MIN. THICK OVER COPPER STRIKE
 5. GOLD PL. 3 MIN. THICK OVER NICKEL PL. 100 MIN. THICK OVER COPPER STRIKE

1. CRIMPED FERRULE
HEX CRIMP SIZE .213"
 2. CRIMPED CONTACT PIN
HEX CRIMP SIZE .068"

9	FERRULE	COPPER	NOTE 3	1	FR-648/533X 127C	DIMENSIONS ARE IN MILLIMETERS UNLESS OTHERWISE SPECIFIED TOLERANCES 0.5-6 = ±0.2 6-30 = ±0.4 30-120 = ±0.6 120-315 = ±1 315-1000 = ±1.6 1000-2000 = ±2.4	PART NO.		TITLE BNC CRIMP PLUG DRAWING NO. KJ-B1121A1-ND3G-58U-50 FILE NO. F:\DWG\B\1121A1\58U-50\ND3G
8	CONTACT PIN	NOTE 1	NOTE 5	1	B50000-8-25/09		APPROVED	DATE	
7	WASHER	NOTE 2	NOTE 3	1	WS-128/9X08		CHECKED	DATE	
6	SPRING	SK5	NOTE 4	1	B50000-6		DRAWN	DATE	
5	RETAINER RING	NOTE 1	NOTE 3	1	B50000-5			DATE	
4	GASKET	RUBBER	RED	1	GS-115/8X15		08-14-98'		
3	INSULATOR	DELTRIN	NATURAL	1	B50000-3-50-A		08-14-98'		
2	BODY	NOTE 1	NOTE 3	1	B50000-2-46/31		08-14-98'		
1	SHELL	NOTE 1	NOTE 3	1	B50000-1-B		08-14-98'		
NO.	DESCRIPTION	MATERIAL	FINISH	Q'TY	DRAWING NO.	SCALE	3/1	ISSUE	A

1 2 3 4 5 6 7 8