

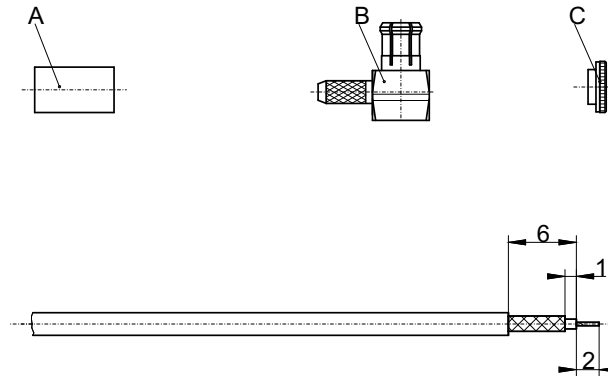
Assembly instructions: 29 C

Series: MCX

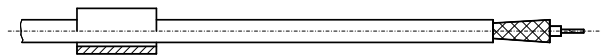
**Angel plug for
semi-rigid cable**

Cable entry:

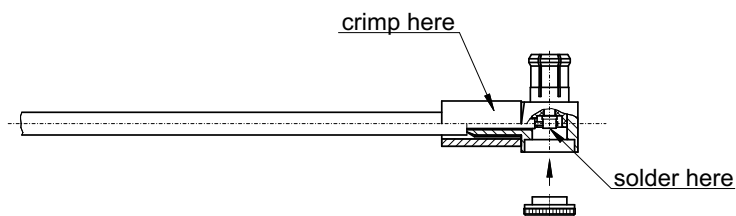
**Center contact - soldered
Braid - crimp**



1. Prepare the cable according to the diagram.



2. Slide ferrule "A" onto the cable.
3. Splay out the braid.



4. Insert the prepared cable into the connector body "B". Position the inner conductor of the cable in the slot of the center pin. Ensure that the braid covers the knurled connector end.
5. Slide ferrule "A" over the braid up to the connector body and crimp as close to the connector body as possible. *)
6. Solder the center pin to the inner conductor of the cable.
7. Press cover "C" into the rear aperture of the connector body.

*) For the crimping die part-no. please consult the relevant customer drawing.

für diese technische Unterlage bezahlen wir uns alle Rechte vor (DIN 34)

				Rosenberger Hochfrequenztechnik 84526 Tittmoning			
				Bearb.	27.02.96	Krautenb.Sa.	M 2:1
a	CAD-MTP	27.02.96	Kra.Sa.	Gepr.			Blatt 1/1
Zust.	Änderung	Datum	Name				

Tools:
Strippingtool
Crimp tool 11 W 150-000
Soldering equipment