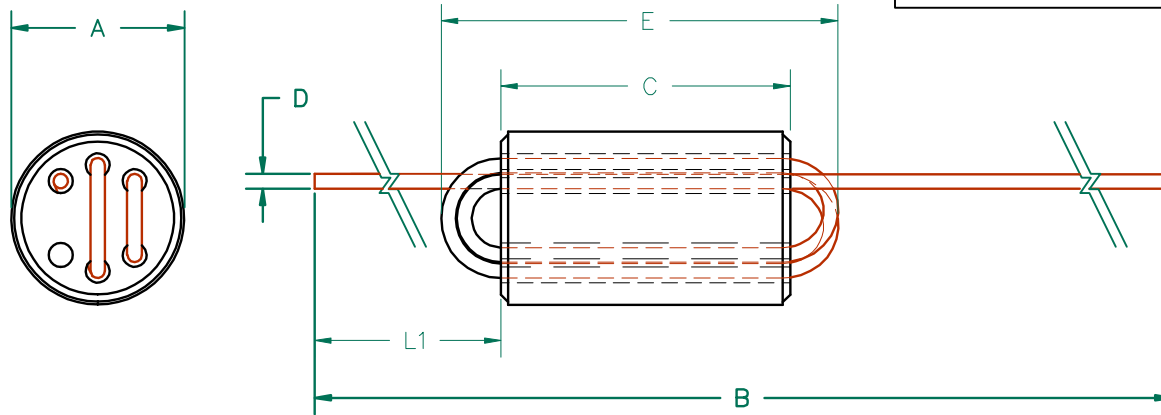


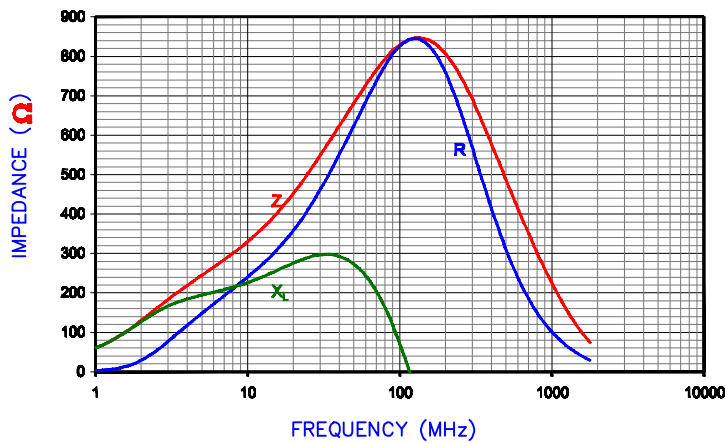
SCALE DRAWING: 1:1



ELECTRICAL TESTING

TEST:	<u>Z</u>	<u>Z</u>
FREQUENCY	<u>25 MHz</u>	<u>100 MHz</u>
NOMINAL	<u>538 Ω</u>	<u>835 Ω</u>
MINIMUM	<u>- Ω</u>	<u>626 Ω</u>

Z, R, X vs Frequency



UNCONTROLLED DOCUMENT

NOTES: UNLESS OTHERWISE SPECIFIED

1. WIRE: 2-1/2 TURNS, 24 AWG 0.51 [.020] DIA,
2. PLATING: 100% TIN 5μ ± 2μ [200 μin ± 80μin]
3. REF. STEWARD CORE P/N 28C0236-000.
4. SOLDERABILITY:
 - A. LEADS SOLDERABILITY CONFORMS TO MIL-STD-202F, METHOD 208F.
5. WEIGHT/1000 1.22 kgs. 2.7 lbs.

AGILENT E4991A RF Impedance/Material Analyzer
HP 16194A Test Fixture

DIMENSIONS:

A	<u>5.99 [.236]</u>	<u>+</u>	<u>0.13 [.005]</u>
B	<u>86.46 [3.404]</u>	<u>+</u>	<u>6.35 [.250]</u>
C	<u>10.00 [.394]</u>	<u>+</u>	<u>0.25 [.010]</u>
D	<u>0.51 [.020]</u>	<u>+</u>	<u>TYP.</u>
E	<u>14.61 [.575]</u>	<u>+</u>	<u>MAX.</u>
L1	<u>38.10 [1.50]</u>	<u>+</u>	<u>3.18 [.125]</u>

DIMENSIONS ARE IN mm [INCHES]				THIS DOCUMENT CONTAINS INFORMATION WHICH IS PROPRIETARY AND CONFIDENTIAL TO STEWARD. NO PRODUCTION OR PUBLICATION OF THIS DOCUMENT IN WHOLE OR IN PART SHALL BE MADE WITHOUT WRITTEN AUTHORIZATION FROM STEWARD.			
K	CORRECT REV BLOCK mm [INCHES]	10/20/06	JRK	<h1 style="color: red;">Steward</h1>			
J	CORRECT NOTE 5	07/07/05	JRK				
H	ADD RIGHT HAND VIEW OF PART UPDATE CENTER VIEW	12/09/03	JRK				
G	CORRECT END VIEW OF PART	12/09/03	JRK				
F	CHANGE P/N TO -10 REVISE NOTES 2&5	10/07/03	JRK				
E	ADD Z,R, XI CURVE UPDATE NOTES	05/15/02	JRK				
D	UPDATE PRINT FORMAT,CHG NOTE #1	12/15/00	JRK				
C	UPDATE PRINT FORMAT	02/17/98	DTR				
B	UPDATED P/N FOR NEW CATALOG	11/21/95	JBE				
REV	DESCRIPTION	DATE	INT				
				28C0236-0BW-10	K	DJB	
				DATE: 08/06/90	SCALE: 4:1	MATERIAL:	
				CAD #	TOOL #	STEWARD 28	
				28C0236-0BW-10-K	C0236		