

Waveguide Adapters

SMA • 7mm Types

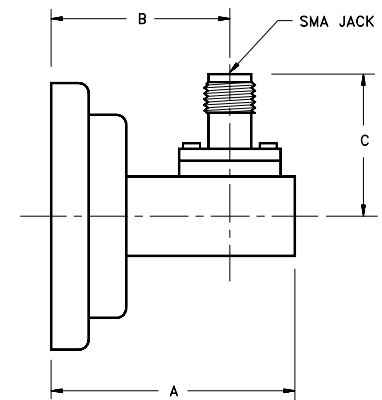
SMA and 3.5mm High Performance

- 7.0 - 26.5 GHz in Full Octave Frequency Bands
- Low VSWR - 1.15 Typical, 1.25 max
- Light Weight Aluminum Construction
- System or Laboratory use

Midwest Microwave's series of waveguide to SMA coaxial adapters provide a precise and efficient method of accomplishing the transition from waveguide to SMA miniature coaxial line. They possess excellent performance characteristics throughout the frequency bands specified for each waveguide size. They are constructed of lightweight aluminum and utilize passivated stainless steel connectors. The SMA female jack or male plug are standard and each unit is also available with a choke flange if it is so desired.



FREQUENCY RANGE (GHz)	MODEL NUMBER	FITS W/G SIZE	W/G FLANGE TYPE	SIZE INCHES (mm)		
				DIM A	DIM B	DIM C
7.0 - 11.0	WGA-3624-SF-W02-79	WR-102	No UG #	1.29 (32.8)	0.90 (22.9)	0.88 (22.4)
8.2 - 12.4	WGA-3625-SF-W90-79	WR-90	UG-135/U	1.29 (32.8)	0.90 (22.9)	0.73 (18.5)
10.0 - 15.0	WGA-3686-3F-W75-79	WR-75	No UG #	1.26 (32.0)	0.90 (22.8)	0.70 (17.7)
12.4 - 18.0	WGA-3627-SF-W62-79	WR-62	UG1665/U	1.20 (30.5)	0.88 (22.4)	0.69 (17.5)
18.0 - 26.5	WGA-3688-3F-W42-79	WR-42	UG595/U	1.00 (25.4)	0.73 (18.5)	0.59 (15.0)



- Notes: 1. To designate SMA Male connector, use 3614, 3615, 3696, 3617, and 3698 respectively and substitute "M" for "F" in the ninth digit of the Model No. Dimension "C" will change slightly.
 2. 18 - 26.5 GHz Models use 3.5 Precision Connectors compatible with SMA.
 3. To designate Choke Flange, substitute "C02" for "W02" etc. in Model No.

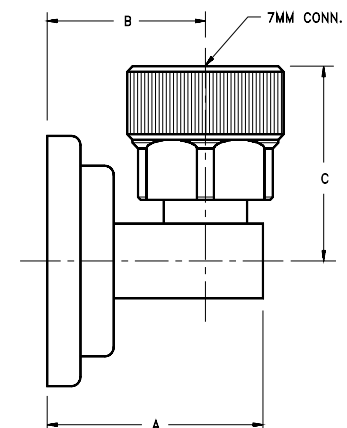
7mm Precision Performance

- Full Octave Frequency Bands
- Low VSWR - 1.15 Typical, 1.25 max
- Light Weight Aluminum Construction
- System or Laboratory use

Midwest Microwave's series of waveguide to 7mm coaxial adapters provide a precise method of accomplishing the transition from waveguide to precision 7mm coaxial line. They possess excellent performance characteristics and are totally compatible with all test equipment that utilize the IEEE 7mm standard connector. They are constructed of lightweight aluminum and utilize Midwest Microwaves own precision 7mm connectors that meet that standard.



FREQUENCY RANGE (GHz)	MODEL NUMBER	FITS W/G SIZE	W/G FLANGE TYPE	SIZE INCHES (mm)		
				DIM A	DIM B	DIM C
7.0 - 11.0	WGA-3674-7M-W02-79	WR-102	NO UG#	1.29 (32.8)	0.90 (22.9)	1.10 (27.9)
8.2 - 12.4	WGA-3675-7M-W90-79	WR-90	UG-135/U	1.29 (32.8)	0.90 (22.9)	1.14 (29.0)
12.4 - 18.0	WGA-3677-7M-W62-79	WR-62	UG1665/U	1.20 (30.5)	0.90 (22.9)	1.03 (26.2)



- Note: 1. To designate Choke Flange, substitute "C02" for "W02" etc. in Model No.