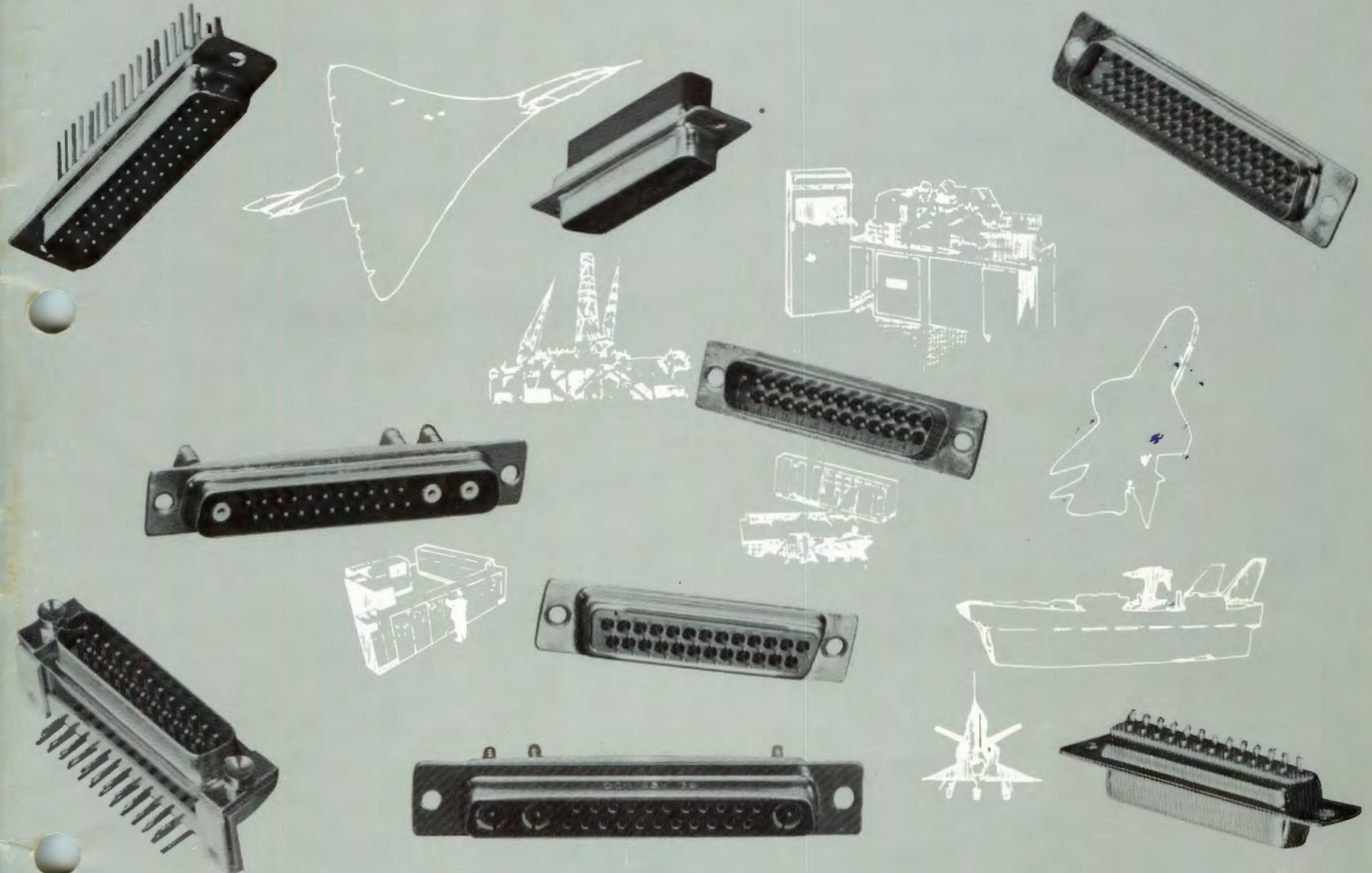


D subminiature connectors

OFFICE COPY

*Proposed Stock Items



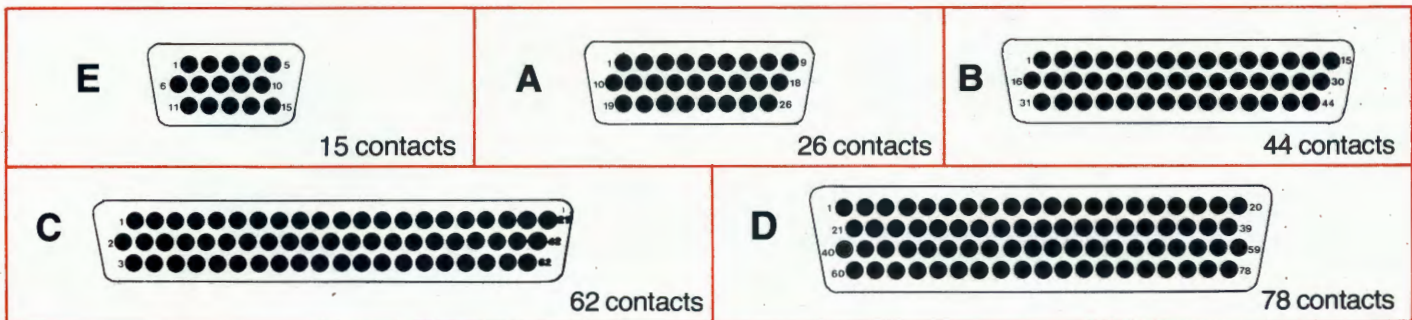
- Compact dimensions
- Increased range of contacts
- Trapezoidal polarising steel shells
- Wide choice of terminations
- Numerous accessories
- Rigid and float mountings
- Hermetic versions
- Selected QPL and CCQ approved types



SOURIAU

J 056-10-79BUK

high density D-sub connectors (8635 series)



ordering information

shell size	series	male or female	rigid mounting			float mounting		
			standard connectors	connectors with grommet	sealed connectors	standard connectors	connectors with grommet	sealed connectors
E 15 cts	8635	P	8635 15P	8635 15P015	8635 15P012*	8635F15P	8635F15P015	8635F15P012*
		S	8635 15S	8635 15S015	8635 15S012*	8635F15S	8635F15S015	8635F15S012*
A* 26 cts	8635	P	8635 26P	8635 26P015	8635 26P012*	8635F26P	8635F26P015	8635F26P012*
		S	8635 26S	8635 26S015	8635 26S012*	8635F26S	8635F26S015	8635F26S012*
B 44 cts	8635	P	8635 44P	8635 44P015	8635 44P012*	8635F44P	8635F44P015	8635F44P012*
		S	8635 44S	8635 44S015	8635 44S012*	8635F44S	8635F44S015	8635F44S012*
C* 62 cts	8635	P	8635 62P	8635 62P015	8635 62P012*	8635F62P	8635F62P015	8635F62P012*
		S	8635 62S	8635 62S015	8635 62S012*	8635F62S	8635F62S015	8635F62S012*
D 78 cts	8635	P	8635 78P	8635 78P015	8635 78P012	8635F78P	8635F78P015	8635F78P012
		S	8635 78S	8635 78S015	8635 78S012	8635F78S	8635F78S015	8635F78S012

Please consult us for availability of all 26 and 62 contacts types and also sealed versions of 15 and 44 contact layouts.

suffix L : No contacts – add suffix L to part number of crimp connectors when standard contacts are NOT required.

† : The suffix -012 sealed grommet also provides an interfacial seal on pin contact connectors.

contact part numbers

	type	part number	
standard	pin	8599-0722	
	socket	8599-0723	
MIL-C-24308A	pin	Souriau	8599-0902
		MIL	MS 39029/58-360

MIL-C-24308A

series

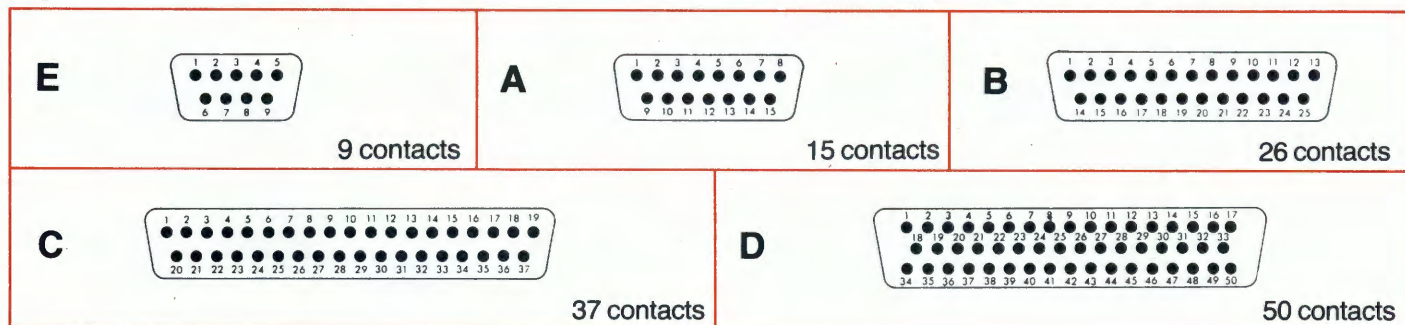
QPL approved

high spec.
removable crimp
D-sub
connectors

(8630 series) Mk. 3

layouts male insulator front view

contacts are individually numbered on both sides of the insulator



ordering information

shell size	series	male or female	rigid mounting			float mounting		
			standard connectors	connectors with grommet	sealed connectors†	standard connectors	connectors with grommet	sealed connectors†
E 9 cts	8630	P	8630 09P	8630 09P015	8630 09P012*	8631 09P	8631 09P015	8631 09P012*
		S	8630 09S	8630 09S015	8630 09S012*	8631 09S	8631 09S015	8631 09S012*
A 15 cts	8630	P	8630 15P	8630 15P015	8630 15P012*	8631 15P	8631 15P015	8631 15P012*
		S	8630 15S	8630 15S015	8630 15S012*	8631 15S	8631 15S015	8631 15S012*
B 25 cts	8630	P	8630 25P	8630 25P015	8630 25P012*	8631 25P	8631 25P015	8631 25P012*
		S	8630 25S	8630 25S015	8630 25S012*	8631 25S	8631 25S015	8631 25S012*
C 37 cts	8630	P	8630 37P	8630 37P015	8630 37P012*	8631 37P	8631 37P015	8631 37P012*
		S	8630 37S	8630 37S015	8630 37S012*	8631 37S	8631 37S015	8631 37S012*
D 50 cts	8630	P	8630 50P	8630 50P015	8630 50P012	8631 50P	8631 50P015	8631 50P012
		S	8630 50S	8630 50S015	8630 50S012	8631 50S	8631 50S015	8631 50S012

suffix L : No contacts – add suffix L to part number of crimp connectors when standard contacts are NOT required.

* : Please consult us for availability of these types.

† : The suffix -012 sealed grommet also provides an interfacial seal on pin contact connectors.

alternative contacts and part numbers (should be ordered separately)

AWG		standard copper alloys	constantan	thermocouple		alumel
				cuprotel lerium	chromel	
20/24	pin	8630-162	8630-466	8630-467	8630-432	8630-433
	socket	8630-165	8630-468	8630-469	8630-434	8630-435
26/28	pin	8630-4831	Reducing sleeve for 1mm dia contacts, wire size 0.08 to 0.21mm ² : 8630-292			
	socket	8630-6871				

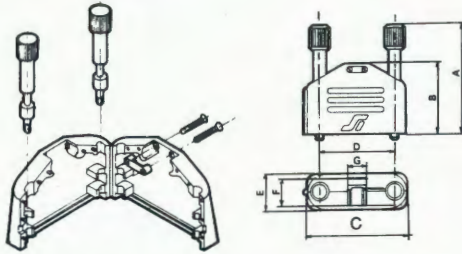
D-sub connector hoods

souriau

'Snap-together' plastic hoods

Metal clamp for strain relief

Material: Flame retardant UL rated 94V-0 thermoplastic
Temperature range: -55°C to +125°C
Colour: Black



shell size	part number
E	8630-3637A
A	8630-3638A
B	8630-3639A
C	8630-3640A
D	8630-3641A

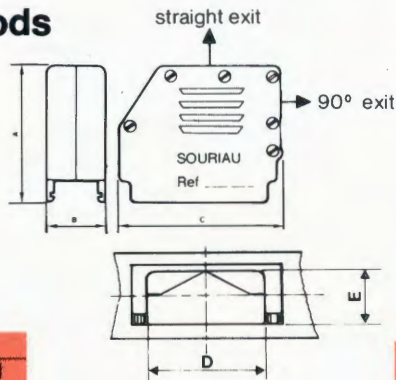
shell size	A	B	C	D	E	FMax	GMax
E	47.25	27.10	34.95	24.99	15.30	11.50	8.00
A	47.25	30.80	43.30	33.32	15.30	11.50	8.00
B	47.25	37.80	57.10	47.04	15.30	11.50	16.00
C	47.25	37.80	73.35	63.50	15.30	11.50	16.00
D	47.25	37.80	71.20	61.11	17.80	14.00	13.00

Universal plastic hoods

Material: Self extinguishing UL rated 94V-0 thermoplastic

Temperature range: -55°C to +125°C

Colour: Black – standard version
 Silver – metalised version (20µ nickel plating)

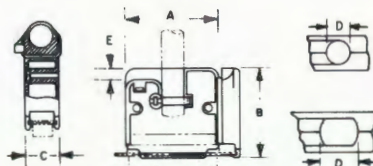


with metal clamp strain relief

shell size	part number	
	standard	metalised
E	8630-93C09A	8630-93C09M
A	8630-93C15A	8630-93C15M
B	8630-93C25A	8630-93C25M
C	8630-93C37A	8630-93C37M
D	8630-93C50A	8630-93C50M

shell size	A	B	C	D	E _{Min}	E _{Max}
E	29.80	15.50	24.30	5.70	1.9	10.2
A	29.80	15.50	32.50	5.70	1.9	10.2
B	46.50	15.50	46.00	12.10	2.6	10.2
C	46.50	15.50	60.50	12.10	2.6	10.2
D	48.50	180.0	56.50	14.30	4.4	12.7

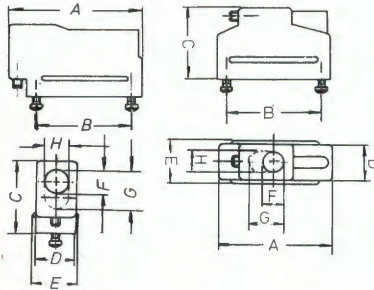
Material: Flame retardant UL rated 94V-2 thermoplastic
Temperature range: -55°C to +125°C
Color: Black



Straight and right angle hoods

Material: thermoplastic
Temperature range: -55°C to +125°C
Colour: Grey

shell size	part number	
	straight	right angle
E	8630-5165-09	8630-5165-09R
A	8630-5165-15	8630-5165-15R
B	8630-5165-25	8630-5165-25R
C	8630-5165-37	8630-5165-37R
D	8630-5165-50	8630-5165-50R



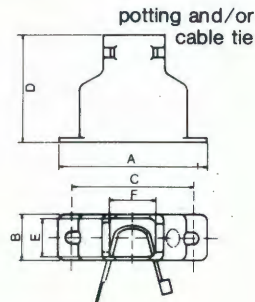
Right angle hood

As the right angle hood above but;
Material: Self extinguishing UL rated 94V-0 thermoplastic
Temperature range: -55°C to +125°C
Colour: Black
 25 way hood Part number: 8630-3672

shell size	At	As	B	C	D	E	F	G	H
E	30.9	38.0	25.0	25.4	12.7	14.3	7.1	—	7.1
A	39.3	46.3	33.3	25.4	12.7	14.3	9.1	—	9.1
B	53.2	60.1	47.0	31.7	12.7	14.3	—	12.5	9.1
C	69.4	76.4	63.5	38.1	12.7	14.3	—	17.6	9.1
D	67.1	74.0	61.1	38.1	15.5	17.0	—	18.6	11.9

Plastic straight exit hoods

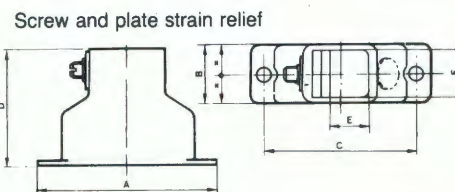
Material: Self extinguishing UL rated 94V-0 thermoplastic
Temperature range: -55°C to +125°C
Colour: Black



shell size	part number
E	8630-86A
A	8630-21A
B	8630-22A
C	8630-23A
D	8630-24A

shell size	A	B	C	D	E	F
E	30.60	12.50	25.00	29.00	9.90	9.90
A	38.90	12.50	33.32	29.00	9.90	11.90
B	52.80	12.50	47.05	35.00	9.90	16.40
C	69.10	12.50	63.50	41.00	9.90	23.40
D	66.70	15.30	61.10	41.00	12.70	23.40

Material: Self extinguishing UL rated 94V-0 thermoplastic
Temperature range: -55°C to +125°C
Colour: Black



shell size	part number
E	8630-3920
A	8630-3921
B	8630-3922
C	8630-3923
D	8630-3924

shell size	A	B	C	D	E _{Min}	E _{Max}	F
E	30.60	12.50	25.00	29.00	2.70	2.70	10.50
A	38.90	12.50	33.32	29.00	4.50	9.10	10.50
B	52.80	12.50	47.05	35.00	9.20	13.60	10.50
C	69.10	12.50	63.50	41.00	9.20	20.60	10.50
D	66.70	15.30	61.10	41.00	9.20	20.60	13.30

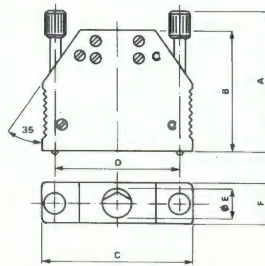
RFI-EMI shielded hoods

Material: Zinc alloy

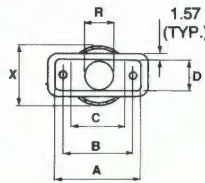
Temperature range: -55°C to +150°C

Plating: nickel

shell size	part number
E	8630-5169-014-09-01
A	8630-5169-014-15-01
B	8630-5169-014-25-01
C	8630-5169-014-37-01
D	8630-5167-014-50-01

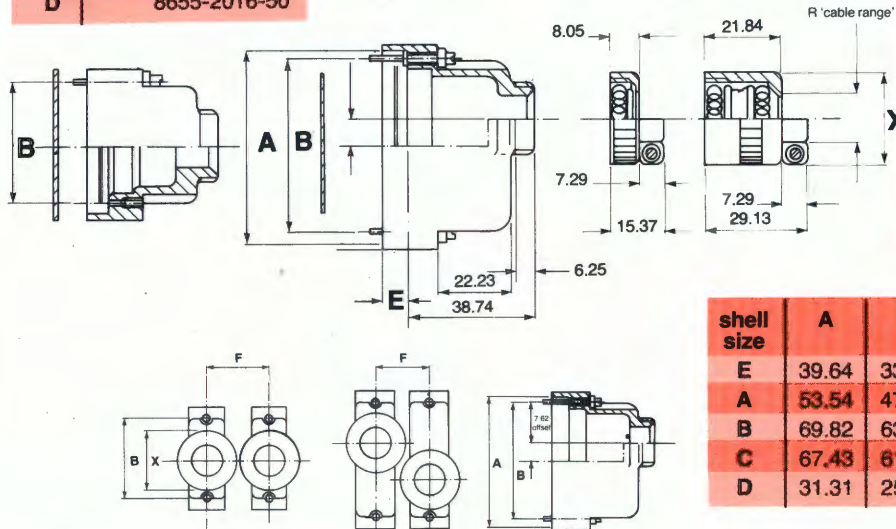


shell size	part number
E	8655-2016-09
A	8655-2016-15
B	8655-2016-25
C	8655-2016-37
D	8655-2016-50



*SOURIAU
Simpler.*

shell size	A	B	C	D	E	F
E	55.00	45.00	34.95	24.99	7.50	15.30
A	55.00	45.00	43.30	33.32	11.50	15.30
B	55.00	45.00	57.10	47.04	11.50	15.30
C	55.00	45.00	73.55	63.50	11.50	15.30
D	55.00	45.00	71.20	61.11	13.50	17.80



shell size	A	B	C	D	R cable range	X	F
E	39.64	33.22	27.91	13.08	3.99-9.53	22.10	24.64
A	53.54	47.04	41.68	13.08	7.16-12.70	25.40	22.86
B	69.82	63.50	58.12	13.08	7.16-12.70	25.40	22.86
C	67.43	61.11	55.73	15.88	10.33-15.87	28.45	25.91
D	31.31	25.00	19.69	13.08	3.18-6.35	19.05	21.59

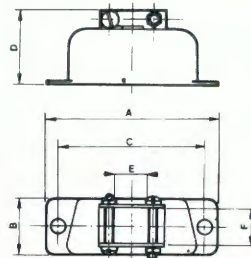
Metal hood with clamp and straight exit

Material: Low carbon steel

Finish: Cadmium plate, yellow chromate

Corrosion Resistance: Passes 50-hour exposure to salt spray in accordance with MIL-STD-202A, Method 101A, Condition B

shell size	part number
A	DAJS19678-1
B	DBJS19678-2
C	DCJS19678-3
D	DDJS19678-4



shell size	A	B	C	D	E	F
A	38.89	12.70	33.32	17.00	8.00	8.75
B	52.78	12.70	47.04	17.00	8.00	8.75
C	69.05	12.70	63.50	17.00	8.00	8.75
D	66.67	15.40	61.11	17.00	8.00	11.00

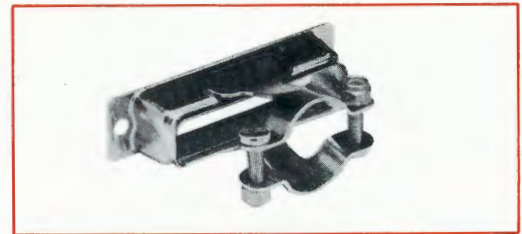
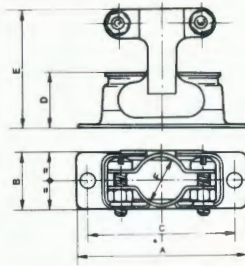
D-sub connector hoods and accessories

Metal hood with circular clamp and straight exit

Material: Low carbon steel

Finish: Cadmium plate, yellow chromate

Corrosion Resistance: Passes 50-hour exposure to salt spray in accordance with MIL-STD-202A, Method 101A, Condition B



shell size	part number
E	8630-10
A	8630-11
B	8630-12
C	8630-13
D	8630-14

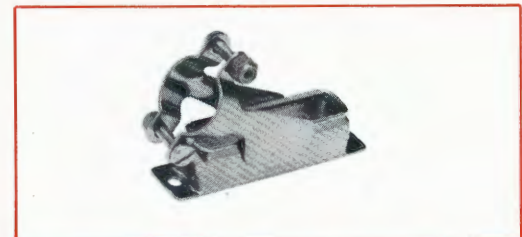
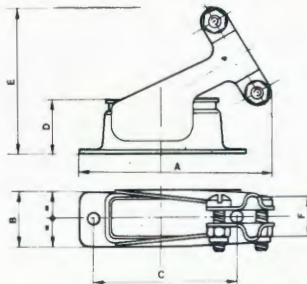
shell size	A	B	C	D	E	F
E	30.55	12.70	24.99	12.30	26.40	8.00
A	38.89	12.70	33.32	12.30	26.40	10.00
B	52.78	12.70	47.04	12.30	27.20	15.00
C	69.06	12.70	63.50	12.30	27.20	18.00
D	66.67	15.42	61.11	12.30	27.20	20.60

Metal hood with circular clamp and 30° exit

Material: Low carbon steel

Finish: Cadmium plate, yellow chromate

Corrosion Resistance: Passes 50-hour exposure to salt spray in accordance with MIL-STD-202A, Method 101A, Condition B



shell size	part number
E	8630-16
A	8630-17
B	8630-18
C	8630-19
D	8630-20

shell size	A	B	C	D	E	F
E	39.00	12.70	24.99	12.30	30.60	8.00
A	43.10	12.70	32.32	12.30	32.50	10.00
B	55.40	12.70	47.04	12.30	34.50	15.05
C	75.30	12.70	63.50	12.30	37.50	18.00
D	72.80	15.40	61.11	12.30	37.60	20.60

Screw locks

Material: Steel

Finish: Cadmium plate, yellow chromate

Corrosion Resistance: Passes 50-hour exposure to salt spray in accordance with MIL-STD-202A, Method 101A, Condition B

Note: Two screw lock assemblies are required per connector.

shell size	male screw locks				female screw locks			
	for pin connector with hood	for pin connector without hood or with universal hood	for socket connector with hood	for socket connector without hood or with universal hood	external thread M3			external thread 4-40 UNC
					standard version length 8.3mm	6.33mm long version	13mm long version	standard version length 8.3mm
E	8630-05	8630-05	8630-04	8630-05	8630-01	8630-01-017	8630-01-061	8630-01-060
A	8630-05	8630-05	8630-04	8630-05	8630-01	8630-01-017	8630-01-061	8630-01-060
B	8630-05	8630-05	8630-04	8630-05	8630-01	8630-01-017	8630-01-061	8630-01-060
C	8630-09	8630-08	8630-04	8630-05	8630-01	8630-01-017	8630-01-061	8630-01-060

D-sub connector accessories

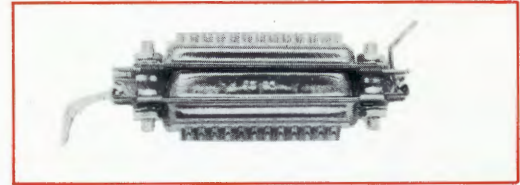
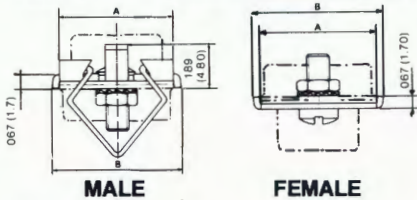
Lever locks

Material: Steel

Finish: Passivated

Corrosion Resistance: Passes 50-hour exposure to salt spray in accordance with MIL-STD-202A, Method 101A, Condition B

Note: Two spring latch assemblies are required per connector



shell size	A	B	part no. (M3 ext thrd)		part no. (4-40 NC 2A ext thrd)	
			female	male	female	male
E, A, B, C	12.50	14.30	8630-3425	8630-3427	8630-3425-60	8630-3427-60
D	15.30	17.10	8630-3426	8630-3428	8630-3426-60	8630-3428-60

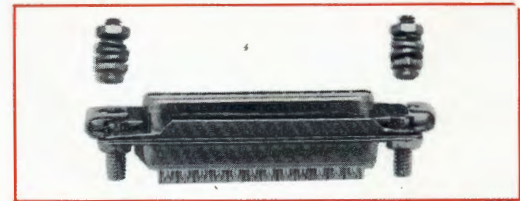
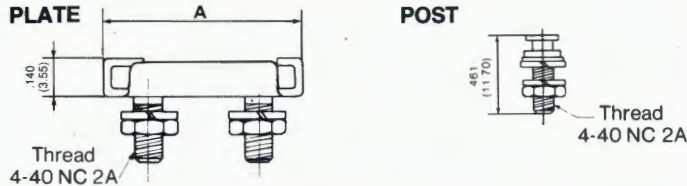
Slide locks

Material: Steel

Finish: Passivated

Corrosion Resistance: Passes 50-hour exposure to salt spray in accordance with MIL-STD-202A, Method 101A, Condition B

Note: Two locks are required per connector



shell size	plate	post	width	A
E	8630-77	8630-82	12.70	35.35
A	8630-78	8630-82	12.70	43.68
B	8630-79	8630-82	12.70	57.41
C	8630-80	8630-82	12.70	73.86
D	8630-81	8630-82	15.50	71.47

Quick release locks

Material: Steel

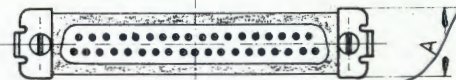
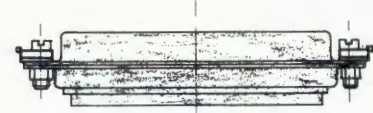
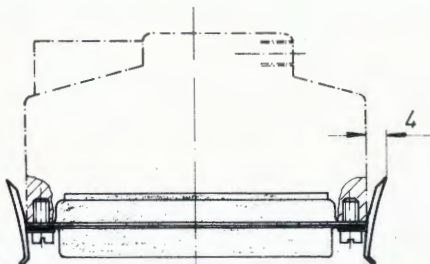
Finish: Passivated

Note: A pair of quick release locks is supplied against the part numbers listed alongside.

These locks can be used with all types of plastic and metal hoods illustrated in this catalogue except the plastic "snap together" hood (page 26) and the RFI-EMI hoods (page 28).

*Mr Neun
Germany.*

shell size	part number		dimensions	
	for straight cable entry	for angled cable entry	A	B
E, A, B, C	8630-5165-9909	8630-5165-9910	14.50	12.50
D	8630-5165-9911	8630-5165-9912	17.50	12.50

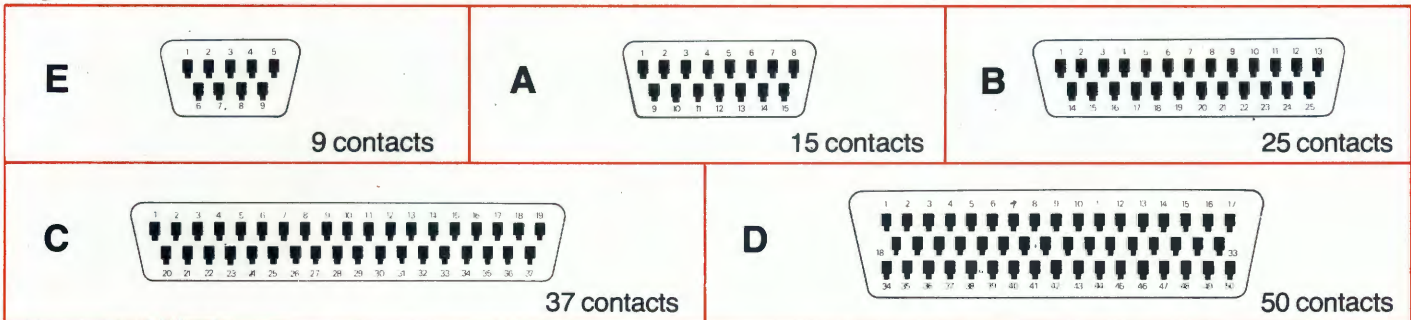


This range has been approved on
Pattern 110/BS9523 gauges

industrial crimp D-sub connectors (8634 series)

layouts male insulator front view

contacts are individually numbered on both sides of the insulator



ordering information (connectors without contacts)

shell size	series	male or female	standard rigid mount	float mount
E 9 cts	8634	P	8634 09PL	8634F 09PL
		S	8634 09SL	8634F 09SL
A 15 cts	8634	P	8634 15PL	8634F 15PL
		S	8634 15SL	8634F 15SL
B 25 cts	8634	P	8634 25PL	8634F 25PL
		S	8634 25SL	8634F 25SL
C 37 cts	8634	P	8634 37PL	8634F 37PL
		S	8634 37SL	8634F 37SL
D 50 cts	8634	P	8634 50PL	8634F 50PL
		S	8634 50SL	8634F 50SL

part number appendices (to be inserted after initial letters of part number (for fuller explanation of appendices see D/DP series page 7))

- L : Riveted nuts (M3) e.g. 8634L 25PL
- O : Riveted nuts (UNC4-40) e.g. 8634 O25PL
- V : Screw locking e.g. 8634 V25PL

part number suffices (to be added to end of part number)

- T : Tin plating
 - 8634 connectors with tin plated shells add suffix T to end of part number e.g. 8634 25PLT
- X : Electrical continuity
 - for versions with enhanced electrical continuity add suffix X to end of part number (male only) e.g. 8634 25PLX

tooling part numbers

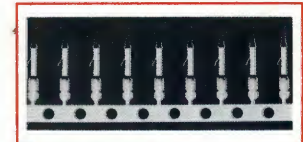
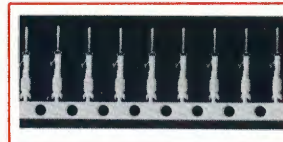
Manual crimp tool for: AWG 20/24: 8634-271
AWG 26/28: 8634-272A

Manual crimp tool for 500 contact reel
AWG 20/24: 5106-016-05-01

Plastic extraction tool (supplied with connector): 8634-210

contact part numbers

part numbers (contacts to be ordered separately)



AWG 20/24

packaging	plating	male	female
reel of 10,000	1	8634-220	8634-221
	2	8634-220-064	8634-221-064
box of 500 individual contacts	1	8634-234	8634-235
	2	8634-234-064	8634-235-064
reel of 500	1	8634-220-500	8634-221-500
	2	8634-220-064-500	8634-221-064-500

AWG 26/28

packaging	plating	male	female
reel of 5,000	1	8634-4510	8634-6510
	2	8634-4510-064	8634-6510-064
reel of 1,000	1	8634-4110	8634-6110
	2	8634-4110-064	8634-6110-064
box of 500 individual contacts	1	8634-350	8634-351
	2	8634-350-064	8634-351-064



industrial crimp D-sub connectors

(8634 series)

souriau

The Souriau 8634 connector features rear entry/rear removable, stamped and formed crimp contacts. This series can be intermated with other similar layout D-sub connector series. Contacts are available in reels for automatic crimping or in boxes for manual crimping. Souriau offers a fully automatic strip and crimp machine for low cost volume production.

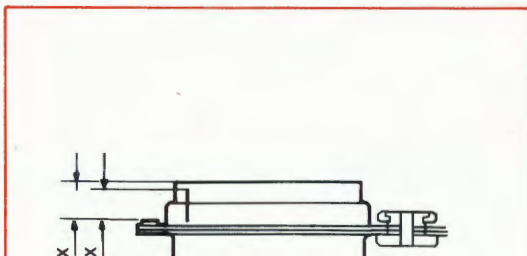


general characteristics

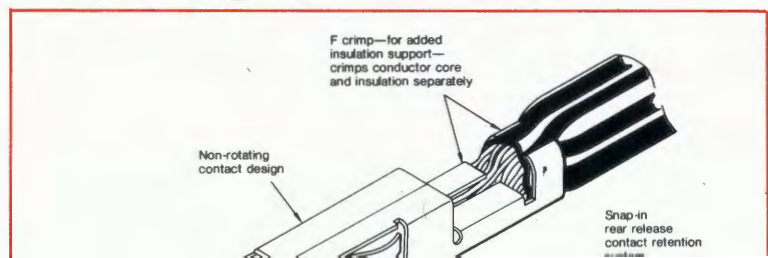
8634 series	
<ul style="list-style-type: none"> <input type="checkbox"/> Shell: <input type="checkbox"/> Insulator: <input type="checkbox"/> Operating temperature: <input type="checkbox"/> Contact material: <input type="checkbox"/> Contact plating: <input type="checkbox"/> Operating current: <input type="checkbox"/> Contact resistance: <input type="checkbox"/> Insulation resistance: <input type="checkbox"/> Maximum voltage: <input type="checkbox"/> Damp heat: <input type="checkbox"/> Wire sizes: <input type="checkbox"/> Contacts: 	<p>Cadmium or tin plated steel self-extinguishing thermoset, UL Class 94V-0 -55°C to +125°C</p> <p>copper alloy active zone - gold over nickel termination zone - (1) gold over nickel (2) electro-tinned</p> <p>5A per contact ≤ 10mΩ ≥ 5000MΩ in ambient conditions 1000V RMS 21 days AWG 20/24 or AWG 26/28</p> <p>crimp removable, retained by a spring clip. Supplied in reels of 10,000, 5,000, 1,000 or 500 cts. or separately in boxes of 500 contacts.</p>



outline dimensions



contact design



D subminiature connectors are widely utilised throughout the electronics industry. This catalogue outlines the SOURIAU range of standard types in regular production, including those which are qualified to international specifications (see page 31).

SOURIAU D connectors exhibit special advantages in low weight and compact dimensions. The well known trapezoidal shell eliminates any possibility of mismatch during connection and the series is designed and approved for a variety of applications, including:

- Data Processing
- Telecommunications
- Avionics
- Instrumentation

Many types of accessory complete the range, providing rigid or float mountings and cable junctions, together with a unique choice of termination styles:

- Solder bucket
- Crimp
- Wire wrap
- Straight and angled solder spills for printed circuits

Six different series of the SOURIAU D subminiature connector are featured in this catalogue:

1. **Original D** series. A low cost industrial version with a self-extinguishing thermoplastic insulator, with solder and wire wrap contacts for wire connections and straight or angled spills for printed circuits.
2. **8634** series. An industrial connector for volume production, featuring a self-extinguishing thermoset insulator and removable crimp contacts supplied in reels for automatic machine operation. A manual tool is also available for individual crimping.
3. **DM** series (Mark I). A high performance connector with a high temperature self-extinguishing thermoset insulator, suitable for use in severe environments. Available with the same choice of contact terminations as the Original D series.
4. **DMW** series. With similar characteristics to the DM series but offering combinations of standard and coaxial contacts.

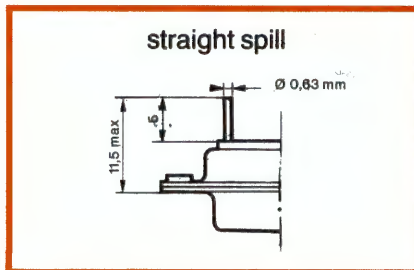
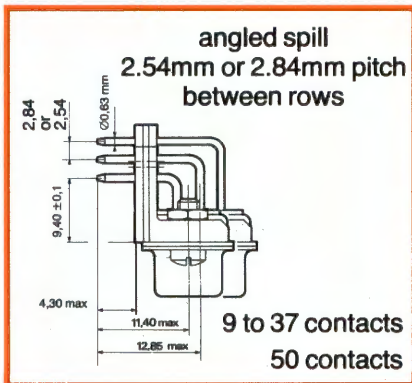
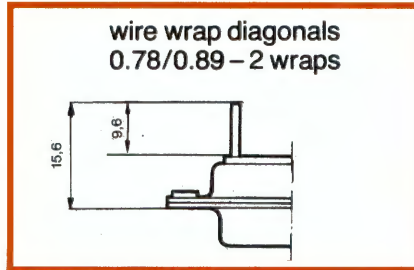
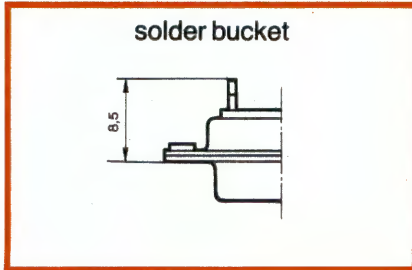
5. **8630/8631** series (Mark III). These versions are similar to the DM series but feature removable crimp contacts in a self-extinguishing thermoset insulator, also intended for stringent duties.
6. **DH** series. A hermetic model incorporating a glass and metal seal, with solder bucket and straight spill terminations.

Connectors with special materials and contact protection can also be supplied for exceptional operating conditions. Double density versions of the Original D series with crimp and solder removable contacts are available on request.

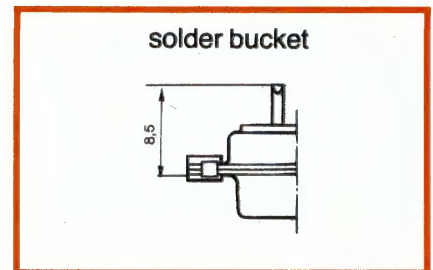
contents

Original D series		D, 8634, DM and 8630/8631 series	
Features and contact layouts	4	Panel cutouts	19
Part numbers and dimensions	5	Panel mounting	20
8634 series		DH series	
Features and contact layouts	6	Features and contact layouts	21
Part numbers and dimensions	7	Variants	22
Assembly instructions	7	Part numbers and dimensions	23
DM series (Mark I)		Panel cutouts	24
Features and contact layouts	8	Accessories	
Part numbers and dimensions	9	Plastic hoods	25 & 26
DMW series		Metal hoods	26 & 27
Features and contact layouts	10	Potting boots and protective caps	28
Part numbers and dimensions	11	Locking systems	29
Coaxial and power contacts	12		
Assembly instructions	13	Equivalents table:	
D, DM and DMW series		CCTU 08-14, MIL-C-24308 specifications and SOURIAU part numbers	31
Mounting brackets	14		
PC card drilling dimensions	15		
8630/8631 series (Mark III)			
Features and contact layouts	16		
Part numbers and dimensions	17		
Contact part numbers	18		
Assembly instructions	18		
		Shell dimensions, rigid and float mounting	30

rigid mounting



float mounting

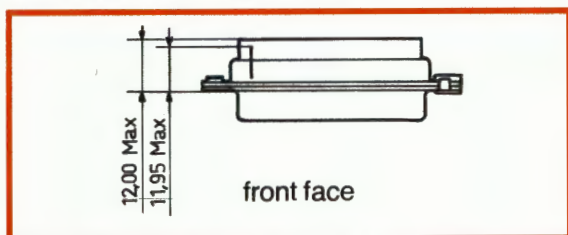


Refer to page 30 for shell dimensions for rigid and float mounting

shell	contacts: P: male S: female	solder bucket	straight spill	rigid mounting wire wrap		angled spill* with mounting brackets		float mounting solder bucket	
				3 wraps	2 wraps	2.54mm pitch between rows	2.84mm pitch between rows	rear mounting	front mounting
E	P	* DE 09P ✓	DE 09P300	DE 09P400	DE 09P600	DE 09P500	DE 09P800	DEF 09P	DEFR 09P
	S	* DE 09S ✓	DE 09S300	DE 09S400	DE 09S600	DE 09S500	DE 09S800	* DEF 09S	DEFR 09S
A	P	* DA 15P ✓	DA 15P300	DA 15P400	DA 15P600	DA 15P500	DA 15P800	DAF 15P ✓	DAFR 15P
	S	* DA 15S ✓	DA 15S300	DA 15S400	DA 15S600	DA 15S500	DA 15S800	* DAF 15S ✓	DAFR 15S
B	P	* DB 25P ✓	DB 25P300	DB 25P400	DB 25P600	* DB 25P500	DB 25P800	DBF 25P ✓	DBFR 25P
	S	* DB 25S ✓	DB 25S300	DB 25S400	DB 25S600	* DB 25S500	DB 25S800	* DBF 25S	DBFR 25S
C	P	* DC 37P ✓	DC 37P300 ✓	DC 37P400 ✓	DC 37P600	DC 37P500	DC 37P800	DCF 37P	DCFR 37P
	S	* DC 37S ✓	DC 37S300 ✓	DC 37S400 ✓	DC 37S600	DC 37S500	DC 37S800	* DCF 37S	DCFR 37S
D	P	* DD 50P ✓	DD 50P300	DD 50P400	DD 50P600	DD 50P500 ✓	DD 50P800	DDF 50P	DDFR 50P
	S	* DD 50S ✓	DD 50S300	DD 50S400	DD 50S600	DD 50S500 ✓	DD 50S800	* DDF 50S	DDFR 50S

*NOTE: may also be supplied without mounting brackets – add suffix 'C' to part number.

outline dimensions



Refer to page 30 for shell mounting dimensions.

connector part numbers

series	8634	F	25	P
- rigid mounting				
F float mounting, rear				
R float mounting, front				
contact layouts: 09 - 15 - 25 - 37 - 50				
P: connector with male contacts				
S: connector with female contacts				
Add suffix L for connectors to be supplied without contacts.				
Additional modification codes.				

contact part numbers



male contacts



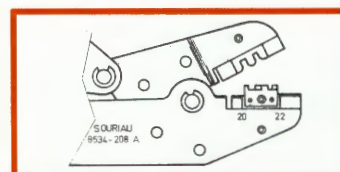
female contacts

strip contacts

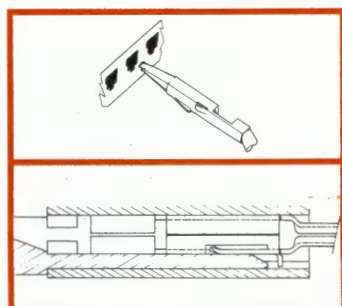
Order separately	Male	Female
Reel of 10,000	8634-220	8634-221
Box of 100	* 8634-232	* 8634-233
Box of 500	* 8634-234	* 8634-235

tooling part numbers

automatic crimp machine complete with tooling	8506-8634	} consult us for installation and operating instructions.
manual crimp tool	* 8634-208 A	
plastic contact extraction tool (supplied with connectors)	* 8634-210	

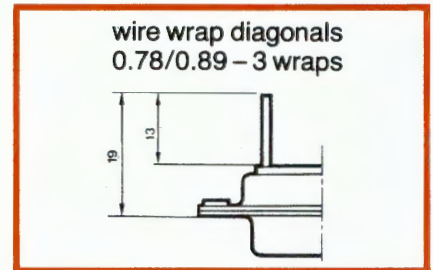
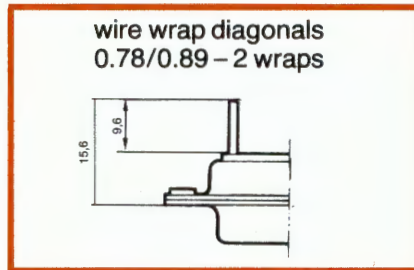
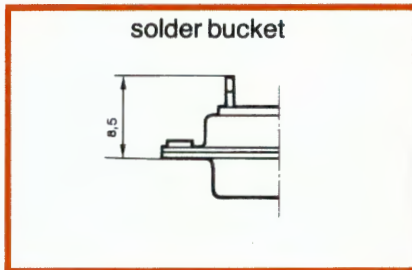


operating instructions

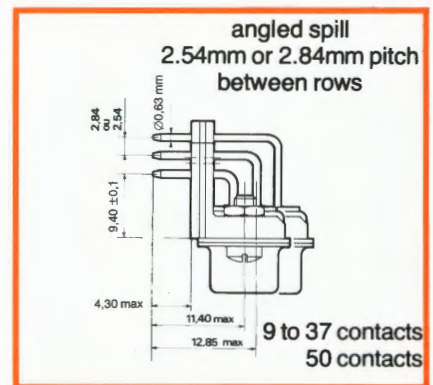
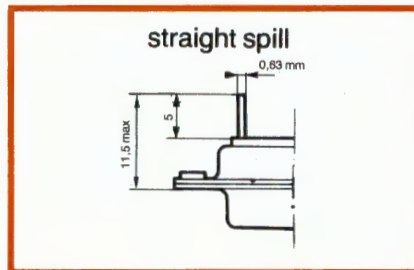
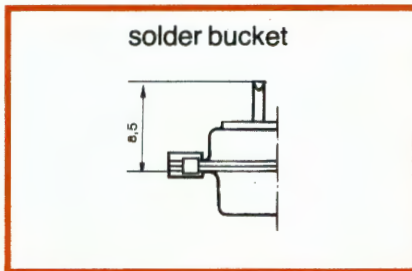


- * Contact crimping: refer to instructions supplied with the machine and manual tool.
- * Insertion of wire and contact assembly: introduce from the rear of the connector and push home until click engagement is observed.
- * Contact extraction: engage wire in the tapered slot of the plastic tool 8634-210. Slide the tool into the contact cavity from the rear until restrained by the retention clip. Hold in position and remove the assembly by pulling the wire.

rigid mounting



float mounting

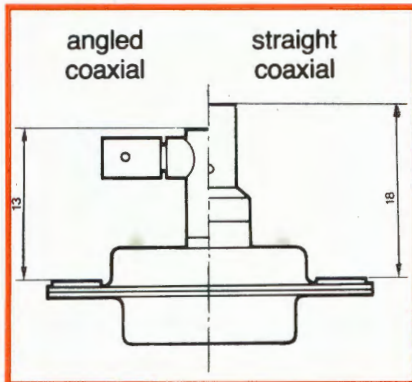


Refer to page 30 for shell dimensions for rigid and float mounting

shell	contacts: P: male S: female	solder bucket	straight spill	rigid mounting				float mounting	
				wire wrap		angled spill* with mounting brackets		solder bucket	
				3 wraps	2 wraps	2.54mm pitch between rows	2.84mm pitch between rows	rear mounting	front mounting
E	P	DEM 09P	DEM 09P300	DEM 09P400	DEM 09P600	DEM 09P500	DEM 09P800	DEMF 09P	DEMFR 09P
	S	DEM 09S	DEM 09S300	DEM 09S400	DEM 09S600	DEM 09S500	DEM 09S800	DEMF 09S	DEMFR 09S
A	P	DAM 15P ✓	DAM 15P300	DAM 15P400	DAM 15P600	DAM 15P500	DAM 15P800	DAMF 15P	DAMFR 15P
	S	DAM 15S	DAM 15S300	DAM 15S400	DAM 15S600	DAM 15S500	DAM 15S800	DAMF 15S ✓	DAMFR 15S
B	P	DBM 25P ✓	DBM 25P300	DBM 25P400	DBM 25P600	DBM 25P500	DBM 25P800	DBMF 25P	DBMFR 25P
	S	DBM 25S ✓	DBM 25S300	DBM 25S400	DBM 25S600	DBM 25S500	DBM 25S800	DBMF 25S	DBMFR 25S
C	P	DCM 37P	DCM 37P300	DCM 37P400	DCM 37P600	DCM 37P500	DCM 37P800	DCMF 37P	DCMFR 37P
	S	DCM 37S	DCM 37S300	DCM 37S400	DCM 37S600	DCM 37S500	DCM 37S800	DCMF 37S	DCMFR 37S
D	P	DDM 50P	DDM 50P300	DDM 50P400	DDM 50P600	DDM 50P500	DDM 50P800	DDMF 50P	DDMFR 50P
	S	DDM 50S	DDM 50S300	DDM 50S400	DDM 50S600	DDM 50S500	DDM 50S800	DDMF 50S	DDMFR 50S

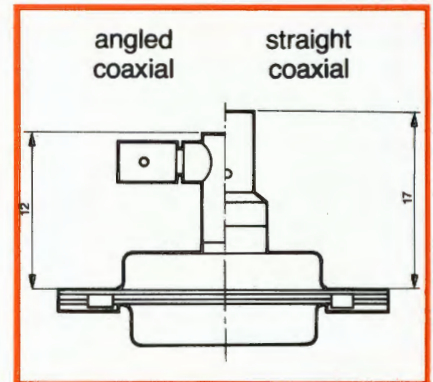
* NOTE: may also be supplied without mounting brackets – add suffix 'C' to part number.

coaxial contacts rigid mounting



Refer to page 30 for shell dimensions for rigid and float mounting

float mounting



- Dimensions of standard contacts (all terminations), refer to page 17 for DM series
- PC card drilling dimensions, page 17
- Coaxial and power contacts should be ordered separately, page 12

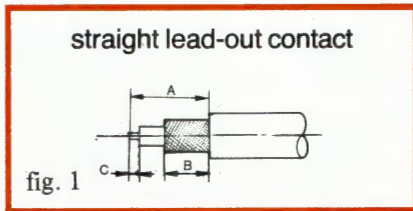
This letter changes with shell size as per A - - - - E. on page 10

connector part numbers

series	DBM	F	13W3	P	800
- Rigid mounting F - float mounting, rear FR - float mounting, front	<i>CASA. Stacks Sockets only with Floating Mount.</i>				
Contact layouts (see page 10) Example: 13W3 = 13 contacts - 10 standard (supplied with the connector) and 3 special (ordered separately)					
P: male connector S: female connector					
Standard contact terminations - Solder bucket 300 Straight spill *500 Angled spill (2.54mm pitch between rows) *800 Angled spill (2.84mm pitch between rows) 400 Wire wrap, 3 wraps 600 Wire wrap, 2 wraps					

* These types are supplied with mounting brackets fitted. If required without brackets, add suffix 'C'. Example: DBM-13W3P-800C.

wiring instructions for coaxial contacts



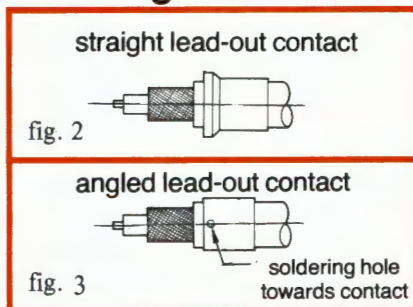
stripped lengths are the same for solder and crimp types.

contact type	straight contact			angled contact		
	A	B	C	A	B	C
KX 15	11	7,5	2	13	7,5	2
K 22 A - KX 3 A	10	6	2	11	6	2
KX 21 A	10	6	2	11	6	2
RG 188 BU RG 195 AU	11	7,5	2	11	7,5	2

(1) assembly

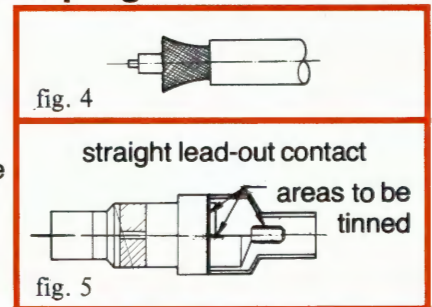
- Strip the cable as shown in Fig. 1
- Slide the sleeve on to the cable
- Insert the wire core into the inner contact, pushing the cable insulation up to the contact shank
- Apply heat to the contact and solder the wire core in position
- Close the cable screen braid around the contact
- Slide the sleeve on to the braid

soldering the screen braid



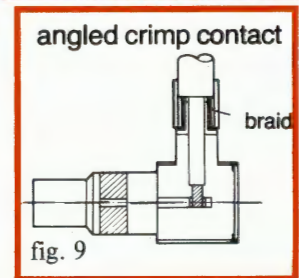
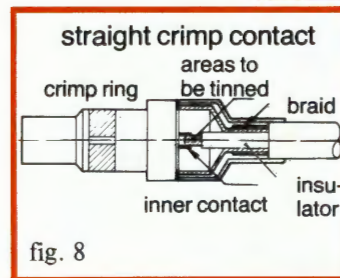
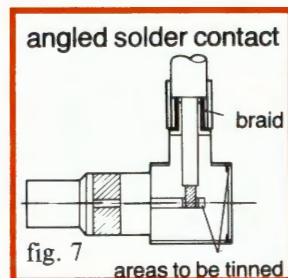
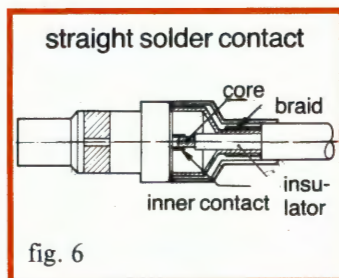
- Solder the ring on to the contact body.
- Apply solder through the hole provided on the periphery of the ring to join with the braid.

crimping the screen braid



- Crimp the ring to the body of the contact with tool ref. M22910/7-1 or M22520/5-01, using the appropriate locator.

for angled solder contacts solder the disc to the rear contact face



Tool	Locator	Cable
M 22910/7-1	612784 (Buchanan)	KX 21 A KX 22 A
	613371 (Buchanan)	KX 15 A
M 22520/5-01	Y 278 (Daniels)	KX 21 A KX 22 A KX 15 A

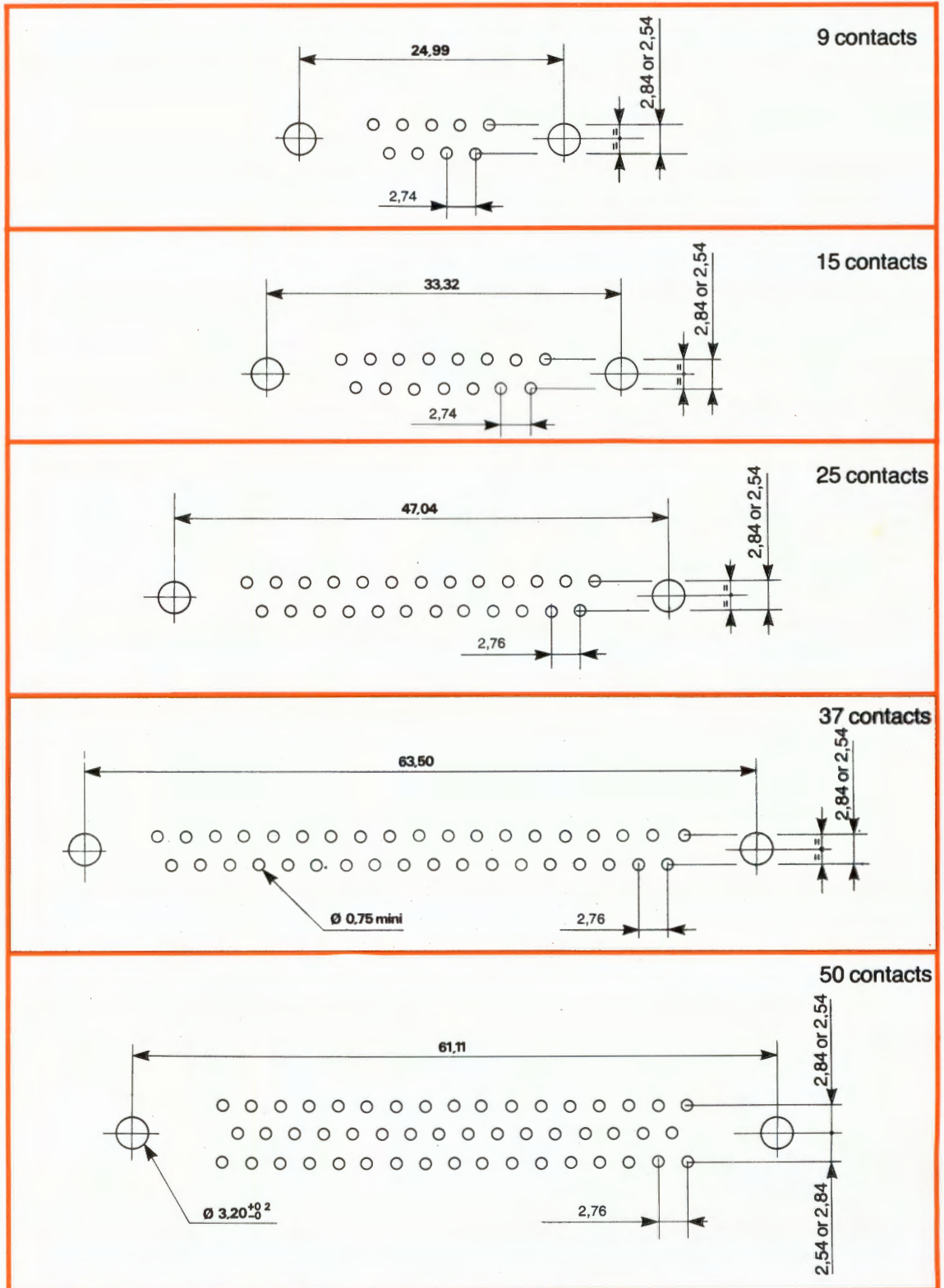
(2) contact insertion

- Insert the contact from the rear of the connector.
- Push the contact assembly into the insulator by the cable until engagement of the retention clip.

(3) contact extraction

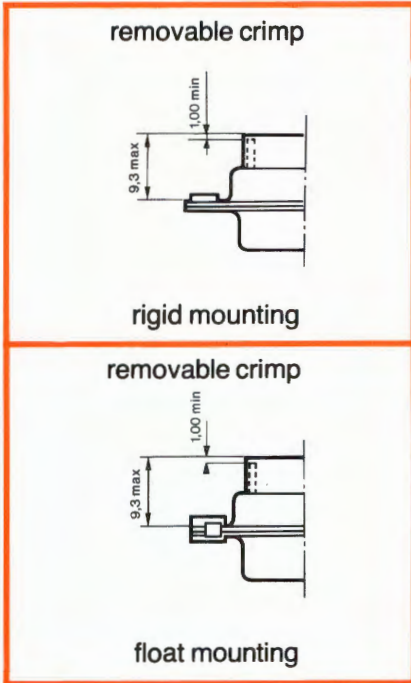
- Utilise extraction tool ref. 8630-07. *
- Insert the tool from the front of the connector.
- Push the tool until a click can be felt and the contact moves away.
- Press the plunger of the tool to disengage contact from the connector.

PC card drilling dimensions (mm)



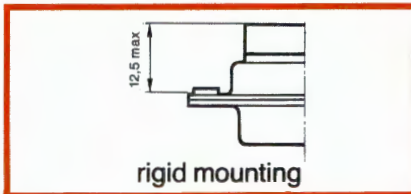
Positional tolerance of holes: $\varnothing 0.05$

standard version without rear grommet

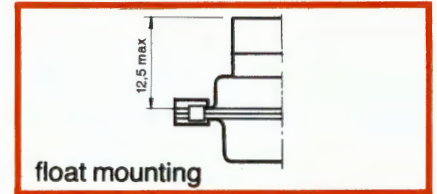


shell	contacts: P: male S: female	part numbers for connectors with standard removable crimp contacts		
		rigid mounting	float mounting	
			rear panel mounting	front panel mounting
E	P	8630 09 P	8631 09 P	8631 R 09 P
	S	8630 09 S	8631 09 S	8631 R 09 S
A	P	8630 15 P	8631 15 P	8631 R 15 P
	S	8630 15 S	8631 15 S	8631 R 15 S
B	P	8630 25 P	8631 25 P	8631 R 25 P
	S	8630 25 S	8631 25 S	8631 R 25 S
C	P	8630 37 P	8631 37 P	8631 R 37 P
	S	8630 37 S	8631 37 S	8631 R 37 S
D	P	8630 50 P	8631 50 P	8631 R 50 P
	S	8630 50 S	8631 50 S	8631 R 50 S

version with rear grommet



Refer to page 30 for shell dimensions for rigid and float mounting

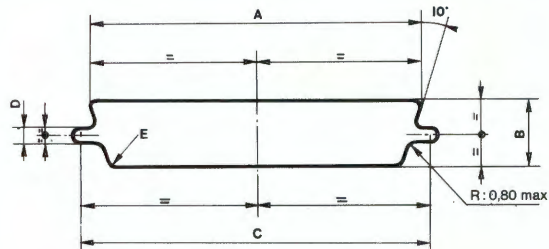


shell	contacts: P: male S: female	part numbers for connectors with standard removable crimp contacts					
		rigid mounting		float mounting			
		standard type	special (spring tine contact)	rear panel mounting		front panel mounting	
				standard type	special (spring tine contact)	standard type	special (spring tine contact)
E	P	8630 09P 226	8630 09P 220	8631 09P 226	8631 09P 220	8631 R 09P 226	8631 R 09P 220
	S	8630 09S 226	8630 09S 220	8631 09S 226	8631 09S 220	8631 R 09S 226	8631 R 09S 220
A	P	8630 15P 226	8630 15P 220	8631 15P 226	8631 15P 220	8631 R 15P 226	8631 R 15P 220
	S	8630 15S 226	8630 15S 220	8631 15S 226	8631 15S 220	8631 R 15S 226	8631 R 15S 220
B	P	8630 25P 226	8630 25P 220	8631 25P 226	8631 25P 220	8631 R 25P 226	8631 R 25P 220
	S	8630 25S 226	8630 25S 220	8631 25S 226	8631 25S 220	8631 R 25S 226	8631 R 25S 220
C	P	8630 37P 226	8630 37P 220	8631 37P 226	8631 37P 220	8631 R 37P 226	8631 R 37P 220
	S	8630 37S 226	8630 37S 220	8631 37S 226	8631 37S 220	8631 R 37S 226	8631 R 37S 220
D	P	8630 50P 226	8630 50P 220	8631 50P 226	8631 50P 220	8631 R 50P 226	8631 R 50P 220
	S	8630 50P 226	8630 50P 220	8631 50S 226	8631 50S 220	8631 R 50S 226	8631 R 50S 220

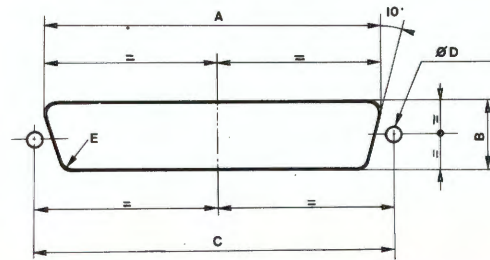
panel cutouts: D, 8634, DM and 8630 series

panel cutouts

Cutout for mounting connectors from front or rear of panel



Cutout for mounting from rear of panel only



shell	type of mounting	mounting position	A ± 0,1	B ± 0,1	C ± 0,1	D ± 0,05	E ± 0,1
E	rigid	front	22,20	13,00	24,99	3,20	2,10
		rear	20,50	11,40	24,99	3,20	3,30
	float	front	23,00	13,80	24,99	2,20	2,10
		rear	21,30	12,20	24,99	2,20	3,30
A	rigid	front	30,50	13,00	33,32	3,20	2,10
		rear	28,80	11,40	33,32	3,20	3,30
	float	front	31,30	13,80	33,32	2,20	2,10
		rear	29,60	12,20	33,32	2,20	3,30
B	rigid	front	44,30	13,00	47,04	3,20	2,10
		rear	42,50	11,40	47,04	3,20	3,30
	float	front	45,10	13,80	47,04	2,20	2,10
		rear	43,30	12,20	47,04	2,20	3,30
C	rigid	front	60,70	13,00	63,50	3,20	2,10
		rear	59,10	11,40	63,50	3,20	3,30
	float	front	61,50	13,80	63,50	2,20	2,10
		rear	59,80	12,20	63,50	2,20	3,30
D	rigid	front	58,30	15,80	61,11	3,20	2,10
		rear	56,30	14,10	61,11	3,20	3,30
	float	front	59,20	16,60	61,11	2,20	2,10
		rear	57,20	14,40	61,11	2,20	3,30

DH hermetic series

This series of solder contact connectors features gas-tight glass-to-metal sealing between contacts and insulator for absolute reliability in extreme operating conditions.

features

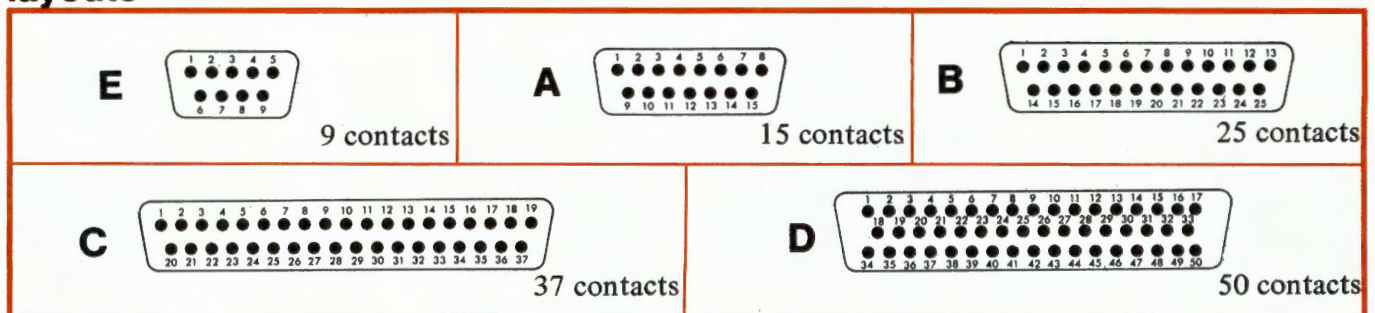
- * Shell: passivated cadmium-plated steel
- * Insulator: glass bead
- * Contacts: $\varnothing 1\text{mm}$
- * Operating temperature: -55°C to $+125^{\circ}\text{C}$, peak 1 min at $+175^{\circ}\text{C}$
- * Contact plating: gold or tin
- * Operating current: 7.5A per contact
- * Contact resistance: $\leq 14\text{m}\Omega$
- * Insulation resistance: $\geq 5000\text{M}\Omega$
- * Maximum voltage: 750V RMS
- * Mechanical endurance: 500 matings
- * Hermeticity: leakage rate is less than $1.04 \times 10^{-5}\text{cm}^3/\text{sec}$ at a differential pressure of 1 bar of a gas containing not less than 10% helium
- * Wire size: 0.06mm^2 (AWG 20)
- * Male contact terminations:
 - * solder bucket
 - * straight solder spills
- * Mountings:
 - * panel solder (with or without locking studs)
 - * screws



See
specification suffixes
overleaf

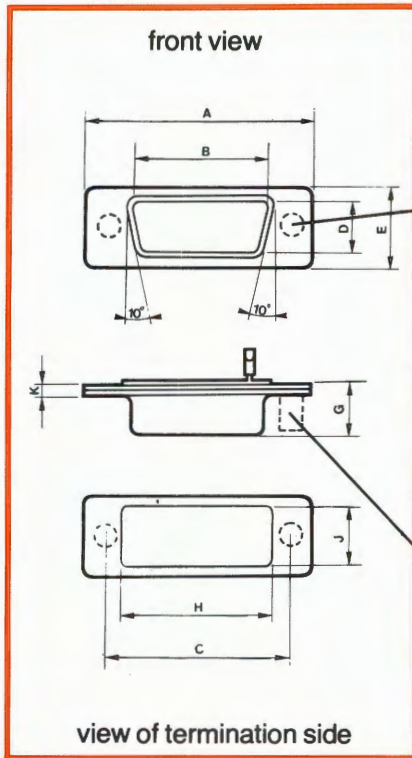
layouts

Front view of male insulator



Contacts are individually numbered on both sides of the insulator.

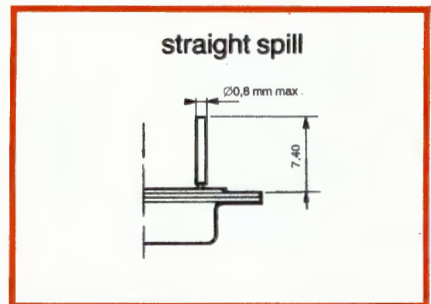
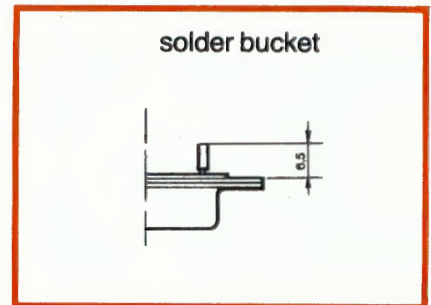
shell



Hole $\varnothing 3.2\text{mm}$
for screw mounting

Locking studs
(internal thread 4-40 UNC 2-B
for male locking studs
8630-02 to 8630-05)

contacts



shell	part numbers for connectors with male solder contacts fixing methods			dimensions in mm								
	panel solder	panel screws	locking studs	A	B	C screw mounted	D	E	G maxi	H	J	K
E	DEH 09P 002 DEH 09P 004 DEH 09P 007	DEH 09P 006 DEH 09P 008 DEH 09P 005	DEH 09P 102 DEH 09P 104 DEH 09P 107	30,80	16,94	24,99	8,41	12,54	8,50	18,40	9,40	2,30
A	DAH 15P 002 DAH 15P 004 DAH 15P 007	DAH 15P 006 DAH 15 P 008 DAH 15P 005	DAH 15P 102 DAH 15P 104 DAH 15P 107	39,14	25,27	33,32	8,41	12,54	8,50	23,70	9,40	2,30
B	DBH 25P 002 DBH 25P 004 DBH 25P 007	DBH 25P 006 DBH 25P 008 DBH 25P 005	DBH 25P 102 DBH 25P 104 DBH 25P 107	53,03	39,00	47,04	8,41	12,54	8,40	37,56	9,40	2,30
C	DCH 37P 002 DCH 37P 004 DCH 37P 007	DCH 37P 006 DCH 37P 008 DCH 37P 005	DCH 37P 102 DCH 37P 104 DCH 37P 107	69,29	55,45	63,50	8,41	12,54	8,40	53,97	9,40	2,30
D	DDH 50P 002 DDH 50P 004 DDH 50P 007	DDH 50P 006 DDH 50P 008 DDH 50P 005	DDH 50P 102 DDH 50P 104 DDH 50P 107	66,92	52,86	61,11	11,10	15,36	8,40	50,80	12,70	2,30

Refer to previous page for specifications: 002, 004, 007, 102, 104, 107, 005, 006, 008.

accessories suitable for all series

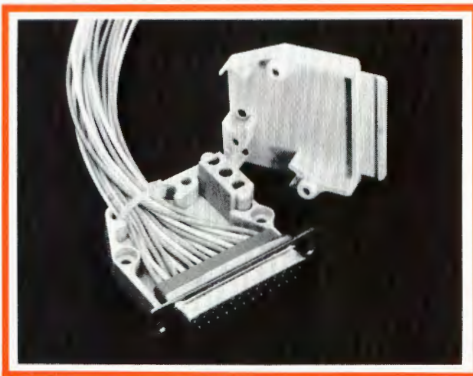
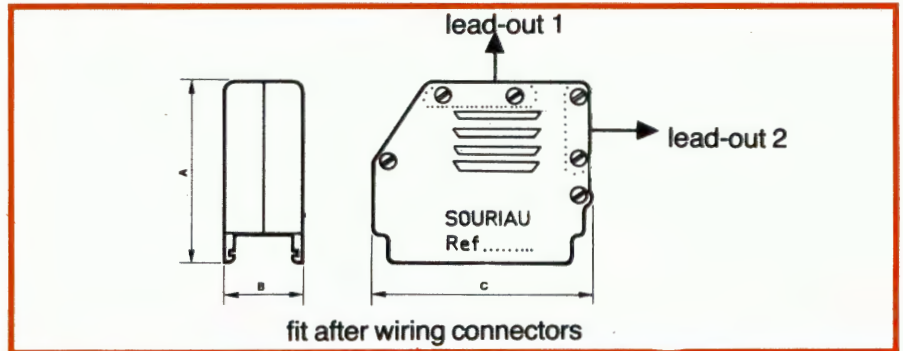
plastic hoods

2-part cable clamp

Material: self-extinguishing UL Class 94V-O

Straight or 90° lead-out

Temperature range: -55°C to +105°C

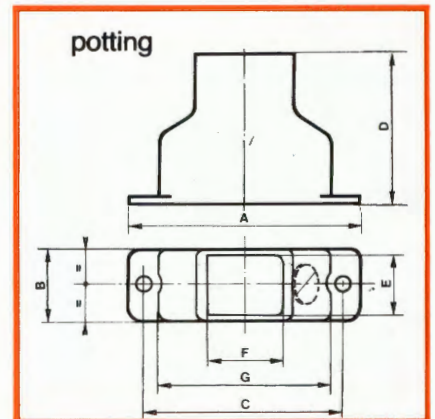
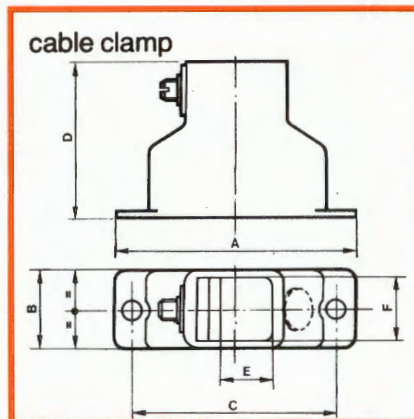


shell	part numbers	dimensions		
		A	B	C
E	* 8630.93 C 09	29,80	15,50	24,30
A	* 8630.93 C 15	29,80	15,50	32,50
B	* 8630.93 C 25	46,50	15,50	46,00
C	* 8630.93 C 37	46,50	15,50	60,50
D	* 8630.93 C 50	48,50	18,00	56,50

straight plastic hoods

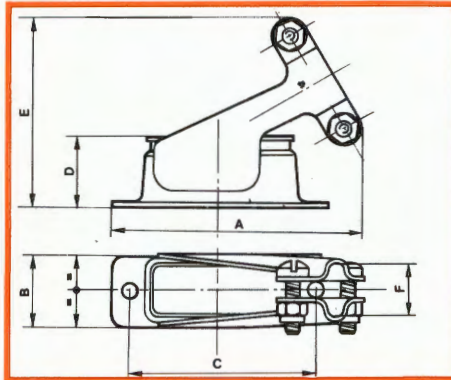
Material: self-extinguishing UL Class 94V-O

Temperature range: -55°C to +105°C



shell	part numbers		dimensions									
	cable clamp	potting	A	B	C	D	E		F	G	H	J
							mini	maxi				
E	8630-86 ✓	8630-879	30,60	12,50	24,99	29,00	2,70	7,10	10,50	10,50	10,50	20,60
A	8630-21	8630-207	38,90	12,50	33,32	29,00	4,50	9,10	10,50	12,50	10,50	29,00
B	8630-22 ✓	8630-208	52,80	12,50	47,04	35,00	9,20	13,60	10,50	17,00	10,50	43,00
C	8630-23	8630-209	69,10	12,50	63,50	41,00	9,20	20,60	10,50	24,00	10,50	59,20
D	8630-24	8630-210	66,70	15,30	61,11	41,00	9,20	20,60	13,30	24,00	13,50	56,80

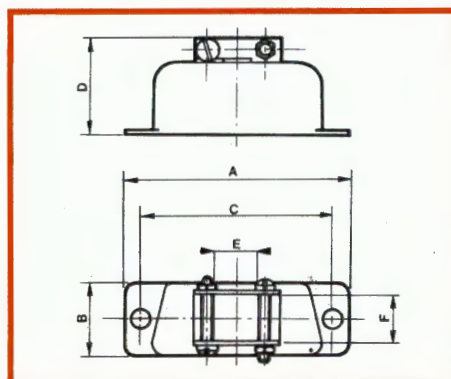
metal hoods with angled cable clamp



Material: steel
Plating: cadmium bichromate
30° angled cable exit

shell	part numbers	dimensions					
		A	B	C	D	E	F
E	8630-16	39,00	12,70	24,99	12,30	30,60	8,00
A	8630-17	43,10	12,70	32,32	12,30	32,50	10,00
B	8630-18	55,40	12,70	47,04	12,30	34,30	15,05
C	8630-19	75,30	12,70	63,50	12,30	37,50	18,00
D	8630-20	72,80	15,40	61,11	12,30	37,60	20,60

metal hoods with flat cable clamp



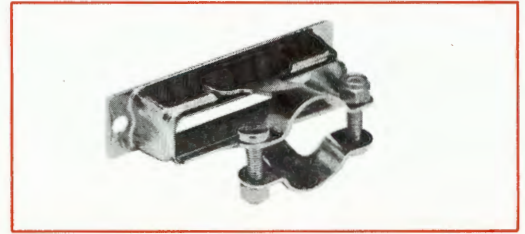
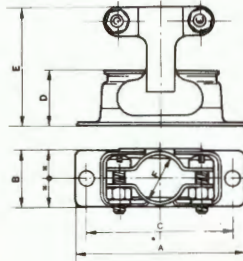
Material: steel
Plating: cadmium bichromate

shell	part numbers	dimensions					
		A	B	C	D	E	F
E							
A	DA.J/S(19678-1)	38,89	12,30	33,32	17,00	8,00	8,00
B	DB.J/S(19678-2)	52,78	12,30	47,04	17,00	12,30	8,00
C	DC.J/S(19678-3)	69,05	12,30	63,50	17,00	34,30	8,00
D	DD.J/S(19678-4)	66,67	15,11	61,11	17,00	34,30	8,00

D-sub connector hoods and accessories

Metal hood with circular clamp and straight exit

Material: Low carbon steel
Finish: Cadmium plate, yellow chromate
Corrosion Resistance: Passes 50-hour exposure to salt spray in accordance with MIL-STD-202A, Method 101A, Condition B

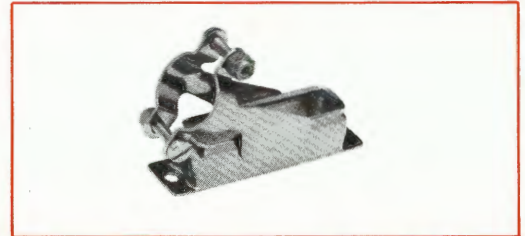
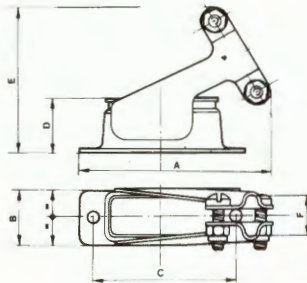


shell size	part number
E	8630-10
A	8630-11
B	8630-12
C	8630-13
D	8630-14

shell size	A	B	C	D	E	F
E	30.55	12.70	24.99	12.30	26.40	8.00
A	38.89	12.70	33.32	12.30	26.40	10.00
B	52.78	12.70	47.04	12.30	27.20	15.00
C	69.06	12.70	63.50	12.30	27.20	18.00
D	66.67	15.42	61.11	12.30	27.20	20.60

Metal hood with circular clamp and 30° exit

Material: Low carbon steel
Finish: Cadmium plate, yellow chromate
Corrosion Resistance: Passes 50-hour exposure to salt spray in accordance with MIL-STD-202A, Method 101A, Condition B



shell size	part number
E	8630-16
A	8630-17
B	8630-18
C	8630-19
D	8630-20

shell size	A	B	C	D	E	F
E	39.00	12.70	24.99	12.30	30.60	8.00
A	43.10	12.70	32.32	12.30	32.50	10.00
B	55.40	12.70	47.04	12.30	34.50	15.05
C	75.30	12.70	63.50	12.30	37.50	18.00
D	72.80	15.40	61.11	12.30	37.60	20.60

Screw locks

Material: Steel
Finish: Cadmium plate, yellow chromate
Corrosion Resistance: Passes 50-hour exposure to salt spray in accordance with MIL-STD-202A, Method 101A, Condition B

Note: Two screw lock assemblies are required per connector.

shell size	male screw locks				female screw locks			
	for pin connector with hoods	for pin connector without hood or with universal hood	for socket connector with hoods	for socket connector without hood or with universal hood	external thread M3			external thread 4-40 UNC
					standard version length 8.3mm	6.33mm long version	13mm long version	standard version length 8.3mm
E	8630-05	8630-05	8630-04	8630-05	8630-01	8630-01-017	8630-01-061	8630-01-060
A	8630-05	8630-05	8630-04	8630-05	8630-01	8630-01-017	8630-01-061	8630-01-060
B	8630-05	8630-05	8630-04	8630-05	8630-01	8630-01-017	8630-01-061	8630-01-060
C	8630-09	8630-08	8630-04	8630-05	8630-01	8630-01-017	8630-01-061	8630-01-060
D	8630-25	8630-15	8630-02	8630-03	8630-01	8630-01-017	8630-01-061	8630-01-060

MALE



FEMALE



these female screw locks are for use with Universal hoods, 'Snap-together' hoods or on connectors without hoods.

dimension A connector fitted with hood		dimension A connector without hood or with universal hood	
shell sizes E, A, B, C	shell size D	shell sizes E, A, B, C	shell size D
14.0	16.6	13.3	15.9

locking systems

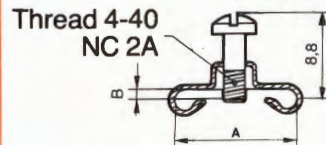
All types are supplied complete with assembly instructions.

screw type: connectors fitted with hoods 8630-93Cxx or without hoods

shell	part numbers		A ±0,1	B
	male	female		
E-A	*			
B-C	8630-05 ✓	*	13,30	1,10
D	8630-03 ✓	8630-01 ✓	15,90	1,10

male: assembled captive screw
female: locking body

male: order 2 per connector



female: order 2 per connector



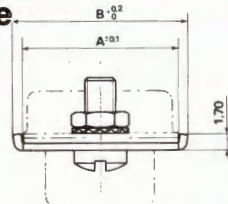
screw type:

for connectors with hoods except type 8630-93Cxx

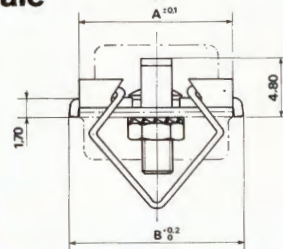
shell	part numbers		A ±0,1	P
	male	female		
E-A				
B-C	8630-04 ✓	*	14,00	2,20
D	8630-02 ✓	8630-01 ✓	16,60	2,20

male: assembled captive screw
female: locking body

female



male



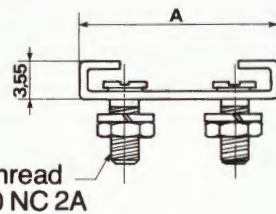
NOTE: radius of rotation of lever about its axis: 15.5mm

female plate: 2 per connector
male plate: 2 per connector

lever lock type

shell	part numbers		A	B
	female plate	male plate		
E-A	8630-3425 ✓	8630-3427 ✓	12,50	14,30
B-C				
D	8630-3426 ✓	8630-3428 ✓	15,30	17,10

plate



stud



slide lock type

supplied unassembled

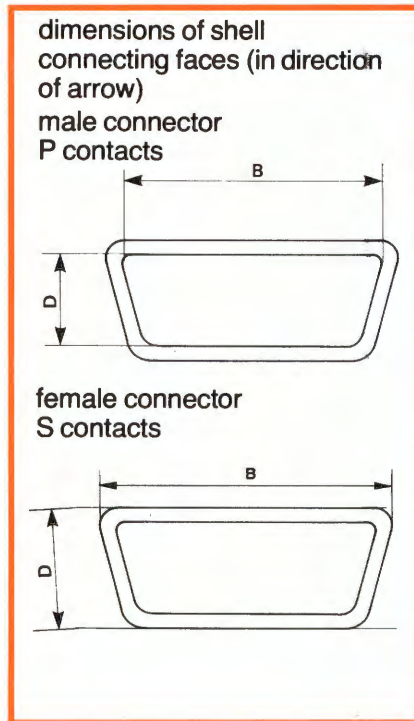
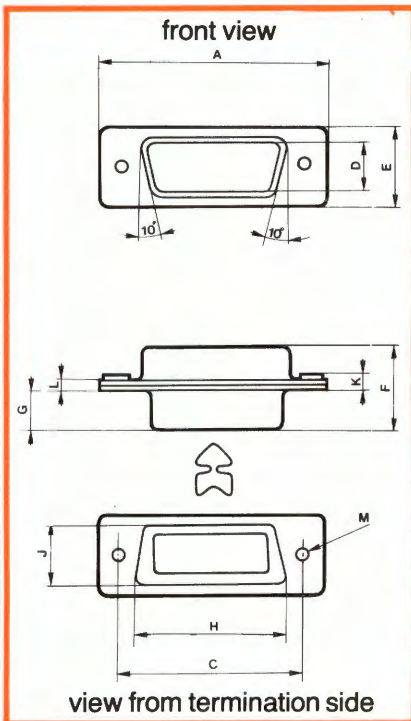
shell	part numbers plates + 2 studs	Larg.	A
A	8630-78	12,70	43,68
*	*	12,70	57,41
C	8630-80	12,70	73,86
*	*	15,50	71,47

part number 8630-82 *

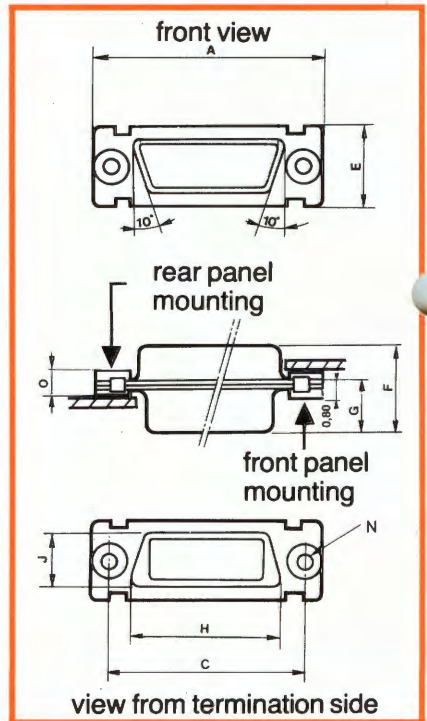
plate: 1 per connector
stud: 2 per connector

shell dimensions

rigid mounting



float mounting



shell	contacts: P: male S: female	dimensions														
	D - DMW 8634-8630 DM - 8631	A	B	C	D	E	F	G	H	J	K	L	M	N	O	
E	P	+0,25	±0,05	±0,06	±0,05	+0,26	max.	+0,15	±0,10	±0,05	±0,10					max.
	S	0				0		0								
A	P	30,57	16,94	24,99	8,41	12,32	10,99	5,90	19,25	10,80	1,00	0,80	3,10	2,20	3,05	
	S	30,57	16,30	24,99	7,89	12,32	11,19	6,10	19,25	10,80	1,00	0,80	3,10	2,20	3,05	
B	P	38,91	25,27	33,32	8,41	12,32	10,99	5,90	27,59	10,80	1,00	0,80	3,10	2,20	3,05	
	S	38,91	24,63	33,32	7,89	12,32	11,19	6,10	27,59	10,80	1,00	0,80	3,10	2,20	3,05	
C	P	52,80	39,00	47,04	8,41	12,32	10,89	5,70	41,33	10,80	1,00	0,80	3,10	2,20	3,05	
	S	52,80	38,35	47,04	7,89	12,32	11,19	6,10	41,33	10,80	1,00	0,80	3,10	2,20	3,05	
D	P	69,08	55,45	63,50	8,41	12,32	10,89	5,70	57,79	10,80	1,00	0,80	3,10	2,20	3,05	
	S	69,08	54,81	63,50	7,89	12,32	11,19	6,10	57,79	10,80	1,00	0,80	3,10	2,20	3,05	
E	P	66,69	52,86	61,11	11,10	15,12	10,89	5,70	55,40	13,60	1,00	0,80	3,10	2,20	3,05	
	S	66,69	52,35	61,11	10,67	15,12	11,19	6,10	55,40	13,60	1,00	0,80	3,10	2,20	3,05	

cross reference list MIL-C-24308/SOURIAU

QPL approved (USA), qualification no. 24308-169-77
Effective date: 13 January 1977

rigid mounting	MALE CONNECTORS - P				FEMALE CONNECTORS - S			
	crimp contacts		solder contacts		crimp contacts		solder contacts	
number of contacts	MIL-C.24308	SOURIAU	MIL-C.24308	SOURIAU	MIL-C.24308	SOURIAU	MIL-C.24308	SOURIAU
9	M24308/4-1	SEMA 09P	M24308/3-1	DEM 09P 032	M24308/2-1	SEMA 09S	M24308/1-1	DEM 09S 032
15	M24308/4-2	SAMA 15P	M24308/3-2	DAM 15P 032	M24308/2-2	SAMA 15S	M24308/1-2	DAM 15S 032
25	M24308/4-3	SBMA 25P	M24308/3-3	DBM 25P 032	M24308/2-3	SBMA 25S	M24308/1-3	DBM 25S 032
37	M24308/4-4	SCMA 37P	M24308/3-4	DCM 37P 032	M24308/2-4	SCMA 37S	M24308/1-4	DCM 37S 032
50	M24308/4-5	SDMA 50P	M24308/3-5	DDM 50P 032	M24308/2-5	SDMA 50S	M24308/1-5	DDM 50S 032

cross reference list CCTU 08-14/SOURIAU

Appendix 1A to special regulation no. 78, sheet 2/2
 - implementation: 22 April 1975
 - manufacturer: Société **Souriau**
 13, rue Galliéni, Boulogne-Billancourt-Cedex
 - factories: La Ferté-Bernard, Champagné
 - specifications: CCTU 0814

item no	type	number of contacts	Rectangular multicontact steel shell connectors qualified by the Contrôle Centralisé de Qualité (France)								approval certificate	
			Modes type of mounting	solder contacts style A type		crimp contacts style B type		solder contacts style A type		crimp contacts style B type		
				N: fixed F: float	CCTU	SOURIAU	CCTU	SOURIAU	CCTU	SOURIAU		CCTU
02	HE 501	9	N	HE 501 N 09 AP	DEM 09 P	HE 501 N 09 BP	8630 09 P	HE 501 N 09 AS	DEM 09 S	HE 501 N 09 BS	8630 09 S	
			F	HE 501 F 09 AP	DEMF 09 P	HE 501 F 09 BP	8631 09 P	HE 501 F 09 AS	DEMF 09 S	HE 501 F 09 BS	8631 09 S	
		15	N	HE 501 N 15 AP	DAM 15 P	HE 501 N 15 BP	8630 15 P	HE 501 N 15 AS	DAM 15 S	HE 501 N 15 BS	8630 15 S	
			F	HE 501 F 15 AP	DAMF 15 P	HE 501 F 15 BP	8631 15 P	HE 501 F 15 AS	DAMF 15 S	HE 501 F 15 BS	8631 15 S	
		25	N	HE 501 N 25 AP	DBM 25 P	HE 501 N 25 BP	8630 25 P	HE 501 N 25 AS	DBM 25 S	HE 501 N 25 BS	8630 25 S	
			F	HE 501 F 25 AP	DBMF 25 P	HE 401 F 25 BP	8631 25 P	HE 501 F 25 AS	DBMF 25 S	HE 501 F 25 BS	8631 25 S	
		37	N	HE 501 N 37 AP	DCM 37 P	HE 501 N 37 BP	8630 37 P	HE 501 N 37 AS	DCM 37 S	HE 501 N 37 BS	8630 37 S	
			F	HE 501 F 37 AP	DCMF 37 P	HE 501 F 37 BP	8631 37 P	HE 501 F 37 AS	DCMF 37 S	HE 501 F 37 BS	8631 37 S	
		50	N	HE 501 N 50 AP	DCM 50 P	HE 501 N 50 BP	8630 50 P	HE 501 N 50 AS	DCM 50 S	HE 501 N 50 BS	8630 50 S	
			F	HE 501 D 50 AP	DCMF 50 P	HE 501 F 50 BP	8631 50 P	HE 501 F 50 AS	DCMF 50 S	HE 501 F 50 BS	8631 50 S	

No. 74-39 of March 1974