



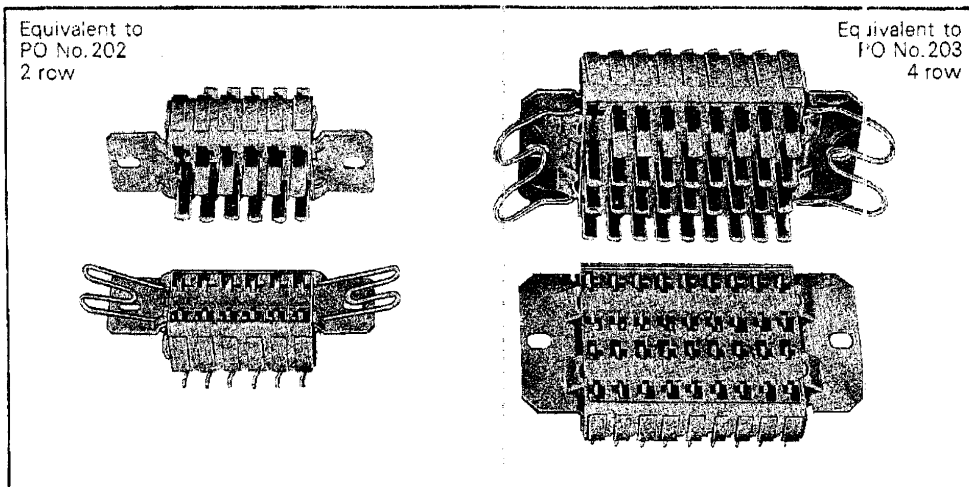
McMurdo

700 Series Connectors

A range of medium current connectors with 7 to 71 contacts, and a polarising key fitted in the end position as standard. If required the polarising key can be fitted in other positions to special order. Accessories include covers with reversible cable clamps for top or side entry, and latching springs.

APPLICATIONS

- Solder tail plugs and sockets for line to panel.
- P.C. tail sockets only for line to printed wiring panel.
- Note: P.C. tail sockets will mate with soldertail plugs.



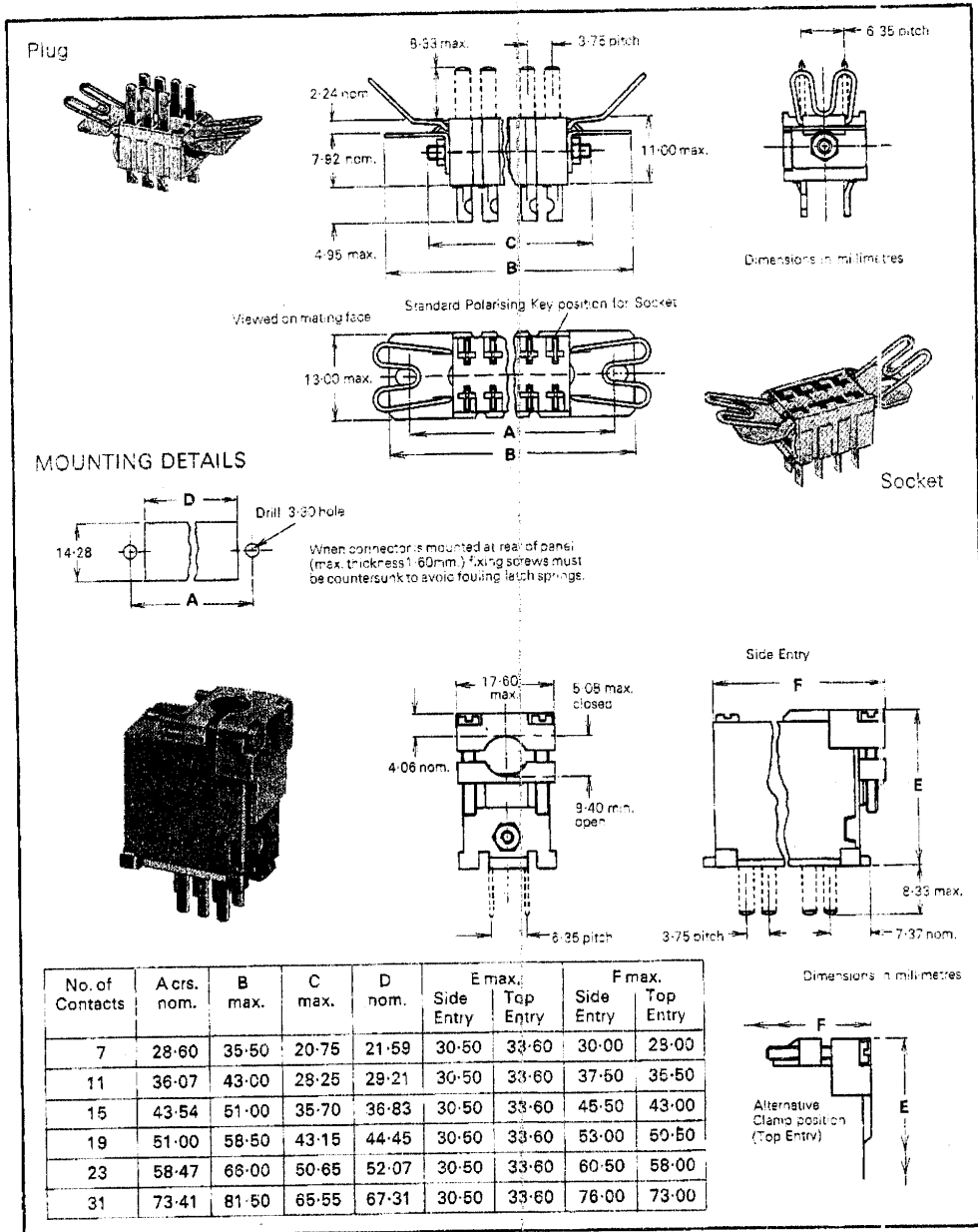
MATERIALS

Plug and socket bodies	Glass filled polyester
Plug pins	Brass, plated hard acid gold over nickel
Socket Contacts	Phosphor bronze, plated hard acid gold over nickel
Covers	Plastic clad Aluminium
Latching Spring	Stainless Steel

TECHNICAL DATA Plug and socket engaged—dry

Working voltage	500 V d.c. or a.c. (peak)
Breakdown voltage	2 kV min.
Insulation resistance	10^9 M Ω
Contact resistance	10 m Ω max. typically 2.5 m Ω
Current rating per contact	5 A d.c. or a.c. (r.m.s.) at 20°C 3 A d.c. or a.c. (r.m.s.) at 55°C 1 A d.c. or a.c. (r.m.s.) at 70°C
Climatic Category	25/85/21
Insertion force per contact	2.0 N typically
Withdrawal force per contact	1.3 N typically

700 Series Connectors and Covers 2 Row



ORDERING INFORMATION

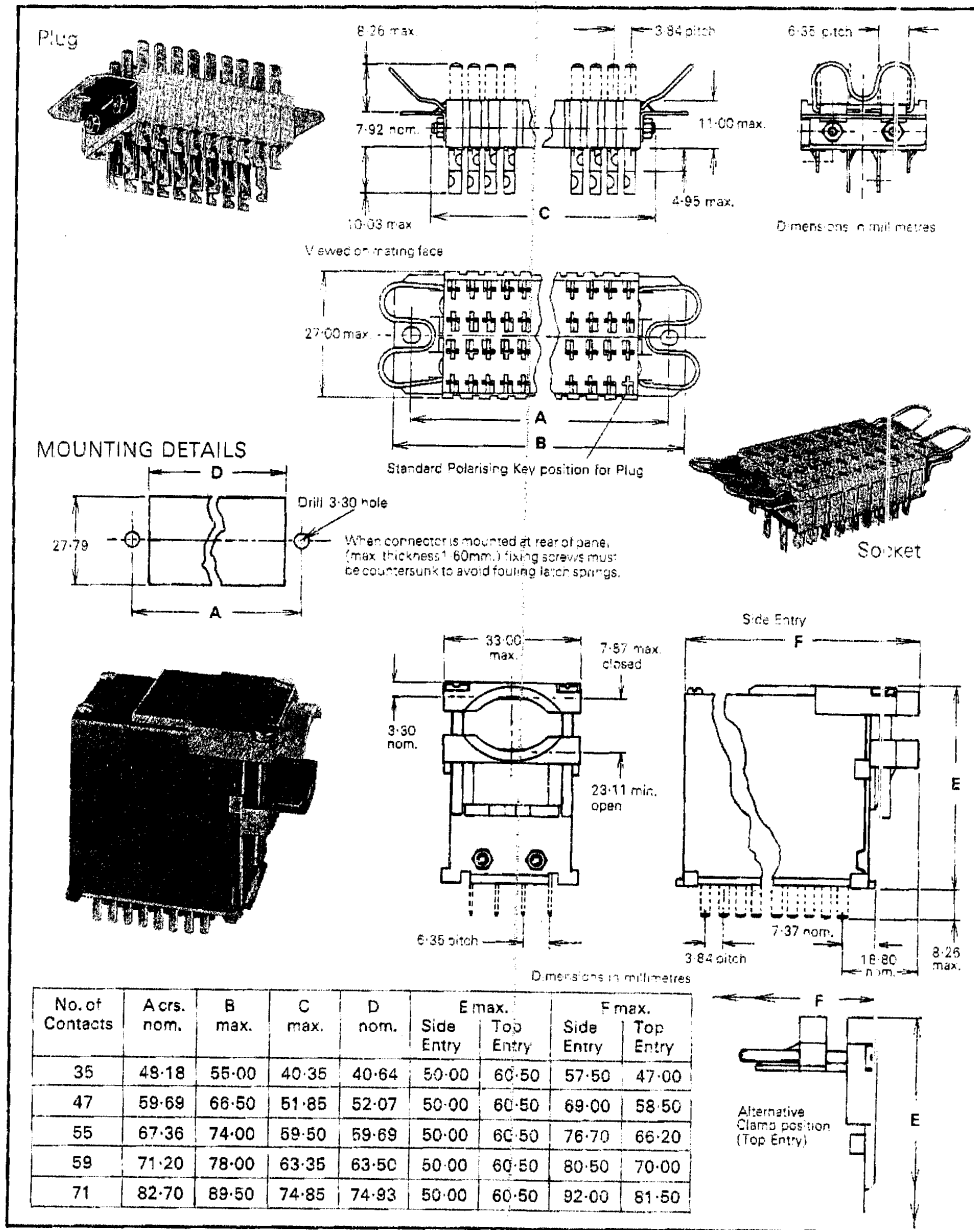
2 row types 7, 11, 15, 19, 23 and 31 contacts		with latch spring	without latch spring
Plugs	with mounting bracket	700/3450/XX*S	700/3450/XX*
	line with cover	—	700/3452/XX*
Sockets	with mounting bracket	700/3451/XX*S	700/3451/XX*
	line with cover	—	700/3453/XX*

Notes:—XX=No. of contacts, S=latching spring; if required.

Example 700 Series plug, line mounting with cover and 19 contacts is coded as —700,3452/19

Note: Plugs or sockets with covers cannot be fitted with latching, which must be fitted to non cover half.

700 Series Connectors and Covers 4 Row



ORDERING INFORMATION

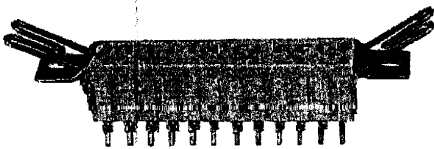
4 row types 35, 47, 55, 59 and 71 contacts		with latch spring	without latch spring
Plugs	with mounting bracket	700/3454/XX*S	700/3454/XX*
	line with cover	—	700/3456/XX*
Sockets	with mounting bracket	700/3455/XX*S	700/3455/XX*
	line with cover	—	700/3457/XX*

Notes: —XX—No. of contacts, S=latching springs if required.

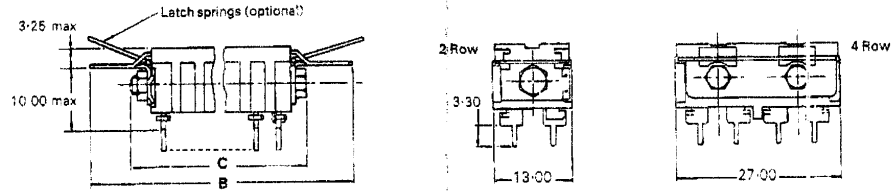
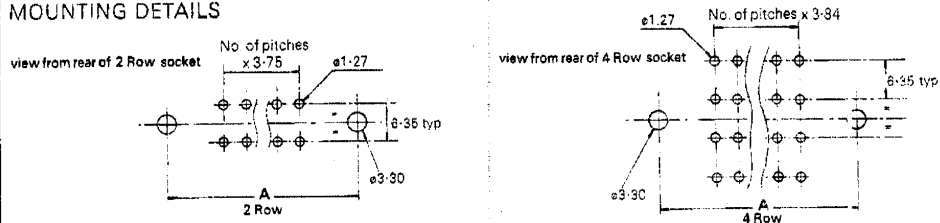
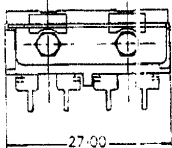
Example 700 Series plug, line mounting with cover and 55 contacts is coded as —700/3456/55

Note: Plugs or sockets with covers cannot be fitted with latching, which must be fitted to non cover half.

700 Series Flow solder-Straight pcb tail sockets



Dimensions in millimetres

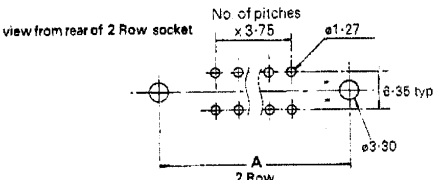
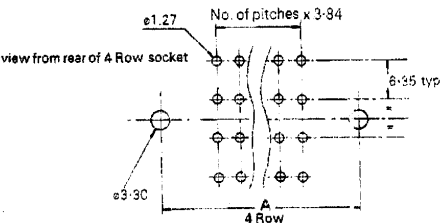
ORDERING INFORMATION

Note: Straight PCB tail 700 Series sockets mate with solder tail plugs.

With Latch Spring	Without Latch Spring	No. of rows	No. of contacts	A crs nom.	B max.	C max.
700/3451/7S-T	700/3451/7-T	2	7	28.60	35.50	20.75
700/3451/11S-T	700/3451/11-T	2	11	36.07	43.00	28.25
700/3451/15S-T	700/3451/15-T	2	15	43.54	51.00	35.70
700/3451/19S-T	700/3451/19-T	2	19	51.00	58.50	43.15
700/3451/23S-T	700/3451/23-T	2	23	58.47	66.00	50.65
700/3451/31S-T	700/3451/31-T	2	31	73.41	81.60	65.55
700/3455/35S-T	700/3455/35-T	4	35	48.18	55.00	40.35
700/3455/47S-T	700/3455/47-T	4	47	59.69	66.50	51.85
700/3455/55S-T	700/3455/55-T	4	55	67.36	74.00	59.50
700/3455/59S-T	700/3455/59-T	4	59	71.20	78.00	63.35
700/3455/71S-T	700/3455/71-T	4	71	82.70	89.50	74.85

Dimensions in millimetres

MOUNTING DETAILS

Details contained in this catalogue are correct at the time of going to press.
McMurdo reserves the right to modify the connectors without prior notification.

February 1978

Tel: +44 (0)1962 773004
Fax: +44 (0)1962 773104

<www.in2connect.uk.com>