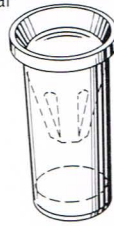


MICRO JACKS

Designers' Choice



- Precision engineered, "closed entry" contacts
- Space saving design for high density packaging
- Micro jacks are available for mating with .015 to .082 diameter pins and leads
- Beryllium Copper multi-spring contact maintains retention after multiple insertions
- Ideal for mounting transistors, resistors, diodes, IC's and similar miniature components
- Available for press-fit, swage or solder mounting
- Sizes for .032, .062, .093 and .125 thick PC boards
- Custom micro jacks manufactured to your specifications
- Other platings available upon request



SPECIFICATIONS

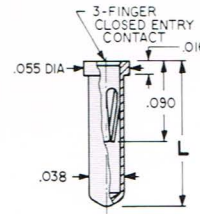
Body: Brass, ASTM-B16

Spring: Beryllium Copper (QQ-C-533)

Plating: Gold: .000010 per MIL-G-45204, Type II

Tin: .000200 to .000300 per MIL-T-10727, Type 1

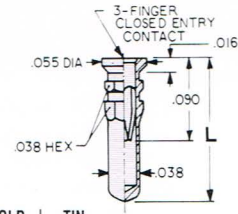
For .015 - .021 Pin - SOLDER MOUNT



GOLD PLATED CAT. NO.	TIN PLATED CAT. NO.	"L" Lgth
1411-1	1431-1	.140
1411-2	1431-2	.170

Mounting Hole .040 Dia.

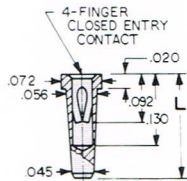
For .015 - .021 Pin - PRESS-FIT



GOLD PLATED CAT. NO.	TIN PLATED CAT. NO.	"L" Lgth
1412-1	1432-1	.140
1412-2	1432-2	.170
1412-3	1432-3	.282

Mounting Hole .040 Dia.

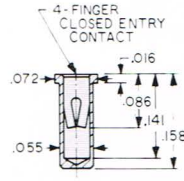
For .015 - .025 Pin - TAPER-FIT



GOLD PLATED CAT. NO.	TIN PLATED CAT. NO.	"L" Lgth
1415-1	1435-1	.160
1415-2	1435-2	.190

Mounting Hole .055 Dia.

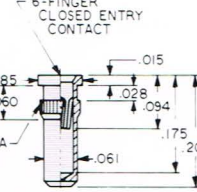
For .015 - .025 Pin - SOLDER MOUNT



CAT. NO. 1413 - Gold Plate
CAT. NO. 1433 - Tin Plate

Mounting Hole .057 Dia.

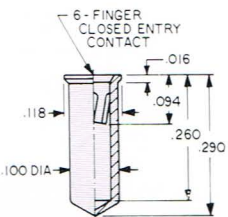
For .022 - .034 Pin - PRESS-FIT



CAT. NO. 1416 - Gold Plate
CAT. NO. 1436 - Tin Plate

Mounting Hole .067 Dia.

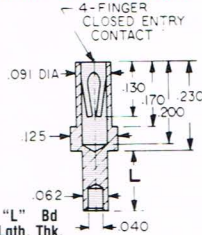
For .040 - .050 Pin - SOLDER MOUNT



CAT. NO. 1418 - Gold Plate
CAT. NO. 1438 - Tin Plate

Mounting Hole .102 Dia.

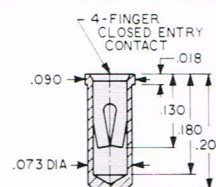
For .032 - .046 Pin - SWAGE MOUNT



GOLD PLATED CAT. NO.	TIN PLATED CAT. NO.	"L" Lgth	Bd Thk.
1419-1	1439-1	.062	.032
1419-2	1439-2	.094	.062
1419-3	1439-3	.125	.093
1419-4	1439-4	.156	.125

Mounting Hole .067 Dia.

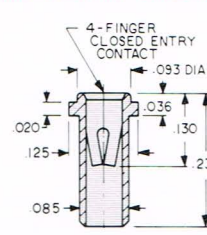
For .032 - .046 Pin - SOLDER MOUNT



CAT. NO. 1417 - Gold Plate
CAT. NO. 1437 - Tin Plate

Mounting Hole .076 Dia.

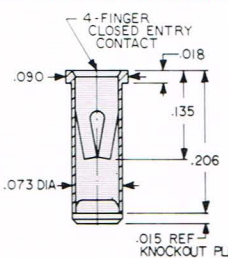
For .032 - .046 Pin - SOLDER MOUNT



CAT. NO. 1414 - Gold Plate
CAT. NO. 1434 - Tin Plate

Mounting Hole .089 Dia.

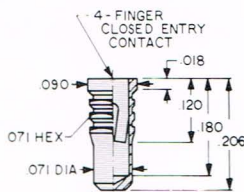
For .032 - .046 Pin - SOLDER MOUNT



CAT. NO. 1441 - Gold Plate
CAT. NO. 1444 - Tin Plate

Mounting Hole .076 Dia.

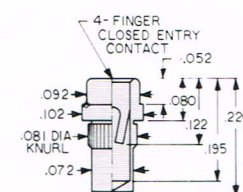
For .032 - .046 Pin - PRESS-FIT



CAT. NO. 1442 - Gold Plate
CAT. NO. 1445 - Tin Plate

Mounting Hole .076 Dia.

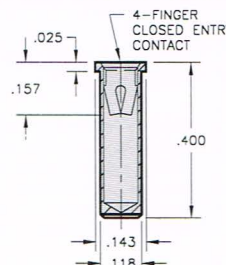
For .032 - .046 Pin - PRESS-FIT



CAT. NO. 1443 - Gold Plate
CAT. NO. 1446 - Tin Plate

Mounting Hole .078 Dia.

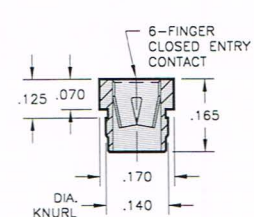
For .065 - .082 Pin - SOLDER MOUNT



CAT. NO. 1641A - Gold Plate
CAT. NO. 1641B - Tin Plate

Mounting Hole .120 Dia.

For .084 - .102 Pin - PRESS-FIT

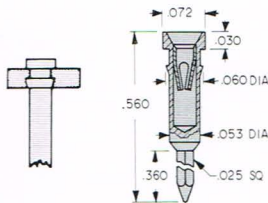


CAT. NO. 1640A - Gold Plate
CAT. NO. 1640B - Tin Plate

Mounting Hole .138 Dia.

IC SOCKET CONTACTS - For .015 - .025 Leads

Retains .016 to .022 Dia. Leads.
4 Finger Contacts.

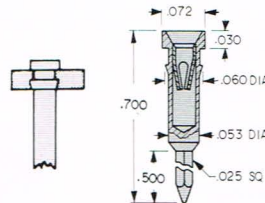


PRESS-FIT
Mounting Hole .055 Dia.

CAT. NO. 3501 - Gold Plate
CAT. NO. 3505 - Tin Plate

IC SOCKET CONTACTS - For .015 - .025 Leads

Retains .016 to .022 Dia. Leads.
4 Finger Contacts.

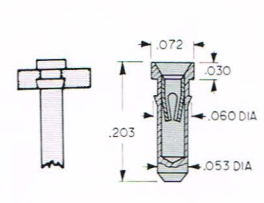


PRESS-FIT
Mounting Hole .055 Dia.

CAT. NO. 3502 - Gold Plate
CAT. NO. 3506 - Tin Plate

IC SOCKET CONTACTS - For .015 - .025 Leads

Retains .016 to .022 Dia. Leads.
4 Finger Contacts.

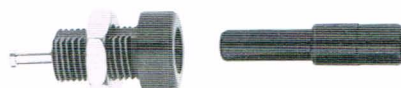


PRESS-FIT
Mounting Hole .055 Dia.

CAT. NO. 3503 - Gold Plate
CAT. NO. 3507 - Tin Plate

SHROUDED MALE PIN JACKS & SPRING CONTACT PLUGS

- Fully shrouded connection
- Color coded for easy identification
- Low contact resistance
- Precision spring contact for reliable connection
- Highly durable for multiple insertions
- Plugs available for 20 and 22 gauge wire (crimp or solder)
- Low insertion and withdrawal forces
- Field replaceable and autoclavable



SPECIFICATIONS

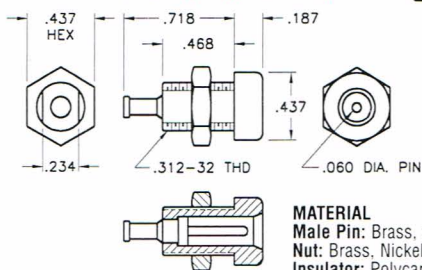
Current Rating: 7 Amps
Breakdown Voltage: 3500 VRMS
Contact Resistance: .010 Ω Maximum
Plug Shroud Diameter: .177
Operating Temperature: -66°F to +185°F
(-55°C to +85°C)

SHROUDED MALE PIN JACK (Fully Insulated)

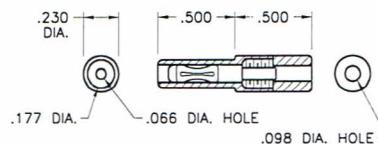
MATES WITH

SHROUDED SPRING CONTACT PLUG

CAT. NO.	COLOR
9000	WHITE
9001	RED
9002	BLACK
9003	GREEN
9004	YELLOW
9005	BLUE



MATERIAL
Male Pin: Brass, Gold Plate
Nut: Brass, Nickel Plate
Insulator: Polycarbonate



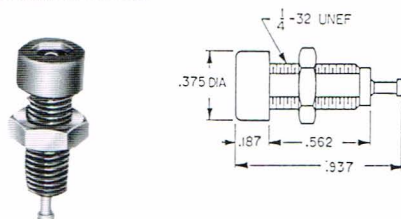
MATERIAL
Spring Contact: Beryllium Copper, Gold Plate
Body: Brass, Gold Plate
Insulator: Polycarbonate

CAT. NO.	COLOR	GAUGE
9006	WHITE	20 AWG WIRE
9007	RED	
9008	BLACK	
9009	GREEN	
9010	YELLOW	
9011	BLUE	22 AWG WIRE
9012	WHITE	
9013	RED	
9014	BLACK	
9015	GREEN	
9016	YELLOW	
9017	BLUE	

FULLY INSULATED DELUXE TIP JACK

ACCEPTS .080" TIP (WITH CLOSED ENTRY CONTACT)

Fully molded body with recessed closed entry design. Assures maximum retention with .010 Ω maximum contact resistance. Prevents accidental insertion of larger diameter probes. Current rating: 10 Amps. Breakdown voltage 5700 VRMS. Capacitance to metal panel 2.0 pF nominal. Supplied with nut.



SELECTION OF COLORS

CAT. NO.	COLOR
6030	WHITE
6031	RED
6032	BLACK
6033	GREEN
6034	YELLOW
6035	BLUE

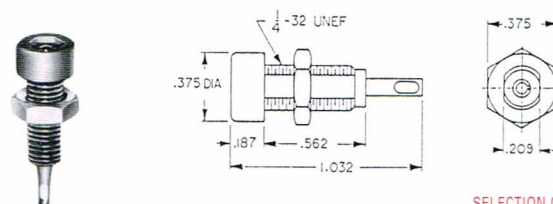
MATERIAL

Body: Molded Nylon ASTM D4066
Contact: Beryllium Copper, Silver Plate
Terminal: Brass, Tin Plate

FULLY-INSULATED STANDARD TIP JACK

ACCEPTS .080" TIP

Economical tip jacks with molded Nylon body. Low contact resistance. Formed phosphor bronze contact with solder hole for ease in attaching wire. Current rating 10 Amps. Breakdown voltage 5700 VRMS. Capacitance to metal panel 3.8 pF. Supplied with nut.



SELECTION OF COLORS

CAT. NO.	COLOR
6018	WHITE
6019	RED
6020	BLACK
6021	GREEN
6022	YELLOW
6023	BLUE

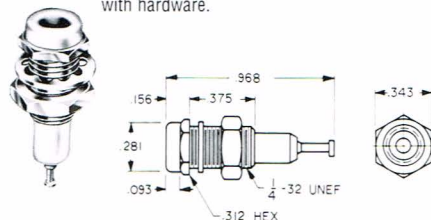
MATERIAL

Body: Molded Nylon ASTM D4066
Contact: Phosphor Bronze, Tin Plate

METAL-CLAD TIP JACK (MIL)

ACCEPTS .080" TIP (WITH CLOSED ENTRY CONTACT)

High quality tip jack for high reliability industrial applications. Ideal for use where required to withstand severe environmental conditions, temperature, vibration and salt spray. Recessed closed entry contact. Current rating: 5 Amps. Breakdown voltage: 5700 VRMS. Made to MS-16108 Rev. F of MIL-STD-242A and MIL-C39024/10. Capacitance to metal panel 2.0 pF. Supplied complete with hardware.



SELECTION OF COLORS

CAT. NO.	COLOR
6012	WHITE
6013	RED
6014	BLACK
6015	GREEN
6016	YELLOW
6017	BLUE

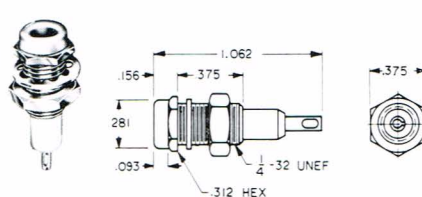
MATERIAL

Body: Molded Nylon
ASTM D4066
Shell & Nut: Brass QQ-B-626.
Nickel Plate QQ-N-290
Contact: Beryllium Copper
PER QQ-C-533. Gold Plate
MIL-G-45204

METAL-CLAD TIP JACK (STD)

ACCEPTS .080" TIP

Molded Nylon body with metal jacket. Contact is formed from phosphor bronze with solder hole for ease in attaching wire. Designed for positive contact, easy insertion and withdrawal. Current rating: 10 Amps. Breakdown voltage: 5700VRMS. Capacitance to metal panel 3.8 pF. Supplied with nut.



SELECTION OF COLORS

CAT. NO.	COLOR
6024	WHITE
6025	RED
6026	BLACK
6027	GREEN
6028	YELLOW
6029	BLUE

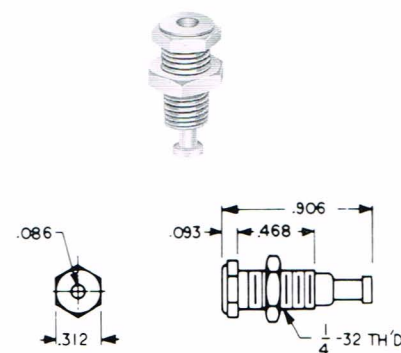
MATERIAL

Body: Molded Nylon
ASTM D4066
Shell: Brass, Nickel Plate
Contact: Phosphor, Bronze
Silver Plate

UNINSULATED TIP JACK

ACCEPTS .080" TIP

Quality, precision machined tip jack made of brass. Ideal for use on metal panels where grounding is required. Fits panels up to 3/8" thk. Complete with hex nut.



MATERIAL

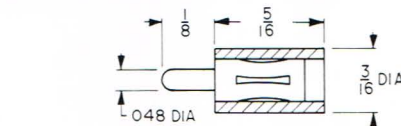
Body: Brass, Nickel Plate
Contact: Bronze
Rating: 15 Amps.

CAT. NO. 6097

VERTICAL PC TEST JACK

ACCEPTS .080" TIP

This low profile vertical jack allows dense packaging where space is limited. Mounts into a .052" diameter hole. Provides easy access and positive electrical contact. The contact is recessed to prevent accidental shorting. Capacitance between two adjacent jacks less than 1.0 pF at 1 MHz. Operating voltage is 1500 Volts RMS. Current rating 5 Amps max.



ACTUAL SIZE

MATERIAL

Body: Nylon per ASTM D4066

Contact: Beryllium Copper, Silver Plate

SELECTION OF COLORS

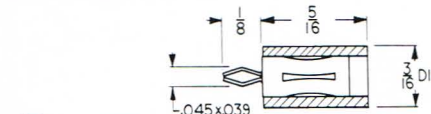
CAT. NO.	COLOR
6036	WHITE
6037	RED
6038	BLACK
6039	YELLOW
6040	GREEN
6041	BLUE

SNAP-IN VERTICAL PC TEST JACK

ACCEPTS .080" TIP

Low cost, compact and dependable snap-in vertical test jack features a unique spring shank which retains the jack throughout wave soldering procedure. Ideal for use on circuit boards of audio, digital and R.F. circuitry. Contact recessed to prevent accidental shorting. Current rating: 5 Amps. Operating voltage 1500 Volts RMS. Capacitance between two adjacent jacks less than 1.0 pF at 1 MHz.

MOUNTING: Snap-fits into .052 hole



ACTUAL SIZE

MATERIAL

Body: Nylon per ASTM D4066

Contact: Beryllium Copper, Silver Plate

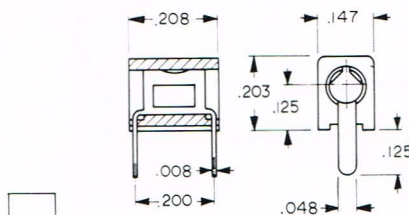
SELECTION OF COLORS

CAT. NO.	COLOR
6042	WHITE
6043	RED
6044	BLACK
6045	YELLOW
6046	GREEN
6047	BLUE

MINIATURE HORIZONTAL PC TEST JACK

ACCEPTS .080" TIP

Space saver test jack designed for use where space is a limiting factor. Half the size of standard jacks. Accepts .080" tip plug in either end. Mounts on .200" centers in .052" holes. Can be spaced side by side on .160" centers minimum. Two common terminals. Current rating: 5 Amps. Breakdown voltage: 2100 VRMS, Capacitance 1.0 pF maximum.



ACTUAL SIZE

MATERIAL

Body: Nylon per ASTM D4066

Contact: Beryllium Copper Silver Plate

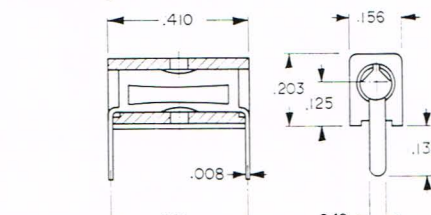
SELECTION OF COLORS

CAT. NO.	COLOR
6048	WHITE
6049	RED
6050	BLACK
6051	YELLOW
6052	GREEN
6053	BLUE

UNIVERSAL HORIZONTAL PC TEST JACK

ACCEPTS .080" TIP

This universal design accepts .080" tip plug in either end, or from top or bottom. Top contact will also accept hook-type oscilloscope probe. Two common terminals. Current rating: 5 Amps. Breakdown voltage: 2100 VRMS Capacitance 1.0 pF maximum. Mounts on .400" centers in .052" holes. Side by side mounting on .160" centers.



ACTUAL SIZE

MATERIAL

Body: Nylon per ASTM D4066

Contact: Beryllium Copper Silver Plate

SELECTION OF COLORS

CAT. NO.	COLOR
6054	WHITE
6055	RED
6056	BLACK
6057	YELLOW
6058	GREEN
6059	BLUE

LOW PROFILE HORIZONTAL PC TEST JACK

ACCEPTS .080" TIP

This low profile double-entry design is recognized for its dependability, and allows dense packaging on .160" centers. Side by side mounting. Closed entry design for use with .074 to .084 dia. tips. Reliability is designed into this rugged low cost jack. Mounts on .400" centers in .052" holes. Current rating: 5 Amps. Breakdown voltage 2100 VRMS. Contact resistance .010Ω maximum.

MATERIAL

Body: Nylon per ASTM D4066

Contact: Beryllium Copper, Silver or Gold Plate

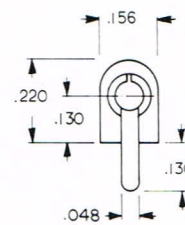
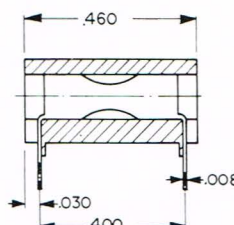
Choice of Gold or Silver Plate Contacts

WITH GOLD PLATING
SELECTION OF COLORS

CAT. NO.	COLOR
6060	WHITE
6061	RED
6062	BLACK
6063	YELLOW
6064	GREEN
6065	BLUE

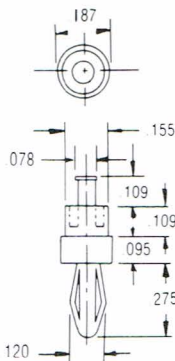
WITH SILVER PLATING
SELECTION OF COLORS

CAT. NO.	COLOR
6066	WHITE
6067	RED
6068	BLACK
6069	YELLOW
6070	GREEN
6071	BLUE



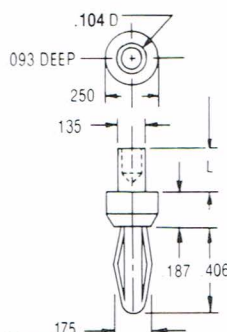
ACTUAL SIZE

MINIATURE RIVET



MATERIAL
Spring: Beryllium Copper
Body: Brass, Bright Tin Plate
CAT. NO. 452

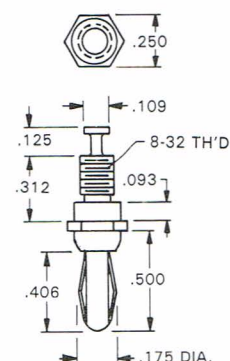
STANDARD RIVET



MATERIAL
Spring: Beryllium Copper
Body: Brass, Nickel Plate

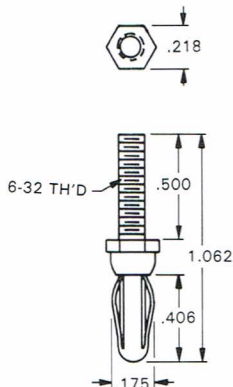
CAT. NO.	L
552-3	.187
552-4	.218

EXTERNAL THREAD



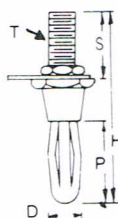
MATERIAL
Spring: Beryllium Copper
Body: Brass, Nickel Plate
CAT. NO. 652

EXTERNAL THREAD



MATERIAL
Spring: Beryllium Copper
Body: Brass, Nickel Plate
CAT. NO. 653

EXTERNAL THREAD

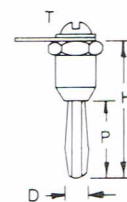


Supplied with lug and nut
Unassembled

MATERIAL
Spring: Nickel Silver
Body: Brass, Nickel Plate

CAT. NO.	D	P	H	S	T
6074-1	.175	.531	1 1/8	.375	6-32
6074-2	.175	.531	1 1/2	.750	6-32
6075	.300	.750	1 3/4	.625	1/4-28

INTERNAL THREAD



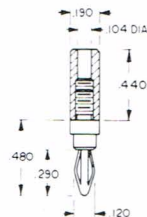
Supplied with screw and lug
Unassembled

MATERIAL
Spring: Nickel Silver
Body: Brass, Nickel Plate

CAT. NO.	D	P	H	T
6072	.175	.531	.937	6-32
6073	.300	.750	1.12	10-32

MINI INSULATED

SOLDER CONNECTION

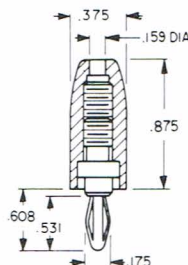


MATERIAL
Spring: Beryllium Copper, Nickel Plate
Body: Brass, Nickel Plate
Handle: Nylon

CAT. NO.	COLOR
6076	RED
6077	BLACK

STANDARD INSULATED

SOLDERLESS CONNECTION

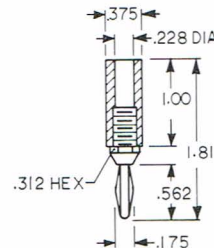


MATERIAL
Spring: Nickel Silver
Body: Brass, Nickel Plate
Handle: Nylon

CAT. NO.	COLOR
6078	RED
6079	BLACK

STANDARD INSULATED

SOLDERLESS CONNECTION

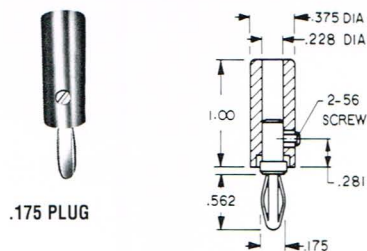


MATERIAL
Spring: Nickel Silver
Body: Brass, Nickel Plate
Handle: Nylon

CAT. NO.	COLOR
6082	RED
6083	BLACK

STD INSULATED PLUG

SOLDERLESS WITH SET SCREW



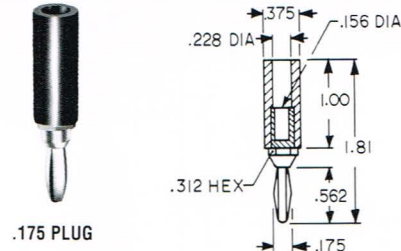
MATERIAL

Spring: Nickel Silver
Body: Brass, Nickel Plate
Handle: Nylon

CAT. NO.	COLOR
6084	RED
6085	BLACK

STD INSULATED PLUG

SOLDER CONNECTION



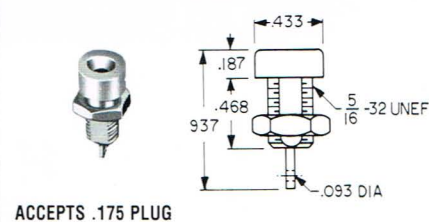
MATERIAL

Spring: Nickel Silver
Body: Brass, Nickel Plate
Handle: Nylon

CAT. NO.	COLOR
6080	RED
6081	BLACK

STD INSULATED JACK

FULLY INSULATED



ACCEPTS .175 PLUG

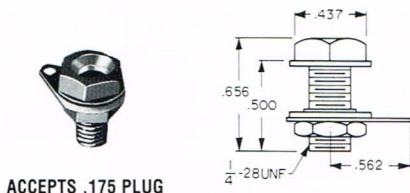
MATERIAL

Body: Nylon
Contact: Brass, Tin Plate

CAT. NO.	COLOR
6091	RED
6092	BLACK

STD INSULATED JACK

SOLDER CONNECTION



ACCEPTS .175 PLUG

Supplied with lug and nut
Unassembled

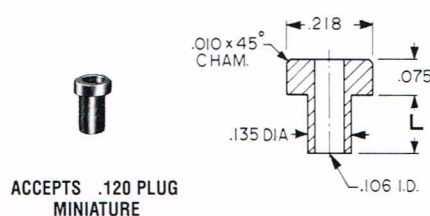
MATERIAL

Body: Brass, Nickel Plate
Terminal: Copper, Tinned
Hex Head: Nylon

CAT. NO.	COLOR
6093	RED
6094	BLACK

NON-INSULATED JACKS (STAKING)

MINIATURE



ACCEPTS .120 PLUG
MINIATURE

MATERIAL: Brass, Tin Plate

CAT. NO.	L
476-2	.125
476-3	.165
476-4	.187

STANDARD



ACCEPTS .175 PLUG

MATERIAL: Brass, Nickel Plate

CAT. NO.	L
575-4	.218
575-6	.265
575-8	.350

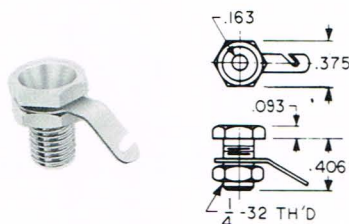
STANDARD NON-INSULATED JACKS

RECESSED HEAD

Fits panel up to 5/16" thick

Will accept .175 plug. Complete with hex nut and lug. Unassembled.

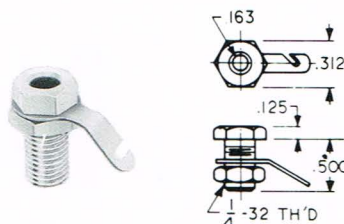
SPECIFICATIONS: Body: Brass, Nickel Plate Rating: 15 Amps
Terminal: Brass, Tin Plate



CAT. NO. 6095

STANDARD HEAD

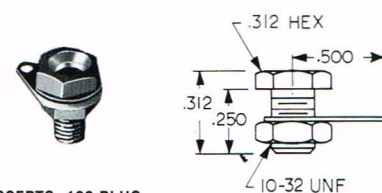
Fits panel up to 3/8" thick



CAT. NO. 6096

MINIATURE JACK

NON-INSULATED



ACCEPTS .120 PLUG

Supplied with lug and nut
Unassembled

MATERIAL

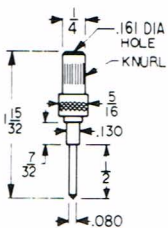
Body: Brass, Nickel Plate
Terminal: Copper, Tinned

CAT. NO. 6090

SPECIFICATIONS: Tips: Brass, Nickel Plate
Handles: Nylon 6/6, Available in Red or Black
Rating: 10 Amps AC for 10°C temperature rise, continuous duty

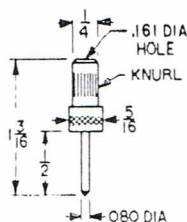
FORCE FIT SOLDERLESS TIPS

SENIOR



CAT. NO. 1690

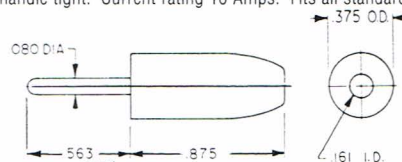
JUNIOR



CAT. NO. 1680

SOLDERLESS - .080 DIA. TIP PLUGS

Fully insulated molded nylon sleeve. Maximum reliability with minimum contact resistance. Recessed metal head eliminates possibility of shock or grounding. Designed for solderless connection of up to 16 gauge stranded wire which fits through handle and tip and is secured by screwing handle tight. Current rating 10 Amps. Fits all standard tip jacks.

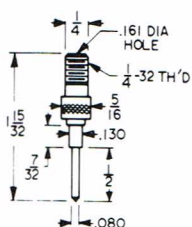


SELECTION OF COLORS

CAT. NO.	COLOR	CAT. NO.	COLOR
6000	WHITE	6003	GREEN
6001	RED	6004	YELLOW
6002	BLACK	6005	BLUE

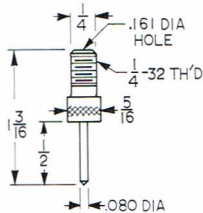
THREADED SOLDERLESS TIP

SENIOR



CAT. NO. 1691

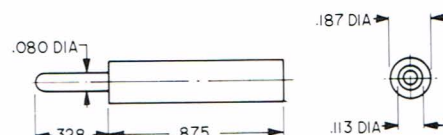
JUNIOR



CAT. NO. 1681

MINIATURE - .080 DIA. TIP PLUGS

Designed for miniaturization where space is critical. Solder lead connection. Maximum reliability with minimum contact resistance. Base of tip is recessed to eliminate shock or grounding. Fits horizontal tip jacks. Current rating: 10 Amps.

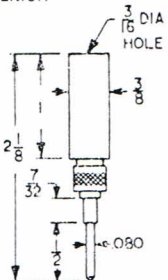


SELECTION OF COLORS

CAT. NO.	COLOR	CAT. NO.	COLOR
6006	WHITE	6009	GREEN
6007	RED	6010	YELLOW
6008	BLACK	6011	BLUE

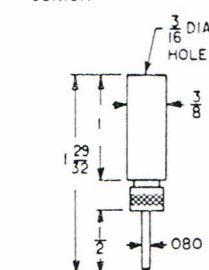
INSULATED SOLDERLESS TIP

SENIOR



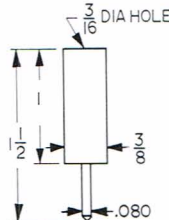
CAT. NO. 1660 - RED
CAT. NO. 1661 - BLACK

JUNIOR

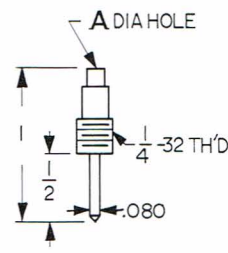


CAT. NO. 1670 - RED
CAT. NO. 1671 - BLACK

STREAMLINE TIPS

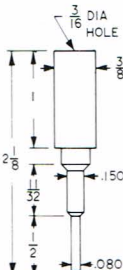


CAT. NO. 1615 - RED
CAT. NO. 1616 - BLACK



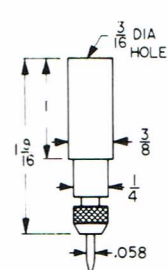
CAT. NO.	A
3022-12	.120
3022-20	.093

HEAVY DUTY



CAT. NO. 3017 - RED
CAT. NO. 3018 - BLACK
CAT. NO. 3019 - TIP ONLY

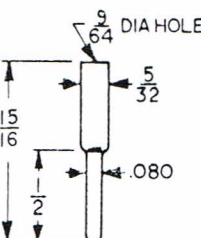
NEEDLE TIPS



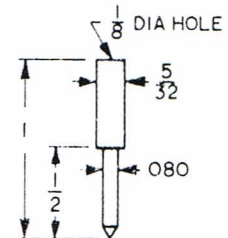
CAT. NO. 3015 - RED
CAT. NO. 3016 - BLACK
CAT. NO. 3014 - TIP ONLY

STANDARD PHONE TIPS

Ideal replacement tip for headset, speaker, or extension cord. Cat. No. 1601 Tip accommodates heavier wire.



CAT. NO. 1600



CAT. NO. 1601