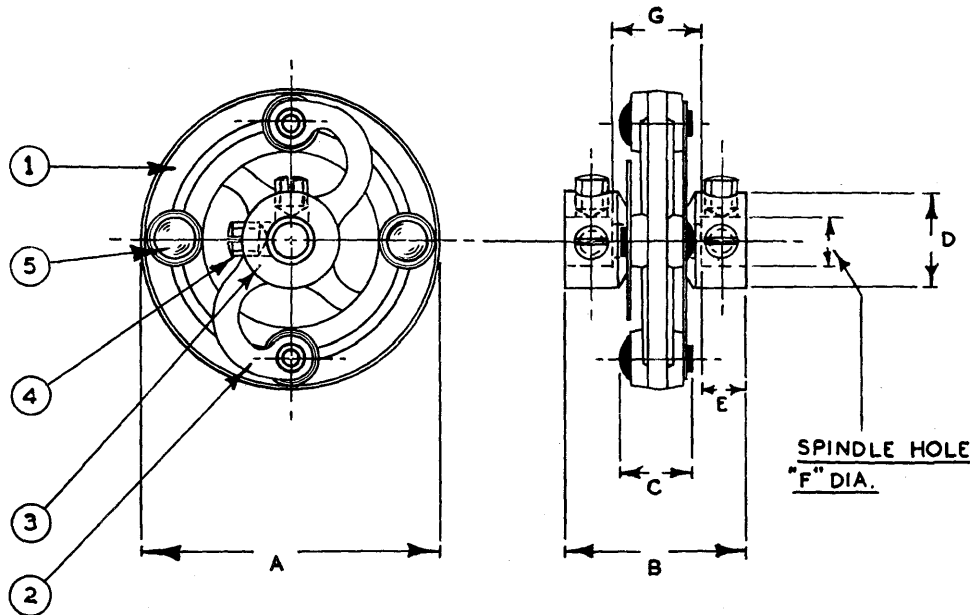


EDDYSTONE

FLEXIBLE COUPLERS. TECHNICAL DETAILS.



ITEM No.	DESCRIPTION.	MATERIAL.	FINISH.
1	MOULDING	WHITE BEETLE *	NATURAL
2	ARMS.	PH. BRONZE.	NICKEL PLATED.
3	HUBS.	BRASS.	" "
4	GRUB SCREWS.	STEEL	ZINC PLATE & PASSIVATE.
5	RIVETS.	COPPER.	NICKEL PLATED.

* CAT. No. 893. MOULDING IS MADE OF BAKELITE GRADE X17163. (NYLON LOADED.)

CAT. No.	DIMENSIONS. (INS.)							PROOF VOLTAGE.	WEIGHT
	A	B	C	D	E	F	G		
50	$1\frac{17}{32}$	$\frac{15}{16}$	$\frac{11}{32}$	$\frac{1}{2}$ DIA.	$\frac{7}{32}$.2505. .252.	$\frac{1}{2}$	6,750	.75 OZS
893	$1\frac{3}{64}$	$\frac{27}{32}$	$\frac{15}{64}$	$\frac{1}{2}$ DIA.	$\frac{7}{32}$		$\frac{13}{32}$	3,750	.56 OZS
529	$1\frac{3}{64}$	$\frac{27}{32}$	$\frac{15}{64}$	$\frac{3}{8}$ DIA.	$\frac{7}{32}$		$\frac{13}{32}$	3,750	.33 OZS
550	$2\frac{1}{32}$	$\frac{19}{32}$	$\frac{1}{4}$	$\frac{1}{4}$ DIA.	$\frac{5}{32}$		$\frac{9}{32}$	2,500	.16 OZS

NOTE :- PROOF VOLTAGE IS R.M.S. AT 50 CYCLES FOR ONE MINUTE

