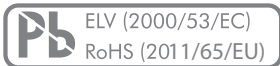


Product description

MAIN FEATURES

- > Precise quality knobs
- > Secure collet mounting
- > Wide variety
- > Lots of accessories
- > Customized colors on request



PRODUCT VARIETY

- Knob size 9 to 45 mm
- Shaft diameter: 2 mm to 1/4"
- Glossy or matt surface
- Knob color black or gray
- Various cap colors
- With or without line
- Various accessories

POSSIBLE CUSTOMIZATIONS

- Color
- Shaft diameter

OVERVIEW

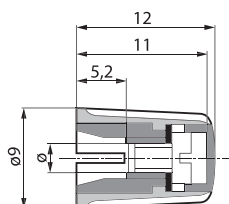
SHAFT DIAMETER Ø	KNOBS SIZE						
	Ø 9 mm	Ø 10 mm	Ø 14.5 mm	Ø 21 mm	Ø 28 mm	Ø 36 mm	Ø 45 mm
2 mm	x	x					
3 mm	x	x	x				
4 mm		x	x	x			
6 mm			x	x	x	x	x
1/8"	x	x	x				
1/4"			x	x	x	x	x
Wing knob		x	x	x	x		
Crank knob							x
SEE	PAGE <?>	PAGE <?>	PAGE <?>	PAGE <?>	PAGE <?>	PAGE <?>	PAGE <?>

Knob size vs. shaft diameter, wing and crank style



Dimensions and ordering information

SHAPE, DIMENSION AND PART NUMBER

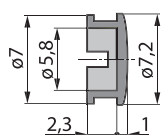
KNOB SIZE: Ø 9 MM





KNOB

TYPE	SHAFT DIAMETER	GRAY		BLACK	
		MATT	GLOSSY	MATT	GLOSSY
Without line 	2	020-1015	020-1010	020-1025	020-1020
	3	020-1115	020-1110	020-1125	020-1120
	1/8"	020-1215	020-1210	020-1225	020-1220
With line 	2	021-1015	021-1010	021-1025	021-1020
	3	021-1115	021-1110	021-1125	021-1120
	1/8"	021-1215	021-1210	021-1225	021-1220

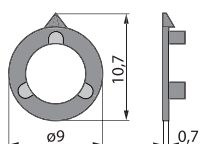
Packaging size: 100 pieces



CAP

TYPE	SURFACE	GRAY	BLACK	RED	BLUE	YELLOW	GREEN
Without line 	Matt	040-1015	040-1025	040-1035	040-1045	040-1055	040-1065
	Glossy	040-1010	040-1020	040-1030	040-1040	040-1050	040-1060
With line 	Matt	040-1615	040-1625	040-1635	040-1645	040-1655	040-1665
	Glossy	040-1610	040-1620	040-1630	040-1640	040-1650	040-1660

Packaging size: 100 pieces



POINTER

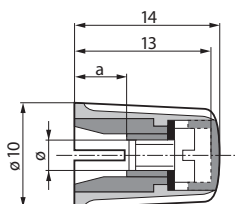
SURFACE	GRAY	BLACK	RED	BLUE	YELLOW	GREEN
Matt	041-1015	041-1025	041-1035	041-1045	041-1055	041-1065
Glossy	041-1010	041-1020	041-1030	041-1040	041-1050	041-1060

Packaging size: 100 pieces



Dimensions and ordering information

SHAPE, DIMENSION AND PART NUMBER

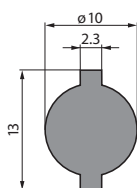
KNOB SIZE: Ø 10 MM




KNOB

TYPE	α	SHAFT DIAMETER	GRAY		BLACK	
			MATT	GLOSSY	MATT	GLOSSY
Without line 	4.5	2	020-2015	020-2010	020-2025	020-2020
	5.2	3	020-2115	020-2110	020-2125	020-2120
	5.2	1/8"	020-2215	020-2210	020-2225	020-2220
	5.2	4	020-2315	020-2310	020-2325	020-2320
With line 	4.5	2	021-2015	021-2010	021-2025	021-2020
	5.2	3	021-2115	021-2110	021-2125	021-2120
	5.2	1/8"	021-2215	021-2210	021-2225	021-2220
	5.2	4	021-2315	021-2310	021-2325	021-2320

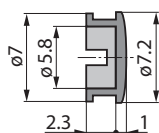
Packaging size: 100 pieces





WING KNOB

TYPE	α	SHAFT DIAMETER	GRAY		BLACK	
			MATT	GLOSSY	MATT	GLOSSY
With line 	4.5	2	023-2015	023-2010	023-2025	023-2020
	5.2	3	023-2115	023-2110	023-2125	023-2120
	5.2	1/8"	023-2215	023-2210	023-2225	023-2220
	5.2	4	023-2315	023-2310	023-2325	023-2320

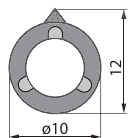
Packaging size: 100 pieces



CAP

TYPE	SURFACE	GRAY	BLACK	RED	BLUE	YELLOW	GREEN
Without line 	Matt	040-1015	040-1025	040-1035	040-1045	040-1055	040-1065
	Glossy	040-1010	040-1020	040-1030	040-1040	040-1050	040-1060
With line 	Matt	040-1615	040-1625	040-1635	040-1645	040-1655	040-1665
	Glossy	040-1610	040-1620	040-1630	040-1640	040-1650	040-1660

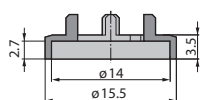
Packaging size: 100 pieces





POINTER

SURFACE	GRAY	BLACK	RED	BLUE	YELLOW	GREEN
Matt	041-2015	041-2025	041-2035	041-2045	041-2055	041-2065
Glossy	041-2010	041-2020	041-2030	041-2040	041-2050	041-2060

Packaging size: 100 pieces



NUT COVER

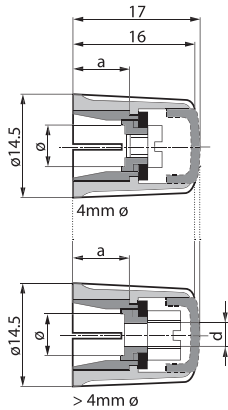
TYPE	SURFACE	GRAY	BLACK
Without line 	Matt	044-2015	044-2025
	Glossy	044-2010	044-2020
With line 	Matt	044-2115	044-2125
	Glossy	044-2110	044-2120

Packaging size: 100 pieces



Dimensions and ordering information

SHAPE, DIMENSION AND PART NUMBER

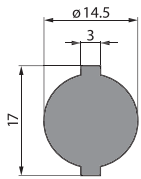
KNOB SIZE: Ø 14.5 MM




KNOB

TYPE	a	d	SHAFT DIAMETER	GRAY		BLACK	
				MATT	GLOSSY	MATT	GLOSSY
Without line 	5.2	-	3	020-3115	020-3110	020-3125	020-3120
	5.2	-	1/8"	020-3215	020-3210	020-3225	020-3220
	5.2	-	4	020-3315	020-3310	020-3325	020-3320
	7.0	3.2	6	020-3415	020-3410	020-3425	020-3420
	7.0	3.2	1/4"	020-3515	020-3510	020-3525	020-3520
With line 	5.2	-	3	021-3115	021-3110	021-3125	021-3120
	5.2	-	1/8"	021-3215	021-3210	021-3225	021-3220
	5.2	-	4	021-3315	021-3310	021-3325	021-3320
	7.0	3.2	6	021-3415	021-3410	021-3425	021-3420
	7.0	3.2	1/4"	021-3515	021-3510	021-3525	021-3520

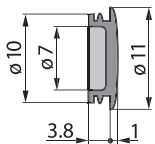
Packaging size: 100 pieces





WING KNOB

TYPE	a	d	SHAFT DIAMETER	GRAY		BLACK	
				MATT	GLOSSY	MATT	GLOSSY
With line 	5.2	-	3	023-3115	023-3110	023-3125	023-3120
	5.2	-	1/8"	023-3215	023-3210	023-3225	023-3220
	5.2	-	4	023-3315	023-3310	023-3325	023-3320
	7.0	3.2	6	023-3415	023-3410	023-3425	023-3420
	7.0	3.2	1/4"	023-3515	023-3510	023-3525	023-3520

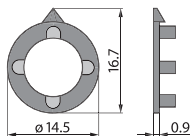
Packaging size: 100 pieces



CAP

TYPE	SURFACE	GRAY	BLACK	RED	BLUE	YELLOW	GREEN
Without line 	Matt	040-3015	040-3025	040-3035	040-3045	040-3055	040-3065
	Glossy	040-3010	040-3020	040-3030	040-3040	040-3050	040-3060
With line 	Matt	040-3615	040-3625	040-3635	040-3645	040-3655	040-3665
	Glossy	040-3610	040-3620	040-3630	040-3640	040-3650	040-3660

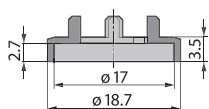
Packaging size: 100 pieces






POINTER

SURFACE	GRAY	BLACK	RED	BLUE	YELLOW	GREEN
Matt	041-3015	041-3025	041-3035	041-3045	041-3055	041-3065
Glossy	041-3010	041-3020	041-3030	041-3040	041-3050	041-3060

Packaging size: 100 pieces



NUT COVER

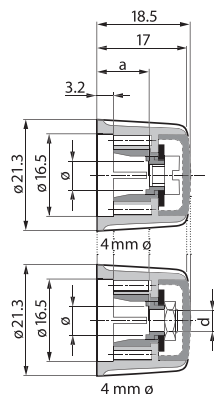
TYPE	SURFACE	GRAY	BLACK	ROT
Without line 	Matt	044-3015	044-3025	044-3035
	Glossy	044-3010	044-3020	044-3030
With line 	Matt	044-3115	044-3125	044-3135
	Glossy	044-3110	044-3120	044-3130
Only for wing knob 	Matt	044-3215	044-3225	044-3235
	Glossy	044-3210	044-3220	044-3230

Packaging size: 100 pieces



Dimensions and ordering information

SHAPE, DIMENSION AND PART NUMBER

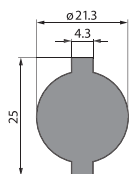
KNOB SIZE: Ø 21 MM




KNOB

TYPE	a	d	SHAFT DIAMETER	GRAY		BLACK	
				MATT	GLOSSY	MATT	GLOSSY
Without line	8.3	-	4	020-4315	020-4310	020-4325	020-4320
	10	4.05	6	020-4415	020-4410	020-4425	020-4420
	10	3.2	1/4"	020-4515	020-4510	020-4525	020-4520
With line	8.3	-	4	021-4315	021-4310	021-4325	021-4320
	10	4.05	6	021-4415	021-4410	021-4425	021-4420
	10	3.2	1/4"	021-4515	021-4510	021-4525	021-4520

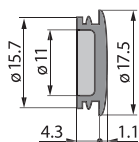
Packaging size: 100 pieces



WING KNOB

TYPE	a	d	SHAFT DIAMETER	GRAY		BLACK	
				MATT	GLOSSY	MATT	GLOSSY
With line	8.3	-	4	023-4315	023-4310	023-4325	023-4320
	10	4.05	6	023-4415	023-4410	023-4425	023-4420
	10	3.2	1/4"	023-4515	023-4510	023-4525	023-4520

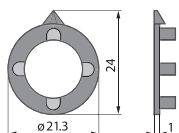
Packaging size: 100 pieces



CAP

TYPE	SURFACE	GRAY	BLACK	RED	BLUE	YELLOW	GREEN
Without line	Matt	040-4015	040-4025	040-4035	040-4045	040-4055	040-4065
	Glossy	040-4010	040-4020	040-4030	040-4040	040-4050	040-4060
With line	Matt	040-4615	040-4625	040-4635	040-4645	040-4655	040-4665
	Glossy	040-4610	040-4620	040-4630	040-4640	040-4650	040-4660

Packaging size: 100 pieces



POINTER

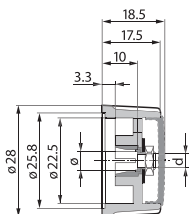
SURFACE	GRAY	BLACK	RED	BLUE	YELLOW	GREEN
Matt	041-4015	041-4025	041-4035	041-4045	041-4055	041-4065
Glossy	041-4010	041-4020	041-4030	041-4040	041-4050	041-4060

Packaging size: 100 pieces



Dimensions and ordering information

SHAPE, DIMENSION AND PART NUMBER

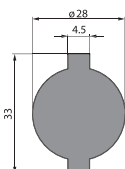
KNOB SIZE: Ø 28 MM




KNOB

TYPE	d	SHAFT DIAMETER	GRAY		BLACK	
			MATT	GLOSSY	MATT	GLOSSY
Without line 	4.05	6	020-5415	020-5410	020-5425	020-5420
	3.2	1/4"	020-5515	020-5510	020-5525	020-5520
With line 	4.05	6	021-5415	021-5410	021-5425	021-5420
	3.2	1/4"	021-5515	021-5510	021-5525	021-5520

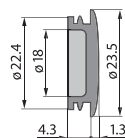
Packaging size: 100 pieces





WING KNOB

TYPE	d	SHAFT DIAMETER	GRAY		BLACK	
			MATT	GLOSSY	MATT	GLOSSY
With line 	4.05	6	023-5415	023-5410	023-5425	023-5420
	3.2	1/4"	023-5515	023-5510	023-5525	023-5520

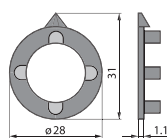
Packaging size: 100 pieces



CAP

TYPE	SURFACE	GRAY	BLACK	RED	BLUE	YELLOW	GREEN
Without line 	Matt	040-5015	040-5025	040-5035	040-5045	040-5055	040-5065
	Glossy	040-5010	040-5020	040-5030	040-5040	040-5050	040-5060
With line 	Matt	040-5615	040-5625	040-5635	040-5645	040-5655	040-5665
	Glossy	040-5610	040-5620	040-5630	040-5640	040-5650	040-5660

Packaging size: 100 pieces



POINTER

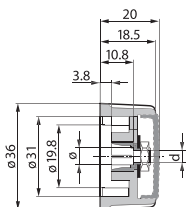
SURFACE	GRAY	BLACK	RED	BLUE	YELLOW	GREEN
Matt	041-5015	041-5025	041-5035	041-5045	041-5055	041-5065
Glossy	041-5010	041-5020	041-5030	041-5040	041-5050	041-5060

Packaging size: 100 pieces



Dimensions and ordering information

SHAPE, DIMENSION AND PART NUMBER

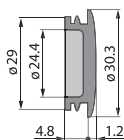
KNOB SIZE: Ø 36 MM





KNOB

TYPE	d	SHAFT DIAMETER	GRAY		BLACK	
			MATT	GLOSSY	MATT	GLOSSY
Without line 	4.05	6	020-6415	020-6410	020-6425	020-6420
	3.2	¼"	020-6515	020-6510	020-6525	020-6520
With line 	4.05	6	021-6415	021-6410	021-6425	021-6420
	3.2	¼"	021-6515	021-6510	021-6525	021-6520

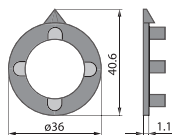
Packaging size: 100 pieces



CAP

TYPE		SURFACE	GRAY	BLACK	RED
Without line 		Matt	040-6015	040-6025	040-6035
		Glossy	040-6010	040-6020	040-6030
With line 		Matt	040-6615	040-6625	040-6635
		Glossy	040-6610	040-6620	040-6630

Packaging size: 100 pieces



POINTER

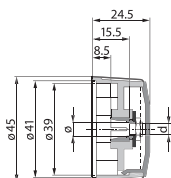
SURFACE	GRAY	BLACK	RED
Matt	041-6015	041-6025	041-6035
Glossy	041-6010	041-6020	041-6030

Packaging size: 100 pieces

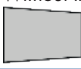

Dimensions and ordering information

SHAPE, DIMENSION AND PART NUMBER

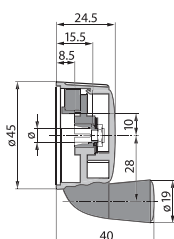
KNOB SIZE: Ø 45 MM



KNOB

TYPE	d	SHAFT DIAMETER	GRAY GLOSSY	BLACK GLOSSY
Without line 	4.05	6	020-7410	020-7420
	3.2	¼"	020-7510	020-7520
With line 	4.05	6	021-7410	021-7420
	3.2	¼"	021-7510	021-7520

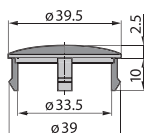
Packaging size: 50 pieces



CRANK KNOB

TYPE	d	SHAFT DIAMETER	GRAY GLOSSY	BLACK GLOSSY
	4.05	6	020-8410	020-8420

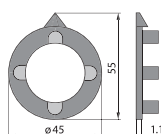
Packaging size: 40 pieces



CAP

TYPE	SURFACE	GRAY	BLACK	RED
Without line 	Glossy	040-8010	040-8020	040-8030

Packaging size: 100 pieces



POINTER

TYPE	GRAY	BLACK	RED
Glossy	041-7110	041-7120	041-7130

Packaging size: 100 pieces

Ordering information

ORDERING CODE

02 - - - - -

TYPE LINE	
0	Knob without line
1	Knob with line
3	Wing knob with line

SURFACE	
0	Glossy
5	Matt

COLOR	
1	Gray
2	Black

KNOB SIZE	COLLET DIAMETER Ø							COLLET WITH THROUGH DRILLING Ø				
	2	3	4	5	6	1/8"	1/4"	4	6	1/8"	1/4"	
9 mm	10	11				12						
10 mm	20	20	23			22						
14.5 mm	30	31	33	36	34	32	35			3 G		
21 mm	40	41	43	46	44	42	45	4 E	4 F	4 G	4 H	
28 mm		51	53	56	54		55	5 E	5 F	5 G	5 H	
36 mm			63	66	64		65	6 E	6 F		6 H	
45 mm					74		75		7 F		7 H	

Explanation:

- Standard version
- Optional
- Not possible

Specifications

MECHANICAL DATA

FASTENING AND OPERATING TORQUE

KNOB DIAMETER Ø	COLLET DIAMETER Ø									
	2 mm		3 mm, 1/8"		4 mm		6 mm		1/4"	
	a	b	a	b	a	b	a	b	a	b
	Ncm	Ncm	Ncm	Ncm	Ncm	Ncm	Ncm	Ncm	Ncm	Ncm
9 mm	50	25	50	25						
10 mm			80	40	80	60				
14.5 mm			100	50	100	80	120	140	120	140
21 to 45 mm					100	80	160	140	120	140

a = max. admissible fastening torque for screws respective nuts

b = operating torque for stainless steel shafts with a tolerance of +0 / -0.018 mm for max. tightening torque

MATERIALS

Collets, sleeves, nuts:

Brass

Knobs:

Polyamid

ENVIRONMENTAL DATA

Operating temperature:

-40 to +70 °C

Flammability:

UL94-HB

©Copyright 2018 by Elma Electronic AG, CH-8620 Wetzikon. Subject to technical modifications, all data supplied without liability.

Please contact our sales team for more details.

China: +86 21 5866 5908
 France: +33 388 56 72 50

Germany: +49 7231 97 34 0
 Israel: +972 3 930 50 25

Singapore: +65 6479 8552
 Switzerland: +41 44 933 41 11

United Kingdom: +44 1234 838 822
 United States: +1 510 656 3400