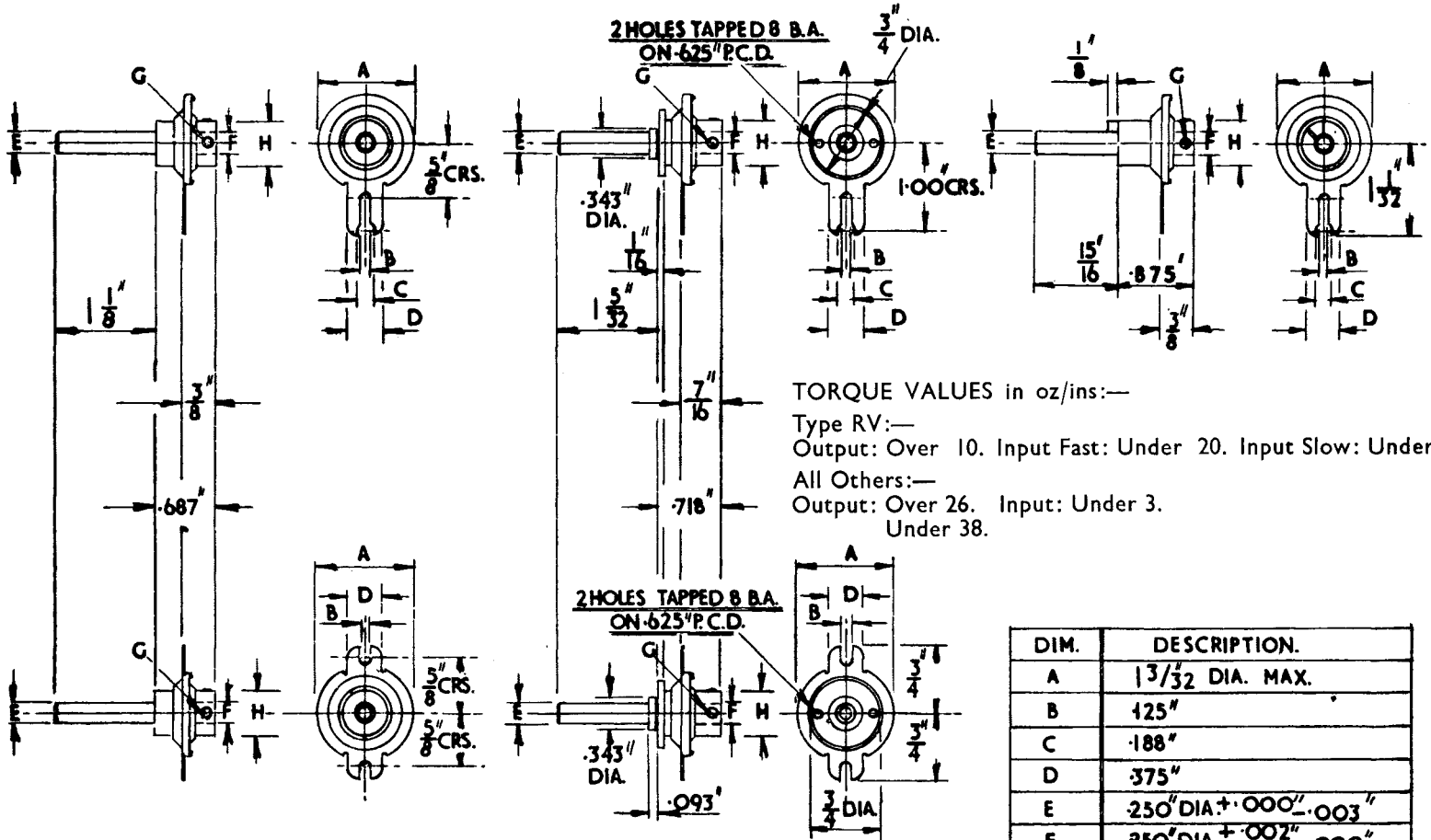


# 6 : 1 BALL DRIVES

PART No. 4511

TYPE F  
PART No. 4511 | F

TYPE RV  
PART No. 4511 | RV



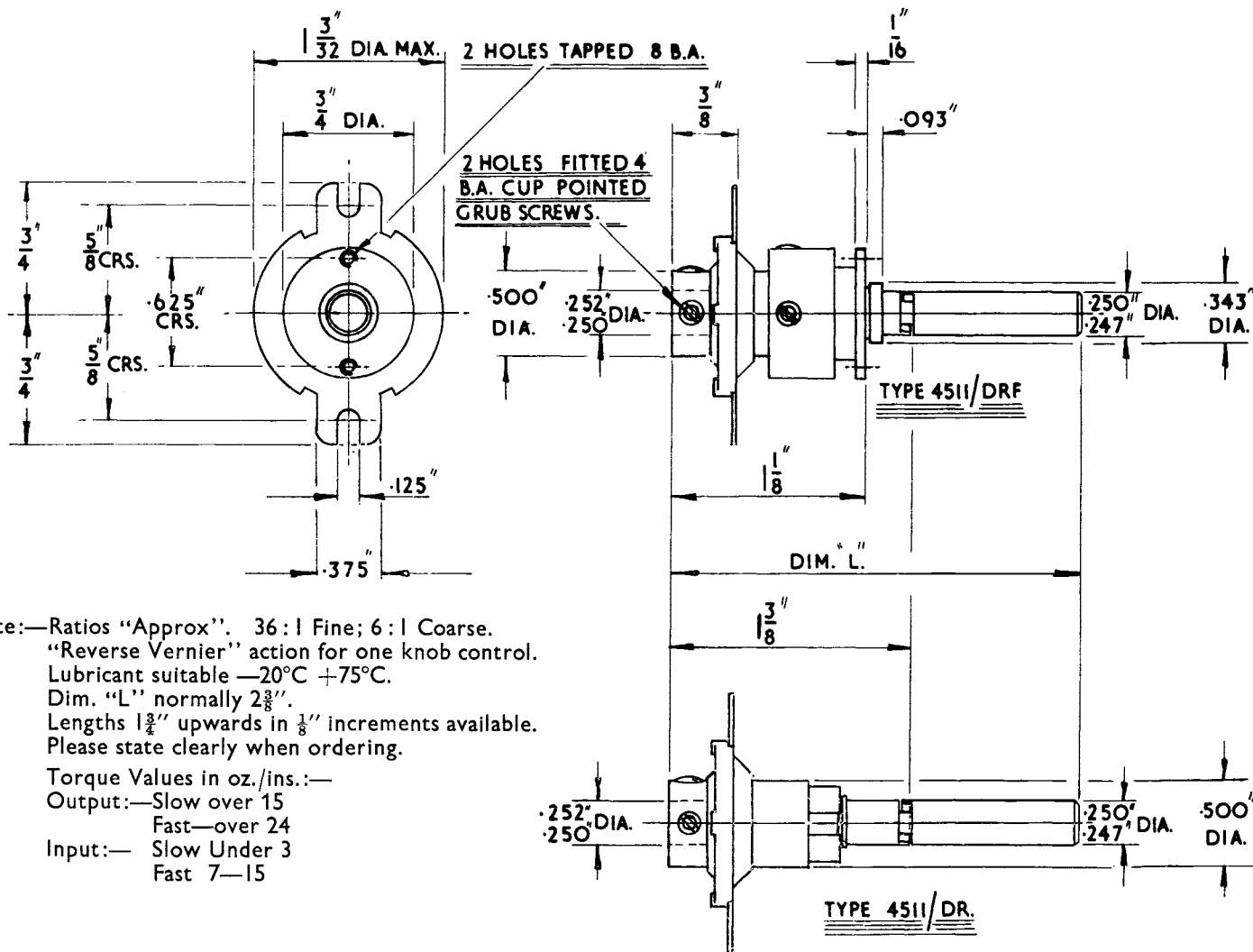
TORQUE VALUES in oz/ins:—  
 Type RV:—  
 Output: Over 10. Input Fast: Under 20. Input Slow: Under 3  
 All Others:—  
 Output: Over 26. Input: Under 3.  
 Under 38.

TYPE DA  
PART No. 4511 | DA

TYPE DAF  
PART No. 4511 | DAF

DIM.	DESCRIPTION.
A	13/32 DIA. MAX.
B	.125"
C	.188"
D	.375"
E	.250" DIA. +.000"-.003"
F	.250" DIA. +.002"-.000"
G	2 TAPPED HOLES FITTED 4 B.A. CUP POINTED GRUB SCREWS
H	.500" DIA.

## DUAL RATIO BALL DRIVES

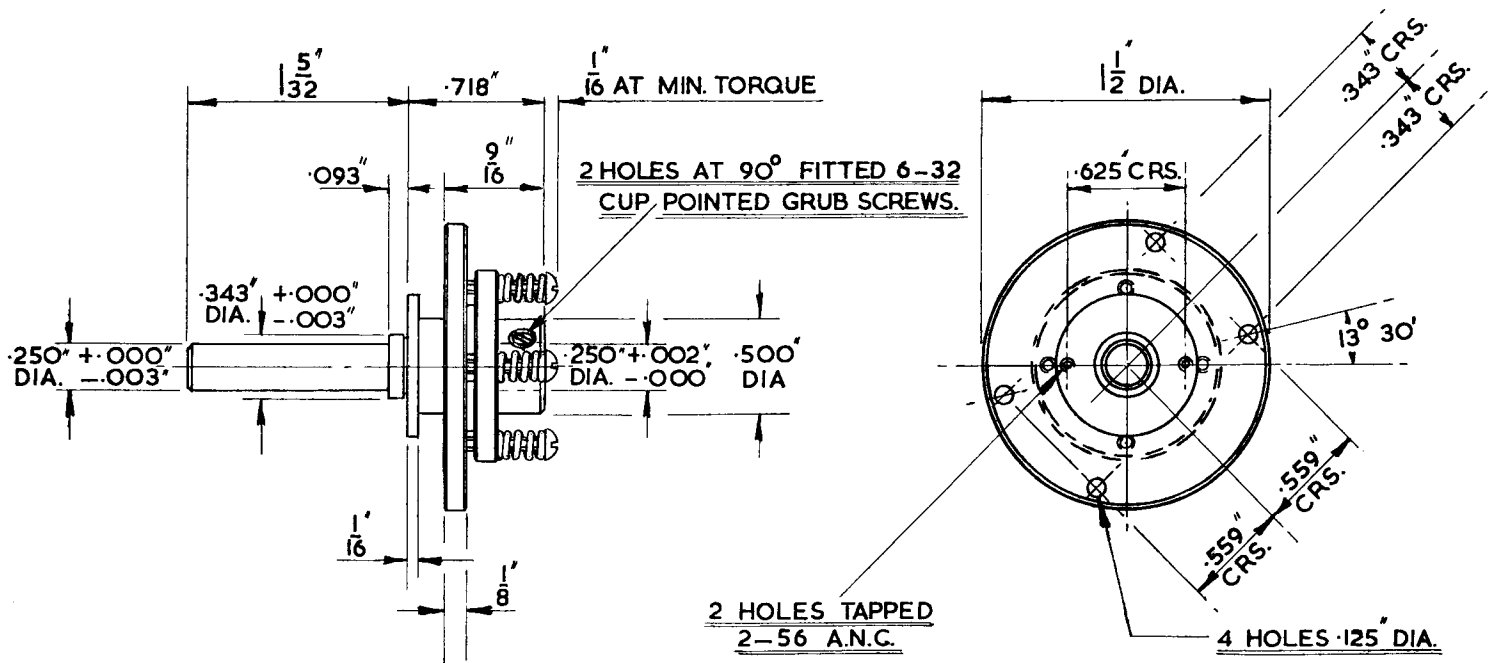


Note:—Ratios "Approx". 36:1 Fine; 6:1 Coarse.  
 "Reverse Vernier" action for one knob control.  
 Lubricant suitable  $-20^{\circ}\text{C}$   $+75^{\circ}\text{C}$ .  
 Dim. "L" normally  $2\frac{3}{8}$ ".  
 Lengths  $1\frac{3}{4}$ " upwards in  $\frac{1}{8}$ " increments available.  
 Please state clearly when ordering.  
 Torque Values in oz./ins.:—  
 Output:—Slow over 15  
           Fast—over 24  
 Input:—  Slow Under 3  
           Fast 7—15

One Coaxial Shaft provides Reverse Vernier Action with 36-1 ratio and Fast Drive of 6-1 ratio. Only  $1\frac{1}{8}$ " diameter  $\times$   $1\frac{1}{8}$ " long (excluding length of Spindle). Provided with  $\frac{1}{8}$ " Shaft. As an optional extra an Aluminium Flanged Bush for pointer fixing can be provided.

Drawing No. 4511/DR (without Flanged Bush). Drawing No. 4511/DRF (with Flanged Bush).

# ADJUSTABLE TORQUE BALL DRIVE



RATIO 6:1

OUTPUT TORQUE  $\div$  THIS DRIVE IS SO DESIGNED THAT THE CUSTOMER CAN ADJUST THE OUTPUT TORQUE TO SUIT HIS OWN APPLICATION.

MINIMUM RECOMMENDED SETTING - 20 OZ.INS.

MAXIMUM " " - 60 OZ.INS.

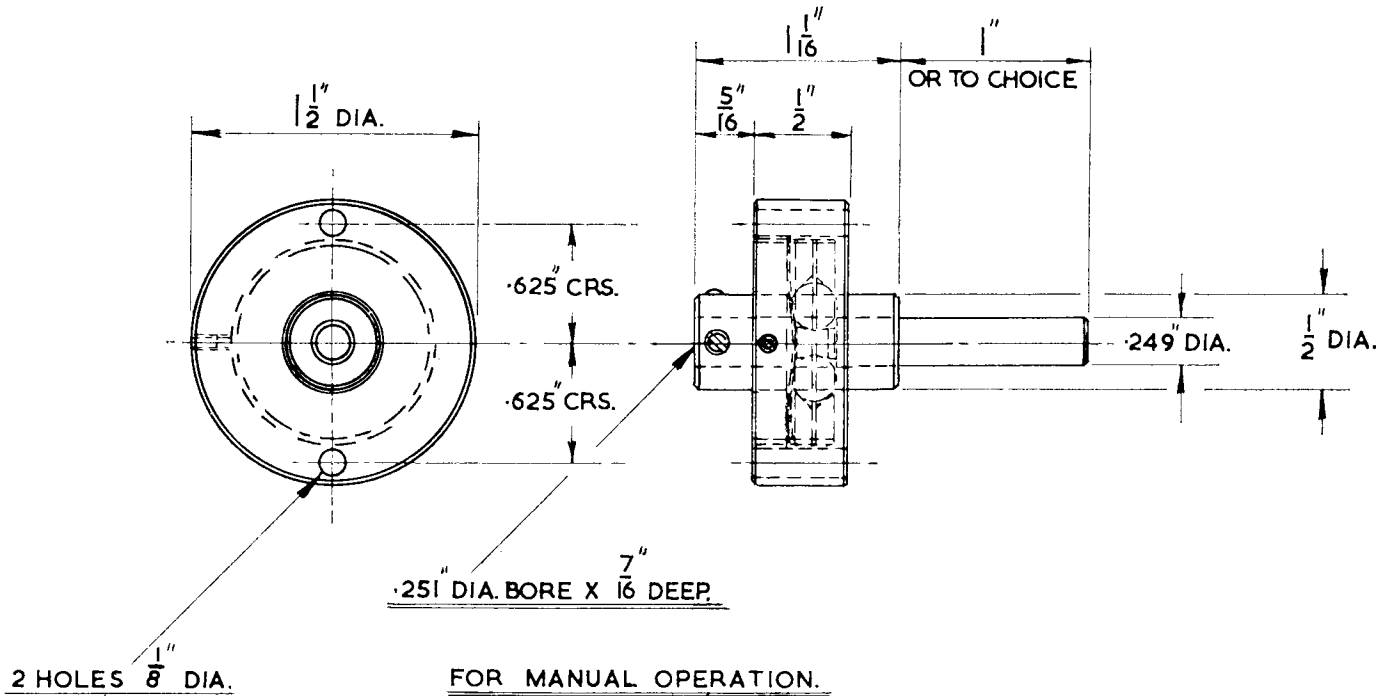
Drawing No. 5620

Material:— Dural Cage. Stainless Steel Shaft. Steel Springs. Remainder Brass.

Finish:— Brass-Nickel Plated. Remainder Clean.

Scale:— Full Size. Limits within:— Dec. Dim's.  $\pm .005$ ". Frac. Dim's.  $\pm \frac{1}{16}$ " except where shown.

# HEAVY DUTY EPICYCLIC DRIVE



FOR MANUAL OPERATION.

RATIO :- 6:1

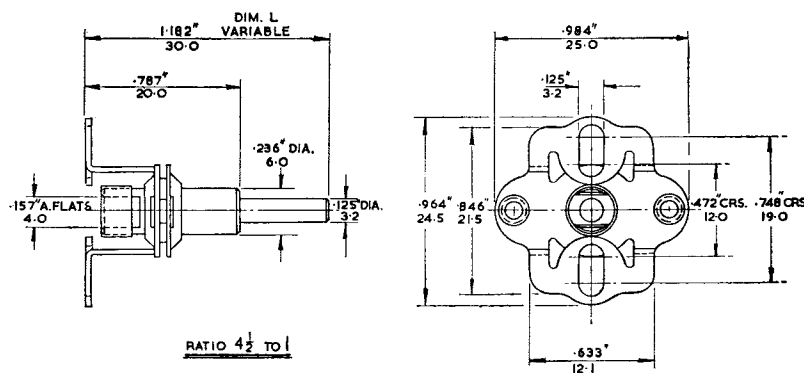
HARDENED & GROUND DRIVE SHAFT & RACES.

ALUMINIUM CAGE. BRASS BUSH.

OUTPUT TORQUE 100 OZ. INS.

Drawing No. 5670

## MINI BALL DRIVE



The Mini Ball Drive is a cheap efficient fine tuning control for the many solid dielectric types of variable capacitors now available.

The Output Torque is ample to turn a component having up to 10 oz. ins. turning Torque.

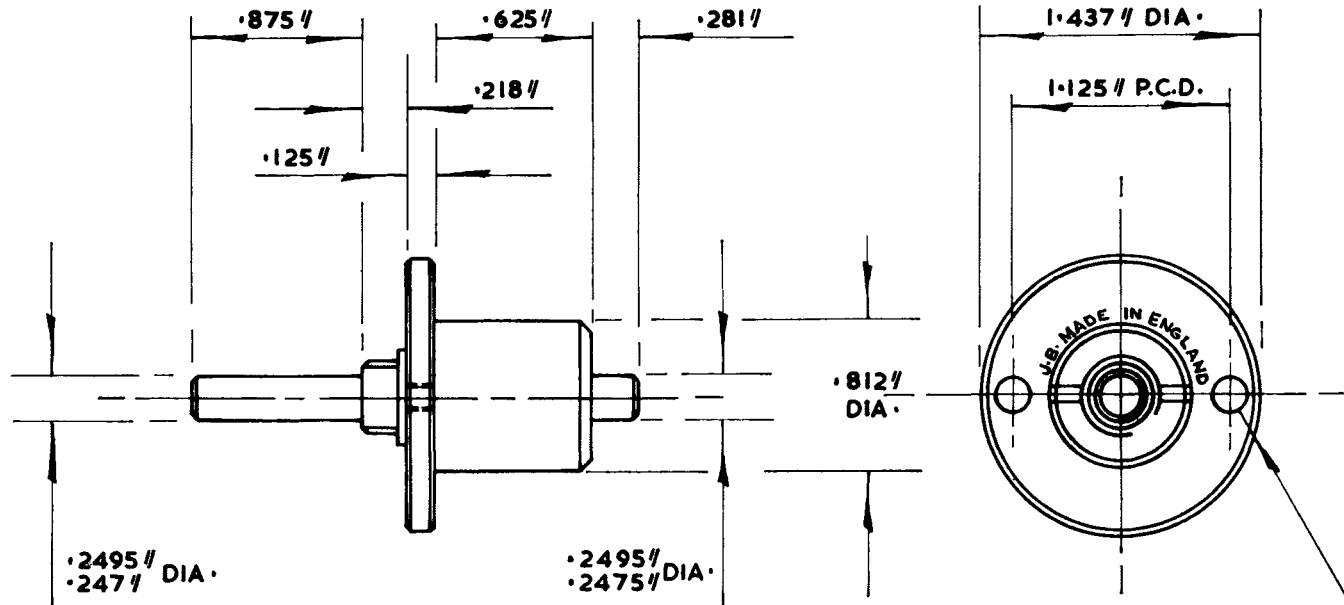
The reduction ratio is  $4\frac{1}{2} : 1$ .

Neat and precise, the mounting bracket can be screwed to the front plate of any make of solid dielectric capacitor.

The material is Steel with Brass bush. The cage and shaft are Cadmium Plated.

Drawing No. 5690.

# 10 : 1 EPICYCLIC DRIVE



## NOTES:

**MATERIAL :**  
 BODY & COLLAR : ALUMINIUM ·  
 BARREL & ADJUSTING SCREWS : BRASS ·  
 CONE : MILD STEEL ·  
 INPUT SHAFT : STAINLESS STEEL ·

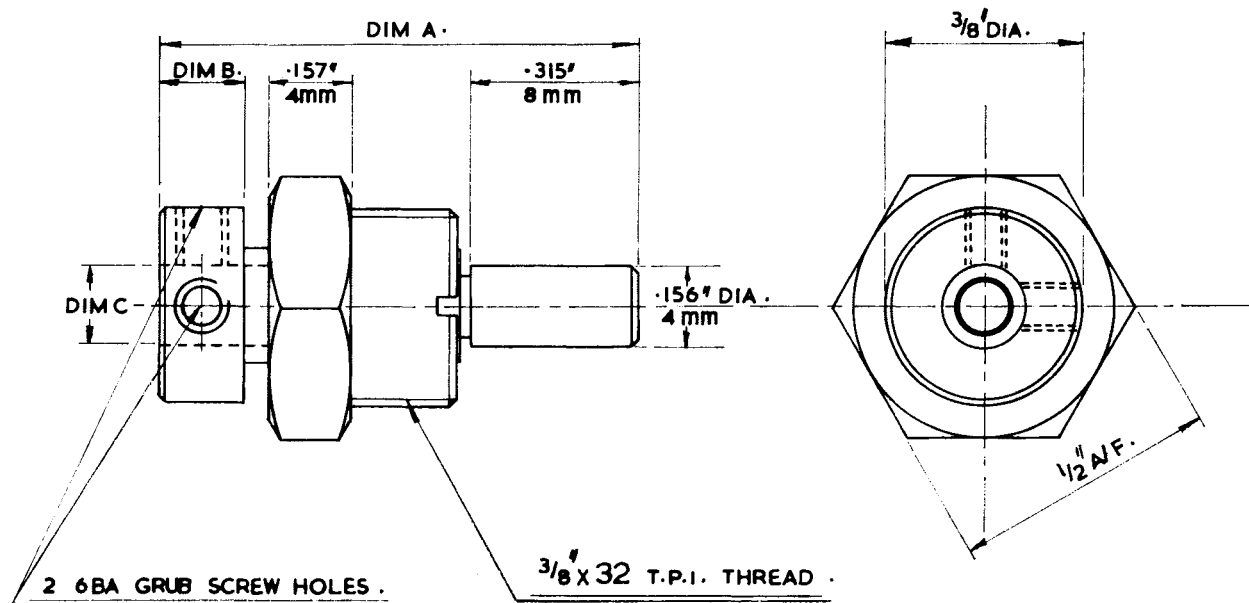
REDUCTION RATIO : 10 : 1.  
 OUTPUT TORQUE : GREATER THAN 30 OZ. INS.

2 HOLES  $\cdot 112 \text{ //}$  DIA ·  
 DRILL N<sup>o</sup> 33

Drawing No. 5857

# MINIATURE 10:1 DRIVE UNIT

OUTPUT TORQUE GREATER THAN 8OZ/INS.

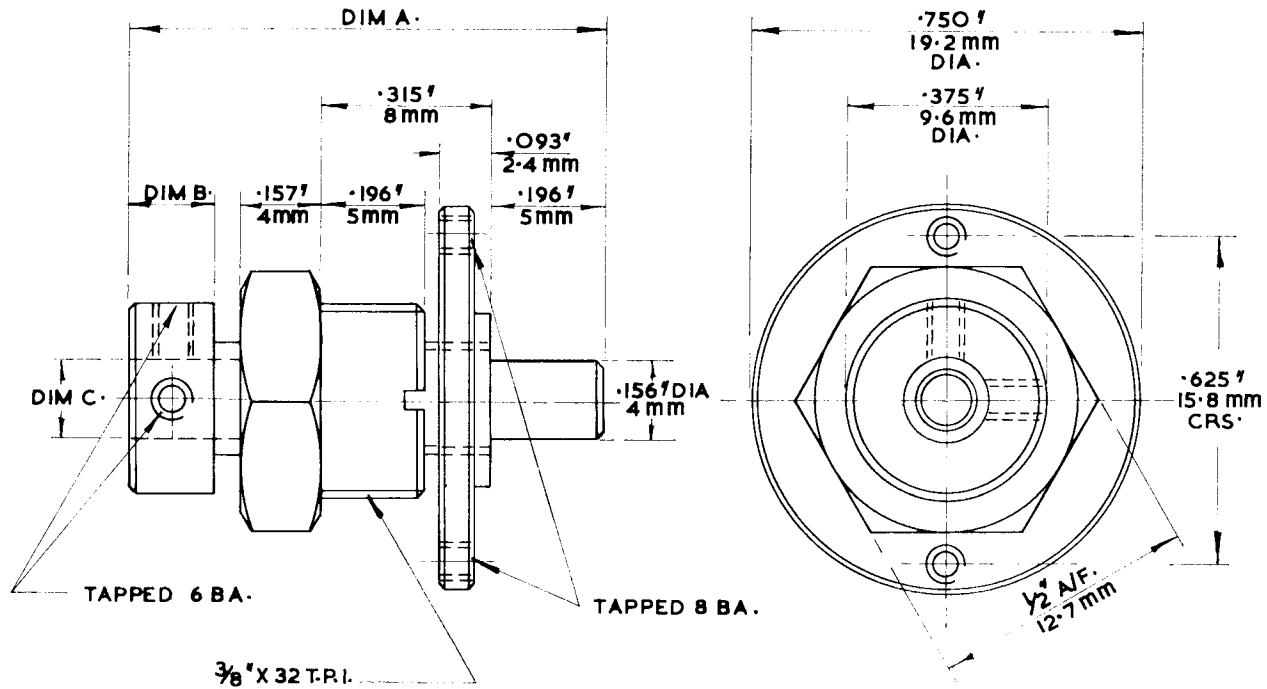


5870 / 3	.945" (24 m)	.196" (5 m)	.250" DIA (6.35)
5870 / 2	.945" (24 m)	.196" (5 m)	.236" DIA (6 m)
5870 / 1	$29/32$ " (23 m)	.157" (4 m)	.157" DIA (4 m)
PART N <sup>o</sup>	DIM A.	DIM B.	DIM C.

Drawing No. 5870

# MINIATURE 10:1 FLANGED DRIVE UNIT

OUTPUT TORQUE GREATER THAN 8 OZ/INS.

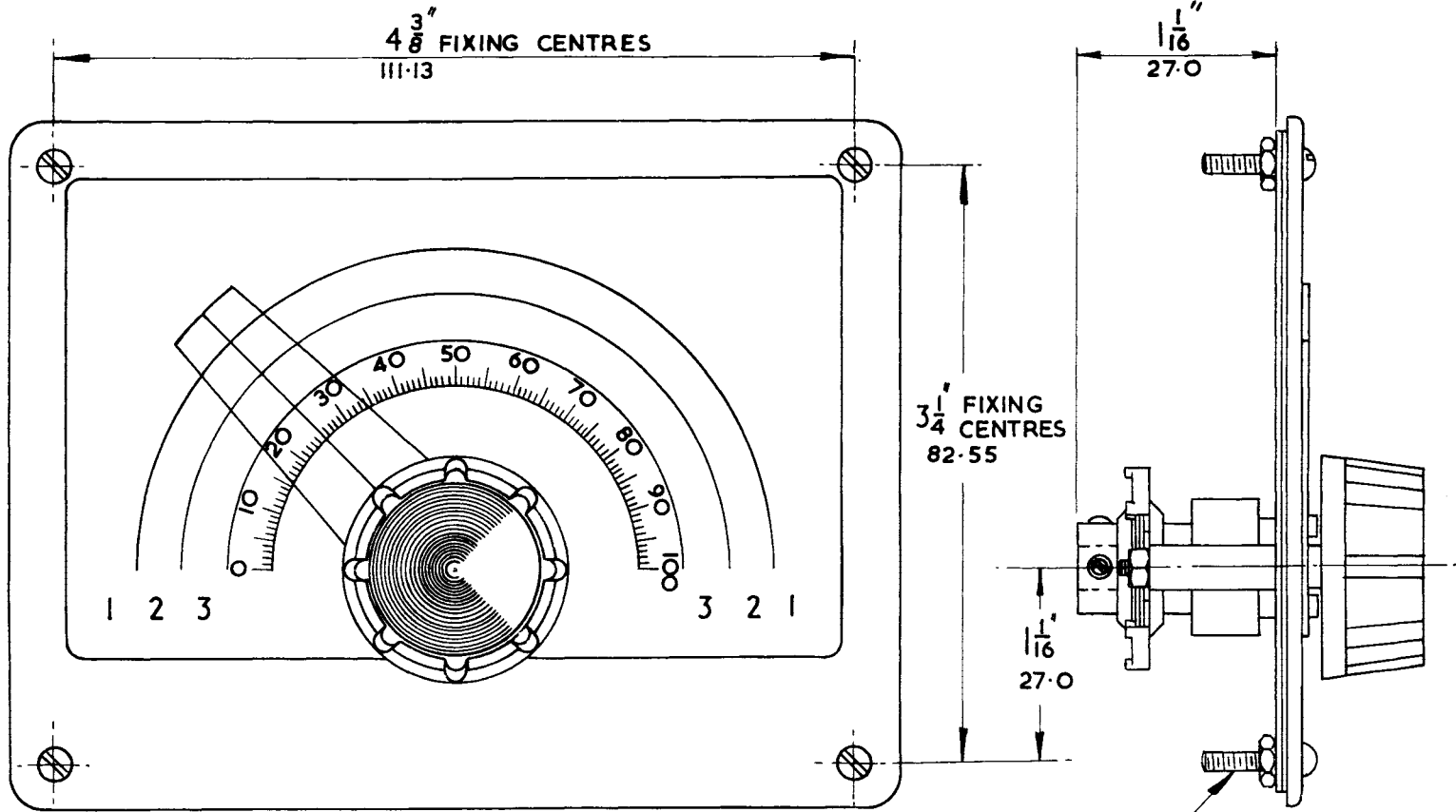


5870 / F / 3	.945" (24 mm)	.196" (5 mm)	.250" DIA (6.35)
5870 / F / 2	.945" (24 mm)	.196" (5 mm)	.236" DIA (6 mm)
5870 / F / 1	.792" (20 mm)	.157" (4 mm)	.157" DIA (4 mm)
PART NO	DIM A	DIM B	DIM C

Drawing No. 5870/F



# No. 6/36 DRIVE



RATIOS "APPROX". 36 : 1 FINE; 6 : 1 COARSE.

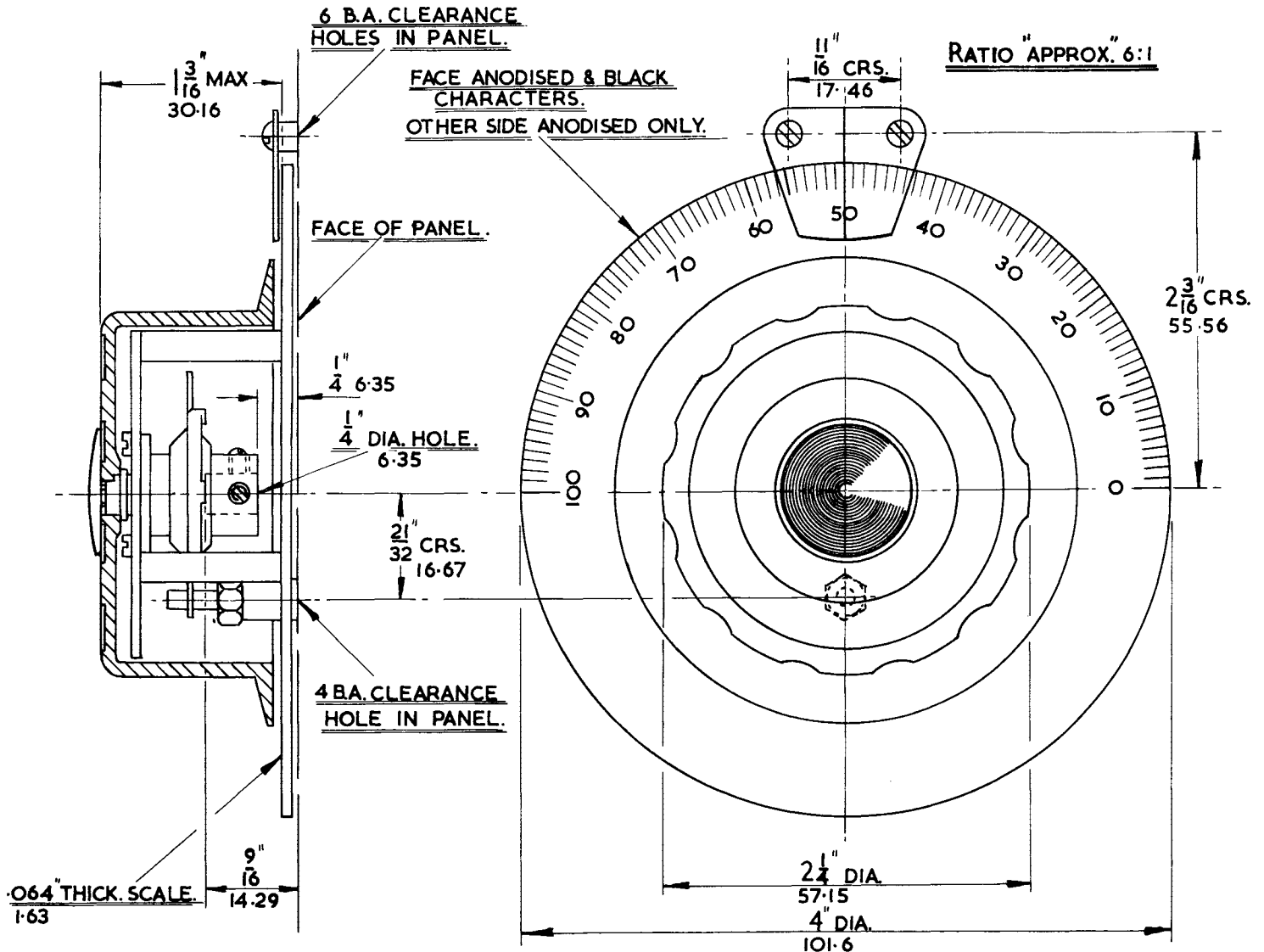
FIXING TEMPLATE PART No. 4103/TEM.

SUPPLIED WITH SPARE SCALE.

6 B.A. X  $\frac{1}{16}$  14.29 RD. HD. SCREWS  
BLACK OXIDE FINISH.

Incorporating the Dual Ratio Ball Drive providing 36-1 Slow drive and 6-1 Fast drive under one Knob with co-axial control. Scale is calibrated 0-100 and provides for individual calibration. The unit consists of aluminium back plate, drive unit, scale, spare scale, transparent cover, hair-line pointer, escutcheon and knob. Fits in front of panel which may be any thickness up to  $\frac{3}{8}$ " (or more by providing longer screws). Drawing No. 4103/A.

# BALL DRIVE DIAL



Specification :—

Aluminium Scale. Black Plastic Knob. Jackson Ball Drive Unit incorporated within Knob. Other Parts Brass.  
Friction Drive Ratio Approx. 6—1. Drawing No. 4489/C.  
The Scale is reversible. One side printed as shown, the other left plain for customer to engrave as he wishes.