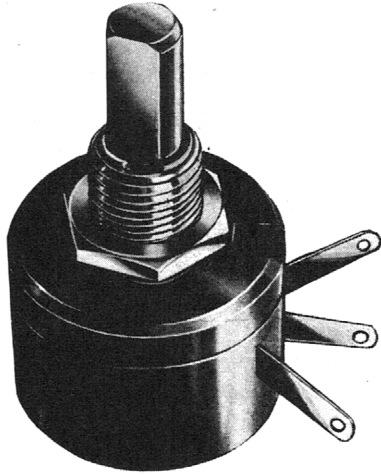


RELIANCE POTENTIOMETERS

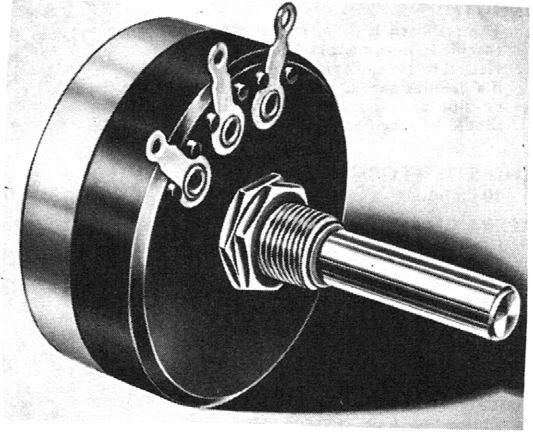
MW

Wirewound
Potentiometer
Under 1" Diameter
Resistance up to
50K Ω



T W

Wirewound
Potentiometer
Single Turn 5 Watts



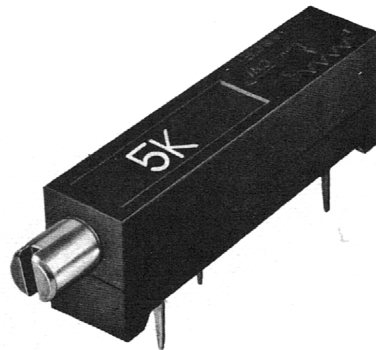
Wirewound
Helical Potentiometer
Ten Turn Miniature

HEL 07-10



CW 52

Miniature
Wirewound
Trimmer



actual size

RELIANCE POTENTIOMETERS

SPECIFICATION Type TW

Type MW (MINIATURE)

MECHANICAL DATA

MOUNTING:

TW/1: $\frac{3}{8}$ in. \times 32 TPI Bush and Nut.

MECHANICAL DATA

SPINDLE:

$\frac{1}{4}$ in. dia. Insulated.

LENGTH:

The standard is 1 in. free length, although any specific requirement can be produced. Flatted or slotted spindles can be supplied. If a definite angular relationship between the flat or slot and the contact arm is required this should be specified.

END STOP TORQUE:

10 lb. ins.

OPERATING TORQUE:

1—5 ins.

WEIGHT:

1 $\frac{1}{2}$ ozs.

ELECTRICAL DATA

RESISTANCE RANGE:

Linear Law A: 1—100,000 ohms.
Laws B—G: 50—50,000 ohms.
Non Inductive (Ayrton Perry): 50—10,000 ohms.

RESISTANCE TOLERANCE:

Standard: Over 100 ohms \pm 5%.
Under 100 ohms \pm 10%.

The following can be supplied at extra cost:

Tolerance to \pm 1%.
Linearity to within \pm 1%.

TAPPINGS:

Multiple tappings can be supplied.

WATTAGE RATING (Whole element uniformly loaded):

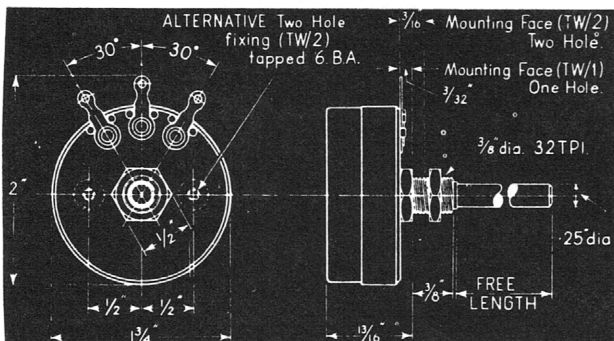
Linear 5 watts at 20°C. ambient.
Graded 2.5 watts, ditto

ROTATION:

Electrical effective 270° \pm 5%.
Mechanical 300° \pm 5%.
360° Mechanical Rotation can be supplied if required.

MAXIMUM WORKING VOLTAGE:

Between spindle and track, 1,000 V.d.c.



ELECTRICAL DATA

RESISTANCE RANGE:

Linear Law only: 5—50,000 ohms.

RESISTANCE TOLERANCE:

Over 100 ohms. \pm 5%.
Under 100 ohms. \pm 10%.

WATTAGE RATING (Whole element uniformly loaded):

1 Watt at 20° C. ambient.

ROTATION:

265°—280° Dependent on
280°—295° Resistance Value

MAXIMUM WORKING VOLTAGE:

Between spindle and track 500 V.d.c.

MOUNTING:

$\frac{3}{8}$ in. \times 32 TPI Bush and Nut.

SPINDLE

$\frac{1}{4}$ in. dia., Insulated.

LENGTH:

The standard is $\frac{1}{4}$ in. free length, although any specific requirements can be produced. Flatted or slotted spindles can be supplied.

If a definite angular relationship between the flat or slot and the contact arm is required this should be specified.

END STOP TORQUE:

10 lb. ins.

OPERATING TORQUE:

1—5 oz. ins.

WEIGHT:

15 grammes.

