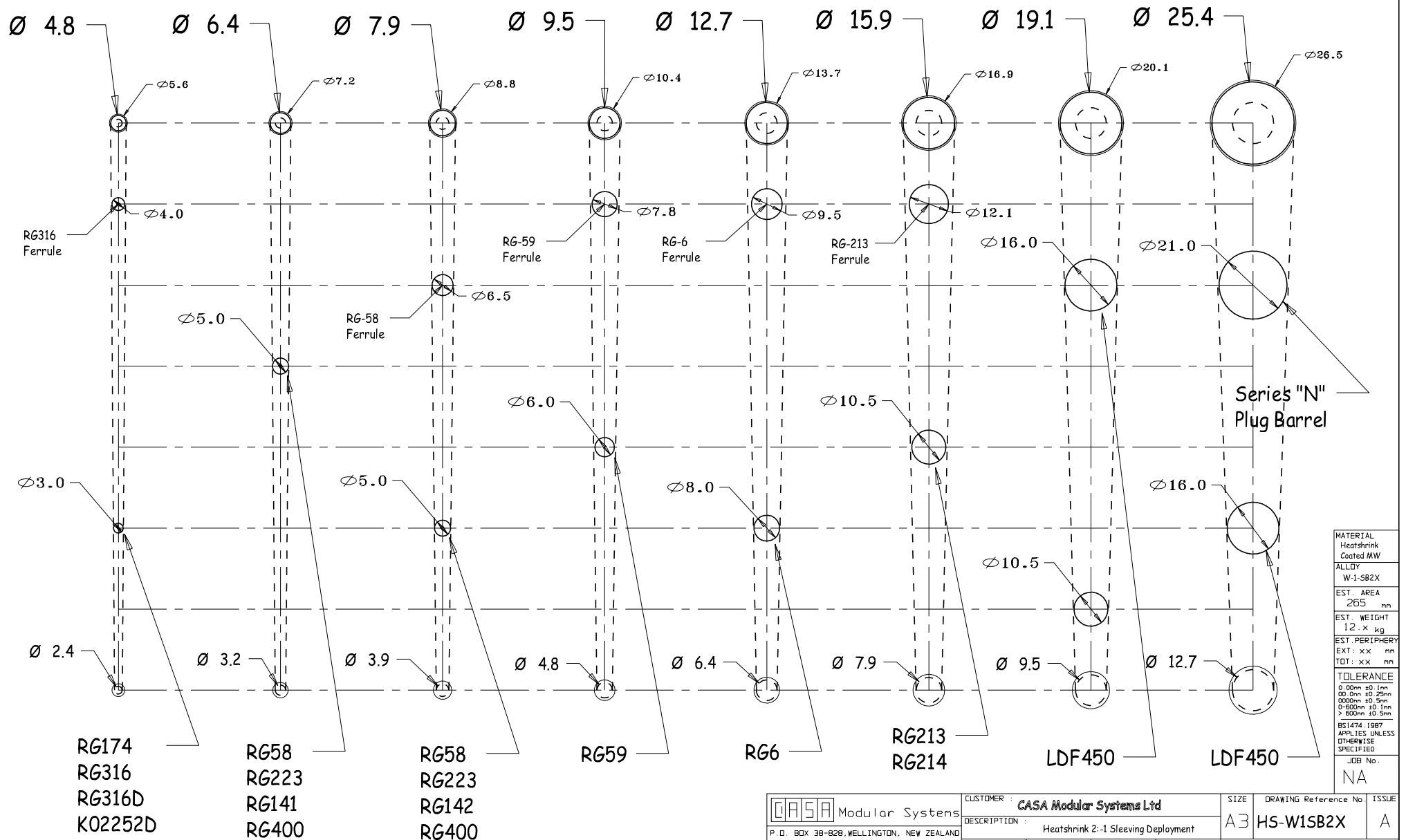


# Deployment Guide-Chart for 2:1 Thin-Dual-Wall (adhesive-coated) Heatshrink Sleeveings in preferred sizes 3/16" (4.8mm) to 1" (25.4mm) ID



MATERIAL	Heatshrink
Coated MW	
ALLOY	W-1-SB2X
EST. AREA	265 mm
EST. WEIGHT	12. x kg
EST. PERIPHERY	EXT: xx mm
EST. PERIPHERY	INT: xx mm
TOLERANCE	0.00mm ±0.1mm
	0.00mm ±0.25mm
	0.00mm ±0.5mm
	0.00mm ±0.1mm
	> 0.00mm ±0.5mm
BS1474:1987	APPLIES UNLESS OTHERWISE SPECIFIED
JOB No.	NA

<b>CASA</b> Modular Systems P. O. BOX 38-828, WELLINGTON, NEW ZEALAND TELEPHONE : (64-4) 5687 277 FACSIMILE : (64-4) 5685 161	CUSTOMER : <b>CASA Modular Systems Ltd</b>		SIZE	DRAWING Reference No.	ISSUE
	DESCRIPTION : Heatshrink 2:1 Sleeve Deployment		A3	HS-W1SB2X	A
	DRAWN : A.W.D.	DATE : 18/10/09	APPROVED : ?	DWG. SCALE : 1:1	© COPYRIGHT : CASA Modular Systems 1998 ALL RIGHTS RESERVED