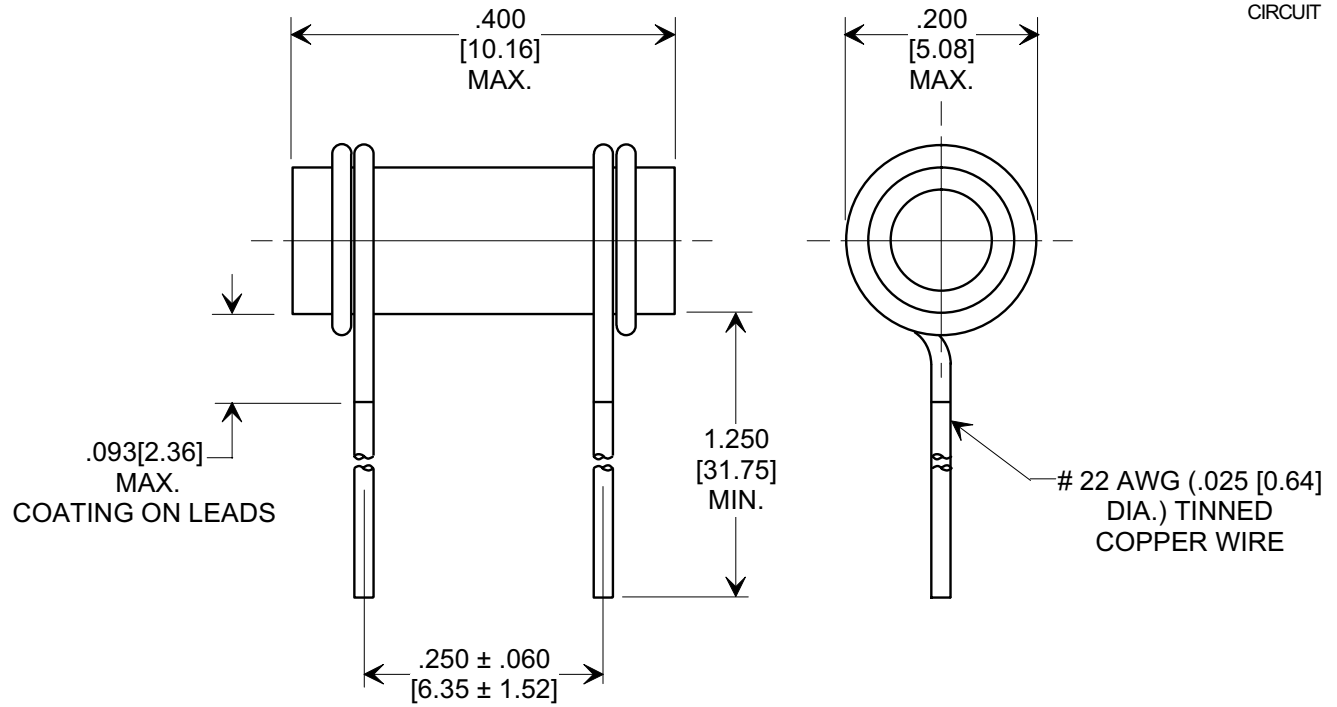
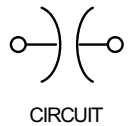
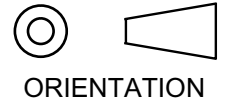


Electrical Testing
per Tusonix standard
test plans and Mil-Std-202
Test Methods.

MARKETING SALES DRAWING
DIMENSIONS IN INCHES - DO NOT SCALE THIS DRAWING
DIMENSIONS IN METRIC - []



SPECIFICATIONS

TUSONIX STYLE		301-000
Value:		.5 pF
Value Tol.:		± .25 pF
Temp. Coef.:		COK
Operating Range:		-55°C TO 85°C
IR min @ 100 vdc		50 GΩ
Voltage:	Working:	500 vdc
	Test:	1500 vdc
	Life:	1000 vdc
Marking:		Standard Color Code

NOTE:
WHITE ENAMEL COATING

REVISION RECORD Original Release C.O. 20000403-3-01 METRIC DIM'S, CIRCUIT, SYMBOL ORIENTATION ADDED SPEC. TABLE REVISED L.E. 09-03-03 20030902-4-01	--TOLERANCES-- Unless Otherwise Specified	Title ENAMEL COATED TUBULAR CAPACITOR
	DECIMAL ±	Drawn S.M. 04-04-00 Scale X 5
	ANGLES ±	Approved T.C. 04-04-00
	TUSONIX TUCSON, ARIZONA	A 301-000-COK0-508C