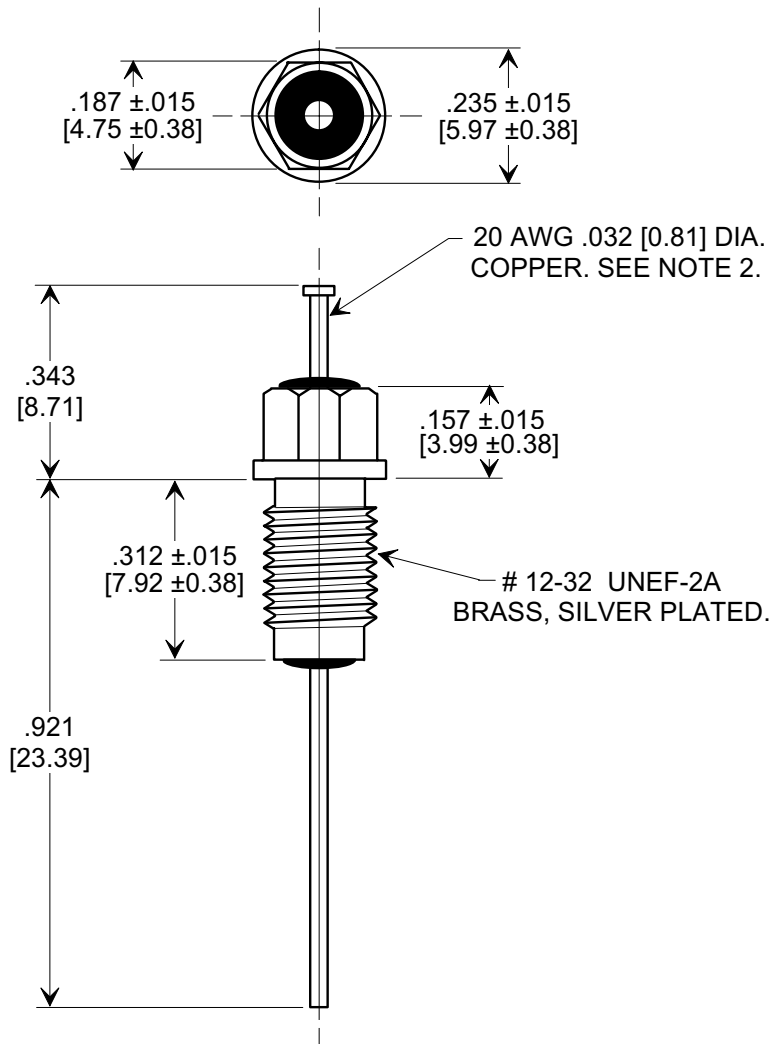
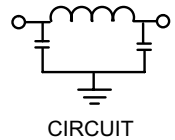
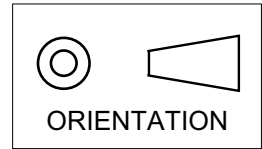


Electrical Testing
per Tusonix standard
test plans and Mil-Std-202
Test Methods.

MARKETING SALES DRAWING
DIMENSIONS IN INCHES - DO NOT SCALE THIS DRAWING
DIMENSIONS IN METRIC - []



NOTES:

1. TUSONIX STANDARD PART NUMBER: 4203-001.
TUSONIX RoHS COMPLIANT PART NUMBER: 4203-001 LF.
CUSTOMER MUST SPECIFY STANDARD OR RoHS PART NUMBER WHEN ORDERING.
2. LEAD FINISH: STANDARD PART #: 60/40 SOLDER PLATED COPPER. RoHS PART #: SILVER PLATED COPPER.
3. PART MARKING: TRADEMARK AND VARIATION NUMBER ON HEX FLATS.
STANDARD PART: BLACK INK. RoHS PART: GREEN INK.
4. SUPPLIED WITH SILVER PLATED COPPER ALLOY HEX NUT AND INTERNAL TOOTH LOCK WASHER.

MIN. CAP. (pF)	WORKING VOLTAGE (WVdc)		CURRENT IDC	I.R. MIN. @ 100 (VDC)	DWV (VDC)	MINIMUM NO LOAD INSERTION LOSS (dB) AT 25°C PER MIL-STD -220			
	85°C	125 °C				10 MHz	100 MHz	1 GHz	10 GHz
1500	350	200	10 A	10 G Ω	700	5	45	70	70

X-2015 Rev-0	REVISION RECORD		TOLERANCES unless otherwise specified		Title			
	0	Original Release C.O.	2 PLC. DECIMAL ±	///	BUSHING STYLE EMI FILTER			
	1	WAS SK 6644-011-S. L.E. 01-13-84	3 PLC. DECIMAL ±	.031 [0.79]				
	2	DIM'S & TOL'S REV'D RELEASED. L.E. 1-8-85	ANGLES ±	///	Drawn	S.M. 05-22-02	Scale	X 3
	3	CURRENT UNIT "A" ADDED. L.E. 08-20-85	TUSONIX		Approved		J.Mc. 05-22-02	
4	RDN TO COMP FMT & ADDED METRIC. S.M. 05-22-02	TUCSON, ARIZONA		A		4203-001		
5	ADDED NOTES, IR & DWV. S.M. 11-14-05	20051026-5-03						