



TE100-S16 16-port 10/100Mbps NWay Switch (Rack Mount)

TRENDnet's TE100-S16 is a high performance auto-sensing NWay switch that automatically negotiates between 10Base-T and 100Base-TX network speeds. All ports support half- and full-duplex that allows maximum network performance. It is designed to eliminate unnecessary traffic and relieve congestion on critical network paths. Designed and built to increase network bandwidth, TRENDnet's TE100-S16 is the best solution for both corporate and small business network environments.



FEATURES

- Compliant with IEEE 802.3 10Base-T, IEEE 802.3u 100Base-TX
- Support 16 UTP/STP RJ-45 10/100Mbps NWay auto-sensing ports
- Auto-MDIX on each port
- Supports store and forward switching architecture with non-blocking full wire-speed performance
- Half- and full-duplex operation for each port
- Supports aging function and 802.3x flow control for full-duplex mode and back pressure flow control for half-duplex mode operation
- Auto-learning of network configuration
- Built-in 8K entries per device for Filtering Address Table
- 512KB per device RAM buffer. Plug and Play
- EIA-19 Rack Mountable
- 5-Year warranty

BENEFITS

- **Easy Installation:**
Designed to link 10Mbps and 100Mbps networks.
- **Flexibility:**
All ports automatically negotiate 10/100Mbps network speed. All ports are Auto-MDIX; connection can be made with either a straight through or a crossover cable.
- **Cost Effectiveness:**
Provide 10/100Mbps of Fast Ethernet at an affordable rate.
- **Performance:**
Top performance at an affordable price.



TE100-S16

16-port 10/100Mbps NWay Switch (Rack Mount)

SPECIFICATIONS

Standards:

- IEEE 802.3 10Base-T, IEEE 802.3u 100Base-TX, ANSI/IEEE 802.3 NWay auto-negotiation

Connectors:

- 16 10/100Mbps shielded RJ45 Auto-MDIX ports

Network Cables:

- Ethernet: Cat. 3,4,5, UTP/STP, EIA/ITA-568 100 Ohm
- Fast Ethernet: Cat. 5, UTP/STP, EIA/TIA-568 100 Ohm

Cable Length:

- 100 meters maximum

Protocols:

- CSMA/CD

Data Transfer Rate:

- Ethernet: 10Mbps (Half-Duplex), 20Mbps (Full-Duplex)
- Fast Ethernet: 100Mbps (Half-Duplex), 200Mbps (Full-Duplex)

Data RAM Buffers:

- 512KB per device

Filtering Address Table:

- 8K entries per device

Internal Power Adapter:

- 100 ~ 240 VAC, 6 watts max.

Diagnostic LEDs:

- Power, Link/Activity, 100Mbps

Weight:

- approximately 2.0 Kg (4.4 lb.)

Dimensions:

- 440 x 140 x 44 mm (17.3 x 5.51 x 1.73 inches) (W x H x D)

Temperature:

- Operating: 0° ~ 40°C (32° ~ 104°F)
- Storage: -10° ~ 70°C (14° ~ 158°F)

Humidity:

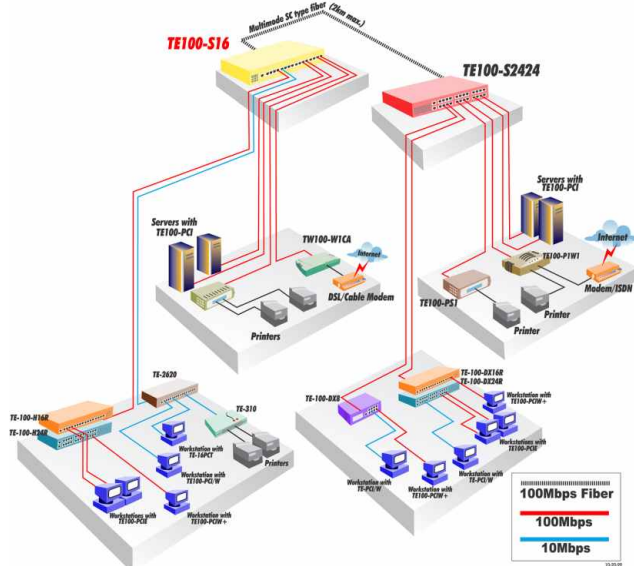
- Operating: 10% ~ 90% RH
- Storage: 5% ~ 90% RH

Certifications:

- FCC Class A, CE Mark A, VCCI-A



NETWORKING SOLUTIONS



To Order Please Call:
(04) 920-4488

RELATED PRODUCT

- ➔ **TE100-S16:**
16-port 10/100Mbps NWay Switch (Rack Mount)
- ➔ **TE100-S24:**
24-port 10/100Mbps NWay Switch (Rack Mount)
- ➔ **TE100-S16V:**
16-port 10/100Mbps Smart Switch with Fiber Slot (Rack Mount)
- ➔ **TE100-S24V:**
24-port 10/100Mbps Smart Switch with Fiber Slot (Rack Mount)
- ➔ **TE100-SFXM:**
SC-type fiber slide-in module for TE100-S16V/S24V

ORDERING INFORMATION

Computer Link Limited

10 Te Puni Street

Petone

Tel: (04) 920-4488

Fax: (04) 920-4490

Web: www.computerlink.co.nz

Email: sales@computerlink.co.nz

TRENDnet
TRENDware, USA