



TE100-S24

24-Port 10/100Mbps NWay Fast Ethernet Switch

TRENDnet's TE100-S24 is a high performance, auto-sensing 24-port NWay rack-mountable Fast Ethernet Switch. It is designed to eliminate unnecessary traffic and relieve congestion on critical network paths. With 10/100Mbps NWay technology, the TE100-S24 automatically negotiates between 10Base-T and 100Base-TX network speeds, as well as half and full duplex modes. The auto MDI-II/MDI-X detection on each port automatically detects and corrects for crossover connection and allows direct switch-to-switch or switch-to-hub connection for your networking needs.



FEATURES

- 24 10/100Mbps NWay Auto MDI-II/MDI-X ports
- Integrate address Look-Up Engine, supports up to 8K absolute MAC address
- 2.5Mb internal RAM for frame buffering
- Full/half duplex transfer mode for each port
- Wire-speed filtering/forwarding rates
- IEEE 802.3x flow control for full-duplex mode
- Back pressure flow control for half-duplex mode
- Store-and-forward switching method
- Extensive front-panel diagnostic LEDs
- No cooling fan, for quiet operation
- 5-Year Warranty

BENEFITS

- **Performance:**
Top performance at an affordable price.
- **Easy Upgrade:**
Current Ethernet workgroups are able to upgrade to Fast Ethernet by changing adapters and hubs without changing switches.
- **Flexibility:**
All ports automatically negotiate 10/100Mbps network speed, half/full-duplex mode, and MDI-II/MDI-X connector type.
- **Cost Effective:**
Provide 10/100Mbps network connection at an affordable rate.



TE100-S24

24-Port 10/100Mbps NWay Fast Ethernet Switch

SPECIFICATIONS

Standards:

- IEEE 802.3 10Base-T, IEEE 802.3u 100Base-TX, ANSI/IEEE 802.3 NWay auto-negotiation

Connectors:

- 24 10/100Mbps shielded RJ45 Auto MDI-II/MDI-X ports

Network Cables:

- Cat. 3, 4, 5 UTP/STP for 10Base-T; Cat. 5 UTP/STP for 100Base-TX

Protocols:

- CSMA/CD

Data Transfer Rate:

- Ethernet: 10Mbps (Half-Duplex), 20Mbps (Full-Duplex)
- Fast Ethernet: 100Mbps (Half-Duplex), 200Mbps (Full-Duplex)

Data RAM Buffers:

- 2.5MB per device

Filtering Address Table:

- 8K entries per device

Internal Power Adapter:

- 100~240 VAC, 10 watts max. Diagnostic LEDs: Power, Link/Activity, 100Mbps

Weight:

- appr. 2.0 Kg (4.4 lb.)

Dimensions:

- 440 x 140 x 44 mm (17.3 x 5.51 x 1.73 inch) (W x H x D)

Temperature:

- Operating: 0° ~ 40°C (32° ~ 104°F),
- Storage: -10° ~ 70°C (14° ~ 158°F)

Humidity:

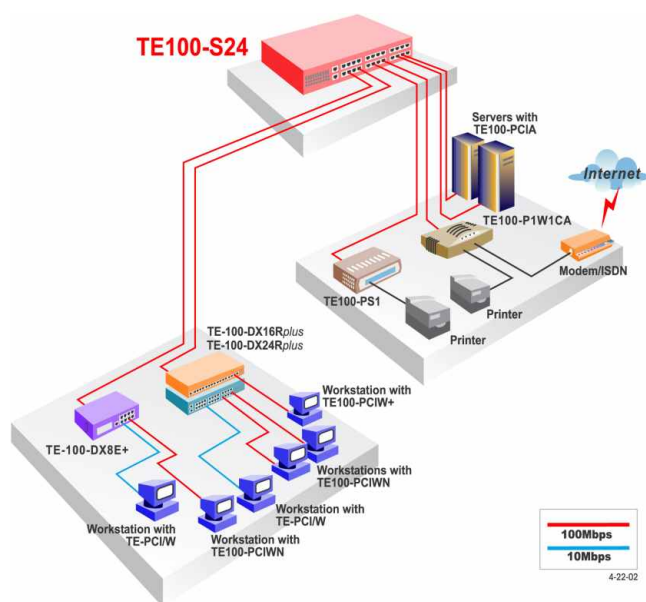
- Operating: 10% ~ 90% RH,
- Storage: 5% ~ 90% RH

Emission:

- FCC Class A, CE Mark A, VCCI-A



NETWORKING SOLUTIONS



To Order Please Call:
(04) 920-4488

RELATED PRODUCT

- ➡ **TE100-S24:**
24-port 10/100Mbps NWay Switch (Rack Mount)
- ➡ **TE100-S16:**
16-port 10/100Mbps NWay Switch (Rack Mount)

ORDERING INFORMATION

Computer Link Limited

10 Te Puni Street

Petone

Tel: (04) 920-4488

Fax: (04) 920-4490

Web: www.computerlink.co.nz

Email: sales@computerlink.co.nz

TRENDnet
TRENDware, USA