

L45Z

Splice for 7/8 in LDF5-50A cable

General Specifications

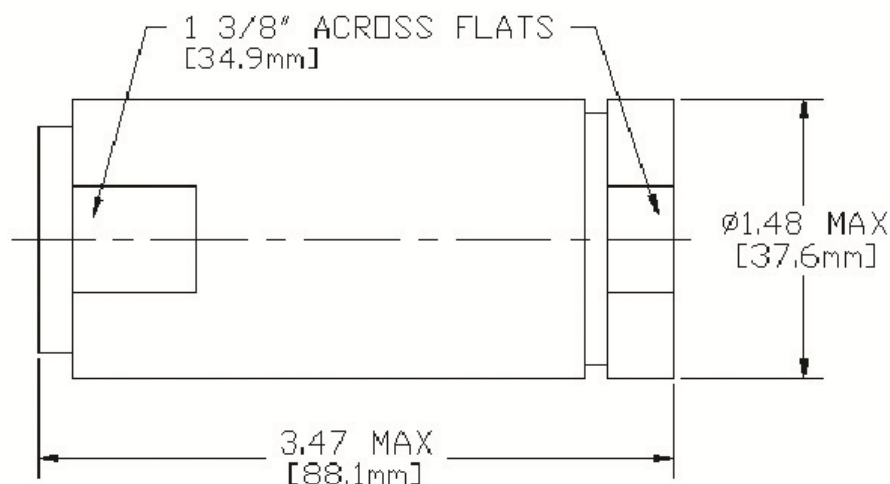
Interface	Splice
Body Style	Splice
Brand	HELIAX®
Mounting Angle	Straight

Electrical Specifications

Connector Impedance	50 ohm
Operating Frequency Band	0 – 5000 MHz
Cable Impedance	50 ohm
Insertion Loss, typical	0.05 dB

L45Z

Outline Drawing



Mechanical Specifications

Outer Contact Attachment Method	Self-flare
Inner Contact Attachment Method	Self-tapping
Outer Contact Plating	Unplated
Inner Contact Plating	Unplated
Attachment Durability	25 cycles
Connector Retention Tensile Force	890 N 200 lbf
Connector Retention Torque	5.42 N-m 48.00 in lb
Pressurizable	No

Dimensions

Nominal Size	1/2 in
Diameter	37.34 mm 1.47 in
Length	83.82 mm 3.30 in
Weight	372.00 g 0.82 lb

Environmental Specifications

Moisture Resistance Test Method	MIL-STD-202, Method 106
---------------------------------	-------------------------

Standard Conditions

Attenuation, Ambient Temperature	20 °C 68 °F
Average Power, Ambient Temperature	40 °C 104 °F

* Footnotes

Insertion Loss, typical	0.05v ⁻ freq (GHz) (not applicable for elliptical waveguide)
-------------------------	---