

Crimp Pin-In-Pin Contact for series BNC, TNC, N etc. when using Minaiture Coaxial Cables

CASA Part #:

PIN-7635-RG316

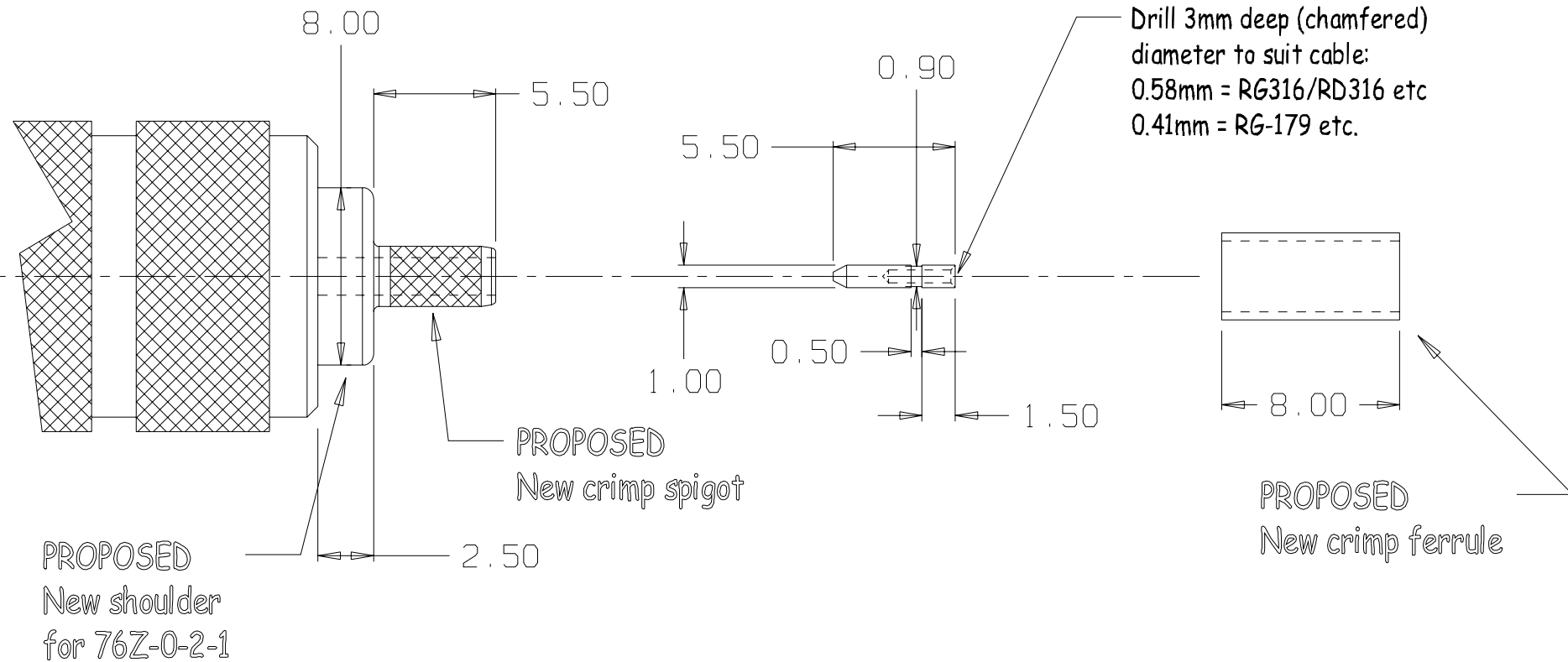
PIN-7635-RG179

Suhner Part #: 7635/2 (RG-316)

Suhner Part #: 7635/1 (RG-179)

Material: Phosphor bronze

Finish: 3~5u Gold over copper/nickel



Note: This pin provides for the use of contact-
-registration/location finger such as is included
in Suhner crimp die 76Z-0-2-1

CASA Modular Systems
P.O. BOX 38-828, WELLINGTON, NEW ZEALAND
TELEPHONE : (64-4) 5687 277
FACSIMILE : (64-4) 5685 161
E-MAIL : sales@casa.co.nz

CUSTOMER : CASA Modular Systems

DESCRIPTION : Pin-N-Pin Crimp-Pin for RG316 etc.

DRAWN : A.W.D

DATE : 18/07/12

APPROVED : ?

DWG. SCALE : 1:1

SIZE	DRAWING Reference No.	ISSUE
A4	PIN-PNP	A

© COPYRIGHT : CASA Modular Systems
ALL RIGHTS RESERVED

JOB No.
3195