

Assembly instruction Series 7/16 Combi-System P12 MAP 248

Tools and materials required:

Stanley blade
Scissors, Screw driver
Crimp tool (see table below)
Spanner SW13 (74 Z-0-0-37)
Soldering iron 100 Watts
Solder Sn/Pb 60/40 \varnothing 0,8 mm
activated rosin flux

Straight and angle connectors for flexible cable

Cable entry: crimp

Connector types: (e. g.)

16-716-50-7-9c

25-716-50-7-9c

This connector
is supplied
in 3 parts

Suitable cables e. g.

RG 393/U

Centre contact: captive

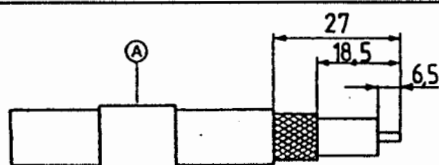
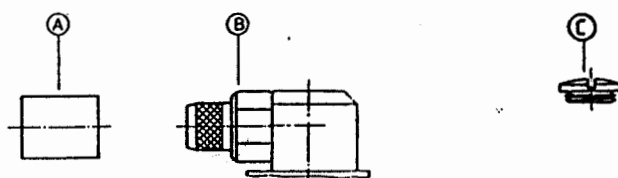
soldered

Braid:

cavity D

Crimp tool:

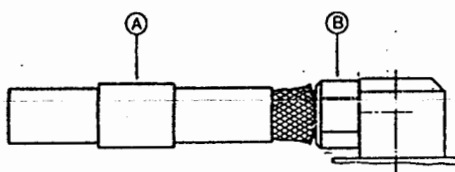
3D (violett)



Slide ferrule A onto cable.

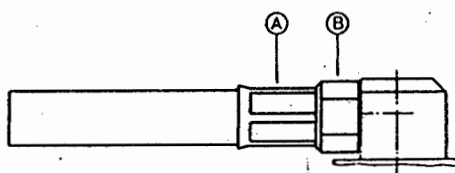
Prepare cable according to diagram.

CAUTION: Do not damage braid and inner conductor of cable!



Splay out braid and insert cable in connector body B.

Ensure that braid lies above the crimp neck.



Slide ferrule A over braid and crimp as close to connector body B as possible.

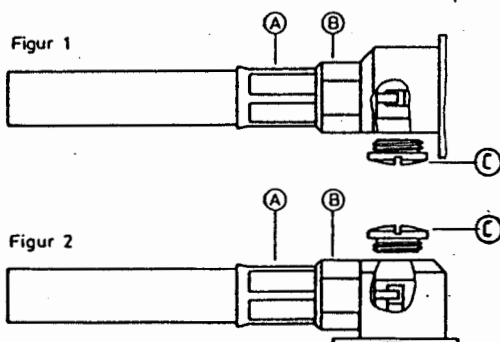
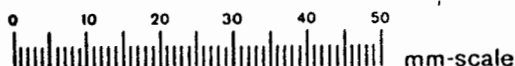


Fig. 1 = straight connector

Fig. 2 = angled connector

Solder inner conductor to contact,
and secure with silver filled epoxy.

Screw on cover C,



SUHNER's skilled staff and specialised equipment are available to carry out complete R.F. lead-assembly on your behalf.
We mount your connectors on cables at economic prices! Please contact our representative for further details of this service.



HUBER + SUHNER Ltd. CH-9100 HERISAU

Switzerland