



# HOW TO TERMINATE CRIMP TYPE F-CONNECTOR CABLE



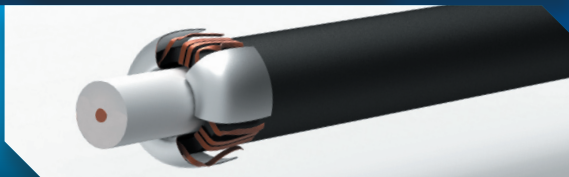
1

Using a cable stripper, carefully remove about 15mm of the black PVC to expose the braid shield.



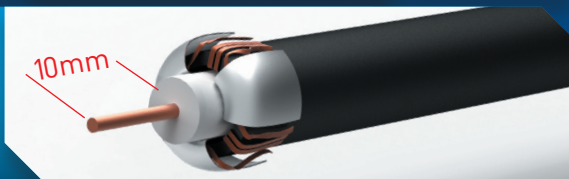
2

Peel back the braid shield layers onto the black PVC to expose the inner white PVC.



3

Again using the cable stripper, carefully remove about 10mm of the inner white PVC to expose the core conductor.



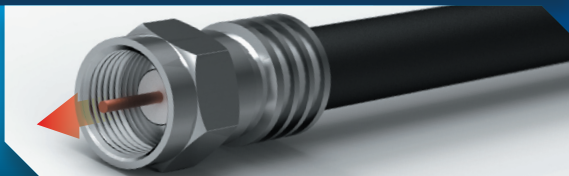
4

Insert and push the core conductor into the inner circle flange of the Crimp Type F-Connector.



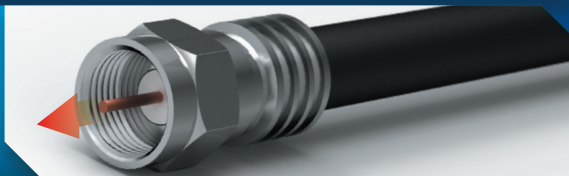
5

Ensure to carefully insert the Type F-Connector inner circle flange between the white PVC and braid shield.



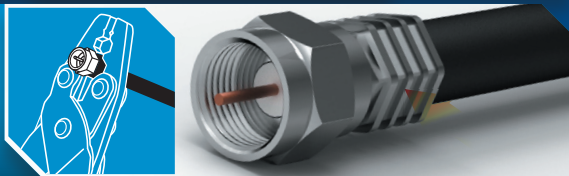
6

Push the cable through the Type F-Connector until the white PVC appears flush with the inner face of the screw well.



7

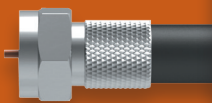
Securely crimp the Type F-Connector to the cable using a crimping tool.



8

For a clean finished cable, remove any excess shield residual with a sharp tool. The exposed core conductor must not protrude past the end of the F-Connector by 3mm.





## HOW TO TERMINATE TWIST-ON TYPE F-CONNECTOR CABLE

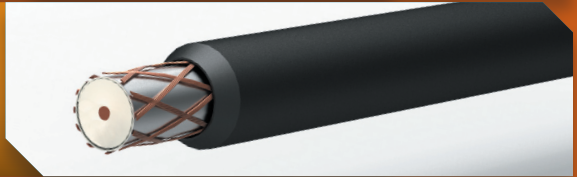
1

Using a cable stripper, carefully remove about 15mm of the black PVC to expose the braid shield.



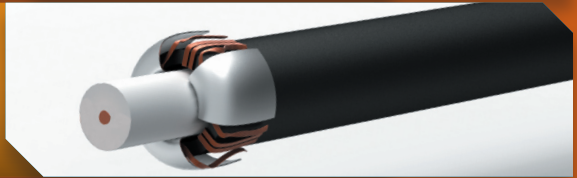
2

With a cutting knife, shave the new end of the black PVC to a 45° angle.



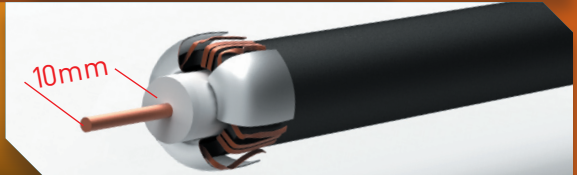
3

Peel back the braid shield layers onto the black PVC to expose the inner white PVC.



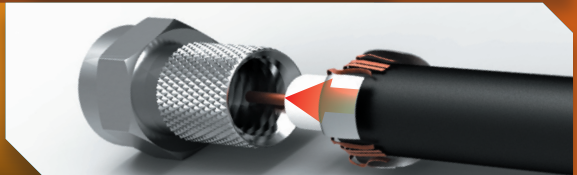
4

Again using the cable stripper, carefully remove about 10mm of the inner white PVC to expose the core conductor.



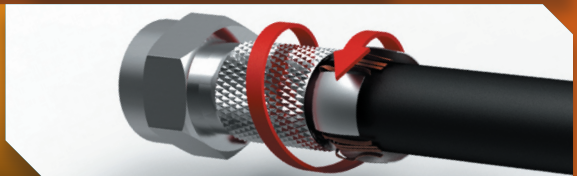
5

Insert and push the core conductor into the Twist-On Type F-Connector.



6

Securely attach by screwing the Type F-Connector onto the cable.



7

Keep screwing the Type F-Connector to the cable until the white PVC appears flush with the inner face of the screw well.

8

For a clean finished cable, remove any excess shield residual with a sharp tool. The exposed core conductor must not protrude past the end of the F-Connector by 3mm.

