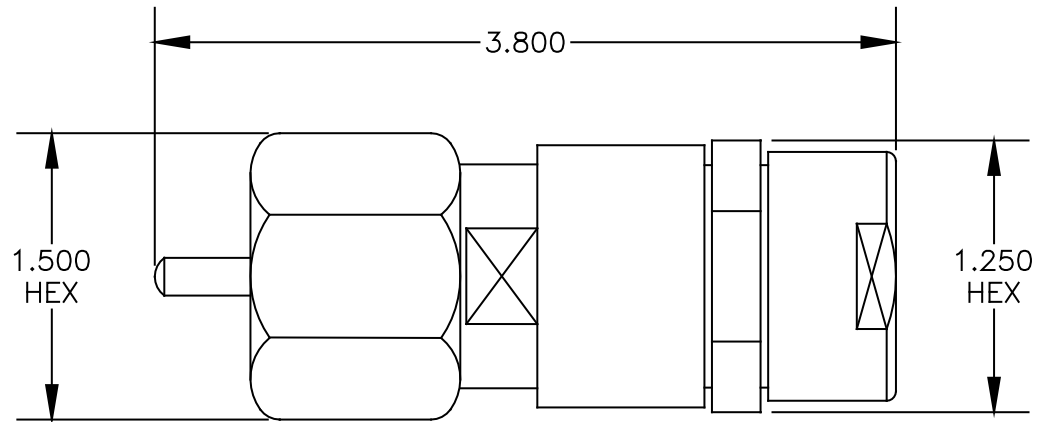


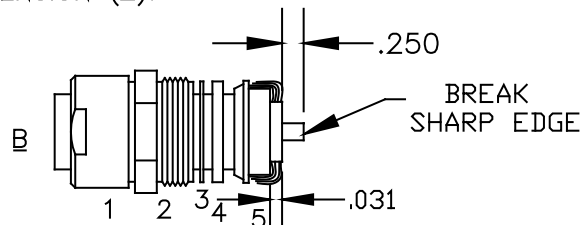
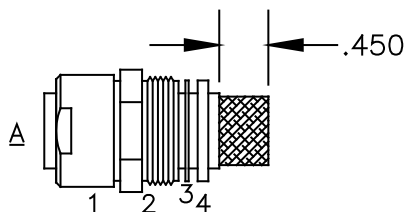
MATERIALS	
BODY	BRASS NICKEL PLATED
CONTACT	SILVER PLATED
INSULATOR	PTFE



ASSEMBLY PROCEDURES

1. SLIDE CLAMP NUT (1), EXTENSION (2), WASHER (3) & GASKET (4) OVER CABLE. STRIP CABLE AS SHOWN IN A. DO NOT NICK BRAID. WHILE CUTTING JACKET COMB OUT BRAID. TAPER END OF BRAID TO PERMIT ASSEMBLY OF BRAID CLAMP (5). SLIDE BRAID CLAMP (5) OVER BRAID & SEAT AGAINST CABLE.
2. FORM BRAID OVER BRAID CLAMP NUT (5). TRIM BRAID BACK TO SHOULDER. CUT DIELECTRIC & CENTER CONDUCTOR TO DIMENSION SHOWN IN B. DO NOT NICK CENTER CONDUCTOR. INSERT #12 ALLEN WRENCH INTO SELF-TAPPING CONTACT. THREAD THE SELF-TAPPING CONTACT ONTO CENTER CONDUCTOR UNTIL IT SEATS AGAINST DIELECTRIC. SCREW CONTACT & CABLE ASSEMBLY INTO INSULATOR IN BODY. TIGHTEN BODY & EXTENSION (2) TOGETHER SECURELY. * THEN TIGHTEN CLAMP NUT (1) TO EXTENSION (2).

* NOTE: RG219 STRAIGHTEN BULGE IN CLAMP NUT (1) & CUT IT SO THAT IT CAN BE CLAMPED TOGETHER TO EXTENSION (2).



PASTERNACK ENTERPRISES, LLC

P.O. BOX 16759, IRVINE, CA 92623
PHONE (949) 261-1920 FAX (949) 261-7451

WEB ADDRESS: www.pasternack.com
E-MAIL ADDRESS: sales@pasternack.com

ESTABLISHED 1972

COAXIAL & FIBER OPTICS

DWG TITLE

PE4323

DES. LC MALE, CLAMP ATTACHMENT FOR RG218 & RG219

SIZE A **FSCM NO. 53919**

CAD FILE 051402

SCALE N/A

127

NOTES:

1. UNLESS OTHERWISE SPECIFIED ALL DIMENSIONS ARE NOMINAL.
2. ALL SPECIFICATIONS ARE SUBJECT TO CHANGE WITHOUT NOTICE AT ANY TIME.