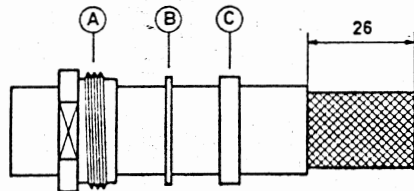


Assembly Instructions

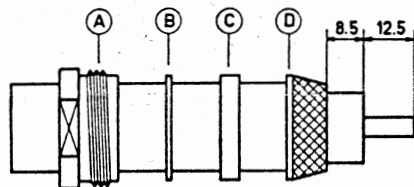
BL 171



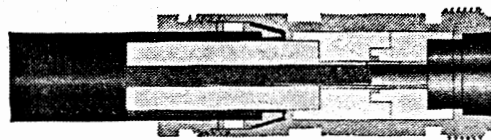
Slide nut A, washer B and gasket C over cable. Remove carefully 26 mm of cable jacket without damaging or opening the braid.

Armoured cable

Slide armour nut instead of nut A over cable. Remove 55,5 mm of armour.



Position clamp D so that its shoulder fits against cable jacket. Fold braid back over clamp D and cut it off in front of the clamp rim. Cut off dielectric even and perpendicular to cable axis, observing the distance of 8,5 mm from the end of the braid. File edge of protruding center conductor.



Insert connector body as much as possible so that it butts tightly. Screw in nut A and tighten it with wrenches size 27 mm. Do not distort cable and connector body.

SUHNER+CO
AG
9100 HERISAU

Cable-, Rubber-, Plastic-Works
Tel. 071 5118 31 Switzerland

CASA

Part-Order: CASA-100x16L_Address.01
Print-Date: 12/01/18

CASA Modular Systems

66 Fitzherbert Street, Petone 5012, Lower Hutt
Ph: 04-9393 777 eMail: sales@casa.co.nz
P.O. Box 36-020
WELLINGTON
New Zealand

Phone (64-4) 5687 277 FAX (64-4) 5685 161
E-Mail - casa@actrix.gen.nz