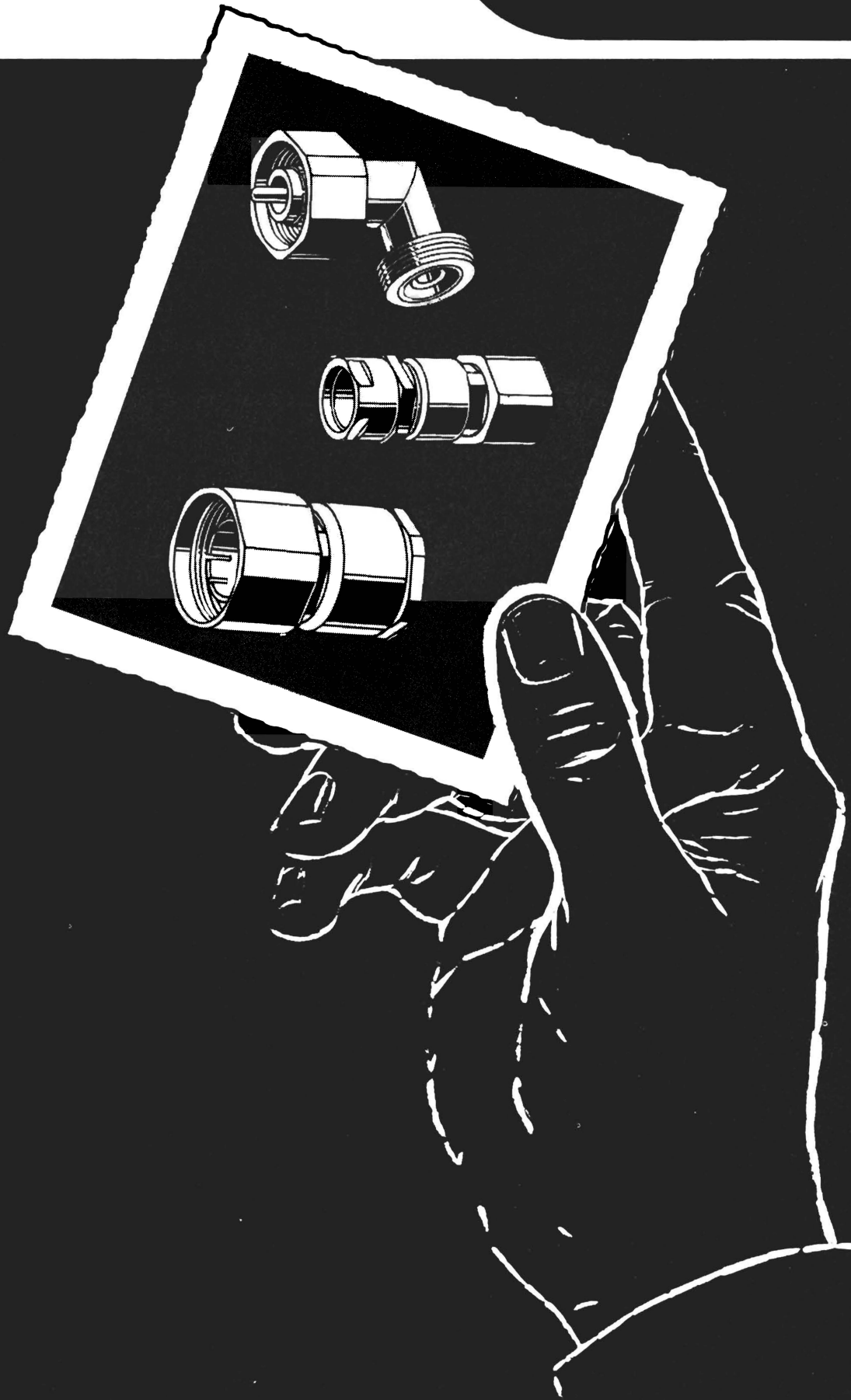


TYPE LC - LT

KINGS

ELECTRONICS

K-GRIP IS AVAILABLE FOR THIS SERIES. SEE PAGES 106-111.





LC SERIES

MILITARY TYPE	KINGS NUMBER	DESCRIPTION	CABLE SIZE	ENGINEERING DATA	DIELECTRIC MATERIAL	KINGS NUMBER	MILITARY TYPE
UG-154/U	KV-51-02	Plug	RG-17, 18, 218, 219/U			KL-91-05	UG-219/U
UG-154A/U	KV-54-04	Plug	RG-17, 18, 218, 219/U	See Notes 1 & 2		KV-31-01	UG-286/U
UG-155/U	KV-91-02	Adapter		F-F—Notes 3 & 12	Polyethylene	KV-51-01	UG-156/U
UG-156/U	KV-51-01	Plug	RG-19, 20, 220, 221/U	See Notes 1 & 2		KV-51-02	UG-154/U
UG-156A/U	KV-54-07	Plug	RG-19, 20, 220, 221/U			KV-51-04	UG-1189/U
UG-157/U	KV-91-01	Adapter		F-F—Notes 8 & 12	Polyethylene	KV-51-05	UG-1258/U
UG-208/U	KV-91-04	Adapter, Angle		F-M—Notes 3, 4 & 12	Polyethylene	KV-54-04	UG-154A/U
UG-215/U	KV-91-03	Adapter		F-F—Note 3	Polyethylene	KV-54-07	UG-156A/U
UG-216/U	KV-91-05	Adapter, Angle		F-M—Notes 3 & 4	Polyethylene	KV-71-01	UG-352/U
UG-216B/U	KV-97-01	Adapter, Angle		F-M—Notes 4 & 7	Polyethylene	KV-74-01	UG-352A/U
UG-219/U	KL-91-05	Adapter, Angle		F-M—Notes 5, 8 & 12	Polyethylene	KV-77-01	UG-352B/U
UG-219B/U	KV-97-02	Adapter, Angle		F-M—Notes 5, 9 & 12	Polyethylene	KV-91-01	UG-157/U
UG-220/U	KV-92-08	Adapter		F-M—Notes 3, 5 & 12	Polyethylene	KV-91-02	UG-155/U
UG-240/U	KV-92-09	Adapter		F-F—Notes 6 & 12	Polyethylene	KV-91-03	UG-215/U
UG-286/U	KV-31-01	Jack	RG-82/U	See Note 3	Teflon	KV-91-04	UG-208/U
UG-287/U	KV-91-09	Adapter		F-F—Note 3	Polyethylene	KV-91-05	UG-216/U
UG-287B/U	KV-97-04	Adapter		F-F—Note 7	Polyethylene	KV-91-09	UG-287/U
UG-352/U	KV-71-01	Receptacle		See Note 3	Teflon	KV-92-08	UG-220/U
UG-352A/U	KV-74-01	Receptacle		See Note 3	Rexolite	KV-92-09	UG-240/U
UG-352B/U	KV-77-01	Receptacle		See Note 7	Rexolite	KV-97-01	UG-216B/U
UG-1189/U	KV-51-04	Plug	RG-189/U 7/8" Styroflexable	See Note 4	Polyethylene	KV-97-02	UG-219B/U
UG-1258/U	KV-51-05	Plug	RG-17, 218/U			KV-97-04	UG-287B/U

LT SERIES

MILITARY TYPE	KINGS NUMBER	DESCRIPTION	CABLE SIZE	ENGINEERING DATA	DIELECTRIC MATERIAL	KINGS NUMBER	MILITARY TYPE
UG-532/U	KV-52-01	Plug	RG-117, 118, 211, 228/U			KV-52-01	UG-532/U
UG-532A/U	KV-54-06	Plug	RG-117, 118, 211, 228/U			KV-54-06	UG-532A/U
UG-533/U	KV-91-15	Adapter		F-F—Note 10	Teflon	KV-91-15	UG-533/U
UG-533B/U	KV-97-03	Adapter		F-F—Note 11	Teflon	KV-97-03	UG-533B/U



LC ADAPTERS TO OTHER SERIES

SERIES	CONTACTS	MILITARY TYPE	KINGS NUMBER	ENGINEERING DATA	DIELECTRIC MATERIAL		KINGS NUMBER	MILITARY TYPE
LC to C	F-F	UG-1287/U	KV-91-18	Note 7—Bulkhead Mtg.	Teflon		KH-91-03	UG-217/U
LC to C	F-F	UG-1288/U	KV-91-19	Note 7	Teflon		KH-92-01	UG-497/U
LC to HN	F-F	UG-217/U	KH-91-03	Note 3	Polyethylene		KH-94-02	UG-497A/U
LC to HN	F-F	UG-217A/U	KH-94-03	Note 7	Polyethylene		KH-94-03	UG-217A/U
LC to HN	F-F	UG-259/U	KV-91-08	Note 3—Panel Mtg.	Polyethylene		KV-91-06	UG-218/U
LC to HN	F-F	UG-259A/U	KV-94-06	Note 7—Panel Mtg.	Polyethylene		KV-91-07	UG-270/U
LC to HN	F-F-F	UG-327A/U	KV-94-03	Note 7—Tee	Polyethylene		KV-91-08	UG-259/U
LC to HN	M-F	UG-218/U	KV-91-06	Note 4—Angle	Polyethylene		KV-91-13	UG-271/U
LC to HN	M-F	UG-218A/U	KV-94-02	Note 4—Angle	Polyethylene		KV-91-16	UG-586/U
LC to HN	M-F	UG-497/U	KH-92-01	Note 4	Polyethylene		KV-91-17	UG-587/U
LC to HN	M-F	UG-497A/U	KH-94-02	Note 4	Polyethylene		KV-91-18	UG-1287/U
LC to LT	F-F	UG-586/U	KV-91-16	LC End Note 3 LT End Notes 10 & 11	Teflon		KV-91-19	UG-1288/U
LC to LT	F-F	UG-587/U	KV-91-17	LC End Note 3—Panel Mtg. LT End Notes 10 & 11	Teflon		KV-94-01	UG-999A/U
LC to N	F-F	UG-270/U	KV-91-07	Note 3	Polyethylene		KV-94-02	UG-218A/U
LC to N	F-F	UG-270A/U	KV-94-04	Note 7	Polyethylene		KV-94-03	UG-327A/U
LC to N	F-F	UG-271/U	KV-91-13	Note 3—Panel Mtg.	Polyethylene		KV-94-04	UG-270A/U
LC to N	F-F	UG-271A/U	KV-94-05	Note 7—Panel Mtg.	Polyethylene		KV-94-05	UG-271A/U
LC to N	M-F	UG-999A/U	KV-94-01	Note 4	Teflon		KV-94-06	UG-259A/U

LT ADAPTERS TO OTHER SERIES

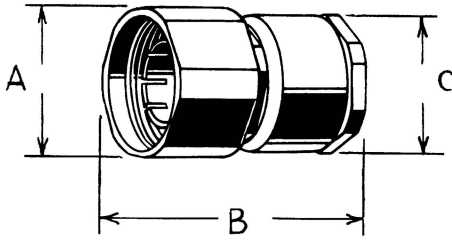
SERIES	CONTACTS	MILITARY TYPE	KINGS NUMBER	ENGINEERING DATA	DIELECTRIC MATERIAL		KINGS NUMBER	MILITARY TYPE
LT to LC	F-F	UG-586/U	KV-91-16	LT End Notes 10 & 11 LC End Note 3	Teflon		KV-91-16	UG-586/U
LT to LC	F-F	UG-587/U	KV-91-17	LT End Notes 10 & 11 LC End Note 3—Panel Mtg.	Teflon		KV-91-17	UG-587/U

NOTES:

1. For counterboring tools TL-325/U and TL-326/U see drawing RE49F387.
2. For spanner wrenches TL-322/U and TL-323/U see drawing RE49F386.
3. Female contacts mate with RG-17/U, RG-18/U or equivalent male contacts.
4. Male contacts equivalent to RG-17/U inner conductors.
5. Male contacts equivalent to RG-19/U inner conductors.
6. Female contacts mate with RG-17/U, RG-19/U or equivalent male contacts.
7. Female contacts mate with RG-218/U, RG-219/U or equivalent male contacts.
8. Female contacts mate with RG-19/U, RG-20/U or equivalent male contacts.
9. Female contacts mate with RG-220/U, RG-221/U or equivalent male contacts.
10. Female contacts mate with RG-117/U, RG-118/U or equivalent male contacts.
11. Female contacts mate with RG-211/U, RG-228/U or equivalent male contacts.
12. These connectors are counterbored for high voltage application.

SEX OF CONTACTS IS INDICATED BY LETTERS "F" AND "M"

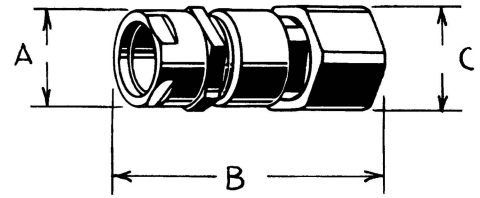
ASTERISKS (*) ON FOLLOWING PAGES INDICATE ILLUSTRATED CONNECTORS



PLUGS -LC

	A	B	C	TECH. DATA
UG-1189/U	1 5/8 D.	2 13/32	1 5/16	NOTE 1
UG-1258/U	1 5/8 D.	2 3/16	1 5/16	

NOTE 1: Includes insulator and center contact

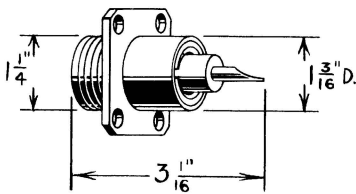


PLUGS -LC

	A	B	C
UG-154/U	1 5/8 D.	3 13/64	1 5/8 D.
UG-154 A/U	1 5/16 D.	3 13/32	1 5/8 D.
* UG-156/U	2 D.	3 11/64	2 3/32 D.
UG-156 A/U	2 D.	3 11/64	2 3/32 D.

PLUGS-LT

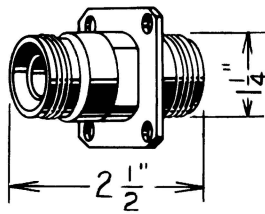
* UG-532/U	1 5/8 D.	3 3/32	1 5/8
UG-532A/U	1 5/8 D.	3 3/32	1 5/8



RECEPTACLE -LC

*UG-352 A/U
UG-352 B/U

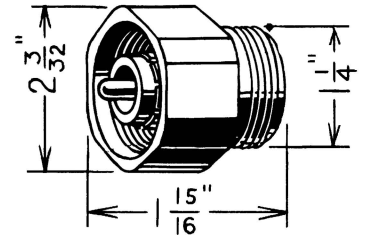
See Mounting Diagram #1



ADAPTER -LC

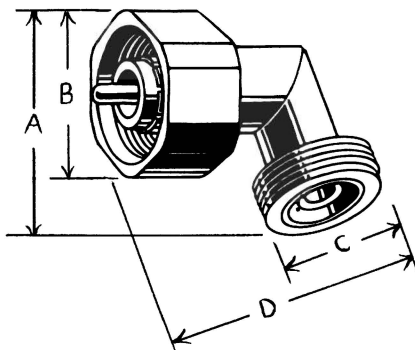
*UG-287/U
UG-287 B/U

See Mounting Diagram #1



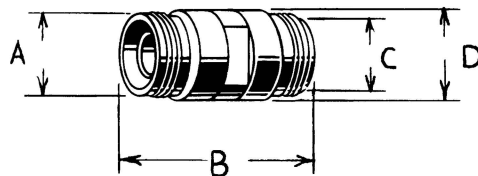
ADAPTER -LC

UG-220/U



ADAPTERS, ANGLE -LC

	A	B	C	D
UG-208/U	2 19/32	1 5/8 D.	1 1/4 D.	2 15/64
UG-216/U	2 19/32	1 5/8 D.	1 1/4 D.	2 11/32
UG-216B/U	2 19/32	1 5/8 D.	1 1/4 D.	2 15/64
* UG-219/U	2 59/64	2 3/32 D.	1 3/4 D.	3 31/64
UG-219B/U	2 59/64	2 3/32 D.	1 3/4 D.	3 1/2



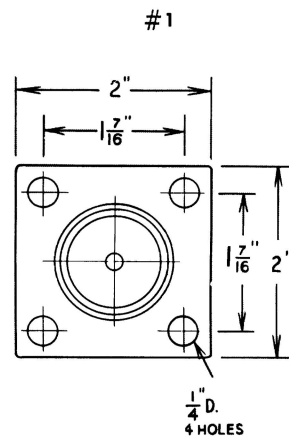
ADAPTERS -LC

	A	B	C	D
UG-155/U	1 1/4 D.	2 1/4	1 1/4 D.	1 5/8 D.
UG-157/U	1 3/4 D.	2 1/2	1 3/4 D.	2 D.
* UG-215/U	1 1/4 D.	2 1/2	1 1/4 D.	1 3/32 D.
UG-240/U	1 1/4 D.	2 1/4	1 3/4 D.	

ADAPTERS -LT

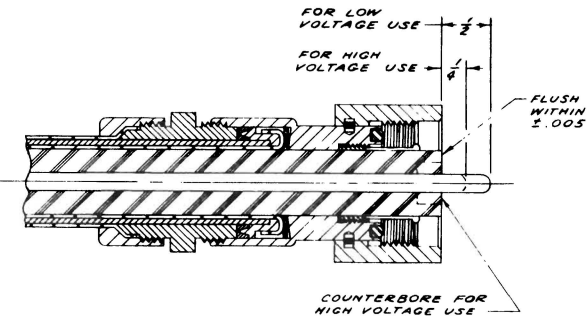
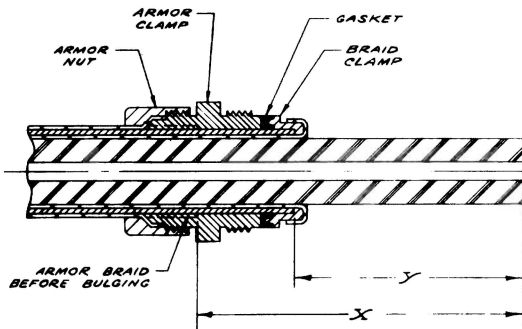
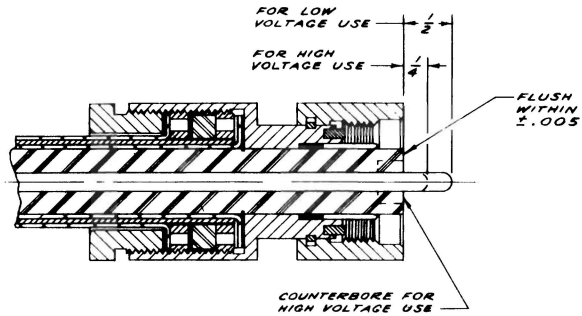
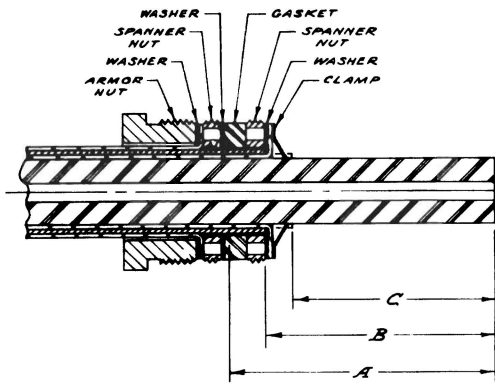
UG-533/U	1 1/4 D.	2 1/2	1 1/4 D.	1 3/32 D.
UG-533B/U	1 1/4 D.	2 1/2	1 1/4 D.	1 1/4 D.

MOUNTING DIAGRAM #1





CABLING INSTRUCTIONS



CONNECTOR	A	B	C	C'BORE TOOL
UG-154/U	$2\frac{3}{4}$	$2\frac{3}{8}$	$2\frac{1}{8}$	TL-326/U
UG-156/U, UG-156 A/U,	$2\frac{3}{4}$	$2\frac{3}{8}$	$2\frac{1}{8}$	TL-325/U
UG-532/U, UG-532 A/U	$2\frac{15}{16}$	$2\frac{1}{2}$	$2\frac{1}{4}$	

CONNECTOR	X	Y	C'BORE TOOL
UG-154 A/U	$3\frac{11}{32}$	$2\frac{3}{8}$	TL-326/U

FOR K-GRIP CABLING INSTRUCTIONS, SEE PAGE 111