

# CONNETTORI COASSIALI MCX COAXIAL CONNECTORS

Connettore femmina per C.S. per montaggio superficiale  
Conforme a norme CECC 22220  
Impedenza : 50Ω

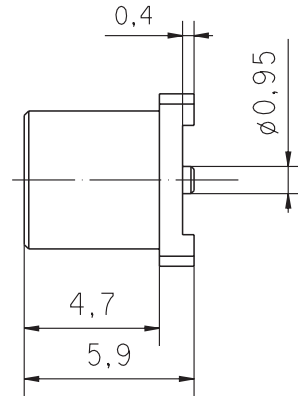
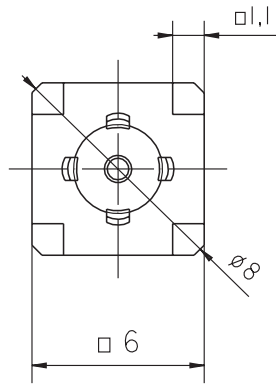
Materiali e finiture :

- Corpo : ottone dorato a flash
- Contatto centrale : rame al berillio dorato 1,3μ
- Isolatore : PTFE

Jack receptacle for PCBs. for surface mounting  
According to CECC 22220  
Impedance : 50Ω

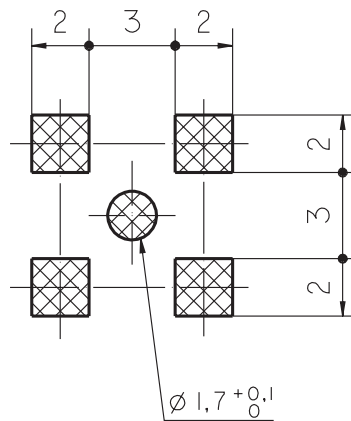
Material and finishes :

- Body : brass - gold plated flash
- Inner contact : beryllium copper - gold plated 1,3μ
- Insulator : PTFE



Part. nr.  
**350.073.511.T1**

Piazzole di saldatura  
Solder pads



COMPEL RESERVES THE RIGHT TO MODIFY  
ITS SPECIFICATIONS WITHOUT PRIOR  
NOTIFICATION AND DISTRIBUTION.

LE CARATTERISTICHE ELENcate POSSONO ESSERE  
SOGGETTE A MODIFICHE SENZA ALCUN  
OBBLIGO DI PREAVVISO E DISTRIBUZIONE.

DC..073.511.T1

ED.	DATA/ DATE	FIRMA / SIGN.	ED.	DATA/ DATE	FIRMA / SIGN.	ED.	DATA/ DATE	FIRMA / SIGN.
01	30.11.99	Gb Cv						