

CASA Type #: 11PAL-75-4-RG59-EF125-YB

Suitable cables include industry standard 75 Ohm
solid centre conductor types with 4mm solid or foamed
dielectric with braided screens (with or without foil-wraps)

RG-59A/U

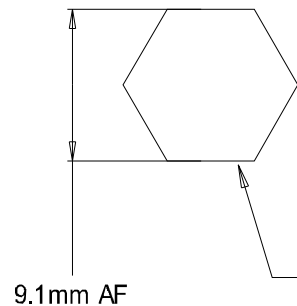
RG-59B/U

other RG-59 types subject to testing.

DRAFT

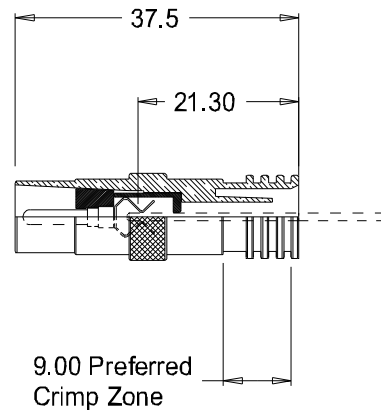
Overall
Ø 11.00

Max Cable
Ø 7.60

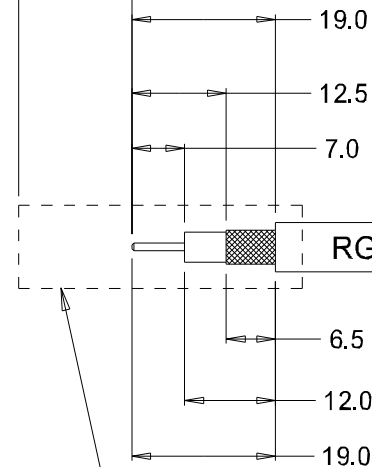


9.1mm AF

Recommended Hex Crimp Dies
X.X mm AF (nominally 8~9mm long)



+ 15mm (cut-cable) add-on
for fitted connector



Connector Outline

Optional Heat-Shrink Sleeve
13mm ID coated or un-coated
nominally 30~50mm long

RG-59 Types 75 Ohm Cables 6~7mm (nominal) OD

MATERIAL NA
ALLOY NA
EST. AREA NA mm
EST. WEIGHT NA kg/m
EST. PERIPHERY EXT: NA mm TOT: NA mm
TOLERANCE 0.00mm ±0.1mm 00.0mm ±0.25mm 0000mm ±0.5mm 0-600mm ±0.1mm > 600mm ±0.5mm
BS1474:1987 APPLIES UNLESS OTHERWISE SPECIFIED
JOB No. 3000

<p>Petone 5012, WELLINGTON, NEW ZEALAND TELEPHONE : (64-4) 9393 777 WWW Address: www.casa.co.nz</p>	CUSTOMER : CASA Modular Systems		SIZE	DRAWING Reference No.	ISSUE
	DESCRIPTION : Semi-Crimp PAL Plugs & Sockets from YuBright etc.		A4	11PAL-EF125RG59 A	
DRAWN : AWD	DATE : 27/05/19	APPROVED : ?	DWG. SCALE : 1:1	© COPYRIGHT : CASA Modular Systems ALL RIGHTS RESERVED	