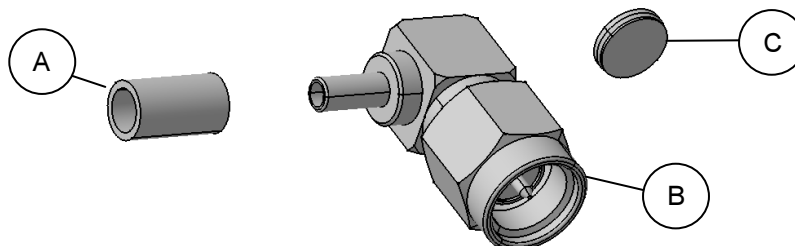


# Assembly instruction Series SMA 0000178742

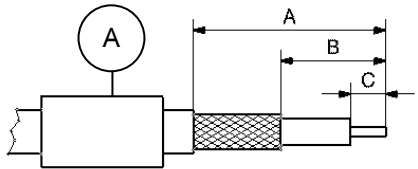
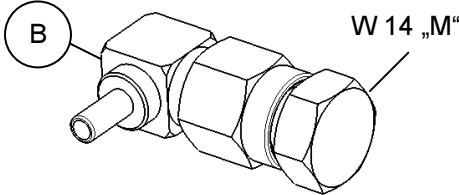
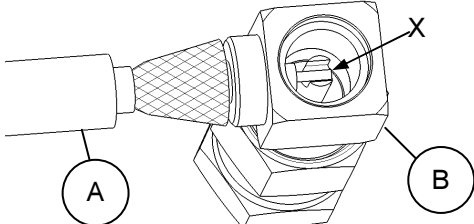
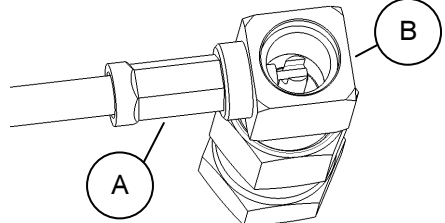
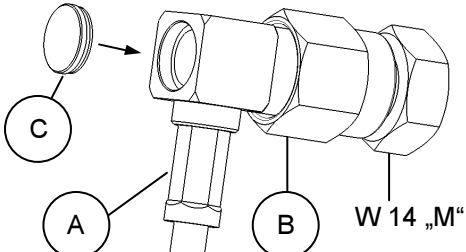


Connector type (e.g.):	16 SMA-50-1-1, 16 SMA-50-2-105, 16 SMA-50-3-105	Inner conductor contact:	Soldered
Suitable cables (e.g.):	RG 178/U, K 02252D, RG 58 C/U	Outer conductor contact:	Crimped

## Parts list connector:



## Assembly steps:

Picture				Process	Feature / Check	Tools required	
Connector type		A	B	C			
16 SMA-50-1-.. , 16 SMA-50-2-..		11	6	2			
16 SMA-50-3-..		13.5	6	3			
				Slide ferrule A onto cable. Prepare cable according to diagram.	Do not damage braid, dielectric and inner conductor of cable.	Stanley blade scissors	
				Screw locator tool W14 "M" onto connector body B.		Locator tool W14 "M"	
				Slide prepared cable into connector body B until inner conductor of cable is flush at X.	Ensure that braid lies above crimp neck		
				Slide ferrule A over braid and crimp. Solder inner conductor to cable	Crimp as close to connector body B as possible	Connector type	Crimp tool
						16 SMA-50-1-...	Cavity A
						16 SMA-50-2-...	Cavity B
						16 SMA-50-3-...	Cavity B
				Place cover C on rear aperture of body B. Press cover C into body B.		Small press or a small bench vice.	

The cable assembly of R.F. connectors can only be done by well trained assembly stuff and suitable assembly equipment. Huber+Suhr's skilled stuff and specialised equipment are available to carry out complete R.F. lead-assembly on your behalf. We mount your connectors on cables at economic prices! Please contact our representative for further details of this service.

Revision	E
Date	13.04.06
Initiator	4186/MAP