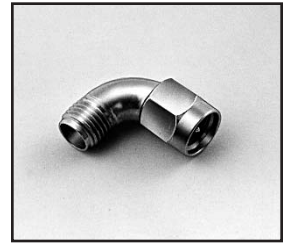
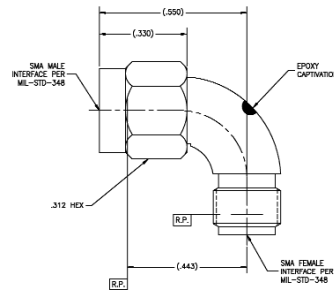


Tensolite Part No.	Max. VSWR DC - 18.0 GHz
5490	1.06 + .005 fGHz

Add suffix CC to Part No. for captivated contact.

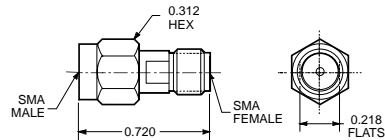
Radius Right Angle Male to Female Adapter



Tensolite Part No.	Max. VSWR DC - 18.0 GHz
5299CC	1.05 + .005 fGHz

Center conductor is captivated.

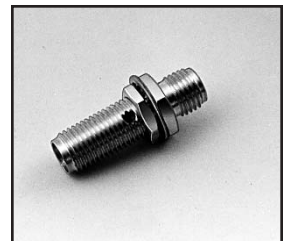
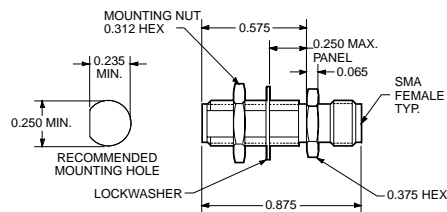
Male to Female Adapter (Connector Server)



Tensolite Part No.	Max. VSWR DC - 18.0 GHz
5170CC	1.05 + .005 fGHz

Center conductor is captivated.

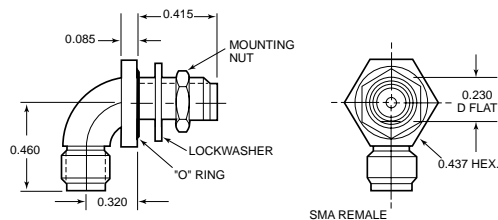
Female to Female Adapter Bulkhead Feedthrough



Tensolite Part No.	Max. VSWR DC - 18.0 GHz
5135	1.06 + .005 fGHz

Add suffix CC to Part No. for captivated contact.

Radius Right Angle Female to Female Adapter Bulkhead Feedthrough



Standard units are gold plated. Add suffix SF to Part Number for stainless steel finish.