

## General Description

Delta TW34 series connectors are economical, medium-size twinaxial connectors with  $\frac{3}{4}$ "-20 threaded coupling. Their characteristic 95  $\Omega$  impedance makes them ideal for use with RG-22/U and similar Belden, IBM, and other twinaxial cable commonly used in LAN installations.

Plugs in TW34 series contain two male contacts, and jacks contain two female contacts, with mating polarization provided by a key in the jack which engages a keyway in the plug. The insulators of both plugs and jacks are marked to indicate location of the bare-copper wire of the cable conductor pair.

Delta TW34 connectors are designed and manufactured to meet the requirements of MIL-C-3655.

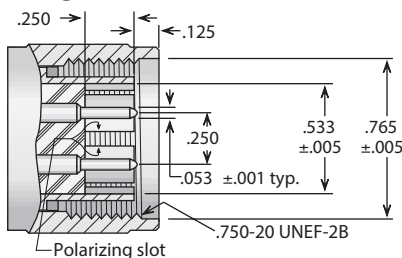
## TW34 Configurations

Cable Plugs.....158  
Cable Jacks .....159  
Bulkhead Jack Receptacles .....159

Panel Jack Receptacles (square flange) .....160  
In-Series Adapters .....160

## TW34 Specifications\*

### Plug Interface\*\*



#### Electrical:

Nominal Impedance: 95 ohms.

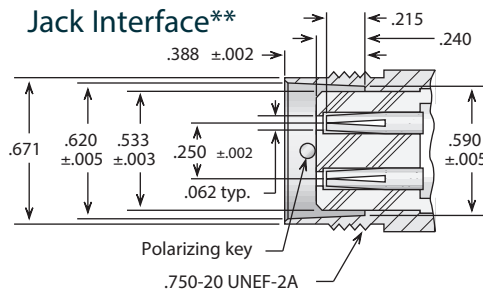
Frequency Range: DC-200 MHz (Optimal),  
DC-500 MHz (Useable).

Voltage Rating: 500 volts RMS.

Dielectric Withstanding Voltage: 1,500 volts RMS.

Insulation Resistance: 5,000 megohms.

### Jack Interface\*\*



\*These specifications are typical and may not apply to all connectors.

Detailed specifications for individual connectors are available on request.

\*\*Some proportions altered to illustrate detail.

All other specifications are in accordance with the latest issues of MIL-PRF-39012, MIL-C-3655, or other applicable MIL specifications.

#### Materials/Finishes:

Insulators: Teflon per ASTM D1710.

Male Contacts: Brass per ASTM B16.

Female Contacts: Beryllium Copper per ASTM B196.

Contact Plating : Silver per ASTM B700, or Gold per MIL-DTL-45204.

Gaskets: Silicone rubber per ZZ-R-765, Class II, Grade 50.

Other Metal Parts: Brass per ASTM B16, plated:

Silver per ASTM B700, or Nickel per AMS-QQ-N-290.

## Straight & Right Angle Plugs - Clamp Type For Flexible Cable

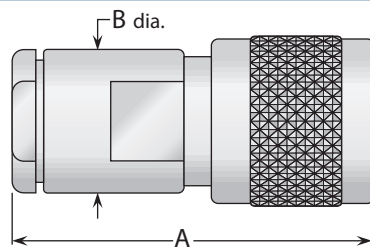


Figure 1

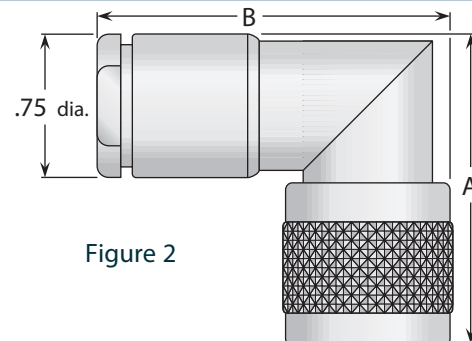
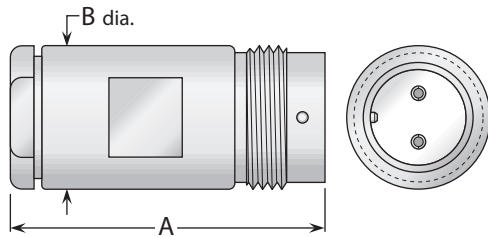


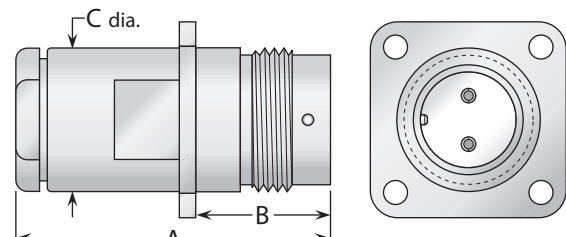
Figure 2

Cable Group	Figure	Dimensions		Plating		Delta P/N	Assembly Procedure/Trim Code
		A	B	Body	Contact		
27	1	1.88	.750	Nickel	Silver	2601099N000-000	***
28	1	1.88	.750	Nickel	Silver	UG-421B/U	***
28	2	1.56	1.88	Nickel	Silver	2604070N000-000	***
29	1	1.88	.750	Nickel	Silver	2601201N000-000	***
29	2	1.56	1.88	Nickel	Silver	2604201N000-000	***

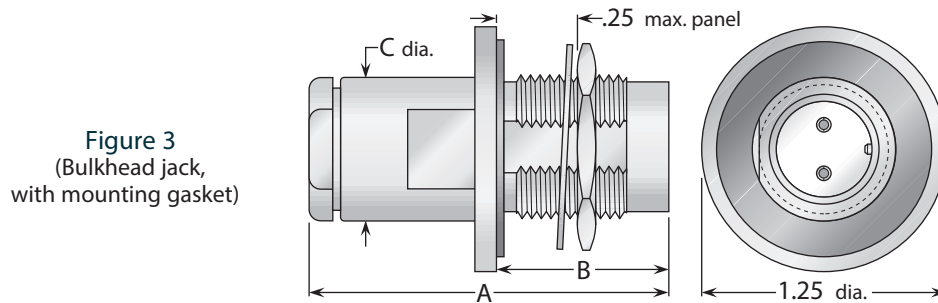
## Cable Jacks



**Figure 1**  
(Straight jack)



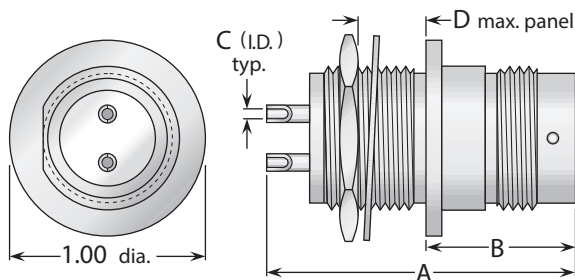
**Figure 2**  
(Panel jack)



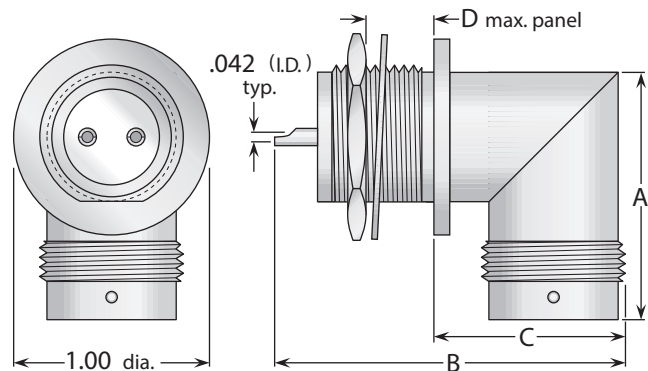
**Figure 3**  
(Bulkhead jack,  
with mounting gasket)

Cable Group	Fig.	Dimensions			Mounting Figure	Plating		Delta P/N	Assembly Procedure/Trim Code
		A	B	C		Body	Contact		
28	1	1.59	.750	—	—	Nickel	Silver	2608070N000-000	***
28	2	1.75	.690	.750	33	Nickel	Silver	UG-423B/U	***
28	3	1.75	.880	.750	51	Nickel	Silver	2616070N511-000	***
29	2	1.75	.690	.750	33	Nickel	Silver	2611201N331-000	***
29	3	1.75	.880	.750	51	Nickel	Silver	2616201N511-000	***

## Bulkhead Receptacles - Solder Pot Contact



**Figure 1**  
(Bulkhead jack receptacle, front mount)



**Figure 2**  
(Right angle bulkhead jack receptacle)

Figure	Dimensions				Mounting Figure	Plating		Delta P/N
	A	B	C	D		Body	Contact	
1	1.58	.785	.042	.250	51	Nickel	Silver (C)	2620000N511-000
2	1.53	1.75	.970	.250	51	Nickel	Silver (C)	2622000N511-000

- See page 209 for cable groups.
- \*\*\*Contact factory for cable assembly instructions.
- See page 208 for mounting dimensions.
- See page 6 for alternate body plating information.

## Panel Jack Receptacle - Solder Pot Contact

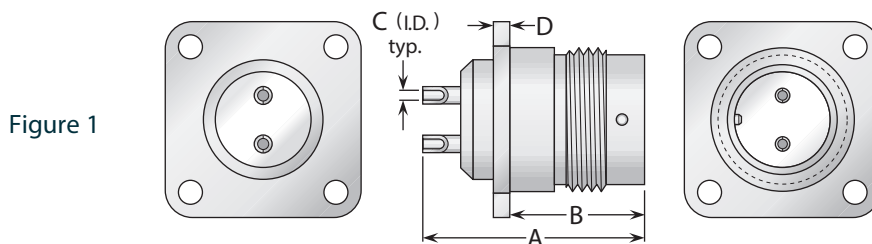
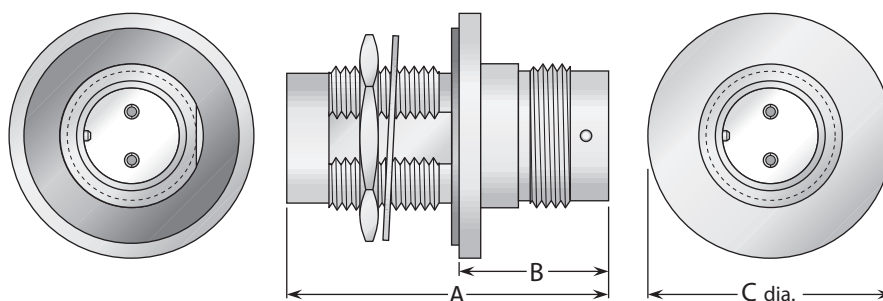


Figure	Dimensions				Mounting Figure	Plating		Delta P/N
	A	B	C	D		Body	Contact	
1	1.18	.710	.059	.080	33	Nickel	Silver (C)	UG-422/U

## Bulkhead Jack-Jack Adapter (Connects Two Plugs)



Dimensions			Max. Panel	Mounting Figure	Plating		Delta P/N
A	B	C			Body	Contact	
1.67	.880	1.25	.250	51	Nickel	Silver (C)	UG-493A/U

## Straight & Right Angle Adapters

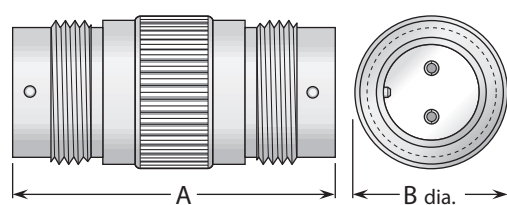


Figure 1  
(Straight jack-jack; connects two plugs)

Figure 2  
(Right angle jack-plug; connects one plug and one jack)

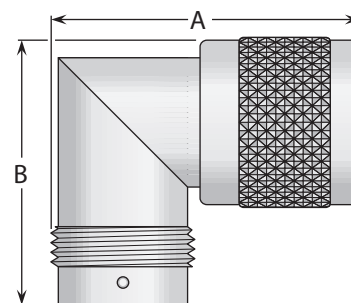


Figure	Dimensions		Plating		Delta P/N
	A	B	Body	Contact	
1	1.67	.750	Nickel	Silver (C)	2626000N000-000
2	1.56	1.38	Nickel	Silver (C)	UG-981/U

- See page 208 for mounting dimensions.
- (C) in contact plating column indicates captive contact.
- See page 6 for alternate body plating information.