

Tools and materials required:

Stanley blade

Scissors

Crimp tool (see table below)

Straight connectors for flexible cable

Cable entry: SUHNER Full-Crimp

Connector types: (e.g.)

11UHF-0-3-17c

21UHF-0-3-1c

11UHF-0-4-14c

21UHF-0-4-1c

11UHF-0-7-21c

21UHF-0-7-6c

11UHF-0-7-17c

21UHF-0-7-2c

This connector
is supplied
in 3 parts

Suitable cables e.g.:

Centre contact:

Braid:

Crimp tool:

RG 58 C/U

cavity 2

cavity B

2B (orange)

RG 59 B/U

cavity 2

cavity C

2C (yellow)

RG 11 A/U

cavity 2

cavity D

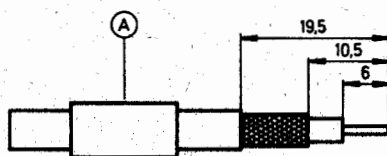
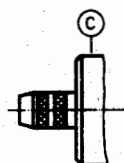
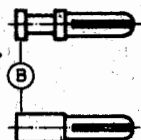
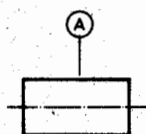
2D

RG 213/U

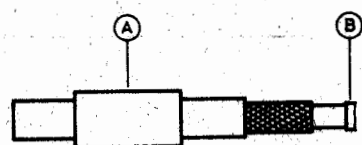
cavity 3

cavity D

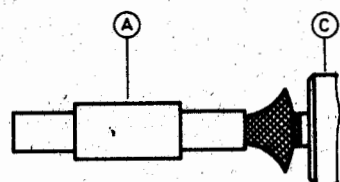
3D (violett)



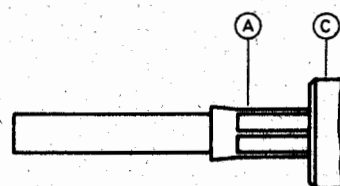
Slide ferrule A onto cable.
Prepare cable according to diagram.
CAUTION: Do not damage braid and inner conductor
of cable!



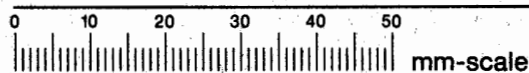
Push contact B over inner conductor of cable
to abut cable dielectric and crimp.



Splay out braid and insert cable in connector body C.
Ensure that braid lies above the crimp neck.



Slide ferrule A over braid and crimp as close
to connector body C as possible.



SUHNER's skilled staff and specialised equipment are available to carry out complete R. F. lead-assembly on your behalf.
We mount your connectors on cables at economic prices! Please contact our representative for further details of this service.



HUBER+SUHNER LTD.



modular systems

P.O. Box 38-828,
PETONE, Wellington,
New Zealand.
PHONE: (64-4) 5687 277
FAX: (64-4) 5685 161



seite