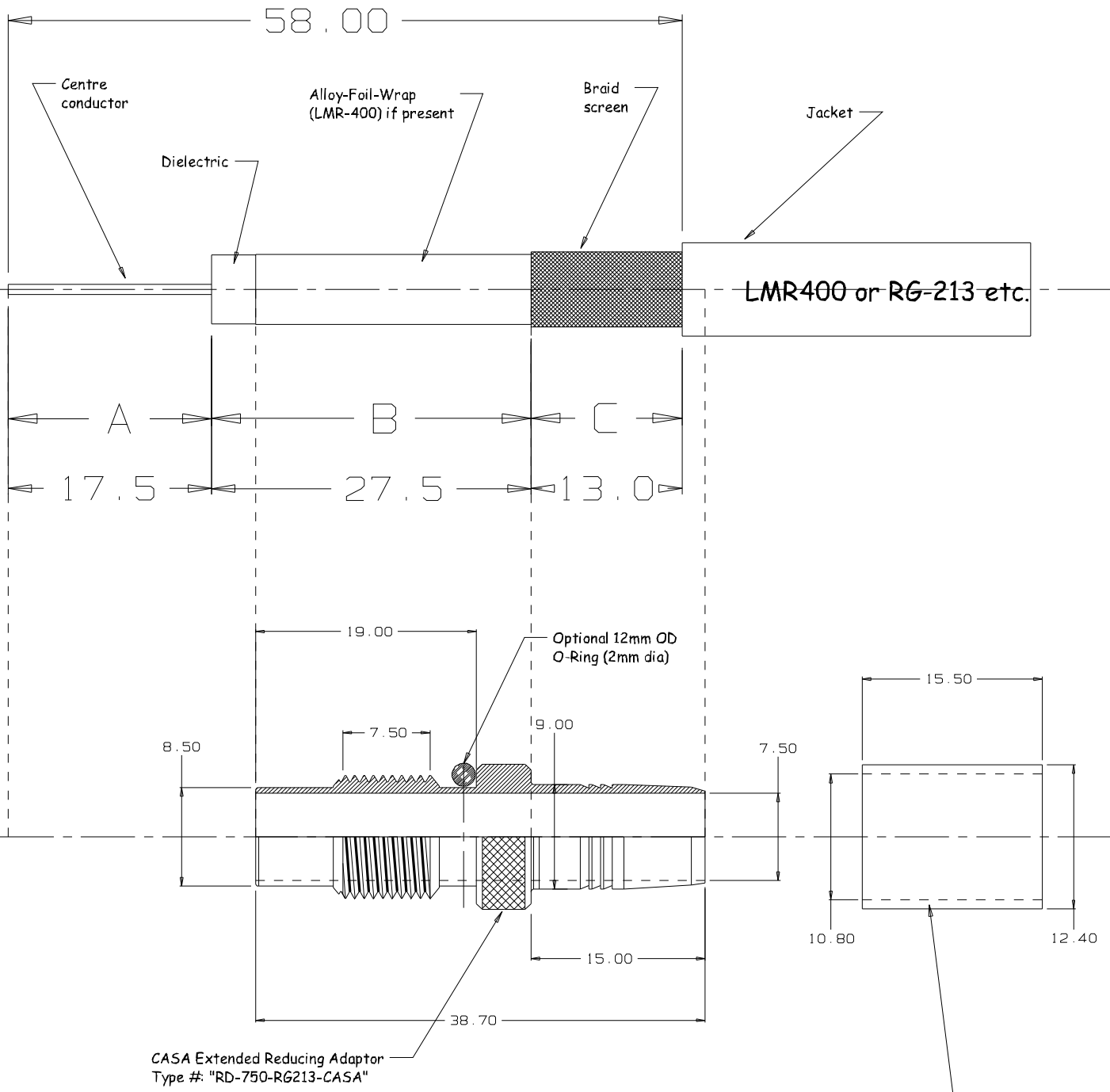


CASA's range of Crimpable Adaptors for UHF PL-259 (Mil-standard) plugs may be used with new PL-259 or retrofitted to existing connectors to give a much improved performance and reliability. A suitable industry standard crimp-tool is required.

Note - Cable preparation details for LMR400, RG-213/U, RG-11/U, RG-8/U and variants (enquire to CASA for other cable options etc).



Optional Crimp Ferrules - as/when available

CF-124x108X155-CU/NI Crimp Ferrule for single-screened RG213 + LMR400 and variants

use CF-124x115X155-CU/NI ferrule for double screened cables RG-214 etc.

Crimp-Tool = 76Z-0-7-14 (3.3/10.7mm 3D Violet) or 10.7mm HEX AF = 0.421"

Material:
Body & Ferrule = Brass/Copper Alloy
Insulator = As supplied with PL259 connector

Finish:
Body = Silver Plate (as required)
Pin-Contact = As supplied with PL259 connector
Ferrule = Nickel Plate

CASA Modular Systems
LOWER HUTT, WELLINGTON, NEW ZEALAND
TELEPHONE : (64-4) 9393 777
www.casa.co.nz
E-MAIL : sales@casa.co.nz

CUSTOMER : **CASA Modular Systems**
DESCRIPTION : **PL259 Reducing Adaptor for RG-213 or LMR400 etc.**
DRAWN : **AWD** DATE : APPROVED : **?** DWG. SCALE : **1:1**

SIZE **A4** DRAWING Reference No. **RD-750-RG213** ISSUE **A**
COPYRIGHT : CASA Modular Systems
ALL RIGHTS RESERVED

JOB No.
XXXX