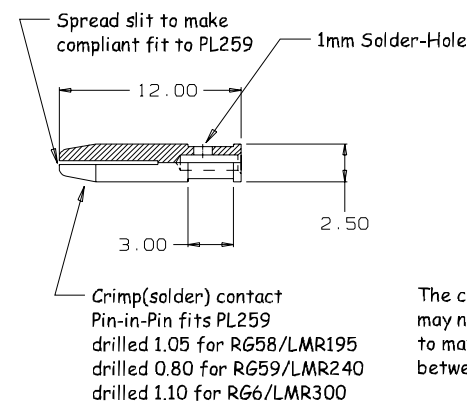
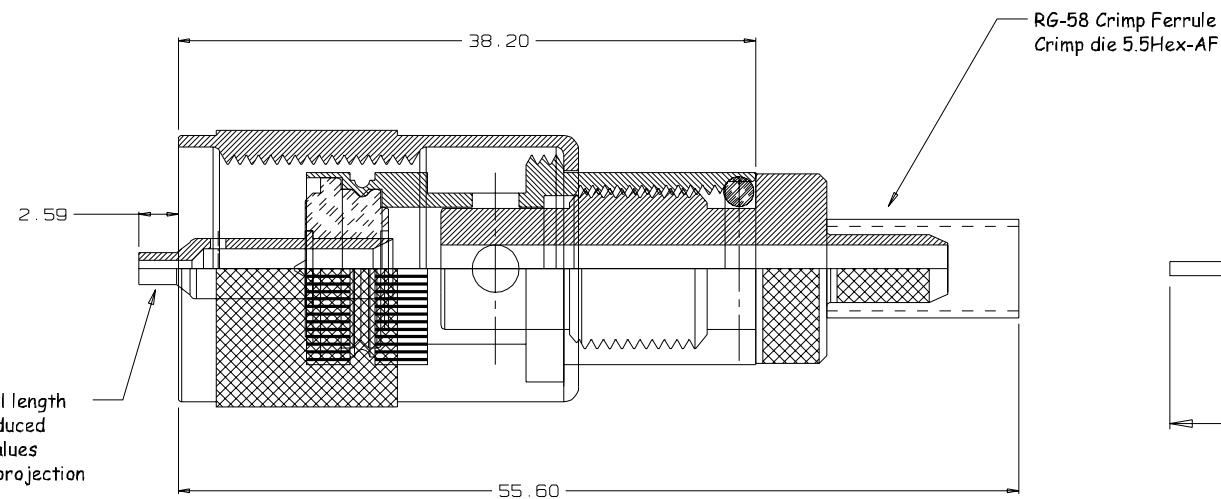


Proposed Integrated Crimp-Spigot  
and reducing adaptor for PL-259

Note - use standard RG-58 BNC Crimp-Ferrule  
for single screened cables or substitute with  
RG-223/142 for double screened cables.

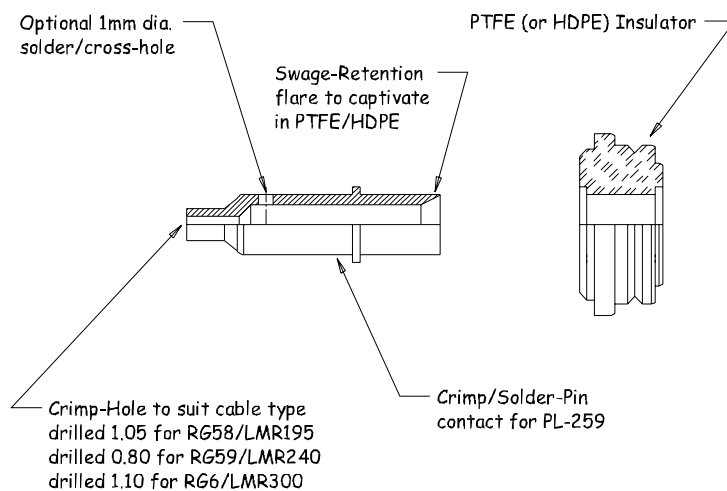
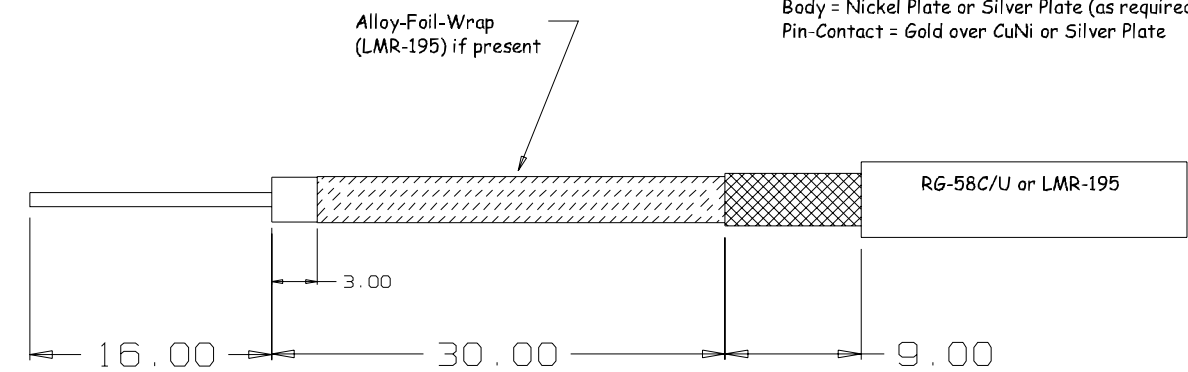


The contact overall length  
may need to be reduced  
to match typical values  
between 1~1.5mm projection

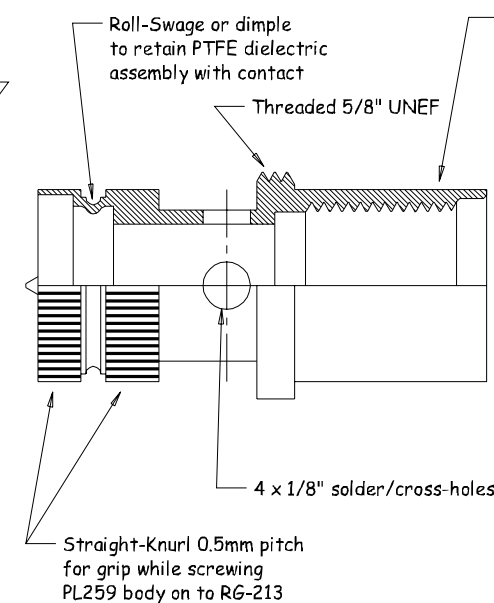


Material:  
Body & Pin = Brass  
Insulator = PTFE (or HDPE/MFB etc. to order)

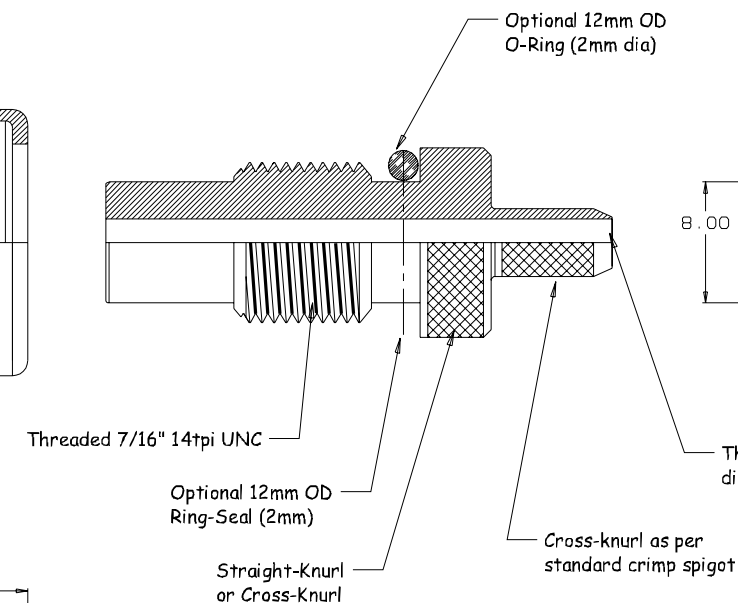
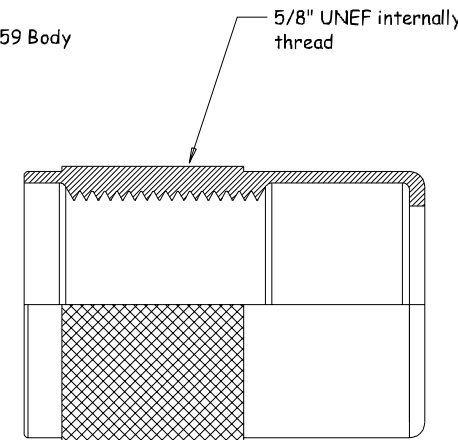
Finish:  
Body = Nickel Plate or Silver Plate (as required)  
Pin-Contact = Gold over CuNi or Silver Plate



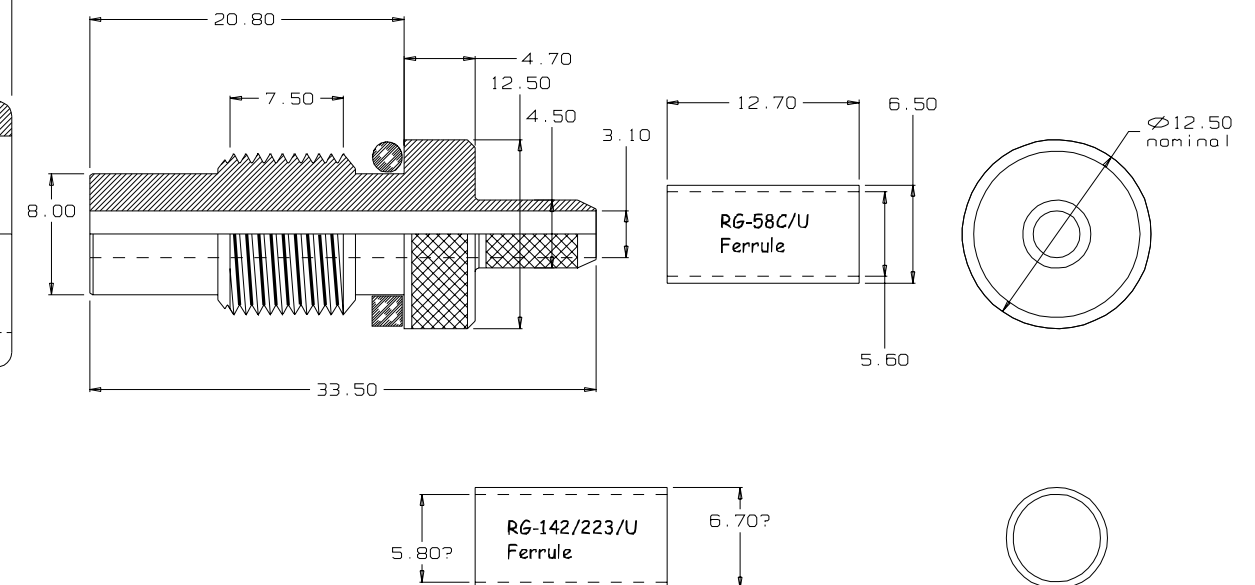
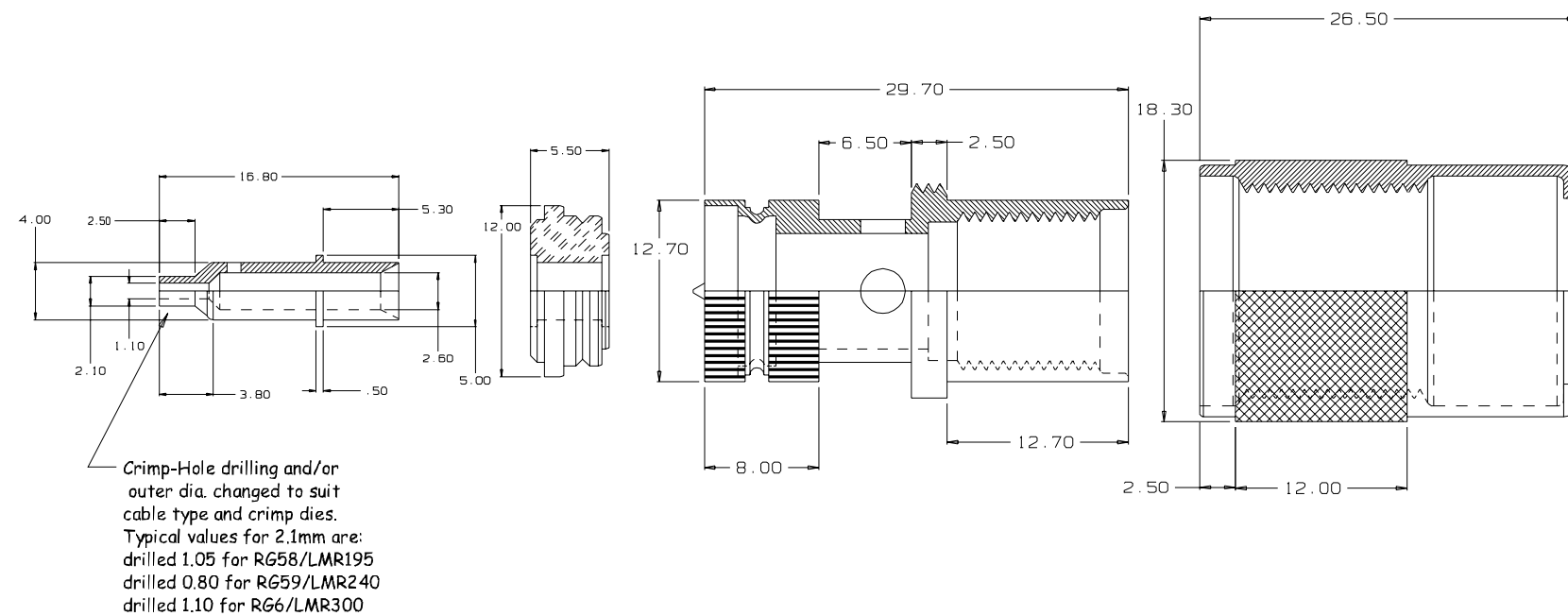
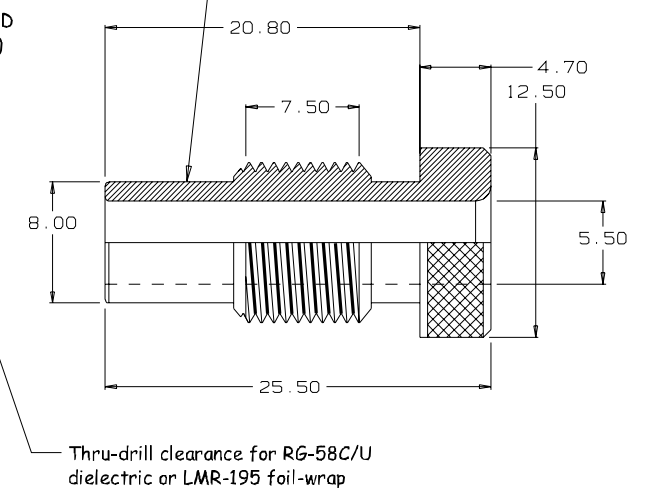
PTFE (or HDPE) Insulator



PL259 Body



Standard Reducing Adaptors  
UG-175/U RG58/223/142/LMR195 = 5.4? bore  
UG-176/U RG59/LMR240 = 6.4? bore



Note - Other proposed Crimp-Spigot (reducing-adaptors) sizes  
will include RG-59 + RG-6 and their 50 Ohm LMR equivalents  
RG-59 (replaces UG-176/U) or LMR-240  
RG-6 or LMR-300

Pin-Crimp Tooling Die Sizes (Suhner or equivalent)  
1.6mm (0.063") Square-AF for contact for RG-58/RG-142/LMR195  
1.6mm (0.063") Square-AF for contact for RG-59/LMR240  
1.6mm (0.063") Square-AF for contact for RG-6/LMR300

<b>CASA</b> Modular Systems LOWER HUTT, WELLINGTON, NEW ZEALAND TELEPHONE : (64-4) 9393 777 WWW.CASA.CO.NZ E-MAIL : sales@casa.co.nz	CUSTOMER : <b>CASA Modular Systems</b>		SIZE	DRAWING Reference No.	ISSUE
	DESCRIPTION : <b>Integrated UHF PL259 Adaptor for RG-58</b>		A3	<b>RD-UHF-RG58</b>	A
DRAWN : <b>AWB</b>		DATE : 18/03/20	APPROVED : ?	DWG. SCALE : 1:1	© COPYRIGHT : CASA Modular Systems ALL RIGHTS RESERVED