



## Series 300 – With 180 Clamp w/Locks

### Features

Solder lug terminals with .093" x .062" (2.36mm x 1.57mm) wiring holes.



- Two-contact “Jones” connector is round, all others are rectangular.
- For use in cable-to-panel and cable-to-cable applications.
- Designed for light and medium duty.
- Plug prongs are .156" (3.96mm) wide and .047" (1.19mm) thick.
- Polarized to prevent wrong-way insertion.
- Plugs have projecting flat blades, sockets have recessed twin bellows.
- Cable clamps of zinc and clear irridite-plated steel used for strain relief.
- RoHS version available
- UL Recognized-file E170218 (UL 1977), E130965 (UL1863).
- CSA-LR31996.

### Materials

- Insulation Material:
- Molded monoblock, general purpose phenolic, black UL94V-1
- Contact Material:
- Plug: Brass Socket: Phosphor bronze
- Contact Plating: Cadmium / RoHS – Matte Tin
- Operating Temperature: Up to +105°C
- Hood Material: UL 94V-0 rated thermoplastic

### Electrical

- Operating Voltage: 250 VAC RMS maximum
- Current Rating: 10 Amps
- Contact Resistance: 16 Milliohms maximum

## Part Numbers

Click on any part number to see it’s current stock with our distributors.

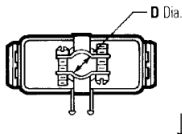
No. of Contacts	Catalog No. Plug w/Lock	Catalog No. Socket w/Keeper
2	<a href="#">P-302-CCT-L</a>	<a href="#">S-302-CCT-K</a>
3	<a href="#">P-303-CCT-L</a>	<a href="#">S-303-CCT-K</a>
4	<a href="#">P-304-CCT-L</a>	<a href="#">S-304-CCT-K</a>
6	Discontinued	<a href="#">S-306-CCT-K</a>
15	Discontinued	<a href="#">S-315-CCT-K</a>
18	Discontinued	<a href="#">S-318-CCT-K</a>
21	Discontinued	<a href="#">S-321-CCT-K</a>
24	Discontinued	<a href="#">S-324-CCT-K</a>
27	Discontinued	<a href="#">S-327-CCT-K</a>
30	N/A	N/A
33	Discontinued	<a href="#">S-333-CCT-K</a>

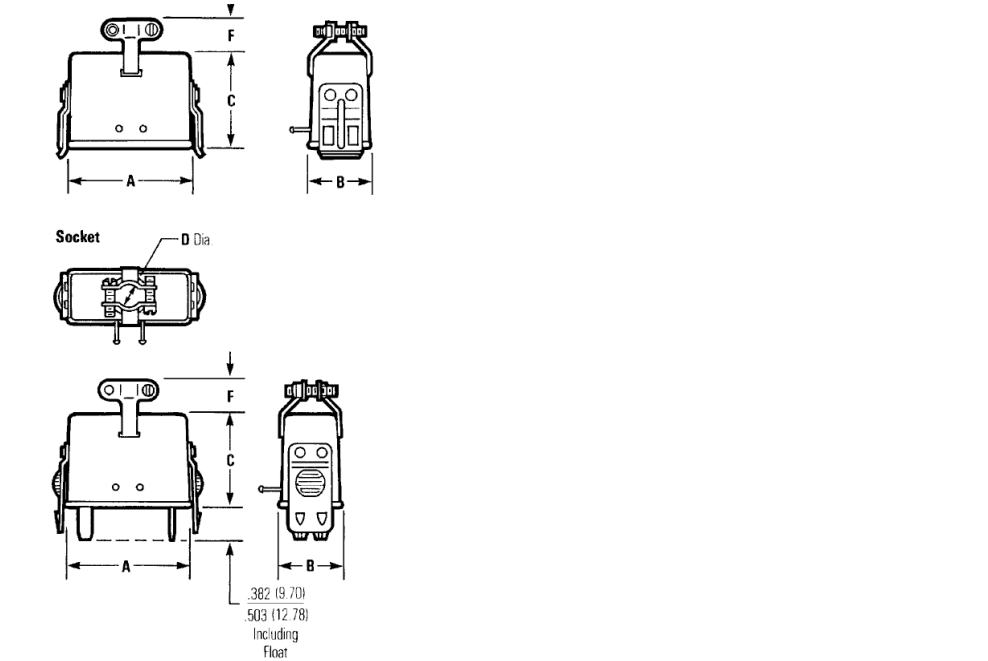
### RoHS

No. of Contacts	Catalog No. Plug w/Lock	Plug Drawing	Catalog No. Socket w/Keeper	Socket Drawing
2	<a href="#">P-302H-CCT-L</a>	<a href="#">Drawing</a>	<a href="#">S-302H-CCT-K</a>	<a href="#">Drawing</a>
3	<a href="#">P-303H-CCT-L</a>	<a href="#">Drawing</a>	<a href="#">S-303H-CCT-K</a>	<a href="#">Drawing</a>
4	<a href="#">P-304H-CCT-L</a>	<a href="#">Drawing</a>	<a href="#">S-304H-CCT-K</a>	<a href="#">Drawing</a>
6	Discontinued		<a href="#">S-306H-CCT-K</a>	<a href="#">Drawing</a>

[back to top](#)

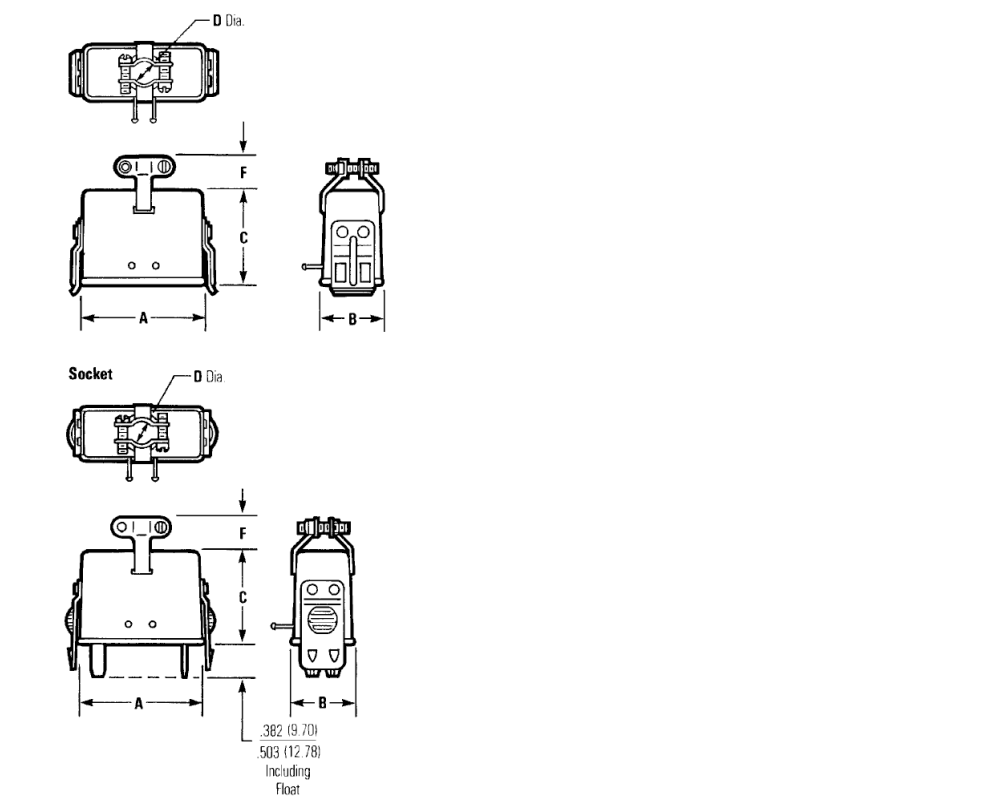
## Dimensions





No. of Contacts	A±.016 (.41mm)		B±.016 (.41mm)		C±.031 (.79mm)		F		“D” Cable Opening		Polarizing Pin	
	in	mm	in	mm	in	mm	in	mm	in	mm		
2	.691	17.5	-	-	.953	24.21	.3599	.12	.375	9.53	—	
3	1.034	26.26	.472	11.99	.953	24.21	.3599	.12	.313	7.94	—	
4	.786	19.96	.724	18.39	.953	24.21	.4691	.11	.375	9.53	—	
6	1.036	26.31	.724	18.39	1.078	27.38	.4841	.12	.29	.438	11.13	—
15	1.795	45.59	1.100	27.94	1.850	46.99	.712	.18	.08	.563	14.30	NO
18	2.107	53.52	1.100	27.94	1.850	46.99	.712	.18	.08	.563	14.30	NO
21	2.420	61.47	1.100	27.94	1.850	46.99	.712	.18	.08	.625	15.88	NO
24	2.732	69.39	1.100	27.94	1.850	46.99	.712	.18	.08	.625	15.88	14
27	3.045	77.34	1.100	27.94	1.850	46.99	.712	.18	.08	.625	15.88	14
33	3.670	93.22	1.100	27.94	1.850	46.99	.712	.18	.08	.750	19.05	17

Mounting Dimensions



Reference	A		B		C		D	
	in	mm	in	mm	in	mm	in	mm
303	.453	11.51	1.016	25.81	.750	19.05	-	-
304	.719	18.26	.781	19.84	1.000	25.40	-	-
306	.719	18.26	1.031	26.19	1.000	25.40	-	-
315	1.016	25.81	1.641	41.68	1.375	34.93	-	-
318	1.016	25.81	1.953	49.61	1.375	34.93	.625	15.88
321	1.016	25.81	2.266	57.56	1.375	34.93	.469	11.91
324	1.016	25.81	2.578	65.48	1.375	34.93	.625	15.88
327	1.016	25.81	2.891	73.43	1.375	34.93	.781	19.84
333	1.016	25.81	3.516	89.31	1.375	34.93	1.094	27.79

NOTE: For 300 Series 2 through 30 contact angle bracket connectors. All mounting holes are .156” (3.96mm) dia. Maximum chassis thickness is .063” (1.59mm) for bottom mounting. Mounting holes are located on center line unless otherwise shown.

Polarizing Patterns



302



304



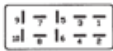
308



303



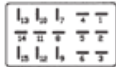
306



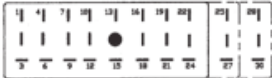
310



312



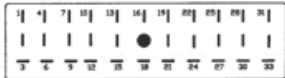
315-12



324,327,330



315,318,321



333