

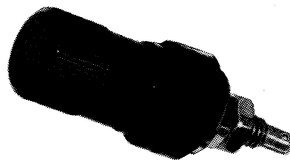
# L1301/1

Pattern 1 terminal,  
panel sealed

Specification: DEF-5335

Qualification approved for Service's use and panel sealed. Slotted construction to effect quick connection. The head is captive.

L1301/1  
with 01 Fittings.



Current rating: 10 A

Temperature

range: -25 °C to + 85 °C

Materials: Head, phenolic resin  
Stem, brass, nickel  
plated, solder spill tin-  
dipped

Colour: Black

Weight: 12,0 g average

Leakage, when

used with 01

panel fitting:  $\leq 1$  cc/h @ 20 lbf/in  
138 kPa

Humidity: H1

Wire size

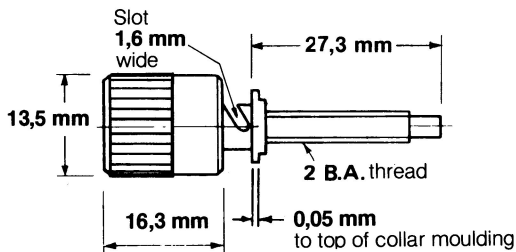
(maximum): 1,5 mm diameter

Ordering reference:

L1301/1

01 panel fittings

(Terminals and Panel fittings are  
supplied unassembled and must be  
ordered as individual items.)



## 01 panel fittings

Comprises: 2 phenolic resin  
mouldings. 2 sealing  
rings. Metal washer.  
2 lock nuts

Breakdown

voltage: >2 kVd.c.

Insulation

resistance:  $\geq 500$  megohms

Temperature

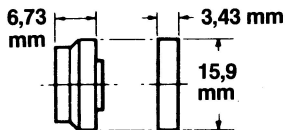
range: -55 °C to + 85 °C  
(ambient)

Panel thickness: 3,4 mm maximum

Fixing torque: 0,565 Nm

Clamping torque: 1,13 Nm

Colour: Black



Panel cut-out