

# Terminal Pins

Pins A to E inclusive are produced from Brass to BS249 (IM1442).  
 Pin C2 is produced from Phosphor Bronze to BS384  
 Pin G is produced from Phosphor Bronze to BS407 PB102  
 Pin F is produced from 36 SWG Beryllium Copper to BS2870  
 All seven pins have a Flow Brightened Tin Finish.

In order to ensure rigid fixing of these Terminal Pins in a Veroboard it is necessary that we manufacture both the pins and the holes in Veroboard to very close limits.

To insert without fracturing the board it must be supported from behind, locally around the hole and on copper clad Veroboard insert from the copper face, with the exception of A and F which are inserted from the plain side.

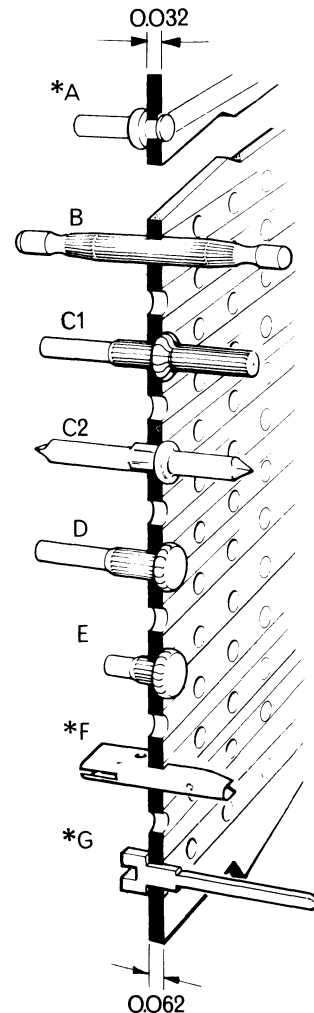
In all cases the use of our specially designed Pin Insertion Tool is strongly recommended. See below.

\*Pin A is peened over after insertion

\*Pin F is flared or soldered after insertion

\*Pin G is staked or soldered after insertion

For good electrical contact to copper track, solder of all pins is essential.



Name	Part Number	To fit hole dia.	Overall Length
A Shouldered Half Pin	TP/2145	0.025	0.222
B Terminal Pin	TP/2144	0.040	0.469
	TP/2140/3073	0.052	0.469
C1 Shouldered Terminal Pin	TP/11032	0.040	0.380
	TP/2143	0.052	0.470
C2	TP/2142	0.040	0.380
D Half Pin	TP/11034	0.040	0.286
	TP/2141	0.052	0.286
E Shorting Pin	TP/11036	0.040	0.125
	TP/11037	0.052	0.125
F Miniature Terminal	MT/11081	0.052	0.360
	MT/11082	0.040	0.360
G Miniwrap Terminal	MT/113378	0.040	0.690

# Miniwrapping Tools

## 1. Staking Tool Part No. 14477

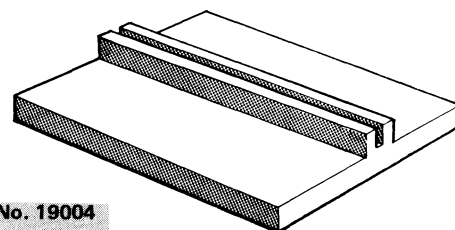
This tool is designed for use with pin type MT/13378 to enable it to be staked into a plain circuit board or copper clad board, prior to soldering. It should be used in connection with a staking dolly Part Number 19004, shown below.



1. Part No. 14477

## 2. Staking Dolly Part No. 19004

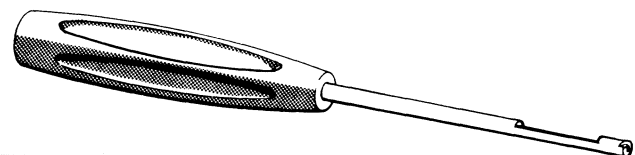
This steel tool should be used in conjunction with a staking tool Part Number 14477 to ensure that Terminal Pin MT/13378 is correctly positioned and aligned during the staking operation.



2. Part No. 19004

## 3. Hand Wrapping Tool Part No. 11772/6

The hand wrapping tool has been designed to enable the smaller user to use wrapping techniques on Vero mini wrap pins, edge connectors and DIP sockets. The tool is suitable for any 0.025 square post and is designed to give a modified wrap.



3. Part No. 11772/6

## 4. Mini Wrapping Wire Part No. 19156

A 50 metre spool of Mil-ene covered 30 AWG wire, has been introduced for the small user of the mini wrapping technique.