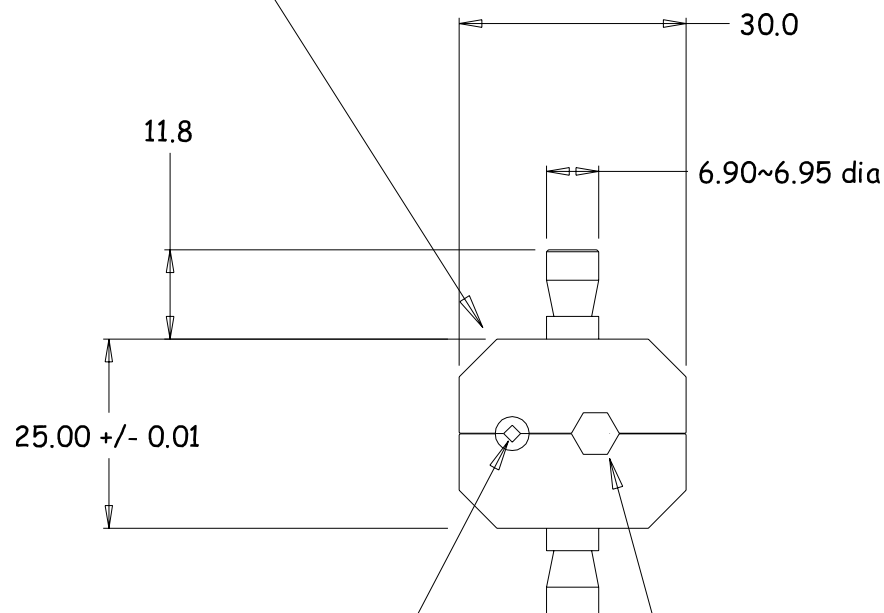
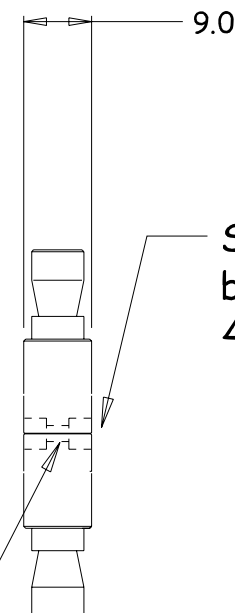


All external edges
corners and radii
chamfered 0.1mm



Square Crimp Cavity - 1.60mm AF
Tolerance +/- 0.025 AF
(crimp length = 2.5mm long)

Hex Crimp Cavity - 5.50mm AF
Tolerance +/- 0.025 AF
(crimp length = 9mm long)



Contact Cavity 2.75 long
typically creates 0.62mm
elongation (approximately)

MATERIAL
Tool-Steel

ALLOY
TOH-Hardened

EST. AREA
xxx mm

EST. WEIGHT
44 gms

EST. PERIPHERY
EXT: xxx mm
TOT: xxx mm

TOLERANCE
0.00mm ±0.1mm
00.0mm ±0.25mm
0000mm ±0.5mm
0-600mm ±0.1mm
> 600mm ±0.5mm

BS1474:1987
APPLIES UNLESS
OTHERWISE
SPECIFIED

JOB No.
3000

CASA Modular Systems
P.O. BOX 38-828, WELLINGTON, NEW ZEALAND
TELEPHONE : (64-4) 9393 777
FACSIMILE : (64-4) 9393 778

CUSTOMER : **CASA Modular Systems**

DESCRIPTION : Crimp DIE-SET for RG-58 etc.

DRAWN :
AWD

DATE :
18/05/05

APPROVED :
?

DWG. SCALE :
1:1

SIZE	DRAWING Reference No.	ISSUE
A4	76Z-0-3-1	A

© COPYRIGHT : CASA Modular Systems
ALL RIGHTS RESERVED