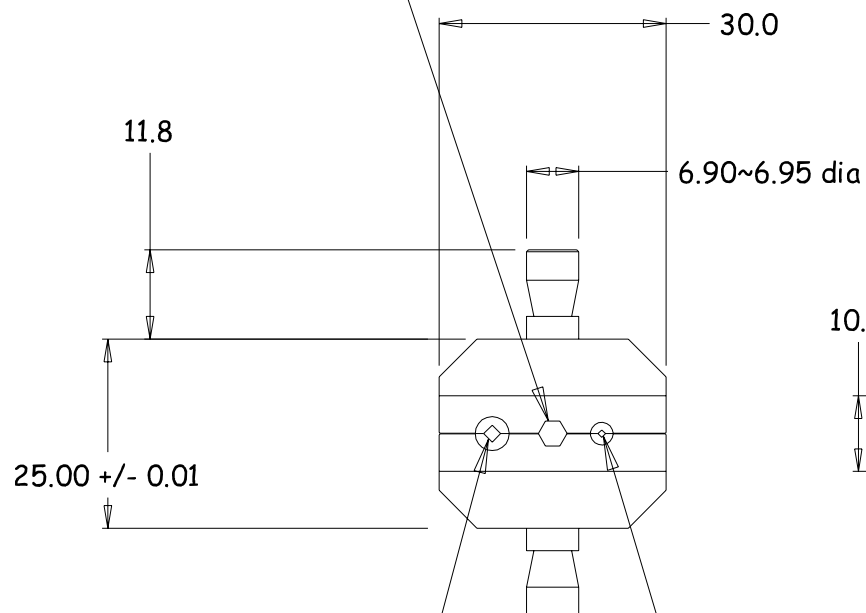
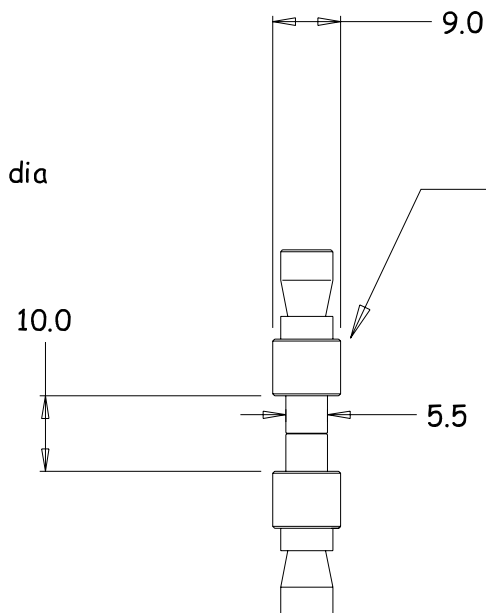


Hex Crimp Cavity - 3.30mm AF
Tolerance +/- 0.025 AF
(crimp length = 5.5mm long)



Square Crimp Cavity - 1.60mm AF
Tolerance +/- 0.025 AF
(crimp length = 2.5mm long)

Square Crimp Cavity - 0.70mm AF
Tolerance +/- 0.025 AF
(crimp length = 1.5mm long)



All external edges
corners and radii
chamfered 0.1mm

MATERIAL
Tool-Steel

ALLOY
TOH-Hardened

EST. AREA
XXX mm

EST. WEIGHT
44 gms

EST. PERIPHERY
EXT: XXX mm
TOT: XXX mm

TOLERANCE
0.00mm ±0.1mm
00.0mm ±0.25mm
0000mm ±0.5mm
0-600mm ±0.1mm
> 600mm ±0.5mm

BS1474:1987
APPLIES UNLESS
OTHERWISE
SPECIFIED

JOB No.
3000

CASA Modular Systems
P.O. BOX 38-828, WELLINGTON, NEW ZEALAND
TELEPHONE : (64-4) 9393 777
FACSIMILE : (64-4) 9393 778

CUSTOMER : **CASA Modular Systems**
DESCRIPTION : Crimp DIE-SET for RG-316 etc.

DRAWN :
AWD

DATE :
28/03/05

APPROVED :
?

DWG. SCALE :
1:1

SIZE
A4
DRAWING Reference No.
76Z-0-2-1
ISSUE
A
© COPYRIGHT : CASA Modular Systems
ALL RIGHTS RESERVED