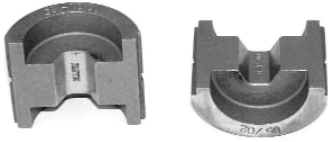


12 TONNE DIES

HEXAGONAL CRIMP DIES – Copper



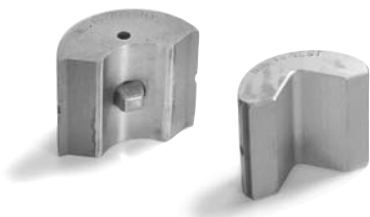
COPPER CONDUCTOR SIZE (mm ²)	PRECISION	BUDGET	COPPER DIE A/F (mm)
6	38-44CU	CDC6	4.4
10	38-57CU	CDC10	5.7
16	38-63CU	CDC16	6.3
20	38-70CU	CDC20	7.0
25	38-77CU	CDC25	7.7
35	38-92CU	CDC35	9.2
50	38-104CU	CDC50	10.4
70	38-115CU	CDC70	11.5
95	38-142CU	CDC95	14.2
120	38-165CU	CDC120	16.5
150	38-183CU	CDC150	18.3
185	38-200CU	CDC185	20.0
240	38-231CU	CDC240	23.1
300	38-260CU	CDC300	26.0

HEXAGONAL CRIMP DIES – Aluminium



ALUMINIUM CONDUCTOR SIZE (mm ²)	PRECISION	BUDGET	ALUMINIUM DIE A/F (mm)
6 - 35	38-90AL	CDA6/35	9.0
50 - 70	38-132AL	CDA50/70	13.2
95 - 120	38-173AL	CDA95/120	17.3
150 - 185	38-220AL	CDA150/185	21.0
240 - 300	38-284AL	CDA240/300	28.4

INDENT CRIMP DIES – Sector Aluminium



ALUMINIUM CONDUCTOR SIZE (mm ²)	3 CORE		4 CORE	
	NEST DIE	INDENTOR	NEST DIE	INDENTOR
70	#12NEST	#14INDENT	#14NEST	#14INDENT
95	#12NEST	#15INDENT	#14NEST	#15INDENT
120	#12NEST	#16INDENT	#14NEST	#16INDENT
150	#12NEST	#17INDENT	#15NEST	#17INDENT
185	#12NEST	#18INDENT	#15NEST	#18INDENT
240	#12NEST	#19INDENT	#15NEST	#19INDENT
300	#12NEST	#20INDENT	#15NEST	#20INDENT