
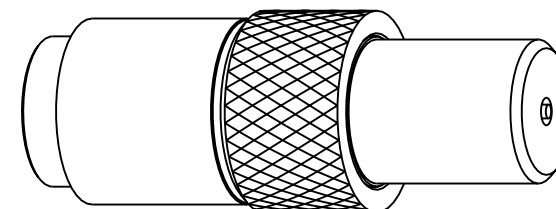


1. DO NOT SCALE THIS DRAWING

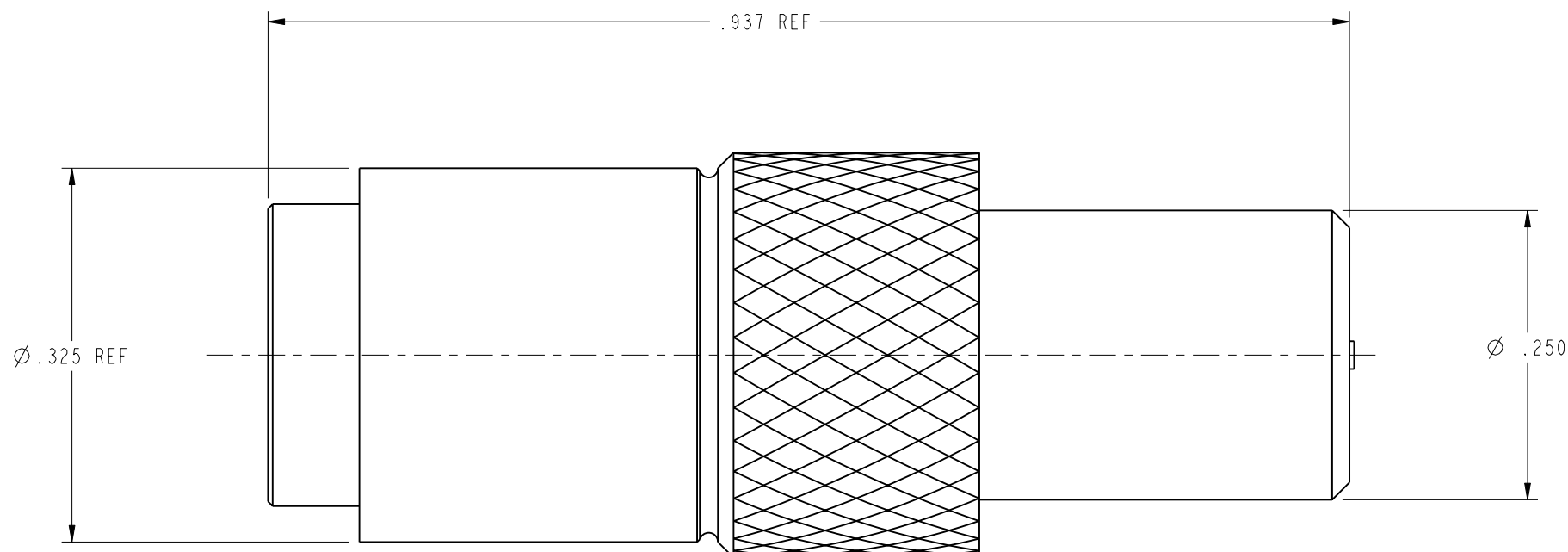
2. MATERIAL AND FINISH:  
CONTACT: BRASS, GOLD PLATED  
OUTER CONTACT: BERYLLIUM COPPER, GOLD PLATED  
INSULATION: PTFE  
RESISTOR = CARBON FILM RESISTOR  
BODY, LOCKING SLEEVE, WASHER, CUBE BODY, AND CAP : BRASS, NICKEL PLATED,  
BALLS AND COIL SPRINGS: STAINLESS STEEL

3. ELECTRICAL REQUIREMENTS:  
NOMINAL IMPEDANCE = 50 OHMS  
FREQUENCY RANGE = 0 TO 2 GHz  
VSWR = 1.1 + 0.2f GHz MAX.

102-799-050		REVISIONS				
DRAWING NO.		REV	DESCRIPTION	DATE	ECO	APPR
THIRD ANGLE PROJ. 		A	RELEASED TO MFG.	11/30/00	43601	PB/OB
		B	SEE SHEET I	2/21/02	43978	CPM
		E	SEE SHEET I	4/18/02	44018	KJC
		F	SEE SHEET I	1/17/06	45835	CPM



SCALE 3.000



ALL OTHER SHEETS ARE FOR INTERNAL USE ONLY

UNLESS OTHERWISE SPECIFIED, DIMENSIONS ARE IN INCHES AND TOLERANCES ARE: 2 PLACE DECIMAL      3 PLACE DECIMAL      ANGLES $\pm .015$ (0,381 mm) $\pm .005$ (0,127 mm) $\pm 1^\circ$	MATERIAL   REFERENCE EAR 102-967489-1 615X-1534-400 GEN# ASSYM6-1023	DRAWN C. McGRATH	DATE 2/19/02	TITLE 1.0/2.3 PLUG PUSH PULL TERMINATION			<b>Amphenol RF</b> Danbury, CT, USA Tainan, Taiwan Shenzhen, China <a href="http://www.amphenolrf.com">www.amphenolrf.com</a>		
		ENGINEER O. BARTHELMES	DATE 2/19/02						
		APPROVED O. BARTHELMES	DATE 2/20/02						
		CAD FILE 1:\1023\102-799-050			CODE ID 74868	DWG SIZE B	DRAWING NO. 102-799-050		REV E