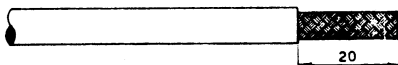
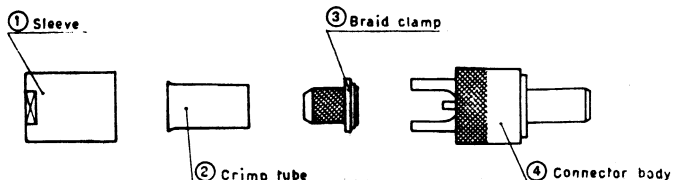




INSTRUCTION FOR ASSEMBLY OF CRIMPING TYPE COAXIAL CONNECTOR

421-004/25 PM

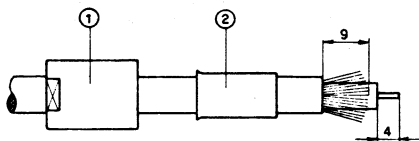
Foglio 2/2



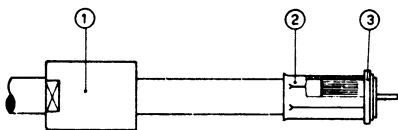
Cable type:

Siemens 2YCCY 0,7/4,4 (2/100)

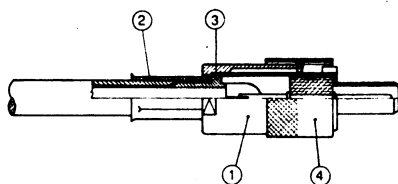
Cut 20 mm of external sheath being careful not to damage the braids.



Slip on the cable sleeve (1) and crimp tube (2). Turn back the first braid of tinned copper and cut the insulating layer between the braids. Remove 4 mm of dielectric taking care not to damage the inner conductor. Comb both braids with metal brush until all the wires are parallel. Cut the braids as indicated in fig.



Insert the braid clamp (3) over the dielectric and make it slip under the braids. Press crimping tube (2) against sleeve (3). Place it in the apposite crimping tool (for ex. our crimp tool 174-27/001. Close tightly the crimping tool.



Insert the prepared cable end into the body of connector and solder the inner conductor.
Screw outer sleeve (1) on the connector body.