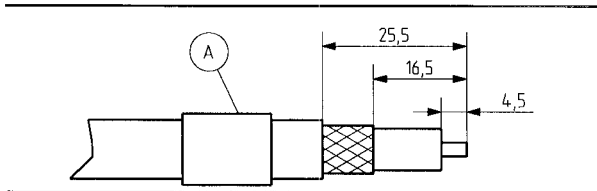
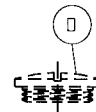
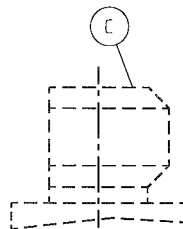
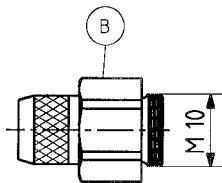
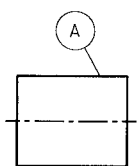
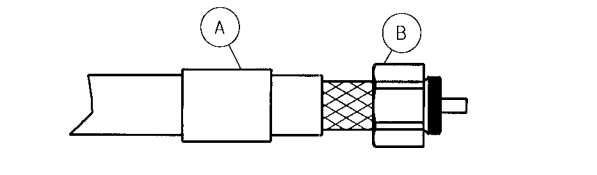


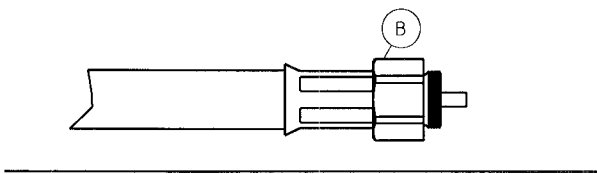
Tools and materials required: Stanley blade Scissors, Screw driver Crimp tool (see table below) Spanner SW 13 (74Z-0-0-37) Soldering iron 100 Watt Solder Sn/Pb 60/40 \varnothing 0,8mm activated rosin flux		Cable entry: 71 Z 0 – 7 – 21 /– 22 for straight and right angle connectors	
This connector is supplied in 2 parts.	Suitable cables	RG 213/U / RG 214/U	
	Centre contact:	soldered	
	Braid:	cavity D	
	Crimp tool:	3 D (violet)	



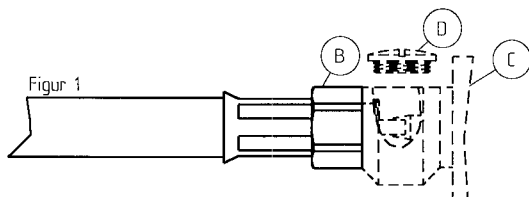
Slide ferrule A onto cable.
Prepare cable according to diagram.
CAUTION: Do not damage braid and inner conductor of cable!



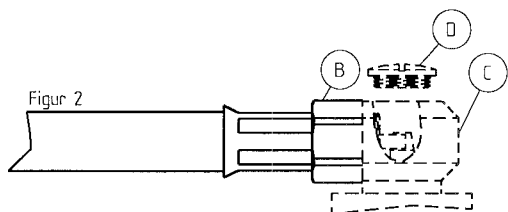
Splay out braid and insert cable in connector body B.
Ensure that braid lies above the crimp neck.



Slide ferrule A over braid and crimp as close to connector body B as possible.



Final assembly according to:
Fig.1 = straight connector
Fig.2 = right angle connector



Screw prepared cable with entry parts A and B into connector head C and tighten fully (11 Nm).
Solder inner conductor to contact and screw on cover D.

SUHNER's skilled staff and specialised equipment are available to carry out complete R.F.lead-assembly on your behalf.
We mount your connectors on cables at economic prices! Please contact our representative for further details of this service.

