

57 series micro-ribbon connectors**Specifications**

(Meet requirements of SCL-6020A)

Current Capacity 5A per contact.

Voltage Rating 700V d.c. at sea level.

200V d.c. at 70,000 ft.

Operating Temperature -55 °C to +105 °C.

Temperature -67 °F to +221 °F.

Wire Sizes Solid—22 gauge max.

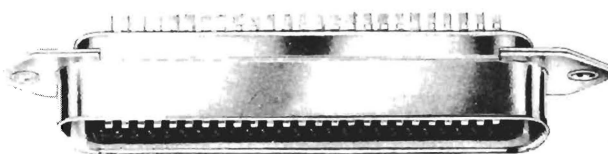
Stranded—24 gauge max.

Contacts 0-000030" gold plated over copper flash on cadmium copper base.

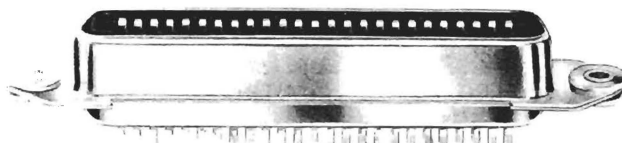
Dielectric Diallyl phthalate per Mil-M-14F Type MDG.

Shells Zinc plated brass with clear chromate coating, trapezoidal shape for polarization. Gold iridescent chromate finish also available.

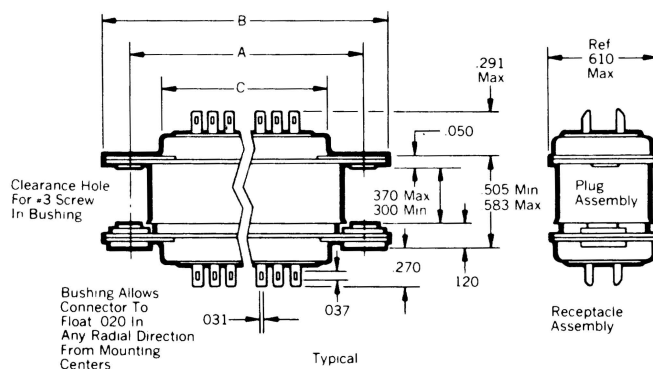
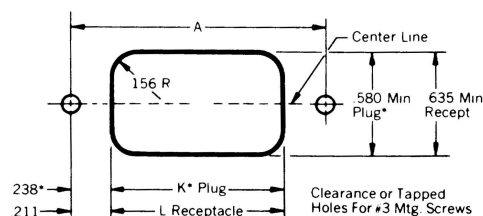
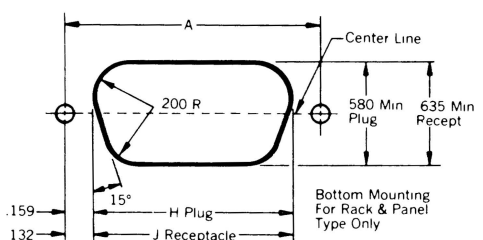
and are available with high dielectric barrier between contact rows in certain sizes. Printed circuit type tails are 0-100" long and taper from 0-023" at the base to 0-019" at the tip, allowing it to fit easily into a 0-025" plated-through hole in a printed circuit board.



(Actual size)

**Rack and panel type**

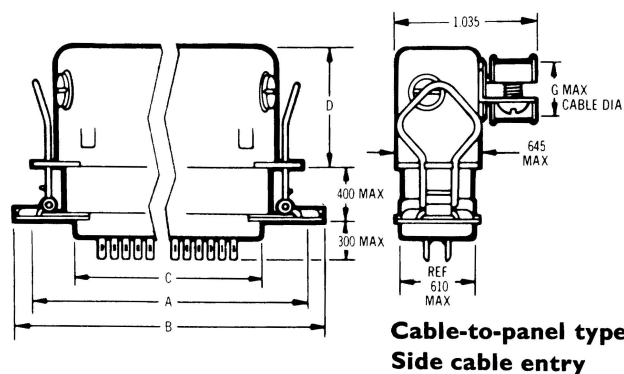
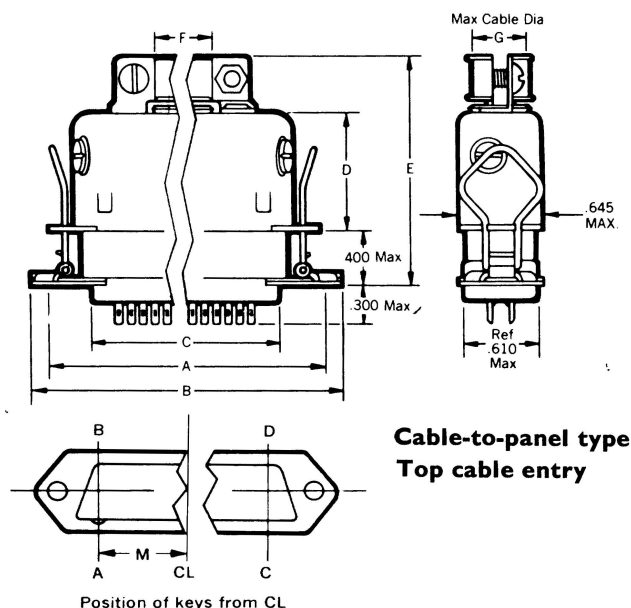
Rack and Panel Connectors have float bushings which allow 0-020" radial float. Available in solder cup type or with printed circuit type contact tails. Solder cup tails accept 22 gauge solid or 24 gauge (max.) stranded wire

**Dimensions**

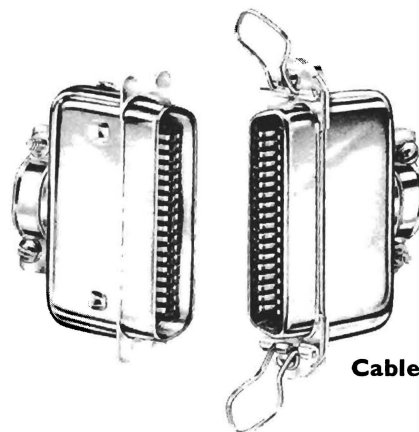
		14 Contacts	24 Contacts	36 Contacts	50 Contacts	64 Contacts
	A	1-417	1-842	2-352	2-947	3-542
	B	1-750	2-175	2-685	3-270	3-860
	C	0-910	1-335	1-845	2-440	2-635
Bottom Mounting	H	1-098	1-523	2-033	2-628	3-224
	J	1-153	1-578	2-088	2-685	3-278
Top Mounting	K	0-940	1-365	1-876	2-472	2-471
	L	0-995	1-420	1-930	2-525	3-066

NOTE: All dimensions are references in inches

57 series Cable-to-panel and cable-to-cable styles
Micro-Ribbon Connectors are also available in both cable-to-panel and cable-to-cable configurations. Sturdy spring type latches on the receptacles fit into cut-outs on plug flanges to keep connectors mated despite gravity, vibration or shock. Cable-to-panel styles have cable entry at top or sides as desired. Standard cable-to-cable type has cable entry at top of shell with strain relief clamp. Shells can be keyed to prevent mis-mating of multiple connector pairs.



tion or shock. Cable-to-panel styles have cable entry at top or sides as desired. Standard cable-to-cable type has cable entry at top of shell with strain relief clamp. Shells can be keyed to prevent mis-mating of multiple connector pairs.



Dimensions (inches)

	14 contacts	24 contacts	36 contacts	50 contacts
A	1.417	1.842	2.352	2.947
B	1.750	2.175	2.685	3.270
C	0.910	1.335	1.845	2.440
D	0.843	0.843	0.905	1.000
E	1.668	1.668	1.730	1.825
F	0.306	0.473	0.640	0.766
G	0.422	0.473	0.473	0.473
Top Mounting K*	0.940	1.365	1.876	2.472
L	0.995	1.420	1.930	2.525

Key Position M 0.200 4.00 0.650 0.950

NOTE: All dimensions are referred to in inches.

* Use this dimension for cable-to-panel mounting.

Ordering Information

Contacts	Cable-to-Panel			Cable-to-Cable	
	Plug Top Cable Entry	Plug Side Cable Entry	Receptacles	Plugs	Receptacles
14	57-30140	57-50140	57-40140	57-30140	57-60140
24	57-30240	57-50240	57-40240	57-30240	57-60240
36	57-30360	57-50360	57-40360	57-30360	57-60360
50	57-30500	57-50500	57-40500	57-30500	57-60500

57 series ordering information**57 - 10****SERIES NUMBER**
57**CONNECTOR TYPE**

- 1 Fixed Panel Mount**
Receptacle Shell Connector with Male (Plug) Insert
- 2 Float Panel Mount**
Plug Shell Connector with Female (Receptacle) insert
- 3 Cable Type, Top Cable Entry**
Receptacle Shell Connector with Male (Plug) insert
- 4 Panel Mount with Spring Locks**
Plug Shell Connector with Female (Receptacle) Insert
- 5 Cable Type, Side Cable Entry**
Receptacle Shell Connector with Male (Plug) insert
- 6 Spring Lock Plug Shell with Top Cable Entry for Cable-to-Cable Use**
Plug Shell Connector with Female (Receptacle) Insert

26 series blue ribbon connectors

Developed to provide rugged, heavy duty interconnections where size is not a limiting factor and larger gauge wires must be used.

Plugs and receptacles are moulded of high impact diallyl