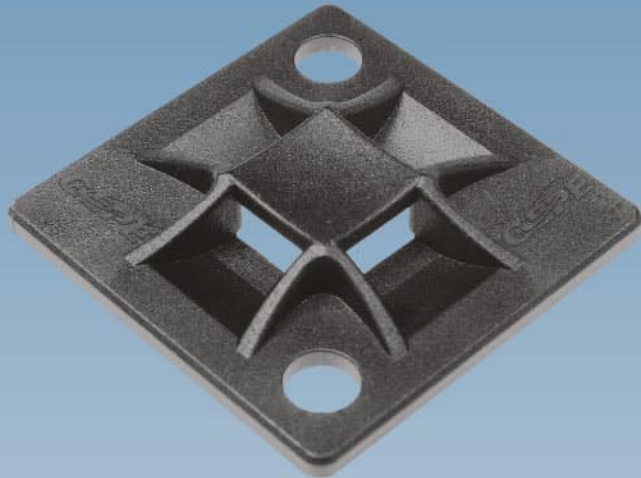
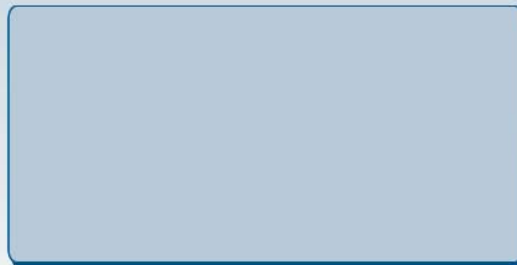


# MOUNTING BASE



- *The universal design allows the cable tie to be inserted in any of the four directions.*
- *The corner holes allow mounting the base even with the cables attached.*
- *The Gepe mounting bases are available, as screw fixing and self adhesive, in three different sizes for cable widths up to 8,2mm. Colour versions: black and natural.*
- *The curved cover plate keeps the cable tie in place during pre-assembly.*
- *Suitable for applications in Electrical, Industrial and Electronics Industries as well as in many other fields.*



# Featuring the unique... **Q-tie®**

For years engineers have been trying to design a cable tie with an open lock head to make bundling faster and easier. With the new Q-tie® we have now succeeded: Q-tie® has an open lock head and the same size and strength of conventional cable ties!

The open lock head does not bend apart under load thanks to the two rails inside the lock head. These rails interlock with the tracks on the strap with very high precision! As the force builds up in the lock head the rails are pressed harder into the tracks. Simultaneously, the strap's stepped pawl safely locks into the serrations in the strap!

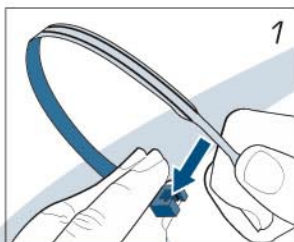
- **Q-tie® is much faster and easier to install** resulting in a much lower IPC (in place cost). IPC is determined by the cost of the cable tie plus the cost to mount it. A leading Scandinavian automotive manufacturer's field studies proves Q-tie® has a much lower IPC than conventional cable ties.

- **Q-tie® is ergonomic for the user.** A conventional cable tie with its small lock head opening requires much more precise and therefore exhausting mounting. With rapid mounting periods the operator is more subject to work related injuries.

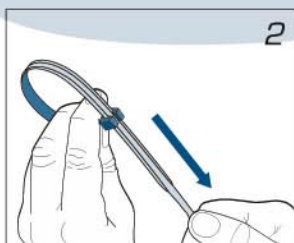
- **Q-tie® bigger sizes can also be mounted temporarily** by placing the PreLock device into the lock head. This is of great help at installations where cables are added over time prior to being permanently bundled with a cable tie.

- **Q-tie® is mounted with one hand grip and movement.** No cables can «escape» the cable ties.

- **Q-tie® can be mounted «blind» without seeing the mounting spot.** This is a tremendous advantage in narrow or difficult to access mounting spots.



While holding the large ribbed tail of the strap, the thin part of the strap is inserted into the gap of the «lock-head».



The strap is pulled through the «lock-head» and its serrations lock with the stepped pawl of the «lock-head».

- The guide rails on the shoulders holds the head together to ensure maximum strength

- The stepped pawl safely locks onto the serrations within the strap

- The tracks in the strap interlock with the rails within the head

- The large ribbed tail ensures a safe and ergonomic grip

- PreLock system for temporarily fixation

- The thin part of the strap allows an easy insertion into the open «lock-head»

- The open «lock-head» ensures fast and easy installation

- Easy
- Fast
- Safe
- Secure

Q-tie is available in 4 different widths and in various lengths



**The next generation cable ties with the unique open «lock-head»**