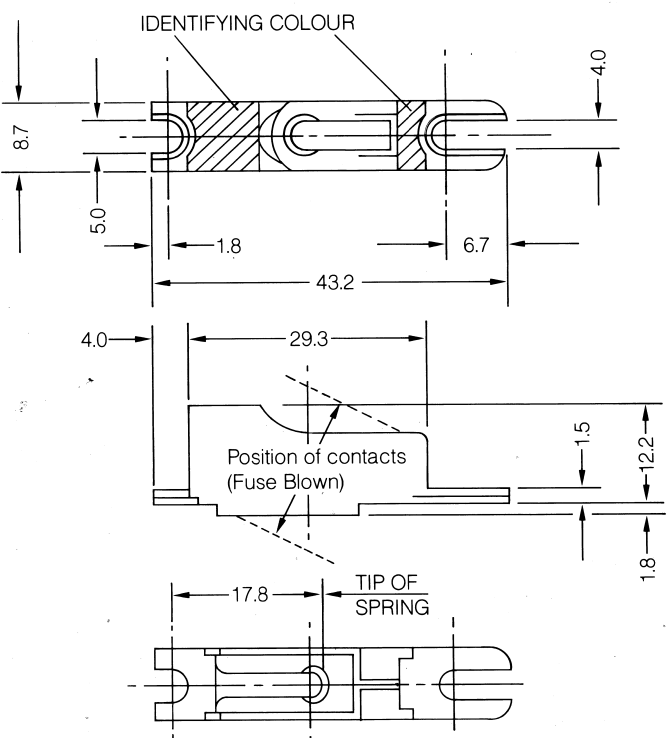
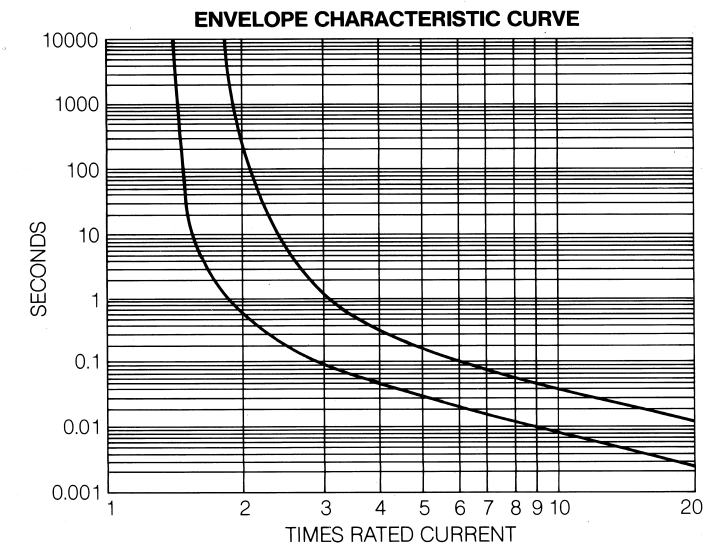


# P044/A Fuses

Low voltage alarm and indicating mounting fuselink  
Phenolic moulded body



% RATED CURRENT	PERFORMANCE DATA					
	100		150		220	
	MIN	MAX	MIN	MAX	MIN	MAX
PERFORMANCE	1000 HRS	-	10 SEC	-	-	30 SEC



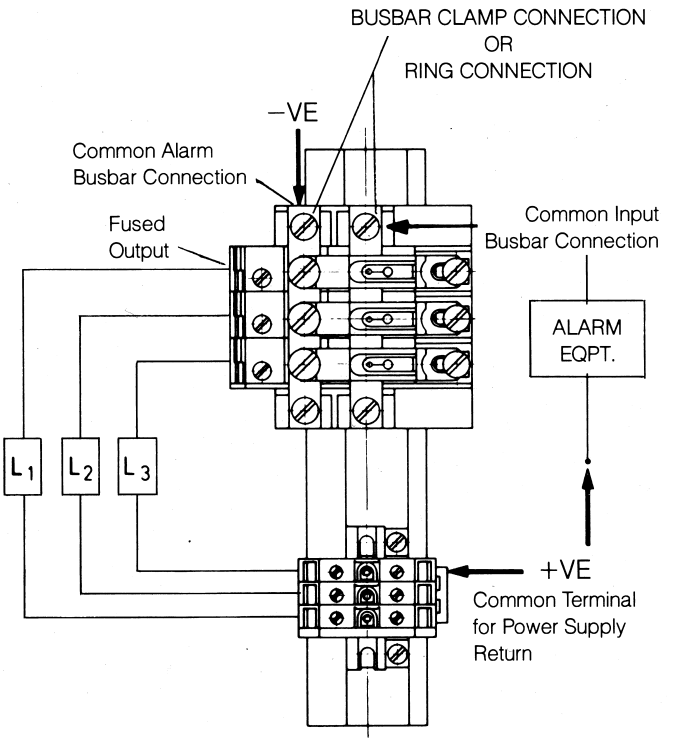
With acknowledgement to Kenneth E. Beswick Ltd.

Standard Fuse	Cat. No.	Non-standard Fuses (coded to TDP 44 and rating otherwise to PO specification)	Cat. No.
.25A Brown	043420	.75A Salmon Pink	043510
.5A lt. French Blue	043430	2.5A Orange	043520
1A Lemon	043440	3.5A Blue & Black	043530
1.5A Red	043450	4.5A Dark Brown	043540
2A Violet	043460	9A Orange & White	043550
3A Black	043470	15A Orange & Green	381870
4A Grey	043480		
5A Green	043490		
6A White	043500		

A typical 3-way assembly with Common Input and Common Alarm as illustrated would be built up as follows:-

- 3 Terminal Blocks AFT 033322
  - 2 End Section AP 033302
  - 2 Support Brackets SBr 033316
  - 1 Alarm Busbar ABB 3 ways
  - 1 Main Busbar MBB 3 ways
  - 2 Busbar Connections
- Busbar connections can be made by ring crimps, etc., or by screw clamp connector type BBC 035220

Plus 3 ways of SAKR, or SAK 2.5 if required, for return connection all mounted on a suitable length of TS 32 channel.



**Note:-**

Standard SAK terminal blocks can also be mounted on the TS 32 assembly rail for the +VE terminations.

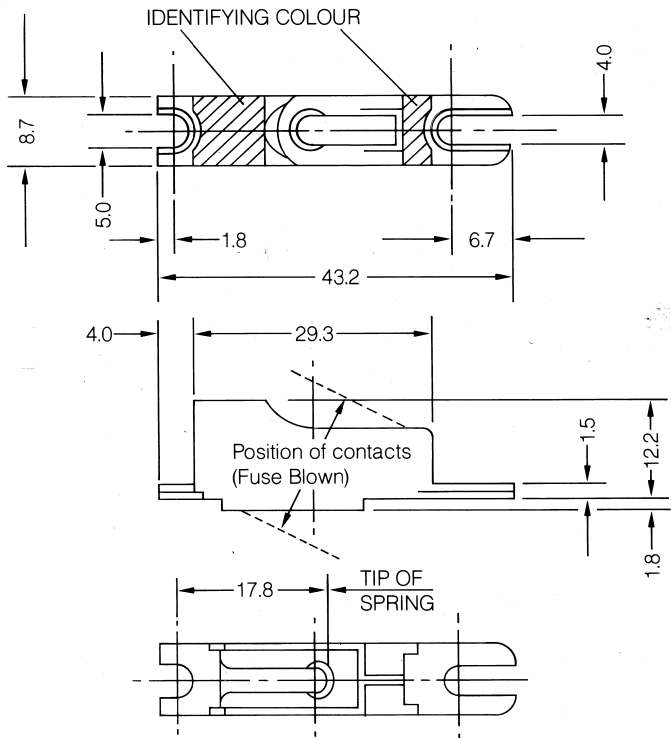
We suggest:-

SAKR for disconnect connections (cross connect, using the required length of QB 25 013400, as necessary).

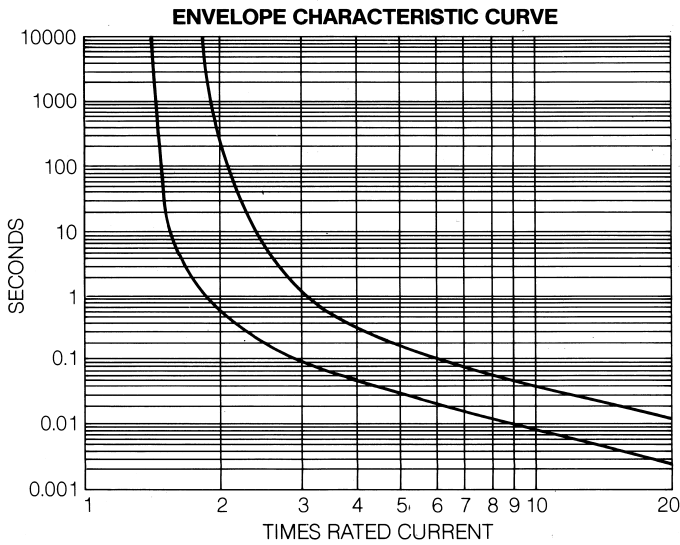
SAK 2.5 for feed-through connections (cross connect using the required length of QL as necessary).

# P044/A Fuses

Low voltage alarm and indicating mounting fuselink  
Phenolic moulded body



% RATED CURRENT	PERFORMANCE DATA					
	100		150		220	
	MIN	MAX	MIN	MAX	MIN	MAX
PERFORMANCE	1000 HRS	—	10 SEC	—	—	30 SEC



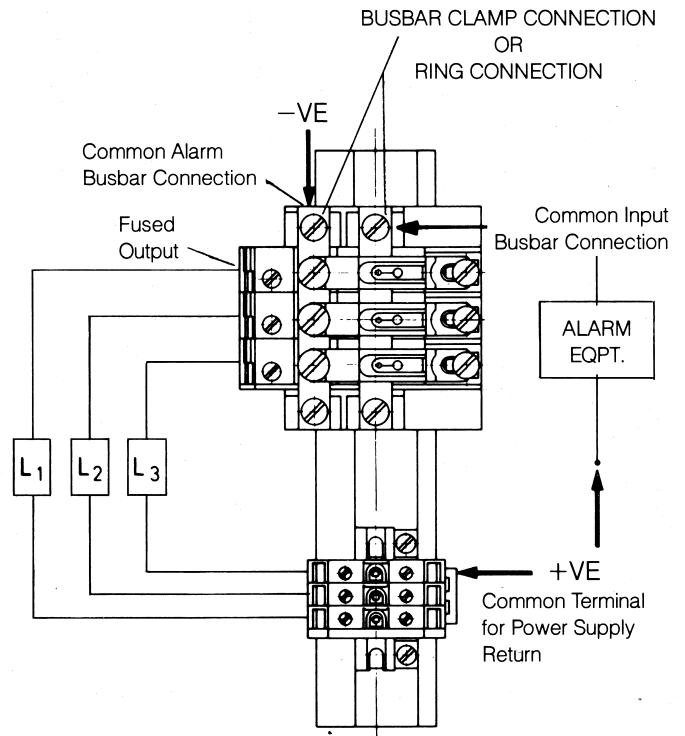
With acknowledgement to Kenneth E. Beswick Ltd.

Standard Fuse	Cat. No.	Non-standard Fuses (coded to TDP 44 and rating otherwise to PO specification)	Cat. No.
.25A Brown	043420	.75A Salmon Pink	043510
.5A Lt. French Blue	043430	2.5A Orange	043520
1A Lemon	043440	3.5A Blue & Black	043530
1.5A Red	043450	4.5A Dark Brown	043540
2A Violet	043460	9A Orange & White	043550
3A Black	043470	15A Orange & Green	381870
4A Grey	043480		
5A Green	043490		
6A White	043500		

A typical 3-way assembly with Common Input and Common Alarm as illustrated would be built up as follows:-

- 3 Terminal Blocks AFT 033322
  - 2 End Section AP 033302
  - 2 Support Brackets SBr 033316
  - 1 Alarm Busbar ABB 3 ways
  - 1 Main Busbar MBB 3 ways
  - 2 Busbar Connections
- Busbar connections can be made by ring crimps, etc., or by screw clamp connector type BBC 035220

Plus 3 ways of SAKR, or SAK 2.5 if required, for return connection all mounted on a suitable length of TS 32 channel.



**Note:-**

Standard SAK terminal blocks can also be mounted on the TS 32 assembly rail for the +VE terminations.

We suggest:-

SAKR for disconnect connections (cross connect, using the required length of QB 25 013400, as necessary).

SAK 2.5 for feed-through connections (cross connect using the required length of QL as necessary).