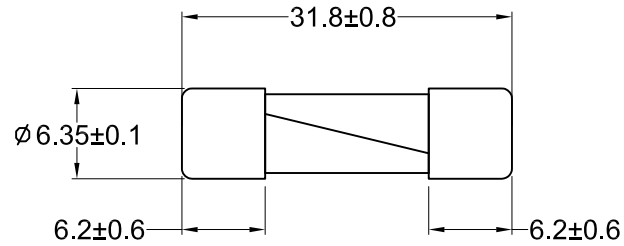


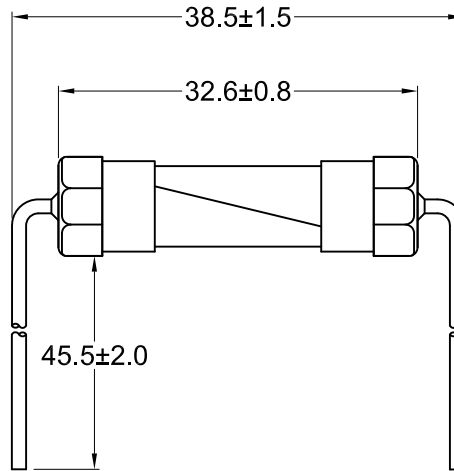
Rating cap marking: TXXAL250V

Logo cap marking: 

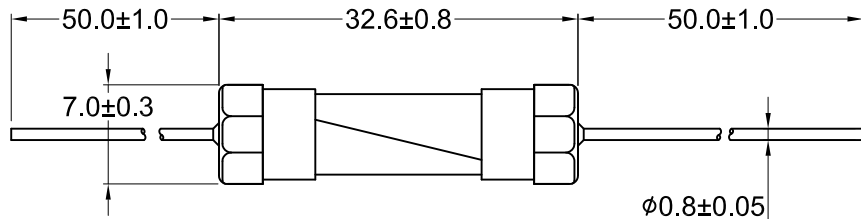
GTG63



GTG63-PR








GTG63-PA



Rated current	Rated voltage V	Maximum Voltage drop	Maximum sustained Power dissipation
32mA	250	5000mV	1.6W
40mA		4000mV	
50mA		3500mV	
63mA		3000mV	
80mA		3000mV	
100mA		2500mV	
125mA		2000mV	
160mA		1900mV	
200mA		1500mV	
250mA		1300mV	
315mA		1100mV	
400mA		1000mV	
500mA		900mV	
630mA		300mV	
800mA		250mV	
1A		150mV	
1.25A		150mV	
1.6A	150mV		
2A	150mV		
2.5A	120mV		
3.15A	100mV		
4A	100mV		
5A	100mV		
6.3A	100mV		
8A	100mV		
10A	125	100mV	4W

Test specification according to standard IEC-127-2 SHEET3-2003  
Electrical Characteristic

% of Rated Ampere	1.5In		2.1In		2.75In		4In		10In		UNLESS OTHERWISE SPECIFIED DIMENSIONS ARE IN MM TOLERANCE DECIMALS      ANGULAR X ± 0.5           ± 2° XX ± 0.25 DO NOT SCALE DRAWING	CUSTOMER NO.	 JENN FENG ELECTRIC INDUSTRIAL CO., LTD
	Min.	Max.	Min.	Max.	Min.	Max.	Min.	Max.	Min.	Max.			
In	Min.	Max.	Min.	Max.	Min.	Max.	Min.	Max.	Min.	Max.	 	CHECKED BY 	Miniature Cartridge Fuse 6.35x32mm Time -Lag Low Breaking Capacity
32mA - 100mA	1h	2min	200ms	10 s	40ms	3 s	10ms	300ms	APPROVED BY 	DATE		2017.09.19	
Above 100mA -10A	1h	2min	600ms	10 s	150ms	3 s	20ms	300ms	REV	B	SCALE	DRAWING NO.	AA05071106