



## Sealed lampholders

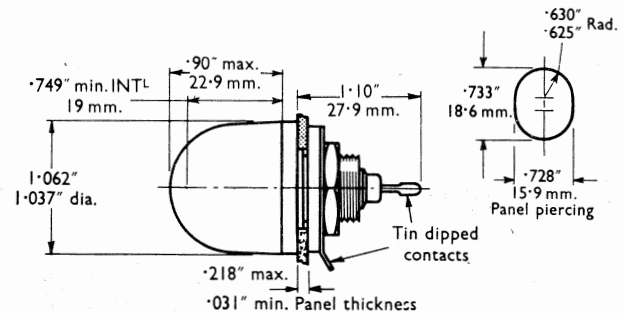
Qualification approval to DEF 5201

These lampholders are designed primarily for use in sealed radio and electronic equipment for reliability under the severe conditions of service required by Services specification DEF 5201. Reliable sealing of the lampholders, unaffected by elevated temperatures, is achieved by means of ceramic-to-metal seals, and lamps may be renewed without breaking the seal to the equipment. In each case the connections are insulated from the mounting panel. Both the LH21, which accommodates MES

lamps, and the LH23 using Midget flange lamps S6/8, are supported by a range of caps fitted with glass or alkyd lenses in a wide range of colours. This range includes dimming caps which vary illumination from maximum to zero by manual rotation of the cap through 60°, and for the LH23 style special caps to accommodate long neon lamps. On the LH23 body the lamp centre contact is coded red for identification when using neons.

### Ordering information LH21 sealed lampholder

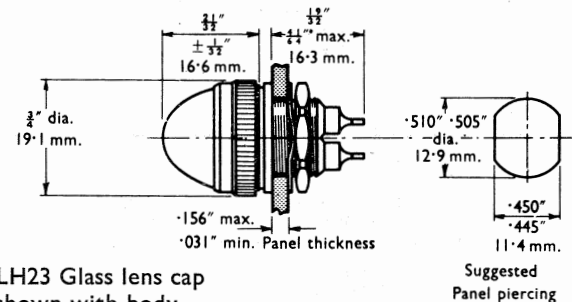
Description	Plessey Part No.	J.S. REF. 6210-99-
Body assembly	418/1/05503	011-9194
Lens & Bezel, frosted glass		
Clear	418/4/05037/011	012-2899
"    Red	012	012-2893
"    Green	013	012-2895
"    Blue	016	012-2896
"    Yellow	017	012-2894
"    Orange	018	012-2897



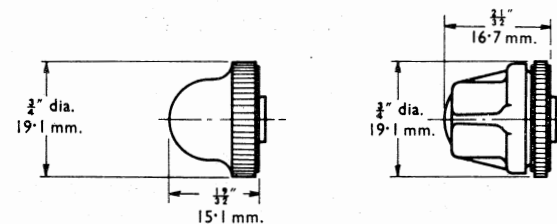
LH21 Glass lens shown with body assembly.

### Ordering information LH23 sealed lampholder

Description	Plessey Part No.	J.S. REF. 6210-99-
Body Assembly	418/1/05507	012-0913
Lens, Frosted Glass, Clear	418/1/05000/011	012-7427
"    Red	012	012-7421
"    Green	013	012-7423
"    Blue	016	012-7424
"    Yellow	017	012-7422
"    Orange	018	012-7425
Lens cap, Alkyd		
Red	418/1/05508/001	943-4173
"    Amber	002	943-7804
"    Green	003	943-7808
Dimmer cap, Alkyd, Red	418/1/05510/001	012-0914
"    Green	002	012-0916
"    Amber	003	012-0915
Lens cap, long neon, Clear	418/1/05003	580-0610



LH23 Glass lens cap shown with body assembly



LH23 plain alkyd lens cap

LH23 Alkyd dimmer cap



**Light, indicator, sealed—style M10, to DEF 5201**

The miniature Indicator Light, Style M10, has been designed primarily for use in sealed radio and electronic equipment for reliability under the severe conditions required by the Services Specification DEF 5201.

Glass-to-metal sealing is unaffected within the temperature range  $-55^{\circ}\text{C}$  to  $+100^{\circ}\text{C}$  and the lamp may be replaced without breaking the seal to the equipment.

Glass lenses, tested to DEF 5201, are available in the following colours; GREEN, RED, YELLOW, BLUE, ORANGE, CRYSTAL & FROSTED CRYSTAL.

**STANDARD SPECIFICATION**

Working Voltage;

- a. 50 V d.c. between terminations.
- b. 150 V d.c. terminations to earth.

Light Transmission;

To DEF 5201, no significant deterioration after 2000 hours endurance test.

Torque;

- Lens 0.56 Nm (5 lbf in)
- Fixing 0.90 Nm (8 lbf in)

Insulation Resistance;

Initially and after all other tests.

- a. 10 megohms between terminations.
- b. 500 megohms terminations to earth.

After Final Damp Heat Cycle or Tropical exposure after 2 hours.

- a. 1 megohm between terminations.
- b. 50 megohms terminations to earth.

After 24 hours recovery

- a. 10 megohms between terminations.
- b. 100 megohms terminations to earth.

Panel thickness;

0.8 mm ( $1/32$ " min. 3.2 mm ( $1/8$ " max.

Sealing;

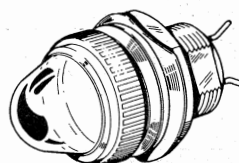
Rate of leakage not greater than 1 cc per hour at a pressure of one atmosphere.

Lamps & Rating;

Subminiature capped lamp 6 V, 12 V or 28 V 0.5 W of the T1 Wheater Type (similar to NATO Stock number 6240-99-995-1198).

Temperature Category;

Light Indicator and glass lens  $-55^{\circ}\text{C}$  to  $+100^{\circ}\text{C}$ .



The Miniature Indicator Light

**MATERIALS**

BODY;

Dural to BS 1476 hard anodised (natural) to DEF 151

NUT;

Dural, hard anodised (natural) to DEF 151.

WASHER;

Beryllium copper cad. plate to DTD 904, passivate to DEF 130.

LENS HOUSING;

Brass, to DTD 627, DNP to DTD 919.

LENS;

Glass (Green, Red, Yellow, Blue, Orange, Crystal and Frosted Crystal.

CONNECTING PINS;

Tinned

PANEL SEAL;

Nitrile, Synthetic Rubber.

LENS-HOUSING SEAL;

Nitrile, Synthetic Rubber.



## Light, indicator, sealed—style M10, to DEF 5201 (cont.)

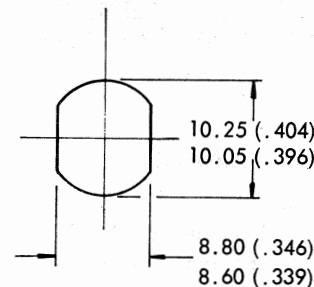
### ORDERING INFORMATION

To order supplies of the M10 sealed Indicator Light and/or lenses it is sufficient to quote the Part No. given in the table below.

Description	Part Number
Light, Indicator, without lens	418/1/05022
Light, Indicator, c/w Green lens	418/1/05021/001
Light, Indicator, c/w Red lens	418/1/05021/002
Light, Indicator, c/w Yellow lens	418/1/05021/003
Light, Indicator, c/w Blue lens	418/1/05021/004
Light, Indicator, c/w Crystal lens	418/1/05021/005
Light, Indicator, c/w Orange lens	418/1/05021/006
Light, Indicator, c/w Frosted crystal lens	418/1/05021/007
Lens, Green	418/1/05521/001
Lens, Red	418/1/05521/002
Lens, Yellow	418/1/05521/003
Lens, Blue	418/1/05521/004
Lens, Crystal	418/1/05521/005
Lens, Orange	418/1/05521/006
Lens, Frosted crystal	418/1/05521/007
Lamp Removal Tool	418/1/06603

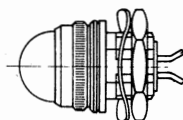
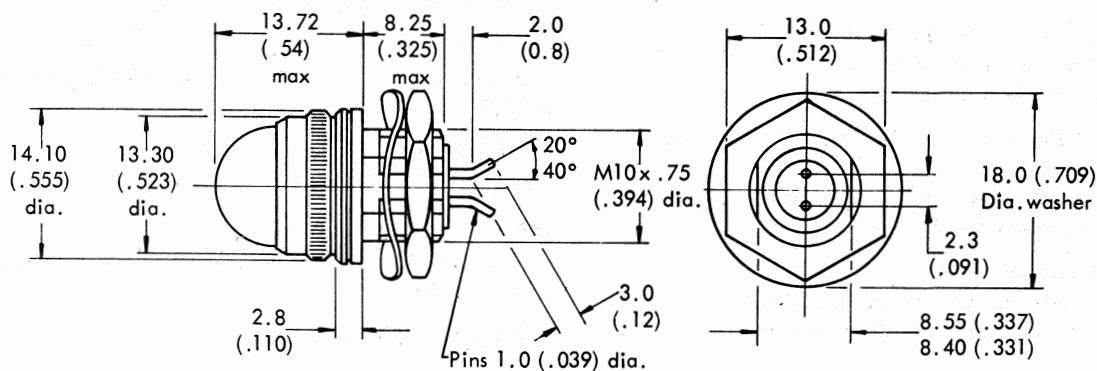
NOTES; Also available

1. A sealed dimmer cap suitable for aircraft applications.
2. A plastic lens for less critical environmental conditions
3. A clip-on directional hood

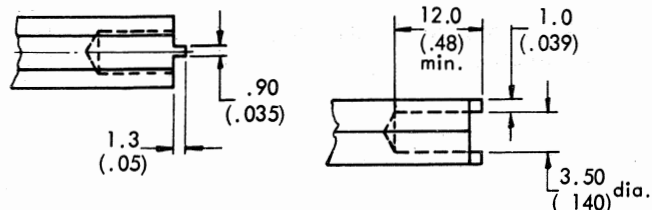


PANEL PIERCING

All dimensions are in millimetres (inches)



SCALE Approx. Actual Size



REMOVAL TOOL



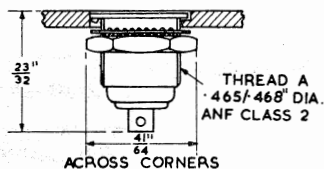
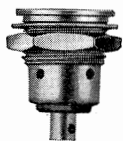
## Midget lampholder bases

Developed for T-1½ (S6s/8) Midget flange cap lamps, the lampholder bases illustrated may be used with a number of lampholders and caps shown on the following pages. Small locating keys prevent rotation of the bases when

mounted in the panel.

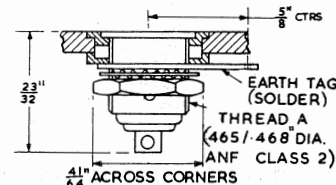
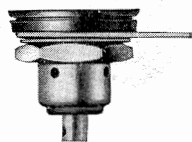
In the interests of economy, one lampholder is now being manufactured in each style. These bases provide maximum thread length for panel mounting.

### Solder terminal base, earthed



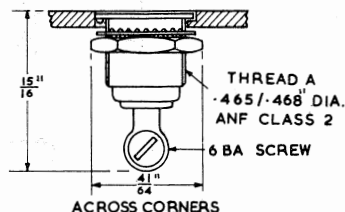
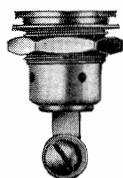
Base Part no.	Thread A length	Panel thickness B min.	max.
02-0081	.437"	.064"	.320"

### Solder terminal base, insulated



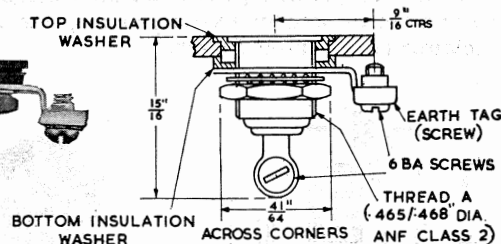
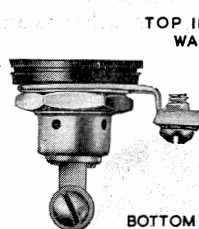
Base Part no.	Thread A length	Panel thickness B min.	max.
02-0082	.437"	.064"	.230"

### Screw terminal base, earthed

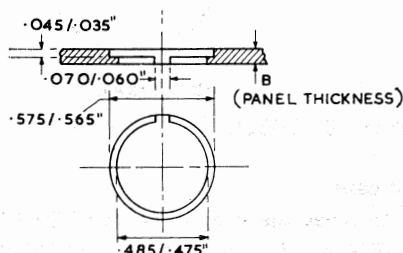


Base Part no.	Thread A length	Panel thickness B min.	max.
02-0083	.437"	.064"	.320"

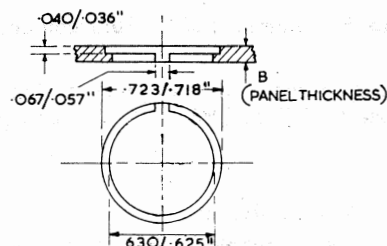
### Screw terminal base, insulated



Base Part no.	Thread A length	Panel thickness B min.	max.
02-0084	.437"	.064"	.230"



Installation of earthed types



Installation of insulated types

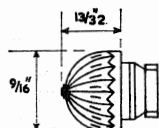
Earth tags and insulation washers are available as separate items:

Top insulation washer 02-1382  
Bottom insulation washer 02-1383



## Indicator caps

Brilliant illumination is provided by the faceted cap and allows the indicator to be seen from any angle. These indicators have metal shanks and they cannot be used for trans-illumination of legends in 'Plasteck' panels.



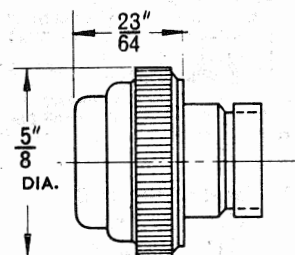
Short cap. Part number: 80/10/1048/colour.

Cap colours available: red, green, blue, amber or clear.

Lamps: use T-1 1/4 (S6s/8) Midget flange types up to 2 W.

## Flat top indicator caps

A translucent plastic cap set in a black metal bezel allows this unit to be used for a variety of purposes either as an indicator or on a Press Switch.



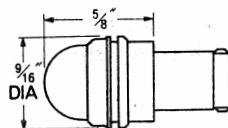
Short cap. Part number: 80/10/1052/colour.

Cap colours: translucent red, green, amber.

Lamps: use T-1 1/4 (S6s/8) Midget flange cap types up to 1 W.

## Dimmer lampholder caps

These Dimmer lampholders have been designed with a rotatable glass cap to control light output. Built-in stops allow adjustments between full brightness (D) and a pinpoint of light (N). The long cap is for use with 'Plasteck' panels.



Long cap. Part number: 02-0403/colour.

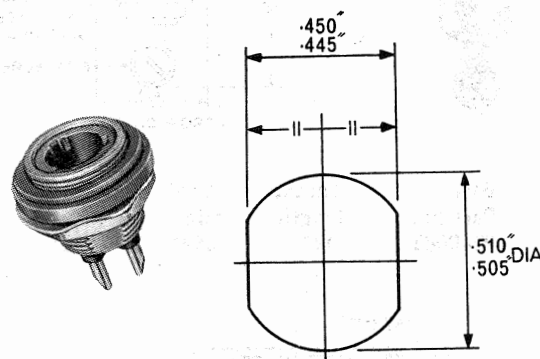
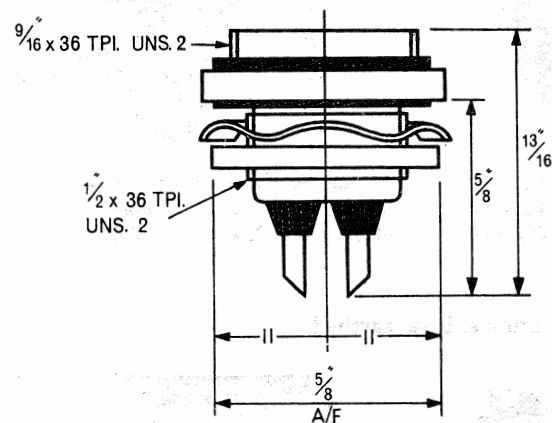
Cap colours available: green.

Lamps: use T-1 1/4 (S6s/8) Midget flange cap types up to 2 W.

## Sealed lampholder base

Designed to meet the requirements of DEF.5201 Style LH.23, the sealed lampholder base is for use with lampholder caps shown below. The twin tubular terminations are insulated by seals of high temperature rubber and are designed for a soldered connection.

Moisture-proof seals are formed by seating washers at both the panel face and lampholder cap.

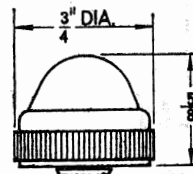


PANEL HOLE

Part number: 80/10/1351.

## Indicator caps

Designed to meet the requirements of DEF.5201, these indicator caps are for use with the sealed lampholder bases shown above. The indicator caps have glass lenses, internally frosted, with a dull nickel plated bezel, knurled for maximum finger grip.



Part number: 80/10/1560/colour.

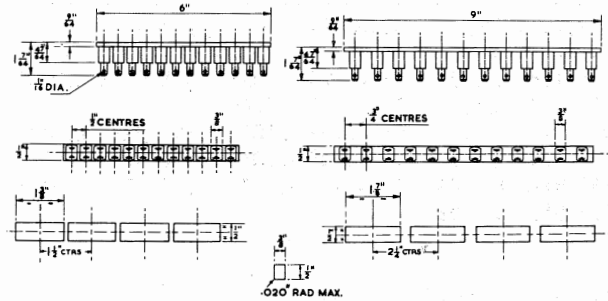
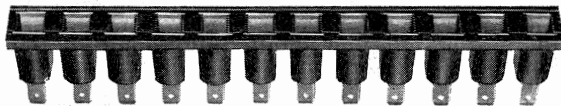
Cap colours: red, green, blue, yellow, orange and clear.

Lamps: use T-1 1/4 (S6s/8) Midget flange cap types up to 2 W.



## Multi-socket indicator strip

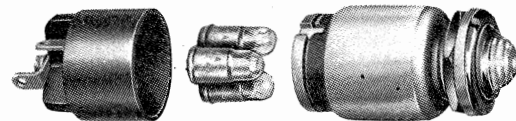
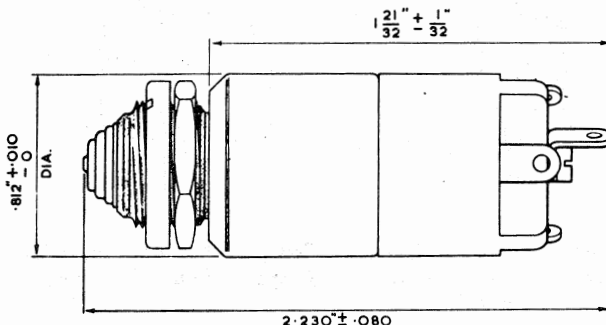
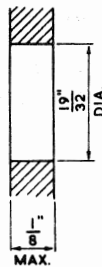
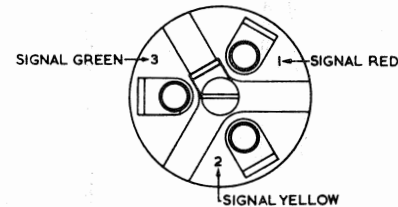
Multi-socket Indicators are produced in strips of twelve sockets on either  $\frac{1}{2}$  in or  $\frac{3}{4}$  in centres. They can be cut by the user to give shorter lengths as desired, or used end-to-end to obtain longer strips. They are easily mounted, using 3 Simmonds Spire Nuts as a minimum per strip. Single sockets are also available and can be used separately, or in conjunction with the above indicator strips. Installation is by a panel mounting hole measuring  $\frac{1}{2} \times \frac{3}{8}$  in in size. T-2 Slide Base Lamps are used with small plastic caps in several bright colours—details are given below—order separately.



Part numbers: Multi-socket strip ( $\frac{1}{2}$  ctrs): 80/10/2062/S  
Multi-socket strip ( $\frac{3}{4}$  ctrs): 80/10/2063/S  
Single socket: 80/10/2064/S  
Simmonds spire nuts 80/10/2067/

## Three colour indicator

The Three Colour Indicator is suitable for a wide variety of signalling applications where space saving is an important factor. Three internal coloured filters, optically positioned, project the selected colour through the front glass lens which has a ribbed surface for maximum indication. The internal filters are glass to specification BS 1376: Signal Red class "A" Signal Green class "A" and Signal Yellow class "B2".



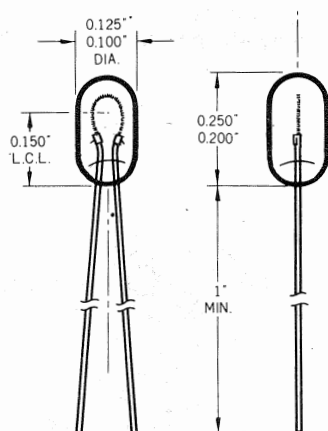
Part numbers: Solder terminals: 02-0010/C  
Screw terminals: 02-0011/C  
Lamps: use T-1 1/4 (S6s/8) Midget flange cap types up to 2W.  
The indicators are supplied without lamps. These should be ordered separately to suit individual requirements.

**Nato Stock Numbers – Miniature lamps**

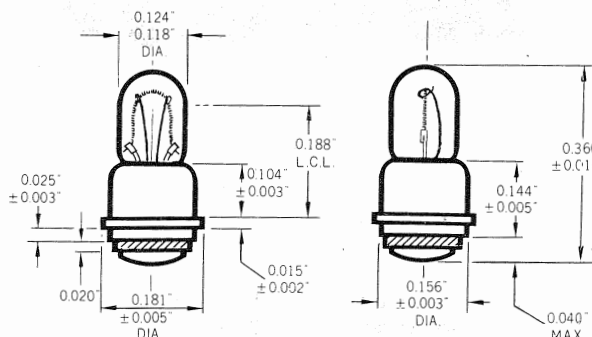
6240-99- TBL	6240-99- TBL	6240-99 TBL
995-1189 L.1122	995-9120 L.1003	995-9178 L.1018
995-1198 L.1123	995-9122 L.1006	
995-1230 L.1094	995-9125 L.1001	995-9215 L.1093
995-1286 L.1112	995-9135 L.1014	996-9213 L.1045
995-9118 L.1004	995-9174 L.1020	996-9215 L.1016
995-9119 L.1002		

**T-1 Wire terminal lamps**

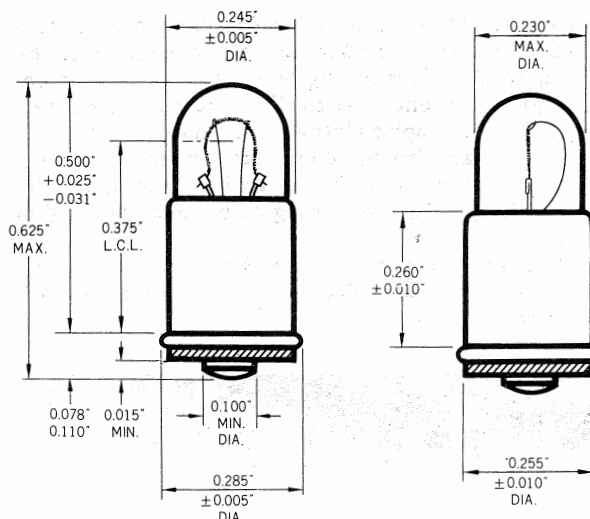
Intended for mounting directly to a circuit by soldering or welding, or for potted application where appropriate lamps can be supplied to the requirements of BS.2G.181.



Part No.	U.S. Trade Ref.	Design Volts	Design Amps	Nominal M.S.C.P.	Nominal Lumens
L.1122	683	5	.06	.053	.66

**T-1 (S3s) Sub-midget flange cap lamps**

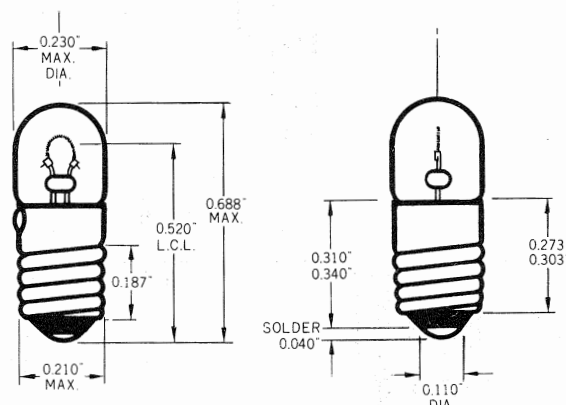
Part No.	U.S. Trade Ref.	Design Volts	Design Amps	Nominal M.S.C.P.	Nominal Lumens
L.1123	685	5	.06	.053	.66

**T-1 3/4 (S6s/8) Midget flange cap lamps**

Part No.	U.S. Trade Ref.	Design Volts	Design Amps	Nominal M.S.C.P.	Nominal Lumens
L.1001	—	4	.26	.338	4.25
L.1002	—	6	.10	.19	2.4
L.1014	328	6	.20	.62	7.8
L.1069	—	12	.04	.08	1.0
L.1003	—	12	.10	.48	6.0
L.1068	330	14	.08	.60	7.5
L.1338	387	28	.04	.30	3.77
L.1004	327	28	.04	.34	4.27
L.1006	—	28	.08	.80	10

**T-1 3/4 (E5/8) L.E.S. cap lamps**

Small indicator lamps with L.E.S. caps ideally suitable for a wide variety of applications in general industry.



Part No.	U.S. Trade Ref.	Design Volts	Design Amps	Nominal M.S.C.P.	Nominal Lumens
L.1064	335	28	.04	.34	4.27

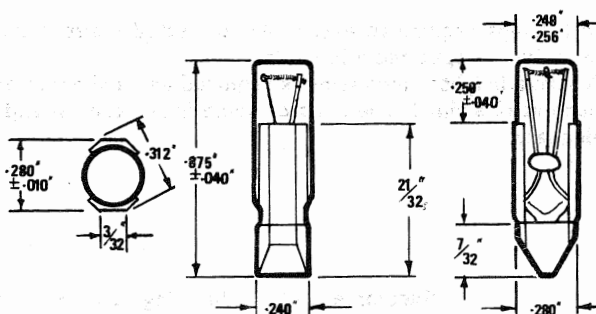


## T-2 Slide base lamps

The slide base increases the holding surface area, resulting in a positive electrical contact and ensuring optimum lamp performance even under shock and vibration conditions.

Two nickel plated contacts are cemented to the sides of the glass bulb and embedded in a moulded nylon base. Working temperature of the base material is  $-55$  to  $+190^{\circ}\text{C}$ .

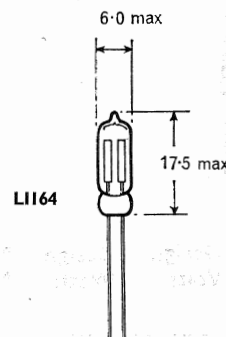
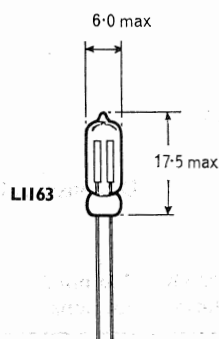
Part No.	U.S. Trade Ref.	Design Volts	Design Amps	Nominal M.S.C.P.	Nominal Lumens
L1019	6ESB	6	.04	.04	.50
L1020	12ESB	12	.04	.127	1.6
L1157	18ESB	18	.04	.11	1.38
L1018	28ESB	28	.04	.19	2.4



**T-2 Neon lamps, wire terminal**

Ideal for use as indicators in a wide range of electrical appliances and switches, these lamps are designed to be interchangeable with similar types of British and American origin.

By virtue of their long life without sudden failure, they may be permanently wired in position. Suitable for operation on all mains voltages, their main features are reliability, negligible current consumption and the absence of heat. All types require an externally connected series resistor and values recommended are consistent with good light output and long life. The resistor value is not critical and a 20% tolerance is quite adequate.



(Dimensions in mm)

Operating voltage	Low brightness types				High brightness types			
	L1163				L1164			
	a.c. 100-120V	a.c. 220-250V	d.c. 100-120V	d.c. 220-250V	a.c. 100-120V	a.c. 220-250V	d.c. 100-120V	d.c. 220-250V
Nominal current (mA)	0.7	0.65	0.7	0.65	1.8	1.6	1.95±	1.6
Striking voltage (min.)	47-55	48-56	68-83	75-87	67-95	67-95	90-130	95-140
Maintaining voltage*	42-55	42-55	50-62	50-62	67-95	67-95	67-95±	67-95
Extinguishing voltage	44-54	44-54	57-68	63-79	66-94	66-94	74-99	82-115
Recommended series resistor 82 (kilohms)		270	82	270	20	100	20	100
Maximum power dissipated in resistor† (watts)	0.07	0.18	0.07	0.20	0.15	0.36	0.15	0.40

\* Indicates the actual voltage across the lamp required to maintain nominal current through the lamp.

† This occurs when a lamp giving maximum current is used with a resistor, the value of which is 20% below that recommended.

‡ The figures quoted are for the lamps that strike below 100V, therefore careful selection of lamps for use on low voltages d.c. is necessary.





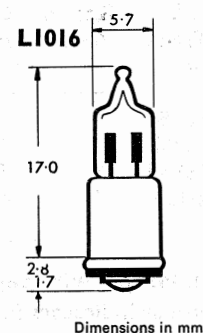
## T-2 (S6s/8) Neon lamps, midjet flange cap

Designed for use as miniature indicator lamps for a wide variety of electrical appliances and switchgear.

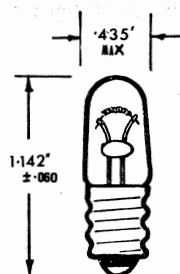
Both lamps require an externally connected resistor and the values recommended below are those consistent with good light output and a long life.

Where a brighter indication is required and a shorter lamp life is sufficient, the resistor value may be reduced by as much as one third. The resistor value is not critical and up to 300V,  $\frac{1}{4}$  W resistors with a 20% tolerance are quite adequate.

Part no.	Recommended Series Resistor		Striking voltage		Maintaining voltage		Current range nominal
	a.c./d.c.		Nom.	Max.	Nom.	Max.	
	100-120V	200-250V					
L.1016	150k	470k	80	86	60	66	0.3 - 0.4 mA

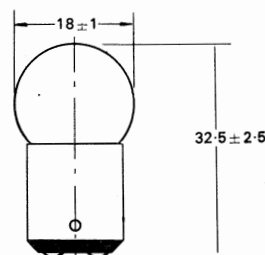


## T-3 $\frac{1}{4}$ (E10) M.E.S. cap lamps



Dimensions in inches

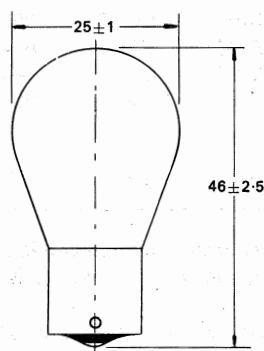
### 18 mm S.B.C.



Part No.	U.S. Trade Ref.	Design Volts	Design Watts	Nominal M.S.C.P.	Nominal Lumens
L.1112	—	28	2.5	.84	11.0

Part No.	Design Volts	Design Watts	Nominal Lumens	Lamp	Cap
L.1023	28	7	45	B15d	SBC

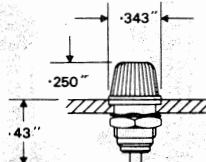
### 25 mm S.C.C. (shape P)



Part No.	Design Volts	Design Watts	Nominal Lumens	Lamp	Cap
L.1026	28	19	225	BA15s	SCC



## Sub-MINIATURE INDICATOR LIGHT



### PART NUMBERS

Base (earthed): 02-1387

Cap: 02-1388/colour

Insulating kit: 02-1450

Max panel thickness  
10 SWG

### LAMPS

Use T-1 (S3s) Sub-Midget Flange cap  
up to 1W—order separately

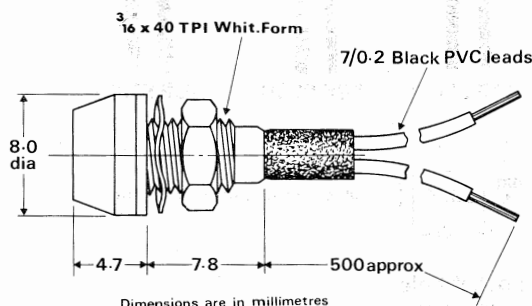
Designed to take full advantage of the extremely small T-1 lamp, this new indicator is suitable for countless applications in airborne electronic equipment, miniature lighting and all forms of signalling equipment.

The indicator light has a detachable lens and replaceable lamp. It has a metal body with an integral flange and a flat on one side to prevent rotation when mounted in a panel.

An insulating kit is available, comprising two insulating washers and an earth tag to convert the earthed base into an insulated type. The cap (or lens) is fluted for maximum brilliance and all-round visibility. Cap colours are: Red, Green, Yellow and Clear.

Colour	Nomenclature
Red	Signal Red BS 1376 class A
Green	Signal Green BS 1376 class A
Yellow	To DEF 5201 requirements
Clear	Colourless

## Sub-MINIATURE INDICATOR LIGHT



Robust and durable yet compact, this new indicator light is an obvious choice for use in computers, signalling equipment and similar spheres where low current consumption, long life without servicing and minimal space requirements are pre-eminent features.

It is a self-contained indicator with a brass, nickel plated body which houses a permanently encapsulated lamp and a non-detachable lens. The lamp is a 5 volt 60 mA T-1 wire ended type, crimped into position with a neoprene sleeve. The average lamp life of approximately 100,000 hours is based on accelerated laboratory life tests at over-voltage. Other lamps can be supplied to special order. Wire leads are 7/0.2mm PVC sheathed approx 50 cm long. Ambient temperature range is —55 to +70 C. Lens colours are Red, Green, Blue, Yellow and Clear.



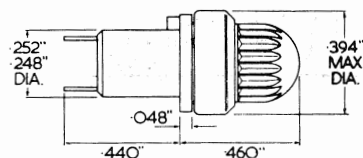
### PART NUMBERS

02-1623/1/colour

### LAMPS

Non-replaceable T-1 wire ended.

## Sub-MINIATURE INDICATOR LIGHT



### LAMP

Use T-1 (S3s) Sub-Midget Flange cap  
up to 1W—order separately

A small, neat indicator light that was designed to provide industry with an inexpensive yet highly reliable component.

It has a detachable lens and replaceable lamp. The moulded plastic body has an integral flange with a small key for locating in the panel to prevent the indicator rotating. It is secured to the panel by a press-on spire nut (9/16" diameter). The two terminals are insulated from the panel and are designed for solder connection.

The lens cap is plastic, fluted for optimum brilliance with all round visibility and has a neat aluminium bezel.

Cap colours are: Red, Green, Yellow and Clear.



### PART NUMBERS

Base: 80/10/2354/1

Cap: 02-1420/Colour

Spire Nut: 02-0036

## SEALED Sub-MINIATURE INDICATOR LIGHT



### PART NUMBERS

Base: 02-0495

Cap: 02-1464/Colour

### LAMPS

Use T-1 (S3s) Sub-Midget Flange cap  
up to 1W—order separately

A robust and sealed indicator light with a detachable lens cap and replaceable lamp that has been designed to meet the requirements of DEF.5201.

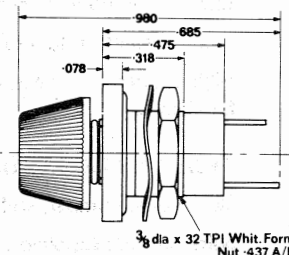
The moulded body has an integral flange, an undercut with sealing ring and two flats to prevent rotation in the panel. When mounted correctly, a seal is formed at the panel face, capable of withstanding a pressure differential of one atmosphere.

The lens cap is plastic, fluted for optimum brilliance and all-round visibility.

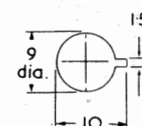
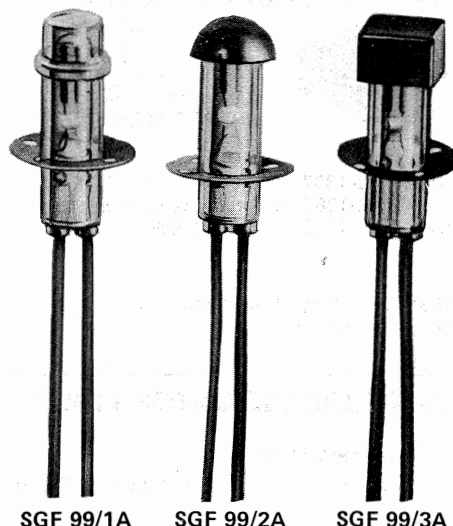
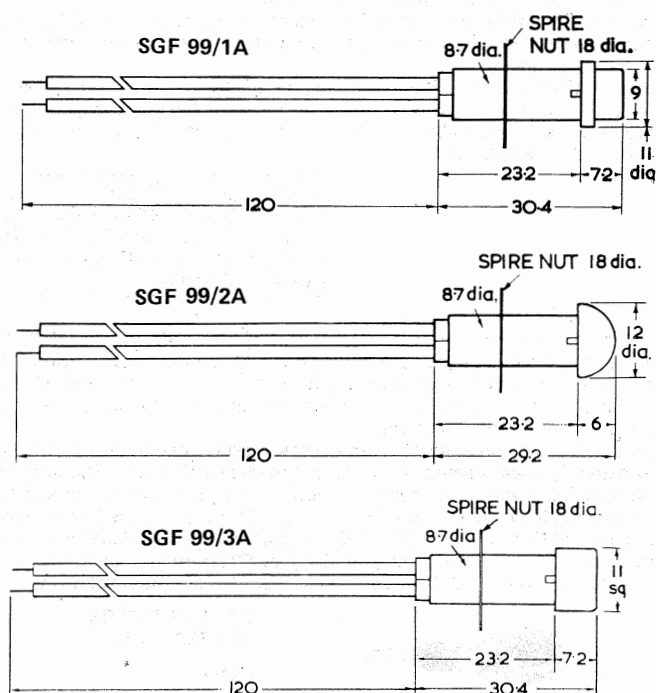
Cap colours are Red, Green, Blue, Orange, Yellow and Clear.

The two terminals are insulated from the panel and are designed for soldering or will accept AMP series 78 taper terminals.

Colour	Nomenclature
Red	Signal Red BS1376 Class A
Green	Signal Green BS1376 Class A
Blue	Signal Blue BS1376 Class A
Orange	Signal Yellow BS1376 Class B2
Yellow	to DEF 5201 requirement
Clear	Colourless



## Signal lamps series SGF 99/1A, 99/2A, 99/3A



Socket hole dimensions.

all dimensions are in millimetres

### NEON

TYPE NUMBER	STYLES	VOLTAGE	RANGE	COLOURS
SGF 99	1A, 2A & 3A	110V	70 - 130V a.c.	<div> <div>Red, Amber,</div> <div>Opal, Clear,</div> <div>(Green in 220 &amp; 380 only)</div> </div>
SGF 99	1A, 2A & 3A	220V	185 - 280V a.c.	
SGF 99	1A, 2A & 3A	380V	300 - 400V a.c.	

Striking voltage: 110V type approx 65V

220 & 380V type approx 187V

Life: 5,000 to 50,000 hours, according to length of operational periods.

### INCANDESCENT

TYPE NUMBER	STYLES	RATINGS	COLOURS
SGF 99	1A, 2A & 3A	6V 0.04A	<div> <div>Red, Green,</div> <div>Clear, Amber,</div> <div>Opal or Blue</div> </div>
SGF 99	1A, 2A & 3A	12V 0.05A	
SGF 99	1A, 2A & 3A	24V 0.02A	
SGF 99	1A, 2A & 3A	36V 0.02A	
SGF 99	1A, 2A & 3A	48V 0.02A	
SGF 99	1A, 2A & 3A	60V 0.02A	

Life: 1,000 hours minimum.

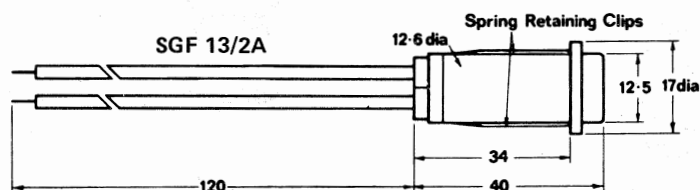
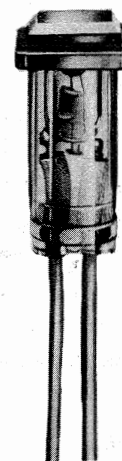
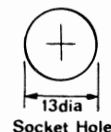
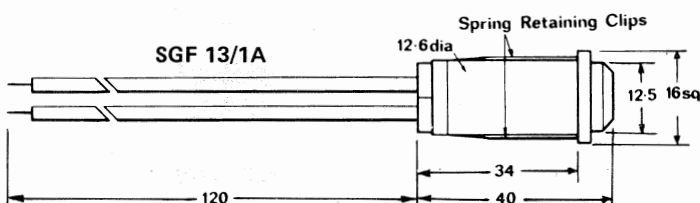
Heat resistant up to 125°C, cables and resistor up to 95°C.

High temperature leads, clip-in bodies and other cap styles are available — consult R.E.L. Components Division for details.

### ORDERING PROCEDURE

Quote type number, style, voltage and colour required, e.g. SGF99/1A/24/Amber

Spire nuts are supplied with all items ordered.


**Signal lamps series SGF 13/1A, 13/2A**

**SGF 13/1A**

**SGF 13/2A**


all dimensions are in millimetres

**NEON**

PART NUMBER	STYLES	VOLTAGE	RANGE	COLOURS
SGF 13	1A & 2A	110V	70 - 130V a.c.	Red, Amber, Opal, Clear, (Green in 220 & 380 only)
SGF 13	1A & 2A	220V	185 - 280V a.c.	
SGF 13	1A & 2A	380V	300 - 400V a.c.	

Striking voltage: 110V type approx 65V  
220 & 380V type approx 187V

Life: 5,000 to 50,000 hours, according to length of operational periods.

**INCANDESCENT**

TYPE NUMBER	STYLES	RATINGS	COLOURS
SGF 13	1A & 2A	6V 0.15A	Red, Green, Clear, Amber, Opal or Blue
SGF 13	1A & 2A	12V 0.10A	
SGF 13	1A & 2A	24V 0.05A	
SGF 13	1A & 2A	36V 0.02A	
SGF 13	1A & 2A	48V 0.02A	
SGF 13	1A & 2A	60V 0.02A	

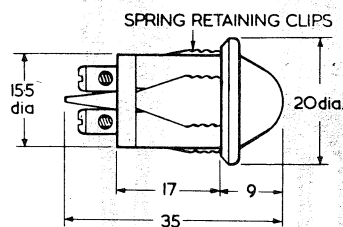
Life: 1,000 hours minimum.

Heat resistant up to 125°C, cables and resistor up to 95°C.

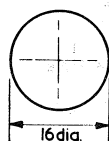
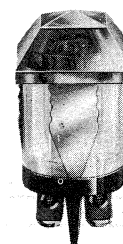
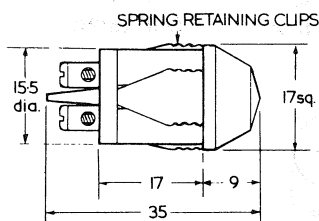
High temperature leads, clip-in bodies and other cap styles are available — consult R.E.L. Components Division for details.

**ORDERING PROCEDURE**

Quote type number, style, voltage and colour required, e.g. SGF 13/1A/380/Opal.

**Signal lamps series SGF 20/1S, 20/2S****SGF 20/1S**

all dimensions are in millimetres

Socket hole  
dimensions.**SGF 20/1S****SGF 20/2S****SGF 20/2S****NEON**

TYPE NUMBER	STYLES	VOLTAGE	RANGE	COLOURS
SGF 20	1S & 2S	110V	70 - 130V a.c.	Red, Amber, Opal, Clear, (Green in 220 & 380 only)
SGF 20	1S & 2S	220V	185 - 280V a.c.	
SGF 20	1S & 2S	380V	300 - 400V a.c.	

Striking voltage: 110V type approx 65V  
220 & 380V type approx 187V

Life: 5,000 to 50,000 hours, according to length of operational periods

**INCANDESCENT**

TYPE NUMBER	STYLES	RATINGS	COLOURS
SGF 20	1S & 2S	6V 0.15A	Red, Green, Clear, Amber, Opal or Blue
SGF 20	1S & 2S	12V 0.10A	
SGF 20	1S & 2S	24V 0.05A	
SGF 20	1S & 2S	36V 0.02A	
SGF 20	1S & 2S	48V 0.02A	
SGF 20	1S & 2S	60V 0.02A	

Life: 1000 hours minimum.

Heat resistant up to 125°C, resistor incorporated within the lampholder.

Other cap styles, wire leads or blade terminals are also available — consult R.E.L. Components Division for details.

**ORDERING PROCEDURE**

Quote type number, style, voltage and colour required, e.g. SGF 20/1S/36/Blue