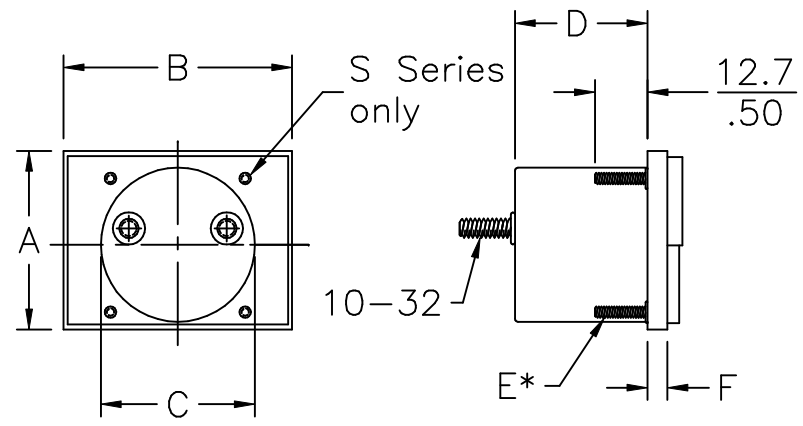
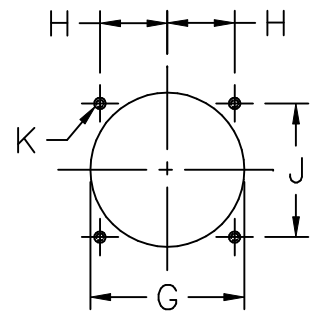


REVISIONS			
SYM.	DESCRIPTION	DATE	APPROVAL
A	RELEASED TO PRODUCTION STATUS	7-1-08	21094



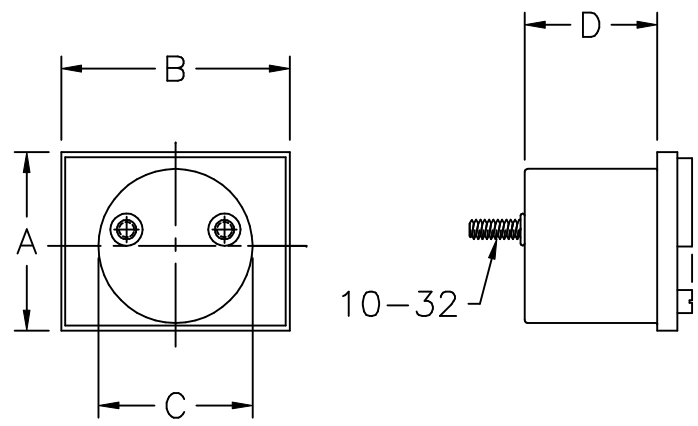
S Series



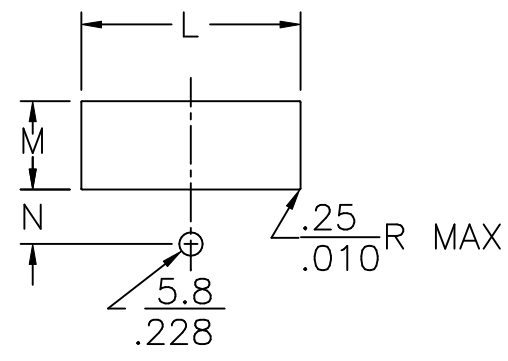
S Series panel cutout

DIMENSIONAL DATA S SERIES

	A	B	C	D	E*	F	G	H	J	K	
1S	mm.	44.5	56.9	38.36	33.0	M3*	3.5	39.4	16.7	33.3	3.2
	in.	1.75	2.24	1.51	1.30	4-40	.136	1.55	.656	1.31	.125
2S	mm.	58.2	76.58	54.1	33.0	M3*	4.06	56.4	23.9	47.8	3.2
	in.	2.29	3.015	2.13	1.30	4-40	.160	2.22	.940	1.88	.125
3S	mm.	73.7	94.7	67.31	33.0	M3*	4.32	71.6	28.4	57.2	3.2
	in.	2.90	3.73	2.65	1.30	4-40	.170	2.82	1.125	2.25	.125
4S	mm.	100.6	129.5	67.31	33.0	M3.5*	5.33	71.6	50.8	90.4	3.8
	in.	3.96	5.10	2.65	1.30	6-32	.210	2.82	2.00	3.56	.150
5S	mm.	113.8	148.6	67.31	33.0	M3.5*	5.59	71.6	66.8	76.2	3.8
	in.	4.48	5.85	2.65	1.30	6-32	.220	2.82	2.63	3.00	.150
5S Opt.1	mm.	113.8	148.6	67.31	33.0	M3.5*	5.59	71.6	57.2	88.9	3.8
	in.	4.48	5.85	2.65	1.30	6.32	.220	2.82	2.25	3.50	.150



W Series



W Series panel cutout

$\frac{+.25}{-.00}$
 $\frac{+.010}{-.000}$

DIMENSIONAL DATA W SERIES

	A	B	C	D	L	M	N	
1W	mm.	45.0	57.4	38.36	33.0	54.6	23.7	13.3
	in.	1.77	2.26	1.51	1.30	2.150	.935	.525
2W	mm.	58.2	76.5	54.1	33.0	73.7	32.3	16.1
	in.	2.29	3.01	2.13	1.30	2.900	1.270	.633
3W	mm.	73.7	94.7	59.7	33.0	91.7	40.5	20.5
	in.	2.90	3.73	2.65	1.30	3.610	1.595	.804
4W	mm.	103.1	131.6	67.3	33.0	127.5	59.6	21.7
	in.	4.06	5.18	2.65	1.30	5.020	2.345	.856
5W	mm.	116.8	151.6	67.3	33.0	146.8	65.9	32.5
	in.	4.60	5.97	2.65	1.30	5.780	2.595	1.280

TOLERANCE UNLESS SPECIFIED	DRAWN BY	W.C.	6-30-08
RAW MATERIAL - COMMERCIAL STANDARD	CHECKED BY	D.P.	7-24-08
	ENGINEER	R.J.D.	7-24-08
	USED ON		NEXT ASSY
DIMENSIONS ARE IN INCHES.			
MATERIAL			
FINISH			
	THIS DRAWING COVERS A PROPRIETARY ITEM AND IS THE PROPERTY OF JEWELL INSTRUMENTS, LLC. THIS DRAWING IS NOT TO BE COPIED OR USED WITHOUT PERMISSION.		

S & W SERIES
1 1/2", 2 1/2", 3 1/2", 4 1/2", 5 1/2"
OUTLINE
SCALE NONE
EPA NO. 11229

Jewell
INSTRUMENTS, LLC.
MANCHESTER NEW HAMPSHIRE
DWG. NO. **S & W SERIES**
CAT. NO.
CODE 33005