

# Open Frame DC Operation B-41 Series Box Frame

Part Number: B41 - XXX - B-1

Select from performance chart below

## Specifications

Continuous Duty Cycle	At 20°C ambient temperature
Intermittent Duty Cycle	See below
Holding Force	26.3 lbs (117 N) at 20°C
Coil Insulation	Class "A": 105°C max. temperature standard. Other temperature classes are available
Coil Termination	Solder lugs
Plunger Weight	5.6 oz. (158.8 g)
Total Weight	31.0 oz. (878.9 g)
Dimensions	See page G38

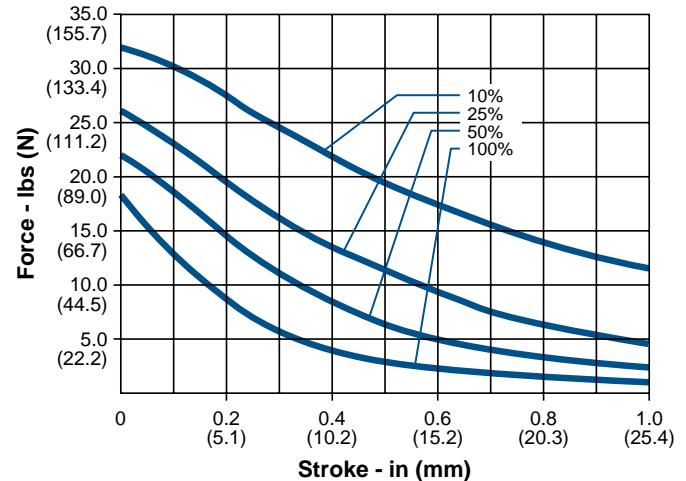
## Performance

Maximum Duty Cycle	100%	50%	25%	10%		
Maximum ON Time (sec) when pulsed continuously	∞	95	60	14		
Maximum ON Time (sec) for single pulse	∞	1548	491	139		
Watts (@ 20°C)	19	38	76	190		
Ampere Turns (@ 20°C)	1981	2807	3963	6274		
Coil Data						
Part Number	Resistance (@20°C)	Ref # Turns	VDC (Nom)	VDC (Nom)	VDC (Nom)	VDC (Nom)
B41-255-B-1	1.84	608	6	8.5	12	19
B41-254-B-1	7.67	1432	12	17	24	38
B41-253-B-1	30.19	2814	24	34	48	76
B41-252-B-1	121.5	5610	48	68	96	152
B41-251-B-1	793.46	14259	120	173	240	388

### NOTES:

- All data is typical.
- Force testing is done with the solenoid in the horizontal position.
- All data reflects operation with no heatsink.
- Magnetic latching versions available. Pull versions standard; push versions available.
- Other coil terminations available.
- All specifications subject to change without notice.

## Typical Force @ 20°C



## How to Order

Select the part number from the table provided. (For example, to order a 25% duty cycle unit rated at 48 VDC, specify B41-255-B-1.

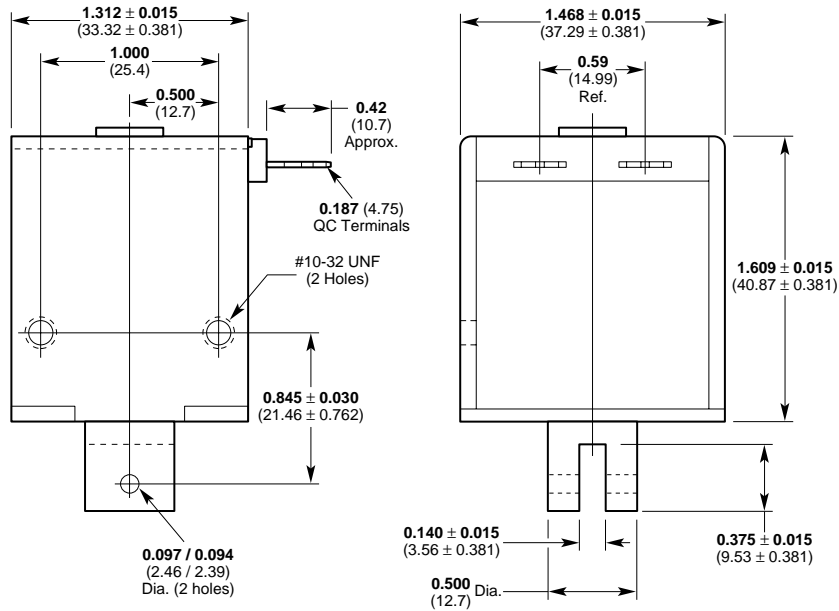
Please see [www.ledex.com](http://www.ledex.com) (click on Stock Products tab) for our list of stock products available through our North American distributors.

# Open Frame Box Frame Solenoid Dimensions

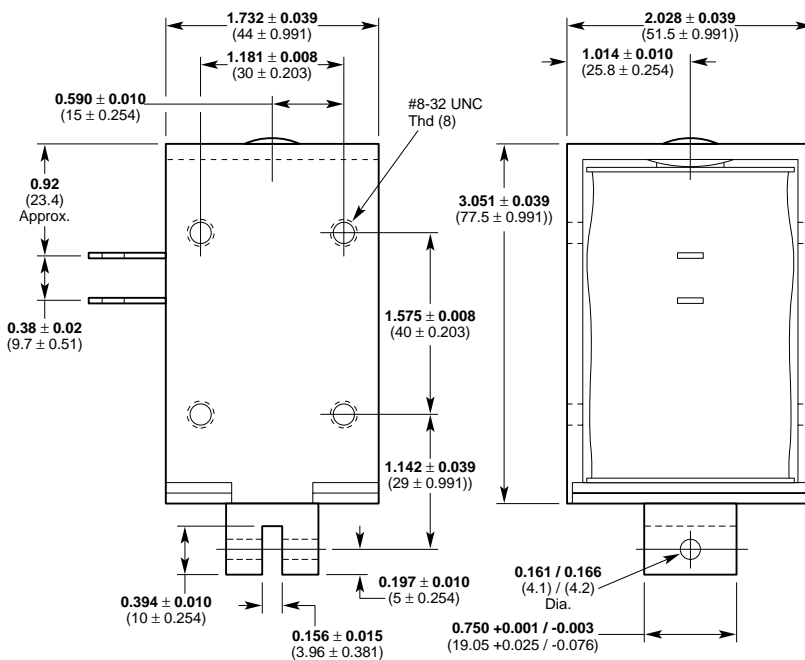
Inches (mm)

All solenoids are illustrated in energized state

B-22



B-41



All specifications subject to change without notice.