

# BULGIN

## Switches, Micro, Special



List No: S.725



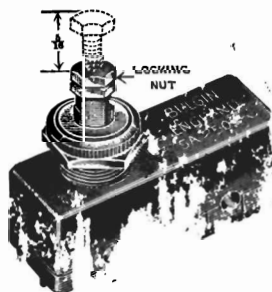
List No: S.778



List No: S.720



List Nos: S.610-612



### Face Mounting Micro-Switches

Face mounting Micro-Switches; fixing by  $2 \times 6$  BA. screws (not provided unless requested) to enter by  $\pm 0.1"$  (2.5 mm.) on the button face. The long insulated button is  $.156"$  (4 mm.) diameter; allow  $.171"$  (4.4 mm.) diameter hole through fixing surface. Button projects  $\frac{1}{4}"$  (6.3 mm.) from Micro-Switch face. Second model has slender cased plunger. Manufactured in the highest grade materials, so as to give a precise and long operating life. Users often obtain over 1,000,000 operations. Exceptionally useful for window and door alarm circuits, in many cases for burglar prevention.

### Micro-Switches for Direct-Drive

Strong, very popular Micro-Switches, with piston action plungers, on a standard type moulded casing; internal springs of the best hardened BERYLLIUM-COPPER-alloy and heavy contacts are of fine SILVER. Best operation obtained by axial movement, rather than sliding or rotating surfaces. Standard transverse fixing at  $1"$  centres.

Exceptionally long life. Tested, many at under 1,000,000 operations. Further, the design is similar to one adopted for inter-fer-